

Flight Procedures Cover Page	Task Action: FLIGHT CHECK	Task Type: IAP	Estimated Chart Date: 08/11/2022	APWS Task ID: CE226B245FEF42338092AF9A77E09E1D	APWS Project ID: A114459176DF4592B398F6B67698DA52
Procedure: RNAV (GPS) RWY 17 AMDT 3D		Enroute: NO	Specialist: Harris, Michael		Agreement Number:
Airport ID: KPHL		Airport City: PHILADELPHIA		State: PA	
Facility ID:	Facility Type:	Flight Inspection Remark Type: New FC Slot			
<p>Procedure Comments: CANCELS NOTAM FDC 1/9989.</p> <p>PROCESSED IAW TECHNICAL SUPPORT GROUP (AJF-17) MEMO DATED 07/07/2021, SUBJECT, GUIDANCE FOR PROCEDURAL CHANGES REQUIRING FLIGHT INSPECTION/VALIDATION.</p> <p>CONTACT ALLAN WILL, 405.954.6103.</p>					

QUALITY

38

CHECKED

QUALITY

8

CHECKED

[illegible]

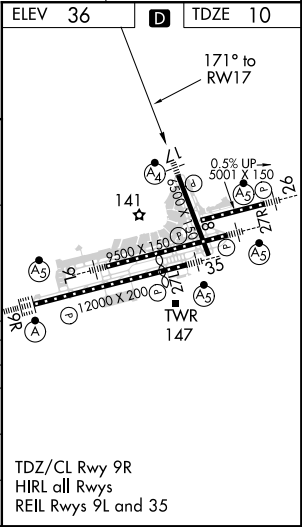
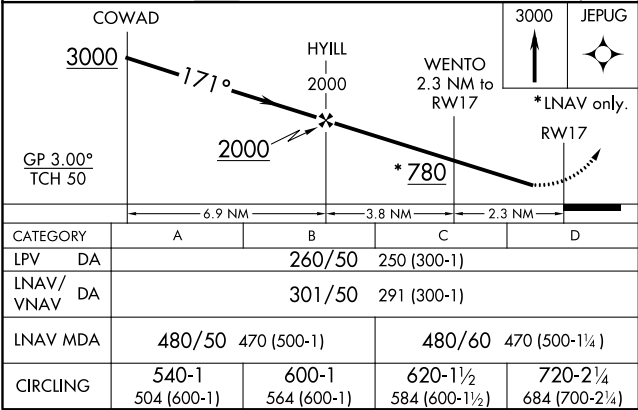
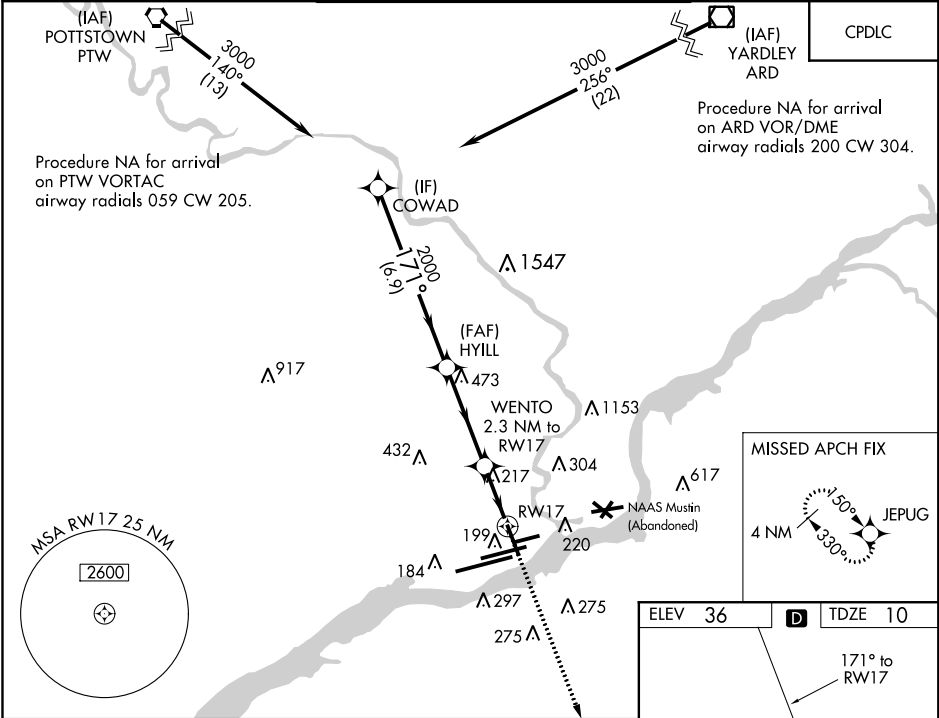
WAAS CH 86222 W17A	APP CRS 171°	Rwy Idg TDZE 10 Apt Elev 36
--	------------------------	---

OLD

RNAV (GPS) RWY 17
PHILADELPHIA INTL (PHL)

<p>⚠ Inop table does not apply to LPV and LNAV/VNAV all Cats and LNAV Cats A/B. For uncompensated Baro-VNAV systems, LNAV/VNAV NA below -12°C (11°F) or above 54°C (130°F). DME/DME RNP-0.3 NA. Rwy 17 helicopter visibility reduction below RVR 5000 NA.</p>	<p>MAISF A4</p>	<p>MISSED APPROACH: Climb to 3000 direct JEPUG and hold.</p>
--	---------------------	--

D-ATIS ARR 133.4 DEP 135.925	PHILADELPHIA APP CON 124.35 319.15	PHILADELPHIA TOWER 118.5 327.05 (Rwys 9L/27R, 8/26 and 17/35) 135.1 327.05 (Rwy 9R/27L)	GND CON 121.9 348.6	CLNC DEL 118.85 348.6
--	--	---	-------------------------------	---------------------------------



NE-4, 24 FEB 2022 to 24 MAR 2022

NE-4, 24 FEB 2022 to 24 MAR 2022

KPHL
PHILADELPHIA INTL
PHILADELPHIA PA
RNAV (GPS) RWY 17
100K

3

20000

6

40000

9

RNAV WENTO 7:1 Excluded Obs AAO (489)
FINAL AAO OLD

RNAV/NAV TANK (161)
42-128314

