

Flight Procedures Cover Page	Task Action: FLIGHT CHECK	Task Type: IAP	Estimated Chart Date: 12/26/2024	APWS Task ID: C1EC90A4088B4F3DAF62900A49BF86F2	APWS Project ID: 85463E38555E450292288BEC0052B34B
Procedure: ILS OR LOC RWY 31 AMDT 8		Enroute: NO	Specialist: Young, Silvia		Agreement Number:
Airport ID: KPIA			Airport City: PEORIA		State: IL
Facility ID: PIA	Facility Type: ILS	Flight Inspection Remark Type: New FC Slot			
<div>Procedure Comments:</div> <div>ACTIVE DATA USED FOR KPIA AIRPORT AND RWYS.</div> <div>CONTACT CASIMIR TABAKA 405.202.7857</div> <div><div>Digitally signed by <b>JOSEPH L ZEDER</b> Aug 28, 2024</div><div><div>QUALITY 9 CHECKED BEGUE</div><div>QUALITY 10 CHECKED</div></div></div>					

FIPC BASIC FORM									
PROCEDURE: ILS OR LOC RWY 31 AMDT 8				AIRPORT NAME: GENERAL DOWNING - PEORIA INTL		AIRPORT ID: KPIA		SPECIAL CONTROL NO: BP-09-015-24	
FAC ID: PIA			CITY: PEORIA			ST: IL		ORIG CHART DATE: 12/26/2024	
DFL TYPE: PROC/A	THIRD PARTY: <input type="checkbox"/> YES	EST. TIME ON SITE: 0.4	REIMB. NUMBER: AC0721		PTS TASK ID: C1EC90A4088B4F3DAF62900A49BF86F2				
PREFLIGHT NOTES									
REVIEWER:						DATE:			
COMMENTS:						CHECK ONE: <input type="checkbox"/> FLT CK REQ <input type="checkbox"/> NFCR <input type="checkbox"/> REJECT			
								YES	NO
						CPV COMPLETE?		X	
PROCEDURE RESULTS									
INSPECTION DATE: 10/10/2024		CREW #: VN329	N #: N77	INSTRUMENT PROCEDURE STATUS: <input checked="" type="checkbox"/> SAT <input type="checkbox"/> SAT W/CHANGES <input type="checkbox"/> UNSAT			ARINC CODING: <input checked="" type="checkbox"/> SAT <input type="checkbox"/> SAT/GOLD <input type="checkbox"/> UNSAT		
FLIGHT INSPECTOR SIGNATURE: glen b freeman @ 10/10/2024 16:32				PRINTED NAME: FREEMAN, GLEN BURSON				NOTAM INITIATED? <input type="checkbox"/> YES <input checked="" type="checkbox"/> NO	
FLIGHT INSPECTOR REMARKS: BP-09-015-24, GENERAL DOWNING - PEORIA INTL, PEORIA, IL, ILS OR LOC RWY 31, AMDT 8, completed SAT as proposed.									
IN-FLIGHT OBSTACLE REPORT									
OBSTRUCTION ID #:	COORDINATES OR LOCATION:		GNSS ALTITUDE (MSL):		BAROMETRIC ALTITUDE (MSL):		HEIGHT ABOVE GROUND LEVEL:		

LOC I-PIA <b>109.9</b>	APP CRS <b>309°</b>	Rwy Idg <b>10104</b> TDZE <b>650</b> Apt Elev <b>661</b>
---------------------------	------------------------	--

ILS or LOC RWY 31  
GENERAL DOWNING-PEORIA INTL (PIA)

DME required.

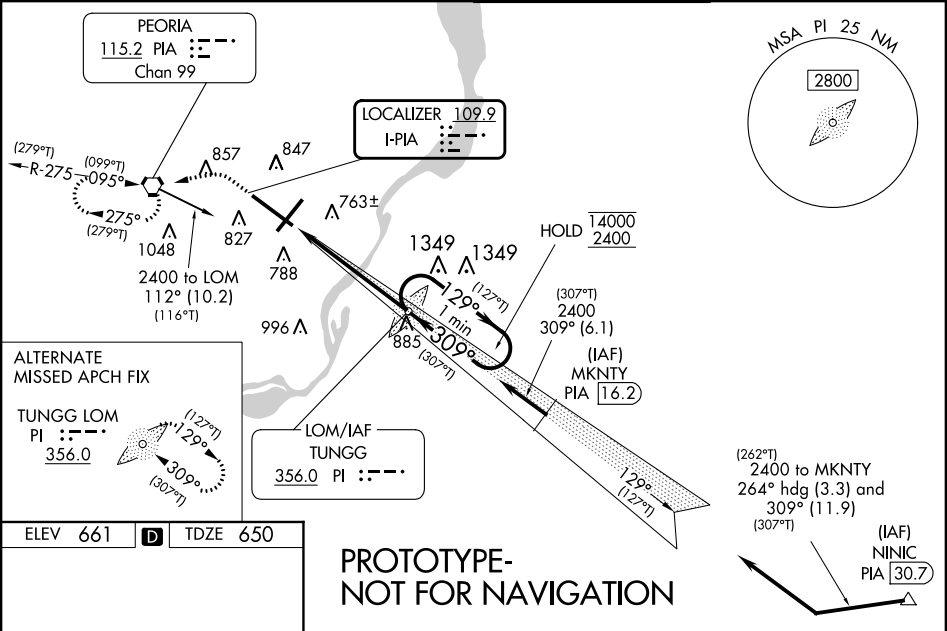
When local altimeter setting not received, use AAA altimeter setting: increase S-ILS 31 DA to 939 feet; increase all MDAs 100 feet and S-LOC 31 visibility CAT C/D/E to 1 ¼ SM and Circling visibility Cat C ¼ SM and Cat D ½ SM. Circling Rwy 13, 31 NA at night. For inop ALS, when using AAA altimeter setting, increase ILS-31 all Cats visibility to RVR 4500, S-LOC 31 visibility Cats C/D/E to 1 ½ SM. DME from PIA VORTAC. DME use requires simultaneous reception of I-PIA and PIA DME. For inoperative ALS, increase S-ILS 31 Cat E visibility to RVR 4000 and S-LOC 31 Cats C/D/E to 1 ¾ SM.

\* RVR 1800 authorized with the use of FD or AP or HUD to DA.

MALSRL

MISSED APPROACH: Climb to 1200 then climbing left turn to 2400 direct PIA VORTAC and hold, continue climb-in-hold to 2400.

ATIS <b>126.1 282.2</b>	SAINT LOUIS APP CON <b>125.8 269.2</b>	PEORIA TOWER <b>124.0 353.85</b>	GND CON <b>121.85 348.6</b>
----------------------------	---	-------------------------------------	--------------------------------



ELEV 661	TDZE 650
PROTOTYPE- NOT FOR NAVIGATION	
One Minute Holding Pattern	
TUNGG LOM	
1200 2400 PIA	
2350 1200 2400	
1200 2400	
GS 3.00° TCH 55	
5.2 NM	
CATEGORY	A B C D E
S-ILS 31 *	850/24 200 (200-½)
S-LOC 31	1120/24 470 (500-½) 1120/50 470 (500-1)
CIRCLING	1160-1 499 (500-1) 1180-1½ 1400-2¼ 1680-3 519 (600-1½) 739 (800-2¼) 1019 (1100-3)



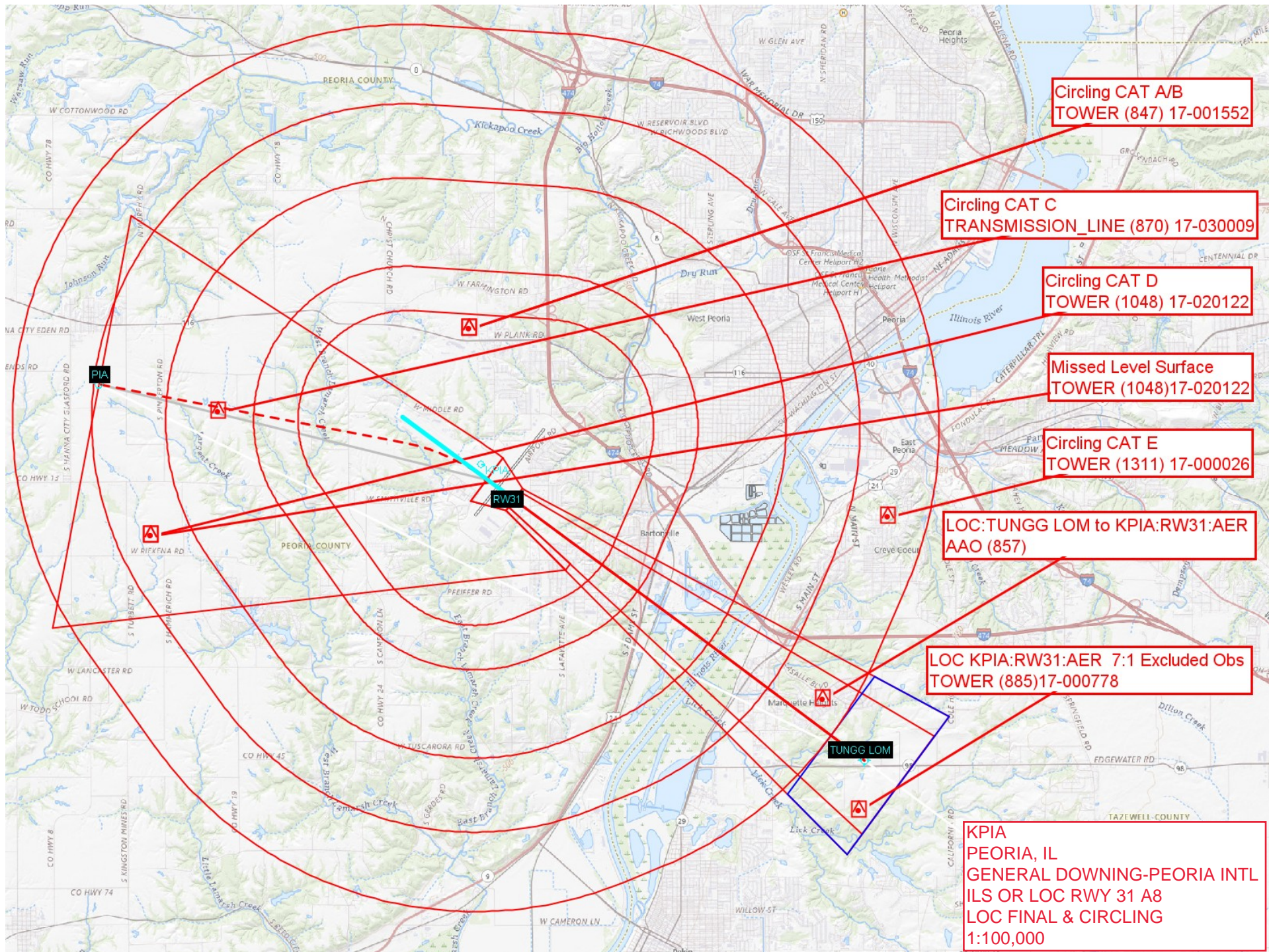


KPIA  
PEORIA, IL  
GENERAL DOWNING-PEORIA INTL  
ILS OR LOC RWY 31 A8  
ILS ASC  
1:100,000

Missed Level Surface  
TOWER (1048)17-020122

TUNG LOM







KPIA  
PEORIA, IL  
GENERAL DOWNING-PEORIA INTL  
ILS OR LOC RWY 31 A8  
FEEDER, HIL, DR IAF, IF, ILS, MA & Holding, CIH  
1:100,000

Missed Level Surface  
TOWER (1048) 17-020122

PIA:VORTAC to TUNGG LOM  
TOWER (1311) 17-000026

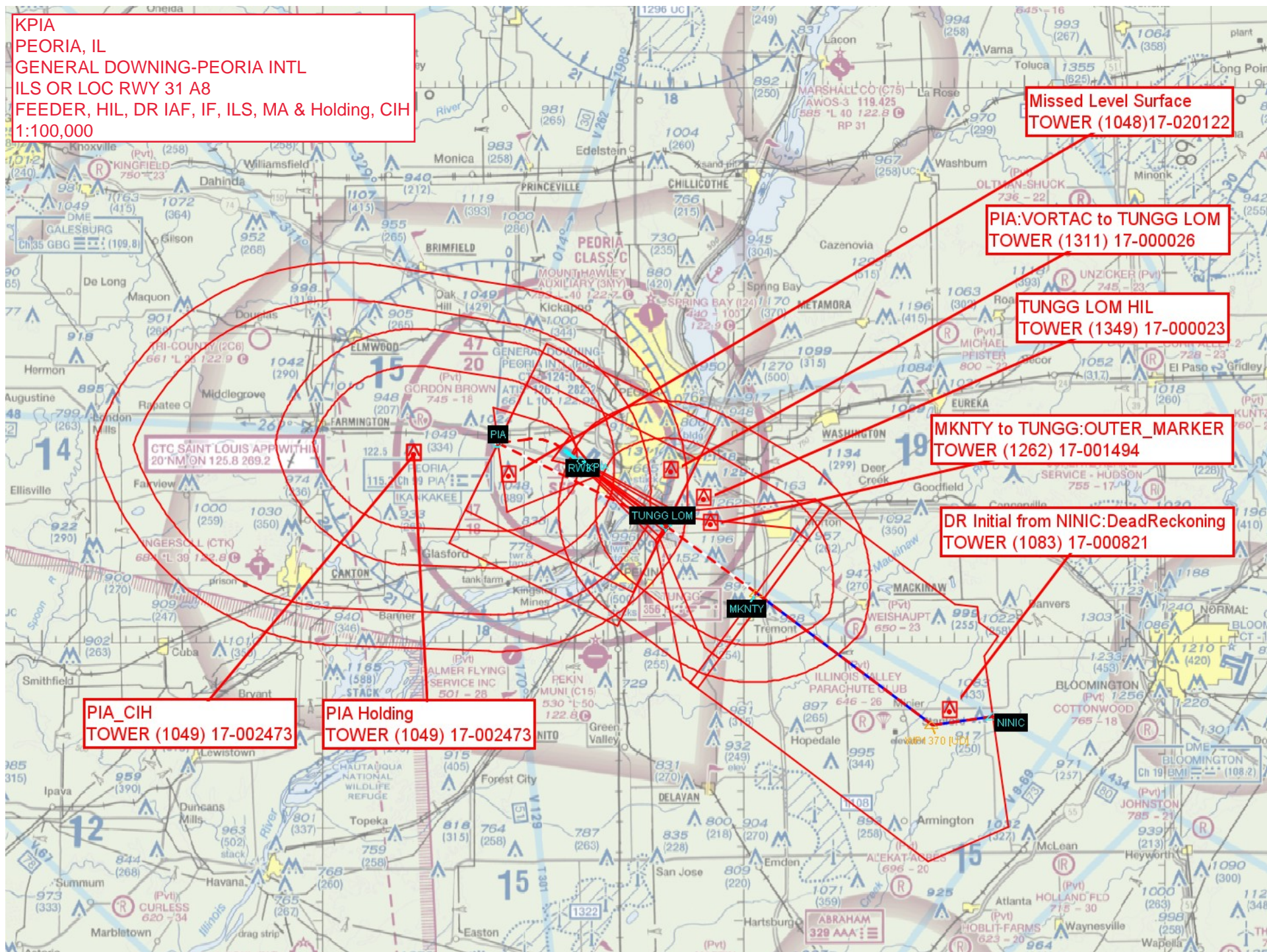
TUNGG LOM HIL  
TOWER (1349) 17-000023

MKNTY to TUNGG:OUTER\_MARKER  
TOWER (1262) 17-001494

DR Initial from NINIC:DeadReckoning  
TOWER (1083) 17-000821

PIA\_CIH  
TOWER (1049) 17-002473

PIA Holding  
TOWER (1049) 17-002473





KPIA  
PEORIA, IL  
GENERAL DOWNING-PEORIA INTL  
ILS OR LOC RWY 31 A8  
FEEDER, HIL, DR IAF, IF, ILS FINAL, ALT MA & Holding, CIH  
1:100,000

Alt Missed Level Surface  
TOWER (1311) 17-000026

TUNGG LOM CIH  
TOWER (1349) 17-000023

TUNGG Holding  
TOWER (1349) 17-000023

TUNGG LOM HIL  
TOWER (1349) 17-000023

PIA:VORTAC to TUNGG LOM  
TOWER (1311) 17-000026

MKNTY to TUNGG:OUTER\_MARKER  
TOWER (1262) 17-001494

DR Initial from NINIC:DeadReckoning  
TOWER (1083) 17-000821

