

Flight Procedures Cover Page	Task Action: Abbreviated Amendment	Task Type: IAP	Estimated Chart Date: 04/22/2021	APWS Task ID: C18D84BDDF1840ADAA69DDEE3308A7BD	APWS Project ID: C31C0FED787544249CCB550D68E7B696
Procedure: RNAV (GPS) RWY 32 AMDT 0C		Enroute: NO	Specialist: Thibodeaux, Charles		Agreement Number:
Airport ID: KLNL			Airport City: LAND O' LAKES		State: WI
Facility ID:	Facility Type:	Flight Inspection Remark Type:			

Procedure Comments:  
Clear T-NOTAM project  
PROCESSED IAW AIRCRAFT OPERATIONS GROUP (AJF-10) MEMO, APRIL 29, 2020, SUBJECT:  
FLIGHT INSPECTION REVIEW NOT REQUIRED  
CONTACT JASON KRETSCHMER 405.954.4019

QUALITY  
41  
CHECKED

QUALITY  
10  
CHECKED

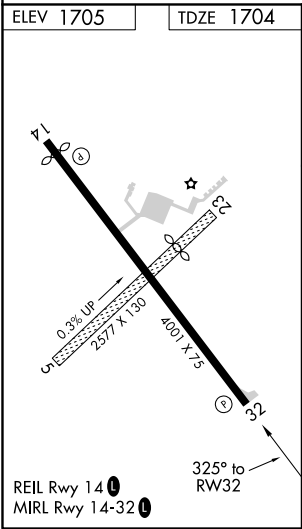
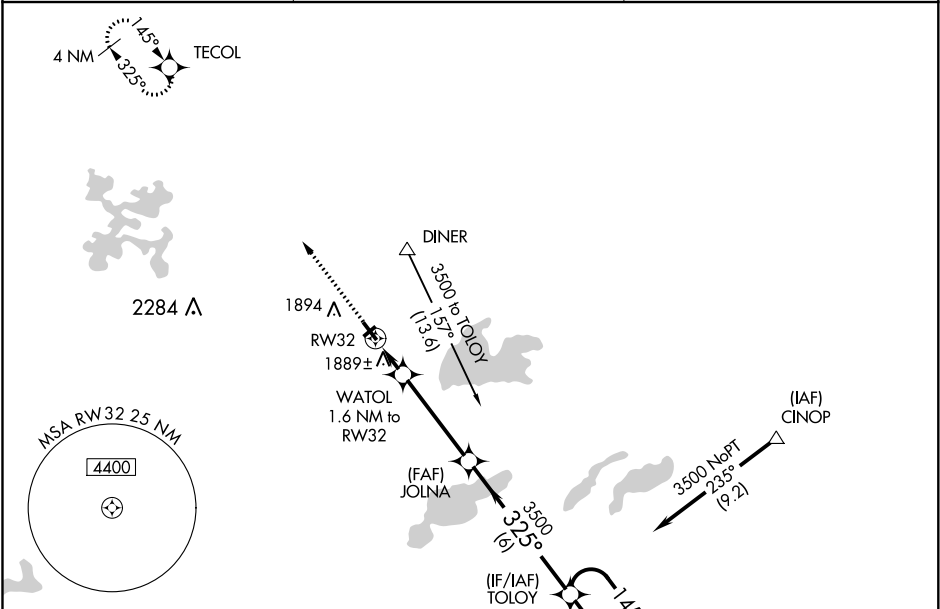
APP CRS	Rwy Idg	<b>4001</b>
<b>325°</b>	TDZE	<b>1704</b>
	Apt Elev	<b>1705</b>

RNAV (GPS) RWY 32

KINGS LAND O'LAKES (LNL)

<div>▼</div> <div>▲</div> <p>If local altimeter setting not received, use Eagle River Union altimeter setting and increase all MDAs 40 feet. DME/DME RNP-0.3 NA. Helicopter visibility reduction below 1 SM NA. Circling NA to Rwy 5 and 23. Straight-in Rwy 32 NA at night, Circling Rwy 32 NA at night.</p>	<p>MISSED APPROACH: Climb to 3500 direct TECOL and hold.</p>
---	--

<p>AWOS-3</p> <p><b>119.525</b></p>	<p>MINNEAPOLIS CENTER</p> <p><b>133.65 281.5</b></p>	<p>UNICOM</p> <p><b>122.8 (CTAF) 0</b></p>
-------------------------------------	--	--



ELEV 1705	TDZE 1704
<p>3500</p> <p>TECOL</p> <p>3500 NoPT 055° (14.9)</p> <p>(IAF) JAYME</p> <p>Procedure NA for arrival at JAYME via V63 southwestbound.</p>	<p>3500</p> <p>TECOL</p> <p>VGSI and descent angles not coincident (VGSI Angle 3.00/TCH 26).</p>
<p>WATOL 1.6 NM to RW32</p> <p>RW32</p> <p>2260</p> <p>3.00° TCH 40</p>	<p>JOLNA</p> <p>TOLOY</p> <p>4 NM Holding Pattern</p>
<p>1.6</p> <p>3.9 NM</p> <p>6 NM</p>	<p>325°</p> <p>145°</p> <p>3500</p>
<p>CATEGORY</p> <p>A</p> <p>B</p> <p>C</p> <p>D</p>	<p>LNNAV MDA</p> <p>2140-1</p> <p>436 (500-1)</p> <p>2140-1¼</p> <p>436 (500-1¼)</p> <p>2240-1½</p> <p>535 (600-1½)</p> <p>NA</p>
<p>CIRCLING</p> <p>2200-1</p> <p>495 (500-1)</p> <p>2240-1</p> <p>535 (600-1)</p> <p>2240-1½</p> <p>535 (600-1½)</p> <p>NA</p>	<p>NA</p>