

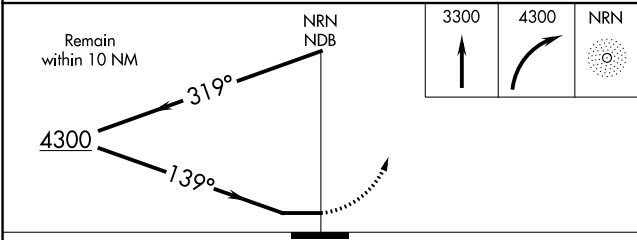
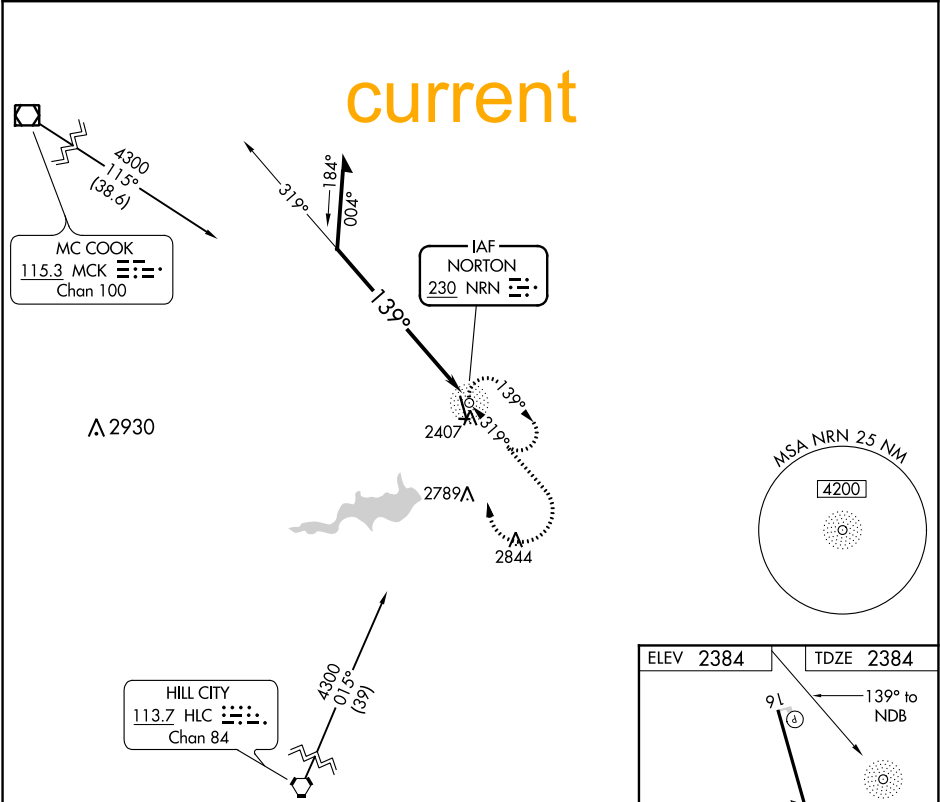
Flight Procedures Cover Page	Task Action: P-NOTAM	Task Type: IAP	Estimated Chart Date: 02/24/2022	APWS Task ID: C0D9D18787F845189134D9370289EBCE	APWS Project ID: 2286B06BE3FD44949C30D277C40C041D
Procedure: NDB RWY 16 AMDT 2B		Enroute: NO	Specialist: Sickels, Dale		Agreement Number:
Airport ID: KNRN			Airport City: NORTON		State: KS
Facility ID: NRN	Facility Type: NDB	Flight Inspection Remark Type:			
<div>Procedure Comments: Order 8260.3, Chapter 2, New Circling Criteria Applied. Contact Jason Kretschmer, AJV-A421, 405-954-4019</div> <div><div>Digitally signed by JASON KRETSCHMER Jan 12, 2022</div><div>QUALITY 47 CHECKED QUALITY 38 CHECKED</div></div>					

NDB NRN 230	APP CRS 139°	Rwy Idg TDZE Apt Elev 4701 2384 2384
-----------------------	------------------------	--

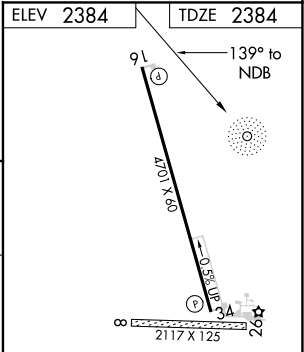
NDB RWY 16
NORTON MUNI (NRN)

NA When local altimeter setting not received, use Hill City Muni altimeter setting and increase all MDA 100 feet, increase S-16/ Circling Cat B visibility ½ mile, Cat C visibility 1 mile.	MISSED APPROACH: Climb to 3300 then climbing right turn to 4300 direct NRN NDB and hold, continue climb-in-hold to 4300.
---	--

AWOS-3PT 118.275	DENVER CENTER 132.7 226.675	CTAF 122.9
----------------------------	---------------------------------------	----------------------



CATEGORY	A	B	C	D
S-16	3080-1	696 (700-1)	3080-2 696 (700-2)	NA
CIRCLING	3080-1	696 (700-1)	3080-2 696 (700-2)	NA



NC-2, 15 JUL 2021 to 12 AUG 2021

NC-2, 15 JUL 2021 to 12 AUG 2021

Map from RNAV (GPS) Rwy 16, Amdt 1B showing New Circling Obstacles.

