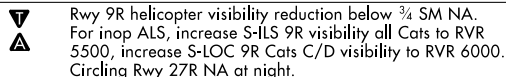


Flight Procedures Cover Page	Task Action: FLIGHT CHECK	Task Type: IAP	Estimated Chart Date: 04/17/2025	APWS Task ID: C0B3ACB62475470D990ECE86485CBD12	APWS Project ID: C7A6E627B6D746FAB674F37CE7DEDC1B
Procedure: ILS OR LOC RWY 9R AMDT 11		Enroute: NO	Specialist: Young, Silvia		Agreement Number:
Airport ID: KSBN			Airport City: SOUTH BEND		State: IN
Facility ID: UXW	Facility Type: ILS	Flight Inspection Remark Type: New FC Slot			
<div>Procedure Comments:</div> <div>ACTIVE DATA USED FOR KSBN AIRPORT, RWYS AND UXW ILS.</div> <div>UPDATE NOTAM FDC 4/7410 UPON PUBLICATION.</div> <div>CONTACT CASIMIR TABAKA 405.202.7857</div> <div><div>QUALITY 41 CHECKED</div><div>QUALITY 10 CHECKED</div></div>					

LOC I-UXW <u>109.3</u>	APP CRS 094°	Rwy Idg 8412 TDZE 790 Apt Elev 798
----------------------------------	------------------------	---

ILS or LOC RWY 9R
SOUTH BEND INTL (SBN)

ADF required.

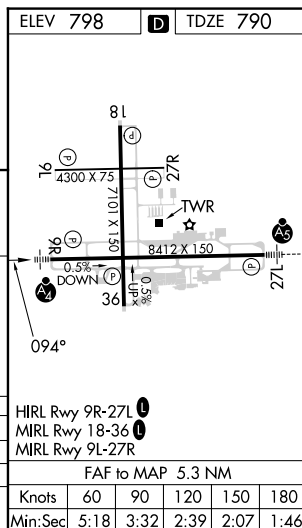
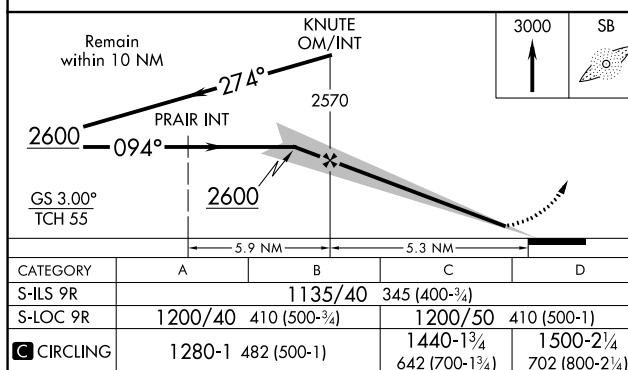
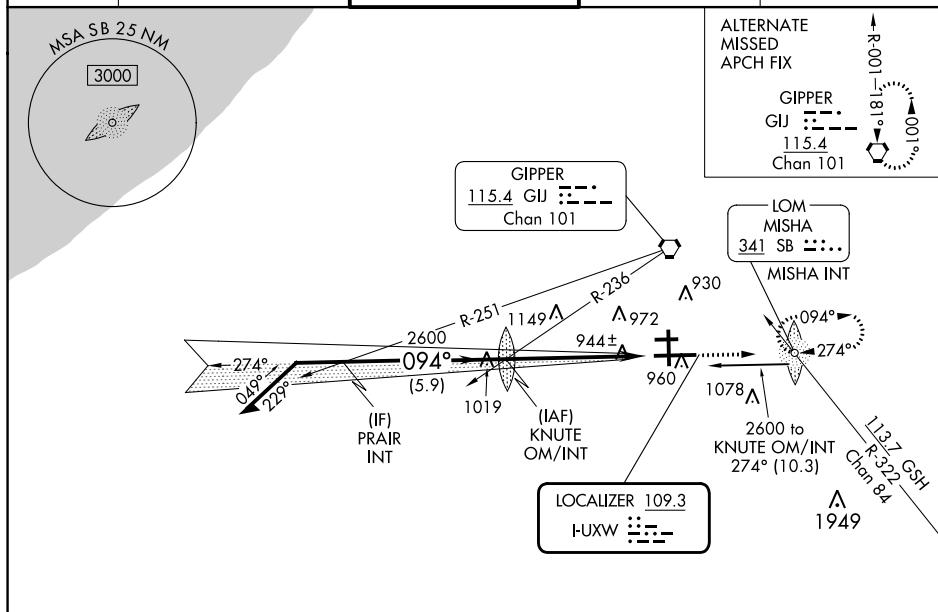


MALSF



MISSED APPROACH: Climb to 3000 direct MISHA LOM/INT and hold, continue climb-in-hold to 3000.

ATIS 120.675	SOUTH BEND APP CON★ 118.55 257.8	SOUTH BEND TOWER★ 135.675 (CTAF) 0 257.8	GND CON 121.7	CLNC DEL 121.9
-----------------	-------------------------------------	---	------------------	-------------------



SOUTH BEND, INDIANA

Amdt 10D 07SEP23

SOUTH BEND INTL (SRN)

ILS or LOC RWY 9R

41°42'N-86°19'W

EC-2, 03 OCT 2024 to 31 OCT 2024

EC-2, 03 OCT 2024 to 31 OCT 2024

Missed Adj
TREE (904)18-068464

ILS
TREE (904)18-068464

MISHA LOM

KSNB
SOUTH BEND INTL
SOUTH BEND, IN
ILS OR LOC RWY 9R A11
LOC FINAL & CIRCLING
1:100,000

**Missed Level Surface
AAO (1008)**

**Circling CAT B
WATER_TOWER (976)18-068338**

**Circling CAT D
TOWER (1158)18-001113**

**Circling CAT A
TREE (975)18-068300**

**LOC KSNB OM 7:1 Excluded Obs
TOWER (949)18-001015**

**LOC KNUTE OM to KSNB:RW09R:AER
TREE (944)18-068012**

**Circling CAT C
BUILDING (1078)18-000388**

KSNB
SOUTH BEND INTL
SOUTH BEND, IN
ILS OR LOC RWY 9R A11
LOC FINAL & CIRCLING
1:100,000

**Missed Level Surface
AAO (1008)**

**Circling CAT B
WATER_TOWER (976)18-068338**

**Circling CAT D
TOWER (1158)18-001113**

**Circling CAT A
TREE (975)18-068300**

**LOC KSNB OM 7:1 Excluded Obs
TOWER (949)18-001015**

**LOC KNUTE OM to KSNB:RW09R:AER
TREE (944)18-068012**

**Circling CAT C
BUILDING (1078)18-000388**

KSNB
SOUTH BEND INTL
SOUTH BEND, IN
ILS OR LOC RWY 9R A11
LOC FINAL & CIRCLING
1:100,000

Missed Level Surface
AAO (1008)

Circling CAT B
WATER_TOWER (976)18-068338

Circling CAT D
TOWER (1158)18-001113

Circling CAT A
TREE (975)18-068300

LOC KSNB OM 7:1 Excluded Obs
TOWER (949)18-001015

LOC KNUTE OM to KSNB:RW09R:AER
TREE (944)18-068012

Circling CAT C
BUILDING (1078)18-000388

KSBN
SOUTH BEND INTL
SOUTH BEND, IN
ILS OR LOC RWY 9R A11
LOC FINAL & CIRCLING
1:100,000

Missed Level Surface
AAO (1008)

Circling CAT B
WATER_TOWER (976)18-068338

Circling CAT D
TOWER (1158)18-001113

Circling CAT A
TREE (975)18-068300

LOC KSBN OM 7:1 Excluded Obs
TOWER (949)18-001015

LOC KNUTE OM to KSBN:RW09R:AER
TREE (944)18-068012

Circling CAT C
BUILDING (1078)18-000388

KSBN
SOUTH BEND INTL
SOUTH BEND, IN
ILS OR LOC RWY 9R A11
LOC FINAL & CIRCLING
1:100,000

Missed Level Surface
AAO (1008)

Circling CAT B
WATER_TOWER (976)18-068338

Circling CAT D
TOWER (1158)18-001113

Circling CAT A
TREE (975)18-068300

LOC KSBN OM 7:1 Excluded Obs
TOWER (949)18-001015

LOC KNUTE OM to KSBN:RW09R:AER
TREE (944)18-068012

Circling CAT C
BUILDING (1078)18-000388

KSNB
SOUTH BEND INTL
SOUTH BEND, IN
ILS OR LOC RWY 9R A11
LOC FINAL & CIRCLING
1:100,000

**Missed Level Surface
AAO (1008)**

**Circling CAT B
WATER_TOWER (976)18-068338**

**Circling CAT D
TOWER (1158)18-001113**

**Circling CAT A
TREE (975)18-068300**

**LOC KSNB OM 7:1 Excluded Obs
TOWER (949)18-001015**

**LOC KNUTE OM to KSNB:RW09R:AER
TREE (944)18-068012**

**Circling CAT C
BUILDING (1078)18-000388**

KSBN
SOUTH BEND INTL
SOUTH BEND, IN
ILS OR LOC RWY 9R A11
IF, ILS FINAL, MA & HOLDING, CIH
1:500,000

PRAIR to KNUTE OM
TOWER (1179)18-000073

ILS
TREE (904)18-068464

CTC SOUTH BEND APP WITHIN
20 NM ON 118.55 257.8

CTC SOUTH BEND APP WITHIN
20 NM ON 132.05 257.8

Missed Level Surface
AAO (1008)

MISHA LOM Holding
TOWER (1300)18-001499

MISHA LOM CIH
TOWER (1949)18-002311

