

FEDERAL AVIATION ADMINISTRATION
FLIGHT STANDARDS SERVICE
STANDARD TERMINAL ARRIVAL (STAR)

Bearings, headings, courses, tracks and radials are magnetic. Elevations and altitudes are in feet, MSL. Altitudes are minimum altitudes unless otherwise indicated.
Distances are in nautical miles (NM). Graphic depictions attached.

Arrival Name	Number	STAR Computer Code	Superseded Number	Dated	Effective Date
CLASH (RNAV)	ONE	CLASH.CLASH1	NONE		

TRANSITION ROUTES:

Transition Name	Transition Computer Codes	From FIX/NAVAID	To FIX/NAVAID	Course	Distance	MEA	MOCA	MAA	Crossing Altitudes / Fixes
KIIS	KIIS.CLASH1	KIIS	KIIS						
			DYLLN	294.44	42.48	FL200			
			WAIYN	293.87	43.26	FL200			AT/ABOVE FL300
			LYNKN	293.84	10.79	FL200			
			CLASH	293.38	27.97	15000	7900		
OATHE	OATHE.CLASH1	OATHE	OATHE						
			THINN	261.30	21.71	FL200			
			ININN	277.69	30.50	FL200			AT/ABOVE FL300
			LYNKN	277.38	14.61	FL200			
			CLASH	293.38	27.97	15000	7900		

ARRIVAL ROUTE DESCRIPTION:

FROM CLASH ON TRACK 296.30/16.56 TO CROSS EVRLY BETWEEN 15000 AND 20000 AND AT 250 KIAS.

LANDING RWY 7, 8: FROM EVRLY ON TRACK 298.69/11.44 TO CROSS HASHE BETWEEN 15000 AND 17000, THEN ON TRACK 288.60/18.60 TO CROSS ROOTZ BETWEEN 13000 AND 15000 AND AT 250 KIAS, THEN ON TRACK 295.28/5.36 TO RPIDS, THEN ON TRACK 263.06/4.74 TO CROSS BBOOK AT 11000 AND AT 210 KIAS, THEN ON TRACK 263.06. EXPECT RADAR VECTORS TO FINAL APPROACH COURSE.

LANDING RWY 25, 26, 16L, 17L/R: FROM EVRLY ON TRACK 298.69/11.44 TO CROSS HASHE BETWEEN 15000 AND 17000, THEN ON TRACK 300.23/17.19 TO CROSS JAAAM BETWEEN 13000 AND 15000 AND AT 250 KIAS, THEN ON TRACK 337.05/7.20 TO HUDPI, THEN ON TRACK 352.53/5.00 TO CROSS QWIKE AT 11000 AND AT 210 KIAS, THEN ON TRACK 352.53. EXPECT RADAR VECTORS TO FINAL APPROACH COURSE.

LANDING RWY 16R: FROM EVRLY ON TRACK 298.69/11.44 TO CROSS HASHE BETWEEN 15000 AND 17000, THEN ON TRACK 288.60/18.60 TO CROSS ROOTZ BETWEEN 13000 AND 15000 AND AT 250 KIAS, THEN ON TRACK 295.28/5.36 TO RPIDS, THEN ON TRACK 294.83/10.63 TO RDDVL, THEN ON TRACK 352.51/5.00 TO CROSS CLFF AT 11000 AND AT 210 KIAS, THEN ON TRACK 352.51. EXPECT RADAR VECTORS TO FINAL APPROACH COURSE.

LANDING RWY 34L/R, 35L: FROM EVRLY ON TRACK 259.50/16.42 TO CROSS TWNSN BETWEEN 12000 AND 13000 AND AT 210 KIAS, THEN ON TRACK 259.31/4.01 TO CROSS PNBAL AT 11000, THEN ON TRACK 259.54/4.01 TO CROSS ROCCS AT OR ABOVE 10000, THEN ON TRACK 259.98/4.88 TO CROSS EBLR AT 9000 AND AT 210 KIAS, THEN ON TRACK 259.98. EXPECT RADAR VECTORS TO FINAL APPROACH COURSE.

LANDING RWY 35R: FROM EVRLY ON TRACK 259.50/16.42 TO CROSS TWNSN BETWEEN 12000 AND 13000 AND AT 210 KIAS, THEN ON TRACK 259.31/4.01 TO CROSS PNBAL AT 11000, THEN ON TRACK 259.54/4.01 TO CROSS ROCCS AT OR ABOVE 10000, THEN ON TRACK 297.99/4.00 TO CROSS PURRL AT 9000 AND AT 210 KIAS. EXPECT ILS OR LOC RWY 35R APPROACH.

PROCEDURAL DATA NOTES:

NOTE: RADAR REQUIRED

NOTE: RNAV 1

NOTE: DME/DME/IRU OR GPS REQUIRED

NOTE: TURBOJET AIRCRAFT ONLY

NOTE: Expect runway assignment on initial contact with Denver TRACON.

QUALITY
14
CHECKED

FEDERAL AVIATION ADMINISTRATION
FLIGHT STANDARDS SERVICE
STANDARD TERMINAL ARRIVAL (STAR)

Bearings, headings, courses, tracks and radials are magnetic. Elevations and altitudes are in feet, MSL. Altitudes are minimum altitudes unless otherwise indicated.
Distances are in nautical miles (NM). Graphic depictions attached.

Arrival Name	Number	STAR Computer Code	Superseded Number	Dated	Effective Date
CLASH (RNAV)	ONE	CLASH.CLASH1	NONE		

FIXES AND/OR HOLDING PATTERNS:

CHART HOLDING AT CLASH: HOLD SE, LT, 293.38 INBOUND, 10 NM LEGS.
CHART HOLDING AT DYLLN: HOLD SE, LT, 294.44 INBOUND, 10 NM LEGS.
CHART HOLDING AT EVRLY: HOLD SE, LT, 296.30 INBOUND, 10 NM LEGS.
CHART IDOLL AND HOLDING AT IDOLL: HOLD SE, LT, 304.74 INBOUND, 11 NM LEGS.
CHART HOLDING AT ININN: HOLD E, LT, 277.69 INBOUND, 12 NM LEGS.
CHART HOLDING AT LYNKN: HOLD SE, RT, 293.84 INBOUND, 12 NM LEGS.
CHART HOLDING AT OATHE: HOLD E, RT, 261.30 INBOUND, 12 NM LEGS.

COMMUNICATIONS:

DENVER APP CON, D-ATIS ARR, DENVER TOWER

AIRPORTS SERVED:

DENVER INTL, DENVER, CO (KDEN)

LOST COMMUNICATIONS PROCEDURE:

In the event of lost communications prior to runway transition assignment, when DEN is landing south, execute the ILS RWY 17R, when DEN is landing north, execute the ILS RWY 35R.

REMARKS:

MEA'S FL200 AND ABOVE NEEDED TO MITIGATE CRITICAL DME'S AND INSURE ADEQUATE SIGNAL RECEPTION FOR DME/DME/IRU NAVIGATION.

ADDITIONAL FLIGHT DATA:

DME/DME ASSESSMENT: SAT (RNP 2.0)
REFERENCE MAGNETIC VARIATION = KDEN 08E/2015
CHART AT EBBLR TERMINUS: LDG KDEN RWYS 34L/R, 35L
CHART AT PURRL TERMINUS: LDG KDEN RWYS 35R
CHART AT BBOOK TERMINUS: LDG KDEN RWYS 07, 08
CHART AT QWIKI TERMINUS: LDG KDEN RWYS 16L, 17L/R, 25 AND 26
CHART AT CLFFF TERMINUS: LDG KDEN RWYS 16R



FEDERAL AVIATION ADMINISTRATION
FLIGHT STANDARDS SERVICE
STANDARD TERMINAL ARRIVAL (STAR)

Bearings, headings, courses, tracks and radials are magnetic. Elevations and altitudes are in feet, MSL. Altitudes are minimum altitudes unless otherwise indicated.
Distances are in nautical miles (NM). Graphic depictions attached.

Arrival Name	Number	STAR Computer Code	Superseded Number	Dated	Effective Date
CLASH (RNAV)	ONE	CLASH.CLASH1	NONE		
<u>FLIGHT INSPECTED BY:</u>				<i>Digitally signed by</i> JACOB POWERS Jan 23, 2020	
BRYAN VEIT			1/17/20		
Name			Date	Signature	
<u>DEVELOPED BY:</u>				<i>Digitally signed by</i> JACOB POWERS Jan 23, 2020	
John E. Connolly Denver Metroplex Manager			6/25/2019		
Name			Date	Signature	
<u>APPROVED BY:</u>				<i>Digitally signed by</i> JACOB POWERS Jan 23, 2020	
PAT MULQUEEN, MANAGER					
Name			Date	Signature	

CHANGES:

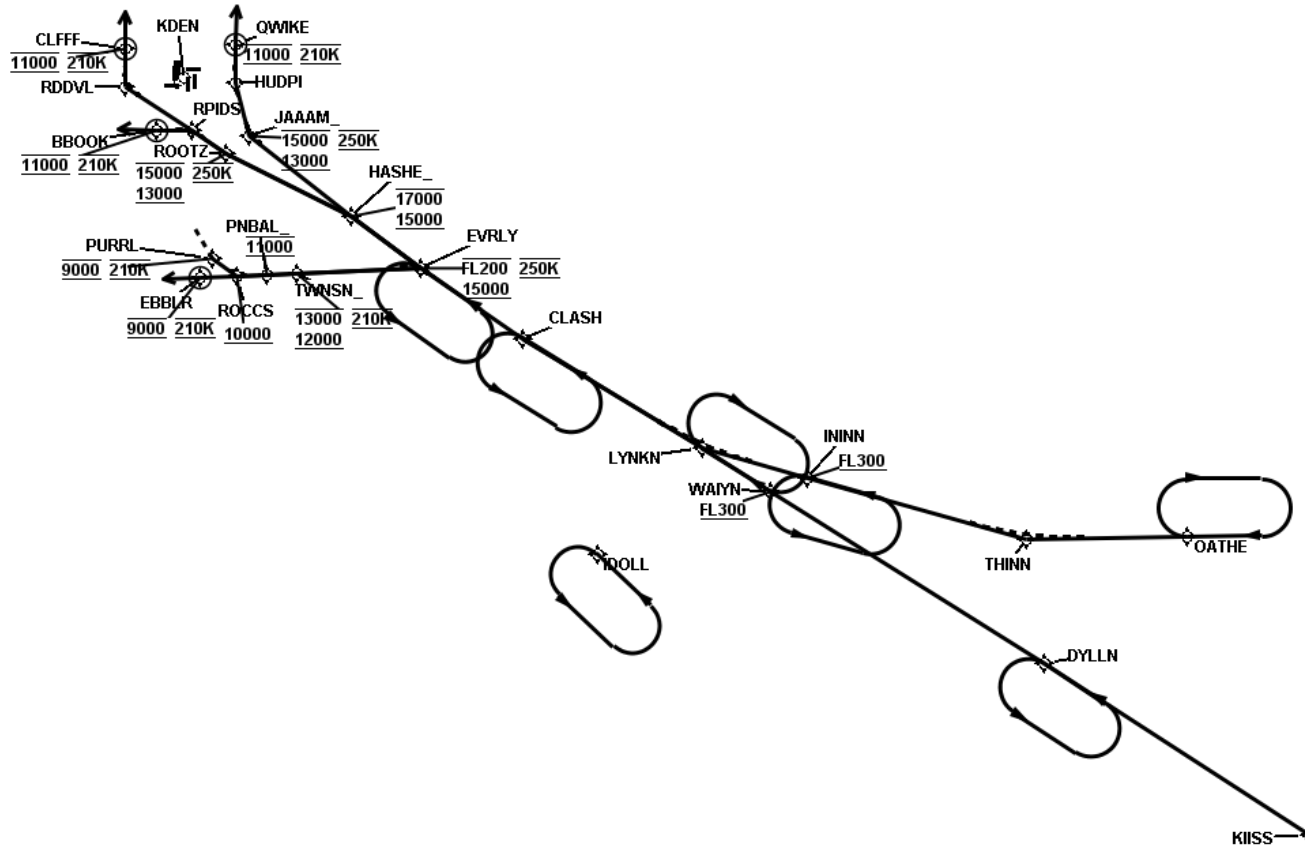
REASONS:



FEDERAL AVIATION ADMINISTRATION
FLIGHT STANDARDS SERVICE
STANDARD TERMINAL ARRIVAL (STAR)

Bearings, headings, courses, tracks and radials are magnetic. Elevations and altitudes are in feet, MSL. Altitudes are minimum altitudes unless otherwise indicated.
Distances are in nautical miles (NM). Graphic depictions attached.

Arrival Name	Number	STAR Computer Code	Superseded Number	Dated	Effective Date
CLASH (RNAV)	ONE	CLASH.CLASH1	NONE		
Graphic Depiction 1					



FEDERAL AVIATION ADMINISTRATION
FLIGHT STANDARDS SERVICE
STAR (DATA RECORD)

Arrival Name CLASH (RNAV)	Number ONE	STAR Computer Code CLASH.CLASH1		Superseded Number NONE		Dated	Effective Date		
FIX/NAVAID	LAT/LONG	C	FO/FB	LEG TYPE	TC	DIST (NM)	ALTITUDE	SPEED	REMARKS
En Route Transition									
KIISS	381136.34N / 1012636.25W	Y		IF					KIISS.CLASH1
DYLLN	383416.08N / 1021218.74W	Y	FB	TF	302.44	42.48			
WAIYN	385658.72N / 1025924.53W	Y	FB	TF	301.87	43.26	AT/ABOVE FL300		
LYNKN	390240.14N / 1031110.79W	Y	FB	TF	301.84	10.79			
CLASH	391710.87N / 1034156.10W	Y	FB	TF	301.38	27.97			
En Route Transition									
OATHE	385059.03N / 1014739.33W	Y		IF					OATHE.CLASH1
THINN	385039.68N / 1021526.85W	Y	FB	TF	269.30	21.71			
ININN	385848.87N / 1025305.95W	Y	FB	TF	285.69	30.50	AT/ABOVE FL300		
LYNKN	390240.14N / 1031110.79W	Y	FB	TF	285.38	14.61			
CLASH	391710.87N / 1034156.10W	Y	FB	TF	301.38	27.97			
Common Route									
CLASH	391710.87N / 1034156.10W	Y		IF					CLASH.CLASH1
EVRLY	392630.06N / 1035935.67W	Y	FB	TF	304.30	16.56	15000BFL200	AT 250K	
Runway Transition									
EVRLY	392630.06N / 1035935.67W	Y		IF			15000BFL200	AT 250K	
HASHE	393319.78N / 1041127.02W	Y	FB	TF	306.69	11.44	15000B17000		
ROOTZ	394138.07N / 1043259.98W	Y	FB	TF	296.60	18.60	13000B15000	AT 250K	
RPIDS	394434.57N / 1043848.54W	Y	FB	TF	303.28	05.36			
BBOOK	394439.67N / 1044456.83W	Y	FO	TF	271.06	04.74	AT 11000	AT 210K	
KDEN:RWY 7,RWY 8				FM	271.06				
Runway Transition									
EVRLY	392630.06N / 1035935.67W	Y		IF			15000BFL200	AT 250K	
HASHE	393319.78N / 1041127.02W	Y	FB	TF	306.69	11.44	15000B17000		
JAAAM	394357.46N / 1042857.43W	Y	FB	TF	308.23	17.19	13000B15000	AT 250K	

FEDERAL AVIATION ADMINISTRATION
FLIGHT STANDARDS SERVICE
STAR (DATA RECORD)

Arrival Name CLASH (RNAV)		Number ONE		STAR Computer Code CLASH.CLASH1		Superseded Number NONE		Dated	Effective Date
FIX/NAVAID	LAT/LONG	C	FO/FB	LEG TYPE	TC	DIST (NM)	ALTITUDE	SPEED	REMARKS
HUDPI	395055.21N / 1043122.20W	Y	FB	TF	345.05	07.20			
QWIKI	395555.43N / 1043118.56W	Y	FO	TF	000.53	05.00	AT 11000	AT 210K	
KDEN:RWY 16L,RWY 17L,RWY 17R,RWY 25,RWY 26				FM	000.53				
Runway Transition									
EVRLY	392630.06N / 1035935.67W	Y		IF			15000BFL200	AT 250K	
HASHE	393319.78N / 1041127.02W	Y	FB	TF	306.69	11.44	15000B17000		
ROOTZ	394138.07N / 1043259.98W	Y	FB	TF	296.60	18.60	13000B15000	AT 250K	
RPIDS	394434.57N / 1043848.54W	Y	FB	TF	303.28	05.36			
RDDVL	395019.88N / 1045024.03W	Y	FB	TF	302.83	10.63			
CLFFF	395520.10N / 1045020.55W	Y	FO	TF	000.51	05.00	AT 11000	AT 210K	
KDEN:RWY 16R				FM	000.51				
Runway Transition									
EVRLY	392630.06N / 1035935.67W	Y		IF			15000BFL200	AT 250K	
TWNSN	392545.21N / 1042045.89W	Y	FB	TF	267.50	16.42	12000B13000	AT 210K	
PNBAL	392533.80N / 1042556.05W	Y	FB	TF	267.31	04.01	AT 11000		
ROCCS	392523.36N / 1043106.25W	Y	FB	TF	267.54	04.01	AT/ABOVE 10000		
EBBLR	392512.85N / 1043723.62W	Y	FO	TF	267.98	04.88	AT 9000	AT 210K	
KDEN:RWY 34L,RWY 34R,RWY 35L				FM	267.98				
Runway Transition									
EVRLY	392630.06N / 1035935.67W	Y		IF			15000BFL200	AT 250K	
TWNSN	392545.21N / 1042045.89W	Y	FB	TF	267.50	16.42	12000B13000	AT 210K	
PNBAL	392533.80N / 1042556.05W	Y	FB	TF	267.31	04.01	AT 11000		
ROCCS	392523.36N / 1043106.25W	Y	FB	TF	267.54	04.01	AT/ABOVE 10000		
PURRL	392744.44N / 1043516.99W	Y	FB	TF	305.99	04.00	AT 9000	AT 210K	
KDEN:RWY 35R									