

Flight Procedures Cover Page	Task Action: FLIGHT CHECK	Task Type: IAP	Estimated Chart Date: 08/11/2022	APWS Task ID: C05E3838B99D42DD897C20300D1D7E1C	APWS Project ID: 658B799DFB8E45DFAFF1AB864110EE82
Procedure: RNAV (GPS) RWY 7 AMDT 2D		Enroute: NO	Specialist: Donahue, Liam		Agreement Number:
Airport ID: KORL			Airport City: ORLANDO		State: FL
Facility ID:	Facility Type:	Flight Inspection Remark Type: New FC Slot			
<div>Procedure Comments: CANCELS !FDC 1/2369 ORL IAP EXEC, ORLANDO, FL. RNAV (GPS) RWY 7, AMDT 2C... LPV MINIMUMS AND WAAS VNAV NA. UPDATED FAS DATA. CONTACT: DON LANIER, AJV, A431 MANAGER, 405.954-8242 2101081738-2301081737EST</div> <div>QUALITY 2 CHECKED</div> <div>QUALITY 38 CHECKED</div>					

OLD

ORLANDO, FLORIDA

AD-305 (FAA)

20310

WAAS CH 70729 W07A	APP CRS 073°	Rwy Idg 5704 TDZE 109 Apt Elev 113
--	------------------------	---

RNAV (GPS) RWY 7

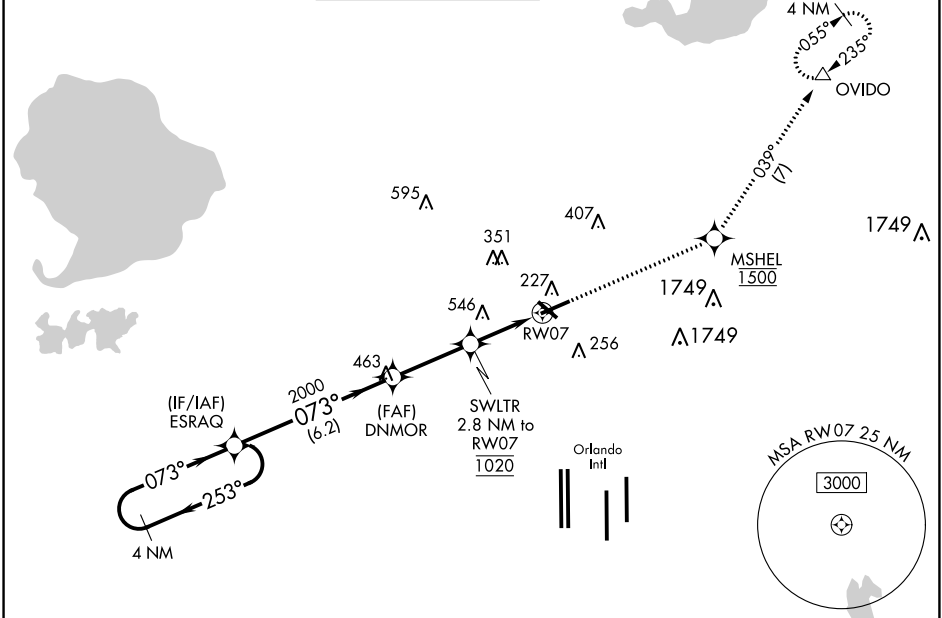
EXECUTIVE (ORL)

RNP APCH.

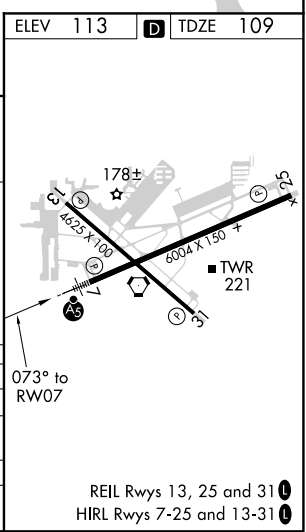
For uncompensated Baro-VNAV systems, LNAV/VNAV NA below 2°C or above 54°C. Circling Rwy 31 NA at night. For inop ALS, increase LPV all Cats visibility to RVR 4500, increase LNAV/VNAV all Cats visibility to RVR 5000, increase LNAV Cat A/B visibility to RVR 5500 and Cats C/D to 1¼ SM. In minimum visibility conditions, bright lights on highway ½ mile south of airport may be mistaken for runway lights. Rwy 7 helicopter visibility reduction below ¾ SM NA.

MALSR
MISSED APPROACH:
Climb to 1500 direct
MSHEL, cross MSHEL
at 1500, then climb
to 1600 on track 039°
to OVIDO and hold.

ATIS 127.25	ORLANDO APP CON 124.8 351.9	EXECUTIVE TOWER ★ 118.7 (CTAF) 0 239.0	GND CON 121.4 239.0	CLNC DEL 128.45	UNICOM 122.95
-----------------------	---------------------------------------	--	-------------------------------	---------------------------	-------------------------



--	--	--	--



ORLANDO, FLORIDA
Amdt 2C 05NOV20

28°33'N-81°20'W

EXECUTIVE (ORL)
RNAV (GPS) RWY 7

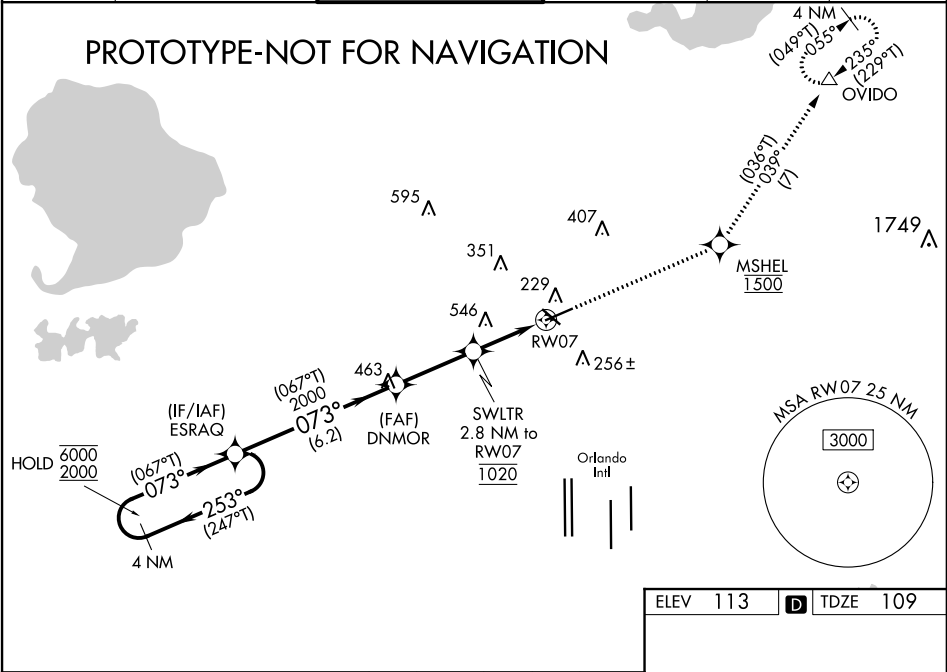
SE-3, 05 NOV 2020 to 03 DEC 2020

SE-3, 05 NOV 2020 to 03 DEC 2020

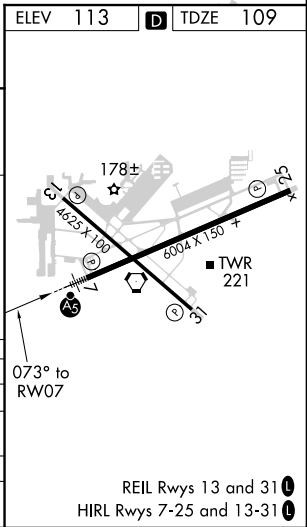
WAAS CH 70729 W07A	APP CRS 073°	Rwy Idg 5704 TDZE 109 Apt Elev 113
--	------------------------	---

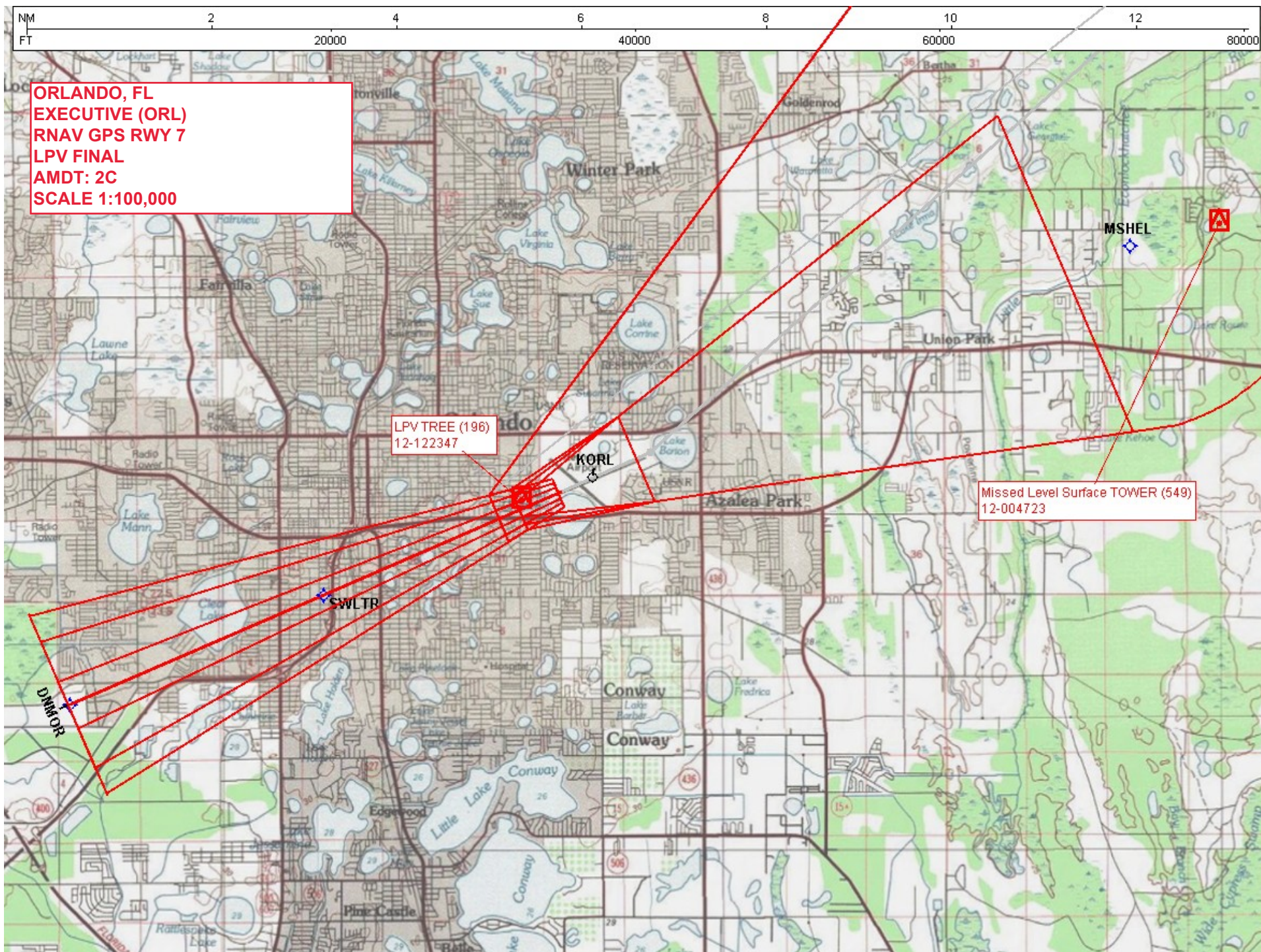
RNAV (GPS) RWY 7
EXEC (ORL)

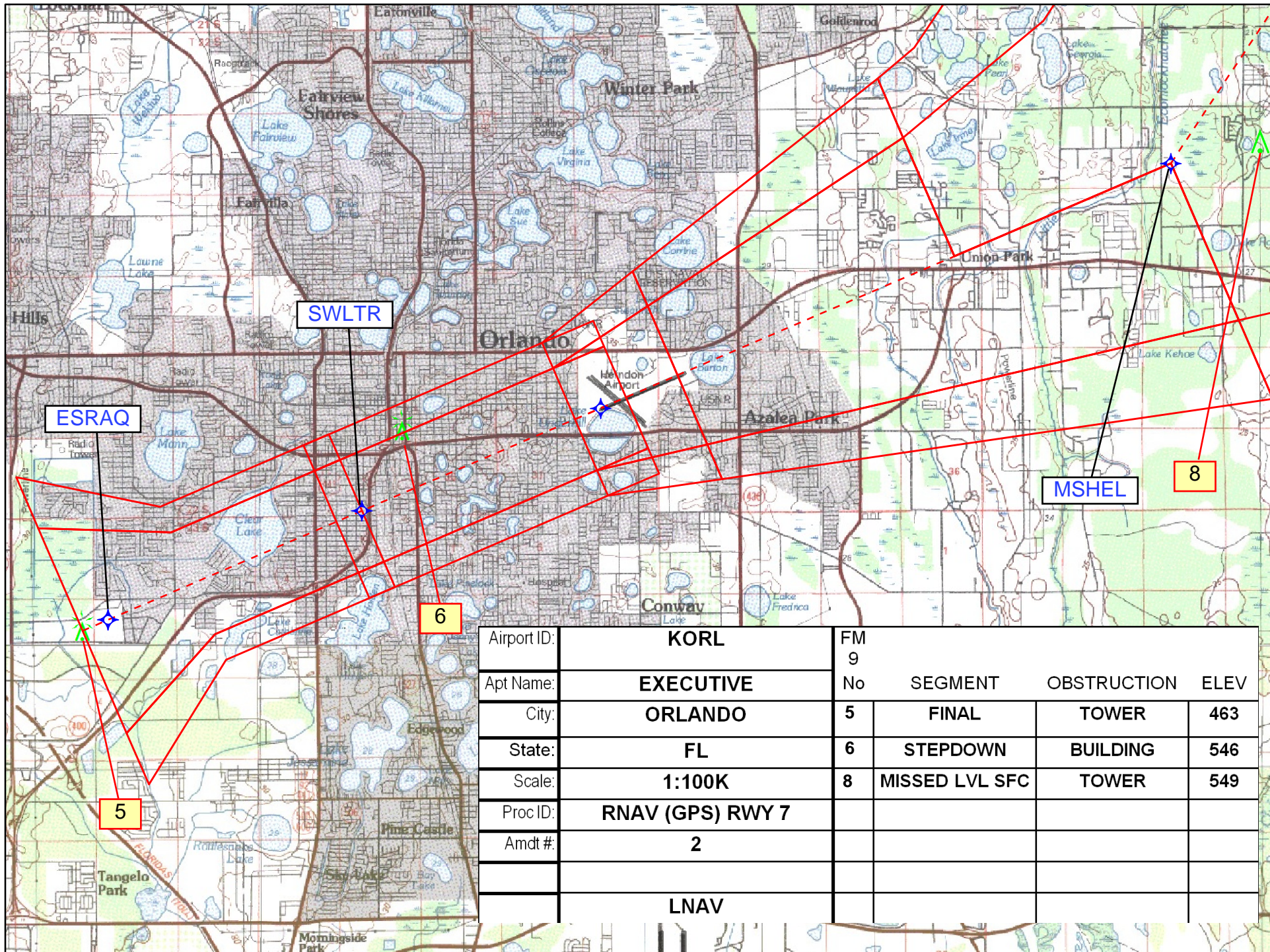
RNP APCH - GPS. ▼ Circling Rwy 31 NA at night. Rwy 7 helicopter visibility reduction below ¾ SM NA. For uncompensated Baro-VNAV systems, LNAV/VNAV NA below 2° C or above 54° C. For inop ALS, increase LPV all Cats visibility to RVR 4500, increase LNAV/VNAV all Cats visibility to RVR 5000, increase LNAV Cat A/B visibility to RVR 5500 and Cats C/D to 1¾ SM. In minimum visibility conditions, bright lights on highway ½ mile south of airport may be mistaken for runway lights.				MALSR AS	MISSED APPROACH: Climb to 1500 direct MSHEL, cross MSHEL at 1500, then climb to 1600 on track 039° to OVIDO and hold.
ATIS 127.25	ORLANDO APP CON 124.8 351.9	EXECUTIVE TOWER ★ 118.7 (CTAF) 0 239.0	GND CON 121.4 239.0	CLNC DEL 128.45	UNICOM 122.95



4 NM Holding Pattern		ESRAQ	DNMR	1500	MSHEL 1500	1600	tr 039°	OVIDO
6000 2000		GP 3.00° TCH 52	2000	2000	1020	1020	1.9 NM to RW07	RW07
6.2 NM		3 NM	0.9	1.9				
CATEGORY	A	B	C	D				
LPV DA	391/40		282 (300-¾)					
LNAV/VNAV DA	447/40		338 (400-¾)					
LNAV MDA	740/40		631 (700-¾)		740-1⅜		631 (700-1⅜)	
CIRCLING	740-1		627 (700-1)		860-2¼		860-2½	
					747 (800-2¼)		747 (800-2½)	







Airport ID:	KORL	FM			
		9			
Apt Name:	EXECUTIVE	No	SEGMENT	OBSTRUCTION	ELEV
City:	ORLANDO	5	FINAL	TOWER	463
State:	FL	6	STEPDOWN	BUILDING	546
Scale:	1:100K	8	MISSED LVL SFC	TOWER	549
Proc ID:	RNAV (GPS) RWY 7				
Amdt #:	2				
	LNAV				

NM 1 2 3 4 5 6 7 8 9 10 11 12 13 14

FT 8000 16000 24000 32000 40000 48000 56000 64000 72000 80000

fpoprg | orl_ils25 (PROD) | 29 Mar 2016 06:30:50 | 1" = 8333.3 feet (MAP)

Airport ID:	KORL
Apt Name:	EXECUTIVE
City:	ORLANDO
State:	FL
Scale:	1:100K
Proc ID:	RNAV (GPS) RWY 7
Amdt #:	2
	CIRCLING

FM			
9			
No	SEGMENT	OBSTRUCTION	ELEV
10	CIRC CAT A	TOWER	263
11	CIRC CAT B	BLDG	375
12	CIRC CAT C	BLDG	546
12	CIRC CAT D	BLDG	546

