

Flight Procedures Cover Page	Task Action: Abbreviated Amendment	Task Type: IAP	Estimated Chart Date: 02/25/2021	APWS Task ID: BFE98881885B44B8AEC9D71B76F39D55	APWS Project ID: FC6A74D6B29C4A2CBF721A36E05A06EB
Procedure: ILS OR LOC RWY 24R AMDT 26A		Enroute: NO	Specialist: Barnes, Kellie		Agreement Number:
Airport ID: KLAX	Airport Name: LOS ANGELES INTL		Airport City: LOS ANGELES		State: CA
Facility ID: OSS	Facility Type: ILS	Flight Inspection Remark Type: New FC Slot			
<div>Procedure Comments:</div> <div>ACTIVE DATA USED FOR KLAX, PENDING DATA USED FOR I-OSS</div> <div>PROCESSED IAW AIRCRAFT OPERATIONS GROUP (AJF-10) MEMO, APRIL 29, 2020 SUBJECT: FLIGHT INSPECTION REVIEW NOT REQUIRED.</div> <div>CONTACT ALLAN WILL 405-954-6103</div>					

QUALITY
6
CHECKED
SN 10/30/20

QUALITY
41
CHECKED

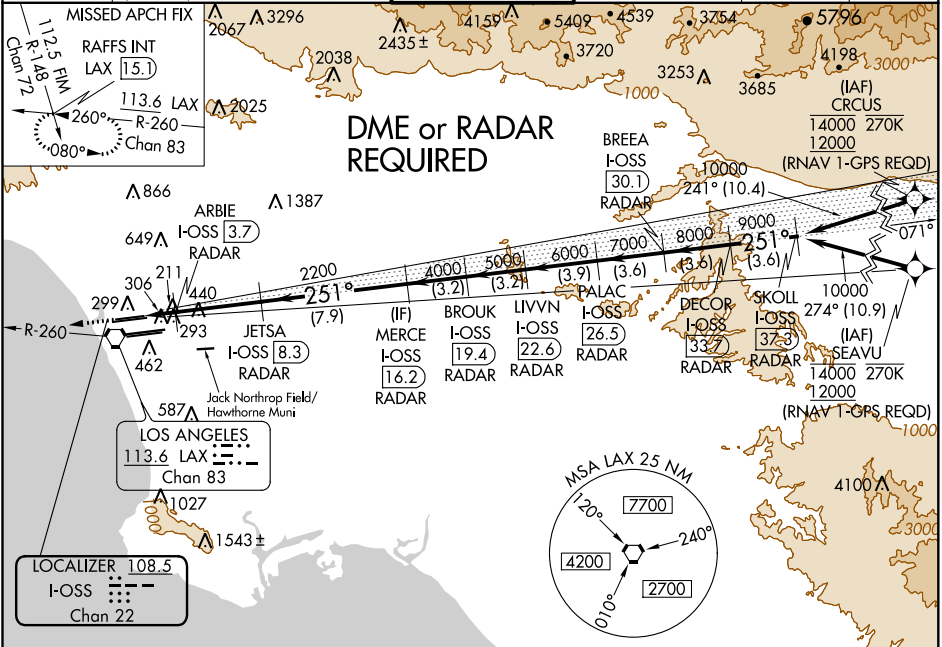
LOC/DME I-OSS 108.5 Chan 22	APP CRS 251°	Rwy Idg TDZE Apt Elev	24R 8926 122 128	24L 9483 123 128
---	------------------------	-----------------------------	--	--


OLD

ILS or LOC RWY 24R
LOS ANGELES INTL (LAX)

▼ DME or RADAR required. LOC procedure NA during simultaneous operations with HHR LOC RWY 25. Simultaneous approach authorized. Simultaneous approach authorized with HHR. For inop ALS, increase S-LOC 24R Cat C/D visibility to RVR 5500.	ALSIF-2 Rwy 24R 	MALSR Rwy 24L 	MISSED APPROACH: Climb to 2000 on heading 251° and LAX VORTAC R-260 to RAFFS INT/LAX 15.1 DME and hold.
--	------------------------	----------------------	---

D-ATIS ARR 133.8 DEP 135.65	SOCAL APP CON 124.3 363.2 (APCH FM WEST) 124.5 235.975 (225°-044°)	124.9 269.0 (090°-224°) 128.5 360.7 (045°-089°)	LOS ANGELES TOWER N 133.9 239.3 S 120.95 379.1	GND CON N 121.65 327.0 S 121.75 327.0 W 121.4 327.0	CLNC DEL 120.35 327.0	CPDLC
---	--	--	--	---	---	-------



ELEV 128	<div>D</div> TDZE 24R 122 TDZE 24L 123	<div>2000</div> <div>hdg 251°</div>	LAX R-260	RAFFS INT	VGSI and ILS glidepath not coincident (VGSI Angle 3.00/TCH 73).				DECOR I-OSS 37.3 RADAR	SKOLL I-OSS 37.3 RADAR		
<div>251° 6.4 NM from FAF</div> <div></div>		*LOC only	ARBIE I-OSS 3.7 RADAR	JETSA I-OSS 8.3 RADAR	MERCE I-OSS 16.2 RADAR	BROUK I-OSS 19.4 RADAR	LIVVN I-OSS 22.6 RADAR	PALAC I-OSS 26.5 RADAR	BREEA I-OSS 30.1 RADAR	251° 10000		
		I-OSS 2	I-OSS 2.9	2200	4000	5000	6000	7000	8000	9000		
		0.9	0.8	4.6 NM	7.9 NM	3.2 NM	3.2 NM	3.9 NM	3.6 NM	3.6 NM		
TDZ/CL Rwy 6R, 7L, 24R, and 25L HIRL all Rwy		CATEGORY		A	B		C		D			
FAF to MAP 6.4 NM		S-ILS 24R		322/18 200 (200-½)								
		S-LOC 24R		480/24 358 (400-½)				480/30 358 (400-¾)				
Knots 60 90 120 150 180		SIDESTEP 24L		500/55 377 (400-1)							500-1½ 377 (400-1½)	
Min:Sec 6:24 4:16 3:12 2:34 2:08												

SW-3, 10 SEP 2020 to 08 OCT 2020

SW-3, 10 SEP 2020 to 08 OCT 2020

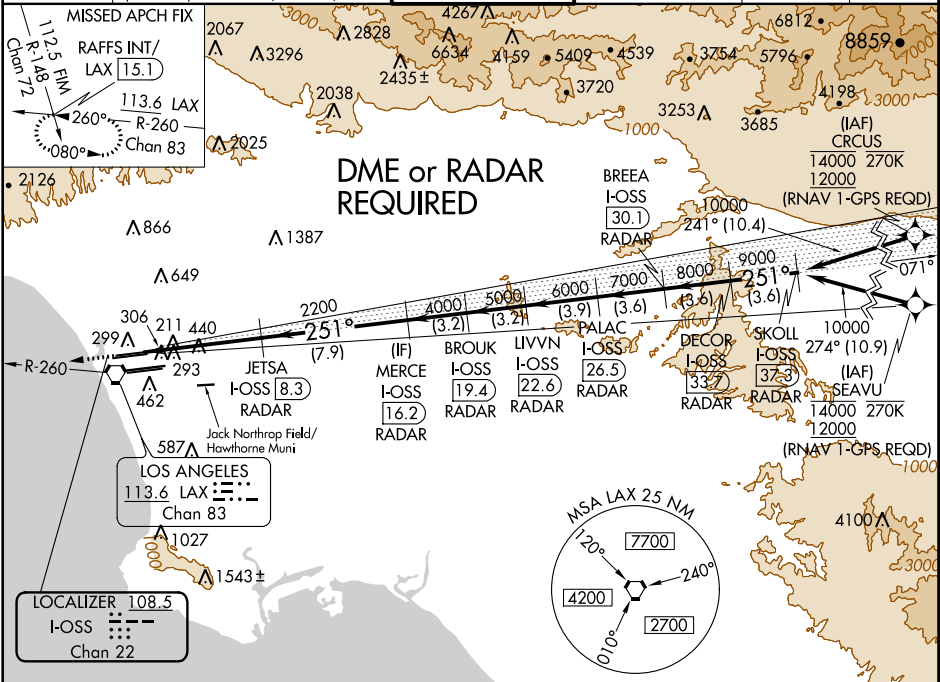
LOC/DME I-OSS 108.5 Chan 22	APP CRS 251°	Rwy Idg TDZE 122 Apt Elev 128	8926
---	------------------------	---	-------------

OLD

ILS RWY 24R (CAT II & III)
LOS ANGELES INTL (LAX)

▼ DME or RADAR required. Simultaneous approach authorized. Simultaneous approach authorized with HHR.	ALSF-2	MISSED APPROACH: Climb to 2000 on heading 251° and LAX VORTAC R-260 to RAFFS INT/LAX 15.1 DME and hold.
--	--------	---

D-ATIS ARR 133.8 DEP 135.65	SOCAL APP CON 124.3 363.2 (APCH FM WEST) 124.5 235.975 (225°-044°)	124.9 269.0 (090°-224°) 128.5 360.7 (045°-089°)	LOS ANGELES TOWER N 133.9 239.3 S 120.95 379.1	GND CON N 121.65 327.0 S 121.75 327.0 W 121.4 327.0	CLNC DEL 120.35 327.0	CPDLC
---	--	--	--	---	---	-------



ELEV 128	D TDZE 122	2000 ↑ hdg 251°		LAX R-260	RAFFS INT	VGSi and ILS glidepath not coincident (VGSi Angle 3.00/TCH 73).			BREEA I-OSS 30.1	DECOR I-OSS 33.7	SKOLL I-OSS 37.3
		JETSA I-OSS 8.3		MERCE I-OSS 16.2	BROOK I-OSS 19.4	LIVV I-OSS 22.6	PALAC I-OSS 26.5	BREEA I-OSS 30.1	DECOR I-OSS 33.7	SKOLL I-OSS 37.3	
		RADAR		RADAR	RADAR	RADAR	RADAR	RADAR	RADAR	RADAR	RADAR
		2200		2200	2200	2200	2200	2200	2200	2200	2200
		4000		4000	4000	4000	4000	4000	4000	4000	4000
6000		6000	6000	6000	6000	6000	6000	6000	6000	6000	
8000		8000	8000	8000	8000	8000	8000	8000	8000	8000	
10000		10000	10000	10000	10000	10000	10000	10000	10000	10000	
GS 3.00°		TCH 55									
CATEGORY		A		B		C		D			
S-ILS 24R		CAT II RA 118/12 100 DA 222									
S-ILS 24R		CAT III RVR 06									
CATEGORY II & III ILS - SPECIAL AIRCREW & AIRCRAFT CERTIFICATION REQUIRED											

Federal Aviation Administration Categorical Exclusion Declaration

Date: 09/21/20

IFP: Boitano, Tom (tom.boitano@faa.gov)

Airport Contact: -

Request ID: KLAX_20519

Single or Multiple Procedure: Multiple

Procedure Name(s): ILS or LOC Rwy 24L Amdt 28 ILS or LOC Rwy 24R Amdt 27 ILS or LOC Rwy 25L Amdt 15 ILS or LOC Rwy 25R Amdt 20 ILS Rwy 24R (Cat II & Cat III) Amdt 27 ILS Rwy 25L (Cat II & Cat III) Amdt 15 RNAV (RNP) Z Rwy 24L Amdt 3 RNAV (RNP) Z Rwy 24R Amdt 2 RNAV (RNP) Z Rwy 25L Amdt 3 RNAV (GPS) Y Rwy 24L Amdt 6 RNAV (GPS) Y Rwy 24R Amdt 4 RNAV (GPS) Y Rwy 25L Amdt 5 RNAV (GPS) Y Rwy 25R Amdt 4

Procedure Request Description:

On all procedures to the 24L/R and 25L/R runways, an initial stepdown fix will be changed to a new IAF. The fix will not move and the altitude will not change. These changes are being made for FMS compatibility and will ease cockpit workload. These are a safety enhancement to the existing procedures.

24L-FINESE; 24R-LIVVN; 25L-GAATE; 25R- FALLT

The name of the 24R PFAF will be changed from JETSA to KOBBS. The name of the 25L PFAF will be changed from LIMMA to JIANA.

The SMO VOR/DME will be charted on all procedures to Rwy 24L/24R for situational awareness improvement. This is a safety enhancement.

Declaration of Exclusion:

The FAA has reviewed the above referenced proposed action and it has been determined, by the undersigned, to be categorically excluded from further environmental documentation according to FAA Order 1050.1, "Environmental Impacts: Policies and Procedures." The implementation of this action will not result in any extraordinary circumstances in accordance with FAA Order 1050.1.

Basis for this Determination:

This review was conducted in accordance with policies and procedures in Department of Transportation Order 5610.1, "Procedures for Considering Environmental Impacts" and FAA Order 1050.1.

The applicable Categorical Exclusion is:

5-6.5.k: Publication of existing air traffic control procedures that do not essentially change existing tracks, create new tracks, change altitude, or change concentration of aircraft on these tracks. (ATO, AVS)

The above flight procedure has been developed within the accepted parameters.

Concurrence/Reviewed By: **Vikas Uberoi** Digitally signed by Vikas Uberoi
Date: 2020.09.21 08:59:09 -07'00' Date: _____

Title: Environmental Protection Specialist - Contract

Approved By: **RYAN WADE WELLER** Digitally signed by RYAN WADE
WELLER
Date: 2020.09.21 15:24:51 -07'00' Date: _____

Title: Environmental Protection Specialist - AJV W25
