

Flight Procedures Cover Page	Task Action: Cancellation	Task Type: IAP	Estimated Chart Date: 12/02/2021	APWS Task ID: BFBEDA63C5174FA5AA9F914D394A548F	APWS Project ID: 6BEF9B3E68804421AA53A9E9CF75DCDE
Procedure: VOR/DME-A AMDT 3A		Enroute: NO	Specialist: Malone, Tevar		Agreement Number:
Airport ID: KCFD			Airport City: BRYAN		State: TX
Facility ID:	Facility Type:	Flight Inspection Remark Type:			
<div>Procedure Comments: CONTACT: DAVID TEFFETELLER (202) 267-5177</div> <div>08/09/2021 QUALITY 14 CHECKED</div>					

BRYAN, TEXAS

AL-6276 (FAA)

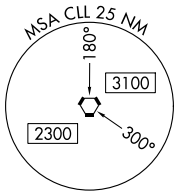
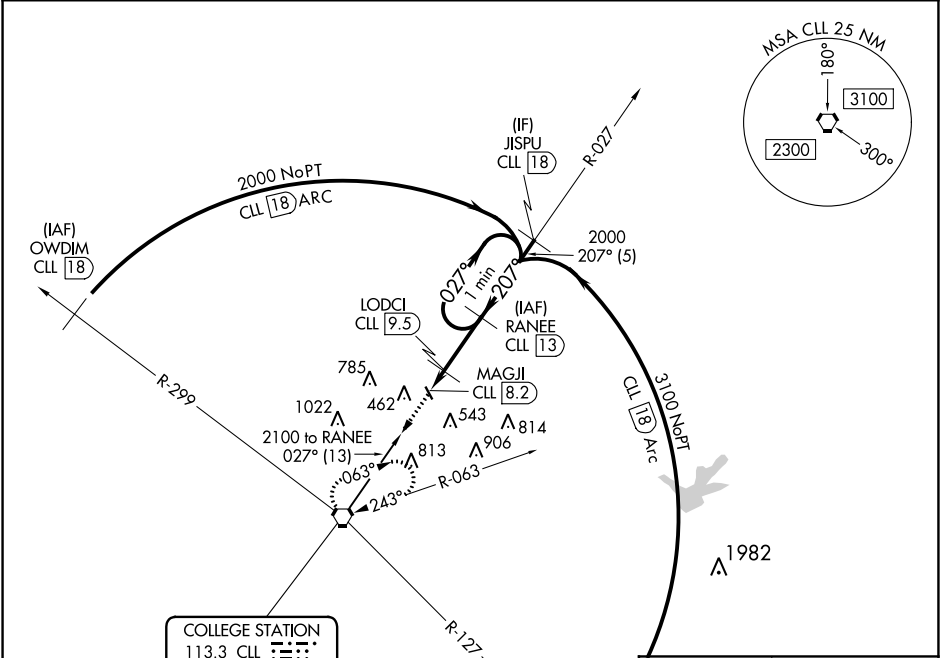
20254

VORTAC CLL <b>113.3</b> Chan <b>80</b>	APP CRS <b>207°</b>	Rwy Idg TDZE Apt Elev <b>367</b>	N/A N/A <b>367</b>
--	------------------------	---	--------------------------

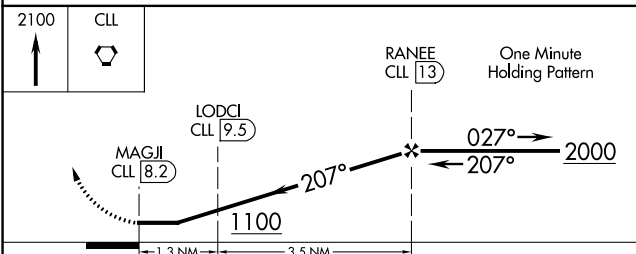
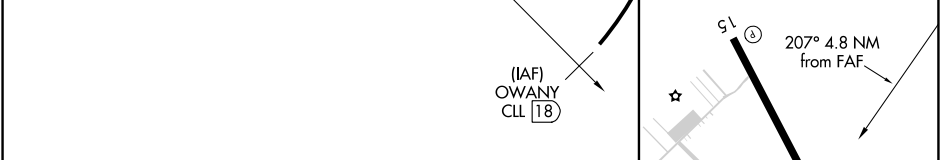
VOR/DME-A  
COULTER FIELD (CFD)

NA Use College Station altimeter setting; if not received, use Caldwell Muni altimeter setting and increase all MDAs 40 feet.	MISSED APPROACH: Climb to 2100 direct CLL VORTAC and hold.
---	--

AWOS-3PT <b>125.975</b>	CLL ASOS <b>126.85</b>	HOUSTON APP CON <b>134.3 360.85</b>	UNICOM <b>123.0 (CTAF)</b>
----------------------------	---------------------------	--	-------------------------------



ELEV 367
----------



CATEGORY	A	B	C	D
CIRCLING	800-1 433 (500-1)	920-1¼ 553 (600-1¼)	NA	

REIL Rwy 15-33 MIRL Rwy 15-33
----------------------------------

BRYAN, TEXAS  
Amdt 3A 03JAN19

30°43'N-96°20'W

COULTER FIELD (CFD)  
VOR/DME-A

SC-5, 15 JUL 2021 to 12 AUG 2021

SC-5, 15 JUL 2021 to 12 AUG 2021