

Flight Procedures Cover Page	Task Action: P-NOTAM	Task Type: IAP	Estimated Chart Date: 01/27/2022	APWS Task ID: BEF36BEF950448D78DE7A96BEE3A1978	APWS Project ID: D07117F9BB344C2D93558F18F8A2CEFB
Procedure: RNAV (GPS) RWY 4 AMDT 1B		Enroute: NO	Specialist: Thibodeaux, Charles		Agreement Number:
Airport ID: PHMU			Airport City: KAMUELA		State: HI
Facility ID:	Facility Type:	Flight Inspection Remark Type:			
<p>Procedure Comments: ORDER 8260.3, CHAPTER 2, NEW CIRCLING CRITERIA APPLIED CONTACT JASON KRETSCHMER, AJV-A421, 405-954-4019</p> <div style="display: flex; justify-content: space-between; align-items: flex-end;"> <div style="text-align: center;"> <p><i>Digitally signed by</i> JASON KRETSCHMER Dec 14, 2021</p> </div> <div style="text-align: center;"> <p><i>Digitally signed by</i> MARY MCDONALD Dec 14, 2021</p> </div> </div>					

QUALITY
47
CHECKED

QUALITY
12
CHECKED

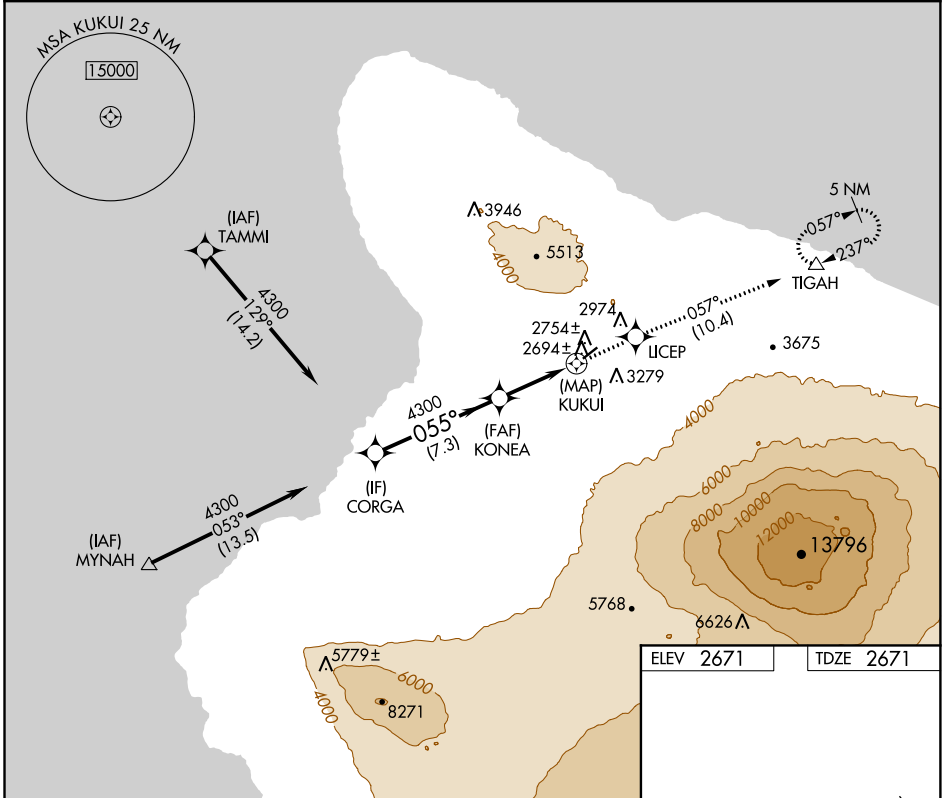
APP CRS	Rwy Idg	5197
055°	TDZE	2671
	Apt Elev	2671

RNAV (GPS) RWY 4

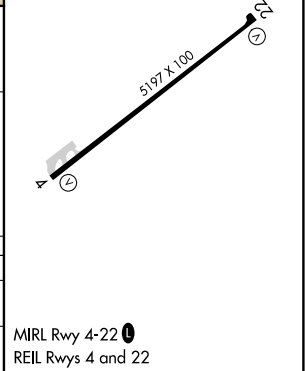
WAIMEA-KOHALA (MUE)(PHMU)

<p>NA</p> <p>Circling NA northwest of Rwy 4-22. When local altimeter setting not received, procedure NA. DME/DME RNP-0.3 NA.</p>	<p>MISSED APPROACH: Climb to 5000 direct UCEP and on track 057° to TIGAH and hold.</p>
---	--

AWOS-3PT 120.0	HCF CENTER 118.45 278.3	CTAF 122.9
-------------------	----------------------------	---------------



VGSI and descent angles not coincident (VGSI Angle 2.50/TCH 43).			
CORGA	KONEA	5000	UCEP
		↑	✧
			tr 057°
			TIGAH △
<p>4300 — 055° — 4300</p> <p>1.5 NM to KUKUI</p> <p>3.00° TCH 45</p> <p>7.3 NM 3 NM 1.5 0.5</p>			
CATEGORY	A	B	C
LNAV MDA	3220-1	549 (600-1)	3220-1½
CIRCLING	3520-1¼	849 (900-1¼)	3880-3



PAC, 07 OCT 2021 to 02 DEC 2021

PAC, 07 OCT 2021 to 02 DEC 2021

