

Flight Procedures Cover Page	Task Action: P-NOTAM	Task Type: IAP	Estimated Chart Date: 09/08/2022	APWS Task ID: BE9A92E69B5547C28C70D39F53E96805	APWS Project ID: 05BC78E5C0064B43B904F93D3A1ED204
Procedure: RNAV (GPS) RWY 16 AMDT 1C		Enroute: NO	Specialist: Boone-walt, Rose		Agreement Number:
Airport ID: KJZP			Airport City: JASPER		State: GA
Facility ID:	Facility Type:	Flight Inspection Remark Type:			
<div>Procedure Comments:</div> <div>CIRCLING RADII INCREASE</div> <div>CONTACT: JASON KRETSCHMER AJV-A421 LEAD: 405.954.4019</div> <div><div>Digitally signed by JASON KRETSCHMER Jul 08, 2022</div><div>QUALITY 9 CHECKED</div><div>QUALITY 40 CHECKED</div></div>					

INFORMATION ONLY

JASPER, GEORGIA

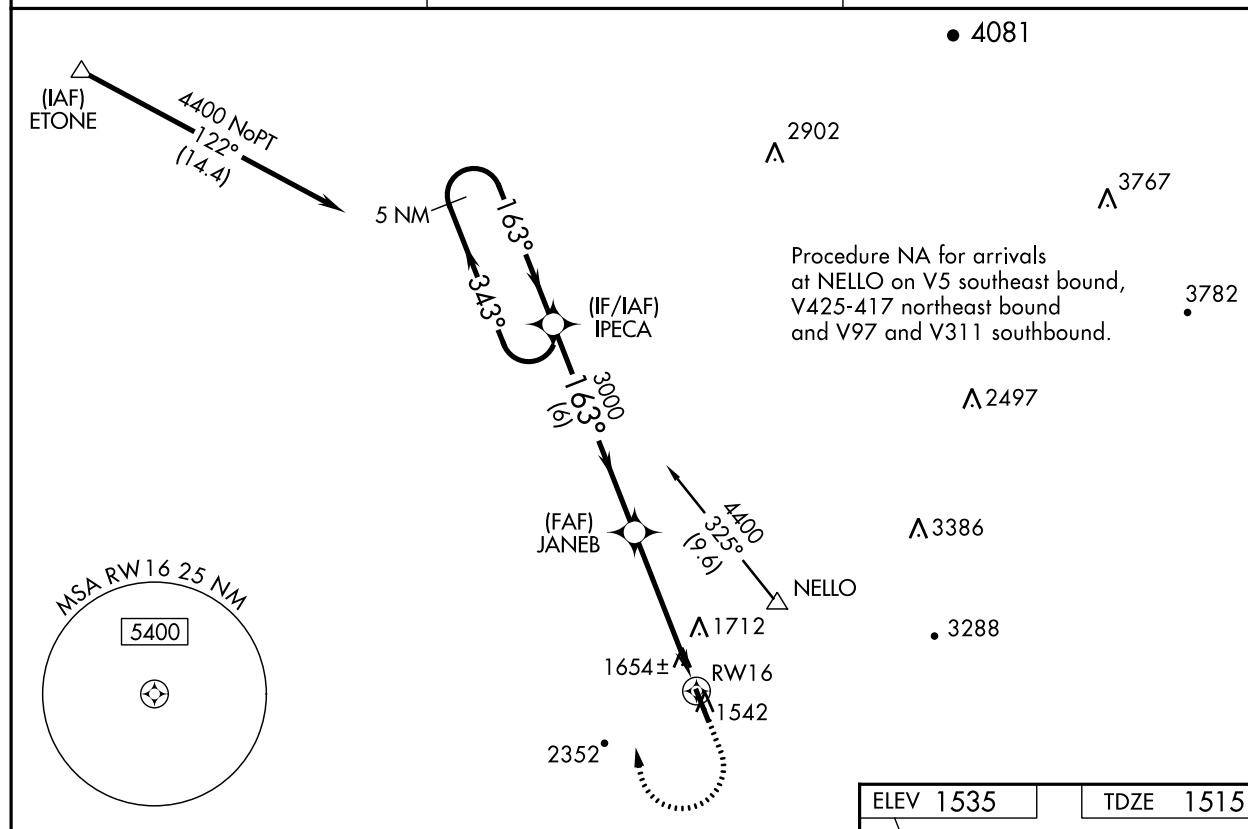
AL 6710 (FAA)

19115

WAAS CH 82005 W16A	APP CRS 163°	Rwy Idg 5000
		TDZE 1515
		Apt Elev 1535

RNAV (GPS) RWY 16 PICKENS COUNTY (JZP)

<div><div><div><div></div><div></div><div></div></div><div><div></div><div></div><div></div></div></div><div>NA</div></div> <div>Baro-VNAV NA when using Canton altimeter setting. For uncompensated Baro-VNAV systems, LNAV/VNAV NA below -18°C (0°F) or above 54°C (130°F). DME/DME RNP-0.3 NA. Helicopter visibility reduction below ¾ SM NA. When local altimeter setting not received, use Canton altimeter setting and increase LPV DA to 1976 LNAV/VNAV DA to 1889 and all MDA 80 feet, increase LPV all Cats visibility to 1½, LNAV/VNAV all Cats visibility to 1¾, LNAV Cat C visibility to 1½ and Circling Cat C visibility to 2¾.</div> <div>MISSED APPROACH: Climb to 3000 then climbing right turn to 4400 direct IPECA and hold.</div>		
AWOS-3PT 118.55	ATLANTA CENTER 133.1 342.425	UNICOM 122.725 (CTAF)



VGSI and RNAV glidepath not coincident (VGSI Angle 3.00/TCH 30).		3000	4400	IPECA
5 NM Holding Pattern				
IPECA				
JANEB				
RW16				
GP 3.00° TCH 40				
6 NM				
4.6 NM				
CATEGORY	A	B	C	D
LPV DA	1925-1 $\frac{3}{8}$ 410 (400-1 $\frac{3}{8}$)			NA
LNAV/VNAV DA	1838-1 $\frac{1}{8}$ 323 (400-1 $\frac{1}{8}$)			NA
LNAV MDA	1980-1	465 (500-1)	1980-1 $\frac{3}{8}$ 465 (500-1 $\frac{3}{8}$)	NA
CIRCLING	1980-1 445 (500-1)	2160-1 625 (700-1)	2360-2 $\frac{1}{2}$ 825 (900-2 $\frac{1}{2}$)	NA

JASPER, GEORGIA
Amdt 1B 31MAR16

34°27'N-84°27'W

PICKENS COUNTY (JZP) RNAV (GPS) RWY 16

SE-4, 19 MAY 2022 to 16 JUN 2022

