

Flight Procedures Cover Page	Task Action: FLIGHT CHECK	Task Type: IAP	Estimated Chart Date: 11/03/2022	APWS Task ID: BE5827E6B8434DFB9CC02CCACD77FF23	APWS Project ID: 8836291085654DA8BE4B4772A5025F06
Procedure: RNAV (GPS) RWY 17 AMDT 1		Enroute: NO	Specialist: Hanby, William		Agreement Number:
Airport ID: KGCK			Airport City: GARDEN CITY		State: KS
Facility ID:	Facility Type:	Flight Inspection Remark Type: New FC Slot			
<p>Procedure Comments: AIRPORT PENDING DATA USED.</p> <p>CHANGED AIRPORT MAGVAR FROM 9E TO 5E - MAGVAR ROTATION FROM E9/EPOCH YEAR 1985 TO E5/EPOCH YEAR 2025.</p> <p>PER CFPT, GCK VORTAC MAGVAR NOT ROTATED.</p> <p>LOWERED LPV DA/HAT FROM 3139/250 TO 3089/200.</p> <p>LOWERED LNAV/VNAV DA/HAT FROM 3217/328 TO 3139/250 - FINAL OCS IS CLEAR (250 FT HAT).</p> <p>LOWERED LNAV MDA/HAT FROM 3220/331 TO 3200/311 – FINAL STEP-DOWN FIX ADDED TO RETAIN/LOWER MINIMA.</p> <p>MOVED VDP FROM 0.92 NM TO RW17 TO 0.85 NM TO RW17.</p> <p>CONTACT MARK ADAMS: (405) 954-9946</p>					

GARDEN CITY, KANSAS

AL-491 (FAA)

FIG

WAAS CH 42803 W17A	APP CRS 175°	Rwy Idg 7299 TDZE 2889 Apt Elev 2891
--	------------------------	---

RNAV (GPS) RWY 17

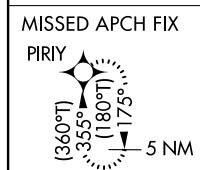
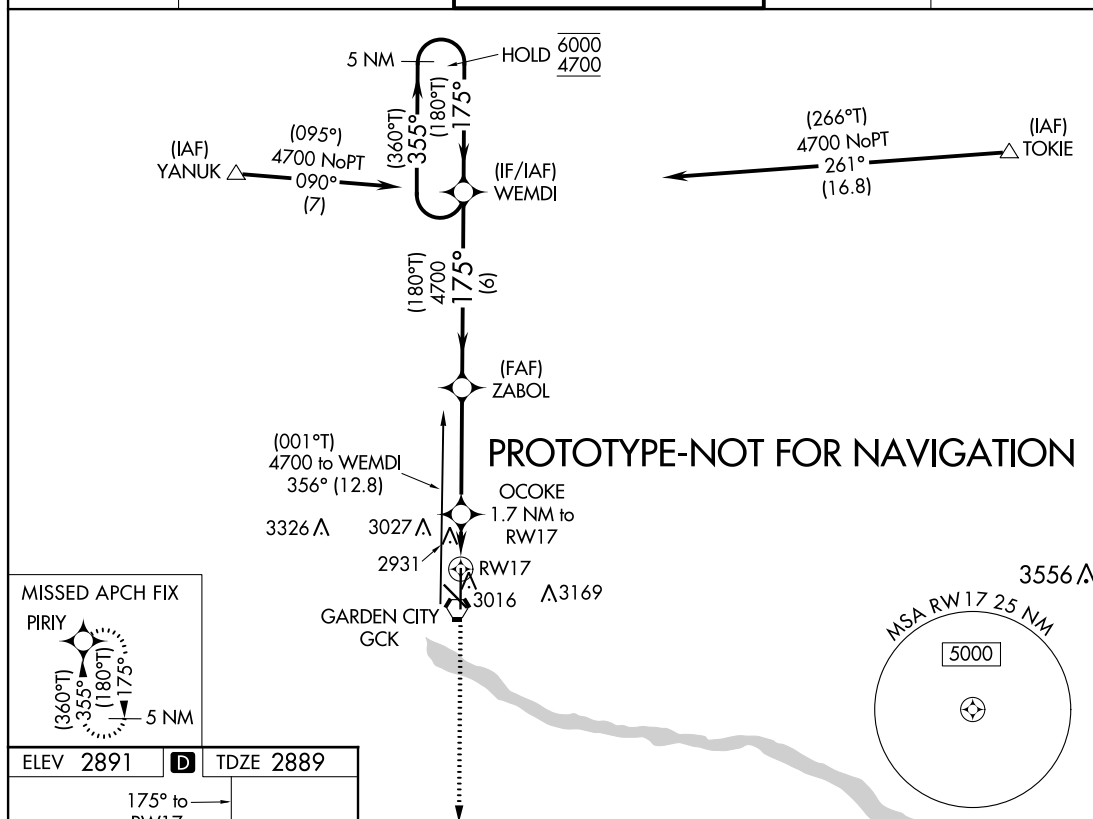
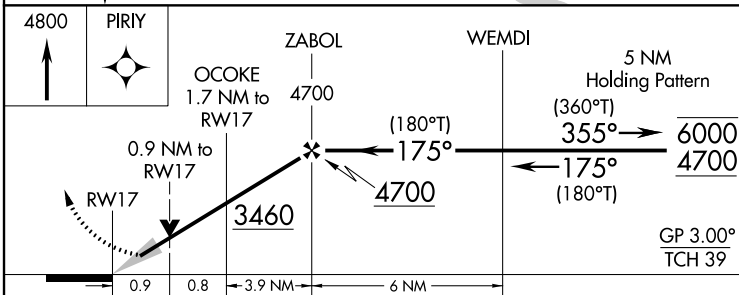
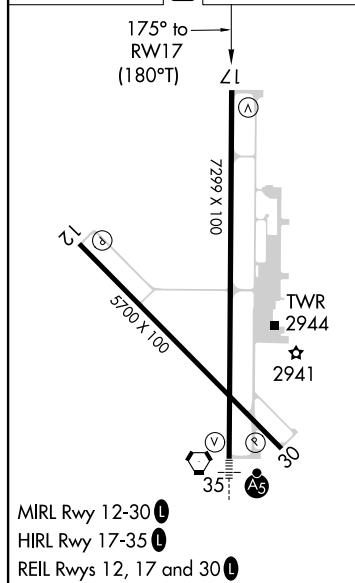
GARDEN CITY RGNL (GCK)

RNP APCH - GPS.

▼ For uncompensated Baro-VNAV systems, LNAV/VNAV
▲ NA below -20°C or above 54°C.

MISSED APPROACH: Climb to 4800 direct PIRIY and hold.

ASOS 121.325	KANSAS CITY CENTER 125.2 269.4	GARDEN CITY TOWER* 118.15 (CTAF) 254.4	GND CON 119.0 254.4	UNICOM 122.95
------------------------	--	--	-------------------------------	-------------------------

ELEV 2891 **D** TDZE 2889

CATEGORY	A	B	C	D
LPV DA	3089-3/4	200 (200-3/4)		
LNAV/VNAV DA	3139-3/4	250 (300-3/4)		
LNAV MDA	3200-1	311 (400-1)	3200-7/8	311 (400-7/8)
C CIRCLING	3320-1 429 (500-1)	3360-1 469 (500-1)	3480-1 1/2 589 (600-1 1/2)	3480-2 589 (600-2)

GARDEN CITY, KANSAS

Amdt 1 FIG

37°56'N-100°43'W

GARDEN CITY RGNL (GCK)

RNAV (GPS) RWY 17

AUTOMATED AL-491 RNAV (GPS) RWY 17

NC-2

8-8-22

COMPILER: HD

REVIEWER:

DBL CHKR:

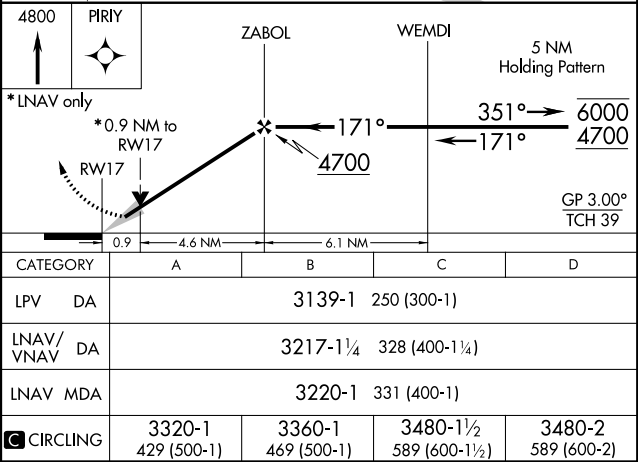
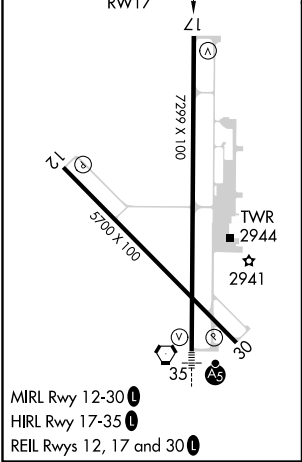
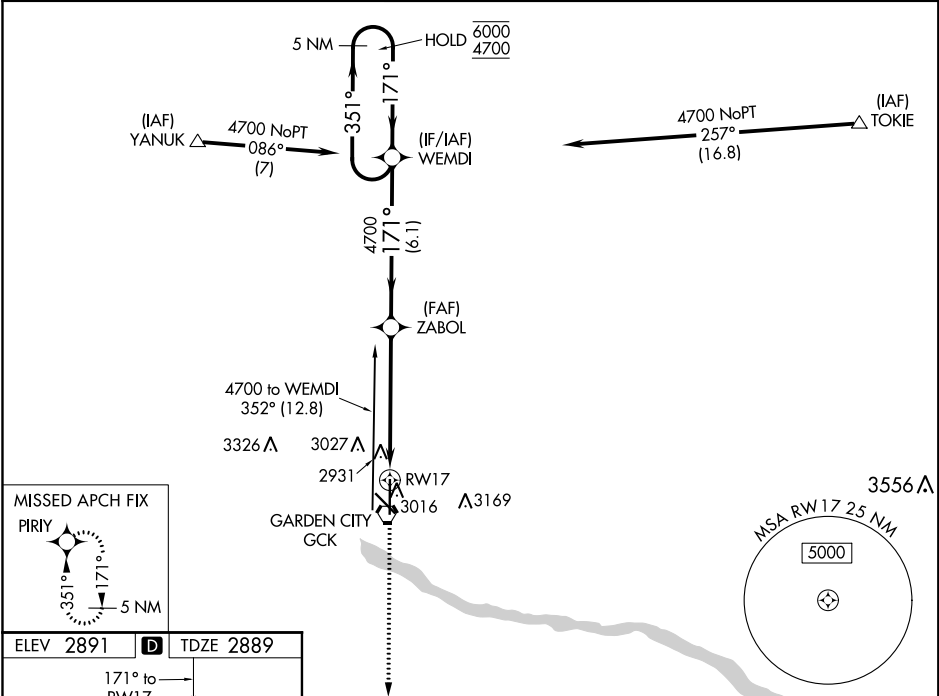
EFF DATE: FIG

WAAS CH 42803 W17A	APP CRS 171°	Rwy Idg 7299 TDZE 2889 Apt Elev 2891
--	------------------------	---

RNAV (GPS) RWY 17

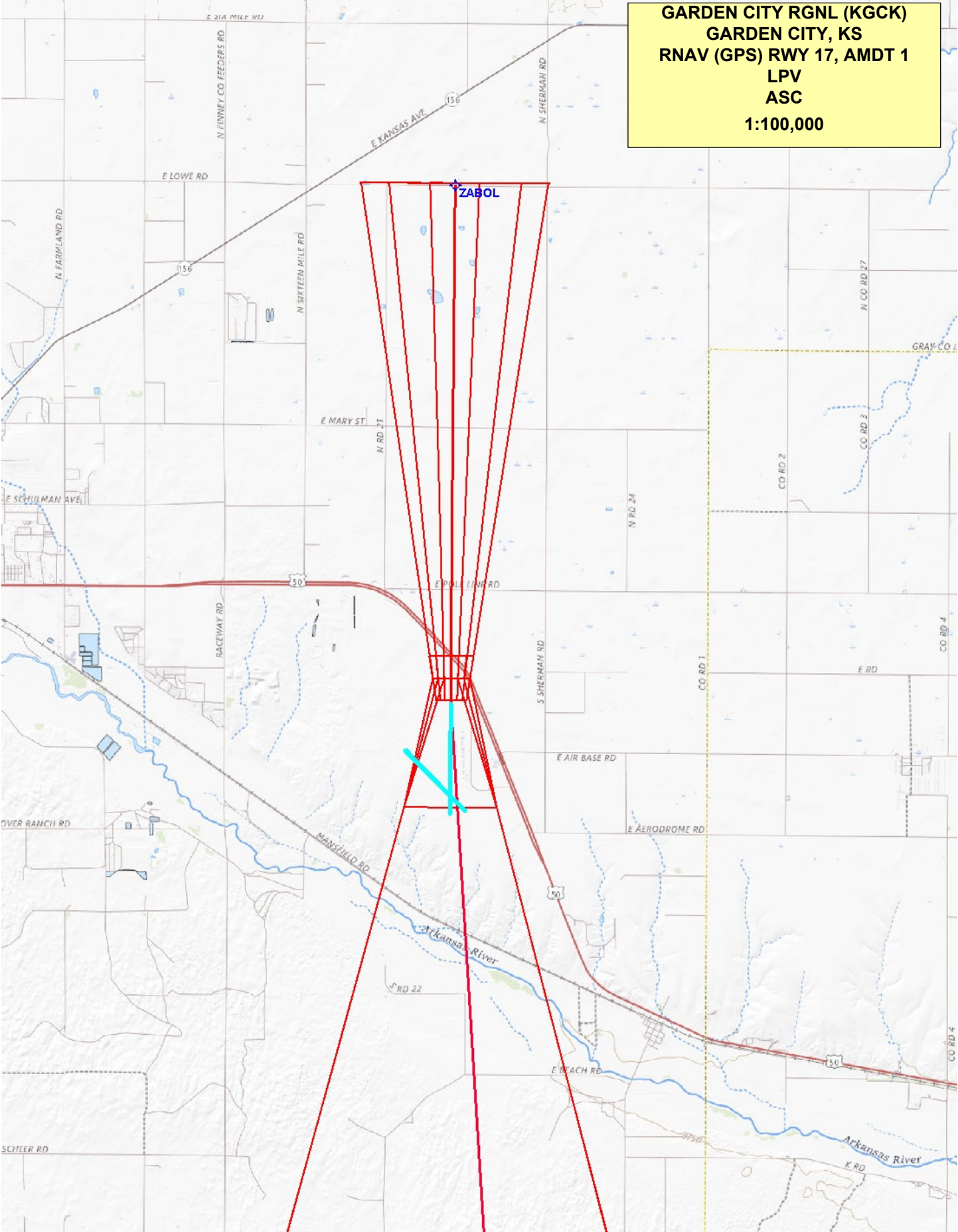
GARDEN CITY RGNL (GCK)

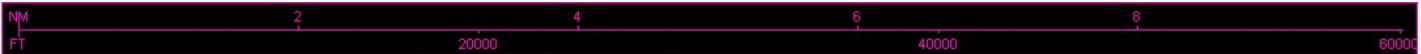
RNP APCH.		MISSED APPROACH: Climb to 4800 direct PIRY and hold.		
For uncompensated Baro-VNAV systems, LNAV/VNAV NA below -20°C or above 43°C.				
ASOS 121.325	KANSAS CITY CENTER 125.2 269.4	GARDEN CITY TOWER* 118.15 (CTAF) 0 254.4	GND CON 119.0 254.4	UNICOM 122.95





GARDEN CITY RGNL (KGCK)
GARDEN CITY, KS
RNAV (GPS) RWY 17, AMDT 1
LPV
ASC
1:100,000





GARDEN CITY RGNL (KGCK)
GARDEN CITY, KS
RNAV (GPS) RWY 17, AMDT 1
LNAV/VNAV
ASC
1:100,000

