




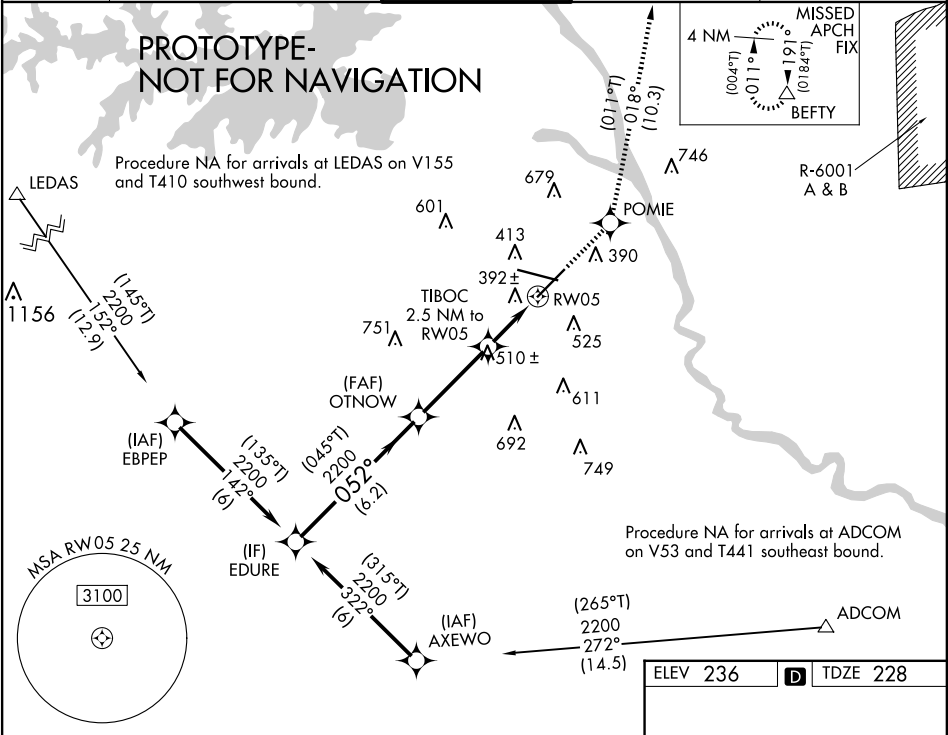
Flight Procedures Cover Page	Task Action: FLIGHT CHECK	Task Type: IAP	Estimated Chart Date: 02/20/2025	APWS Task ID: BE0BCDA6A10840B1A437EAB7219D43CE	APWS Project ID: 14744F903ADB4F08A357C0BCEB9A4AB4
Procedure: RNAV (GPS) RWY 5 AMDT 3		Enroute: NO	Specialist: Young, Silvia		Agreement Number:
Airport ID: KCAE			Airport City: COLUMBIA		State: SC
Facility ID:	Facility Type:	Flight Inspection Remark Type: New FC Slot			
<div>Procedure Comments:</div> <div>PENDING AIRNAV DATA UTILIZED FOR KCAE AND RWYS.</div> <div>CONTACT: CASIMIR TABAKA, (405)954-7931.</div> <div><div>QUALITY 9 CHECKED BEGUE</div><div>QUALITY 10 CHECKED</div></div>					

FIPC BASIC FORM										
PROCEDURE: RNAV (GPS) RWY 5 AMDT 3				AIRPORT NAME: COLUMBIA METRO			AIRPORT ID: KCAE		SPECIAL CONTROL NO: AG-11-018-24	
FAC ID: KCAE05.03			CITY: COLUMBIA				ST: SC		ORIG CHART DATE: 02/20/2025	
DFL TYPE: PROC/S		THIRD PARTY: <input type="checkbox"/> YES		EST. TIME ON SITE: 0.4		REIMB. NUMBER:		PTS TASK ID: BE0BCDA6A10840B1A437EAB7219D43CE		
PREFLIGHT NOTES										
REVIEWER:							DATE:			
COMMENTS:							CHECK ONE:			
							<input type="checkbox"/> FLT CK REQ <input type="checkbox"/> NFCR <input type="checkbox"/> REJECT			
									YES	NO
							CPV COMPLETE?		X	
PROCEDURE RESULTS										
INSPECTION DATE: 02/08/2025		CREW #: VN426		N #: N77		INSTRUMENT PROCEDURE STATUS: <input checked="" type="checkbox"/> SAT <input type="checkbox"/> SAT W/CHANGES <input type="checkbox"/> UNSAT			ARINC CODING: <input checked="" type="checkbox"/> SAT <input type="checkbox"/> SAT/GOLD <input type="checkbox"/> UNSAT	
FLIGHT INSPECTOR SIGNATURE: robert e williams @ 02/08/2025 19:50				PRINTED NAME: WILLIAMS, ROBERT EMIL					NOTAM INITIATED? <input type="checkbox"/> YES <input checked="" type="checkbox"/> NO	
FLIGHT INSPECTOR REMARKS: Columbia Metro, Columbia, SC, RNAV (GPS) RWY 05, AMDT 3. SAT										
IN-FLIGHT OBSTACLE REPORT										
OBSTRUCTION ID #:		COORDINATES OR LOCATION:		GNSS ALTITUDE (MSL):		BAROMETRIC ALTITUDE (MSL):		HEIGHT ABOVE GROUND LEVEL:		

WAAS CH 45526 W05A	APP CRS 052°	Rwy Idg TDZE Apt Elev	7001 228 236
--	------------------------	-----------------------------	---

RNAV (GPS) RWY 5
COLUMBIA METRO (CAE)

RNP APCH - GPS.					<div>MALSR</div> <div></div>	MISSED APPROACH: Climb to 2400 direct POMIE and on track 018° to BEFTY and hold.	
<div></div>	For uncompensated Baro-VNAV systems, LNAV/VNAV NA below -5°C or above 54°C. For inop ALS, increase LNAV/VNAV all Cats visibility to RVR 6000 and LNAV Cats C and D visibility to 1 3/8 SM.						
<div></div>	*RVR 1800 authorized with use of FD or AP or HUD to DA.						
ATIS 120.15	COLUMBIA APP CON 133.4 285.6 (290°-109°) 124.15 338.2 (110°-289°)			COLUMBIA TOWER 119.5 257.8	GND CON 121.9 348.6	CLNC DEL 119.75	



VGSI and RNAV glidepath not coincident (VGSI Angle 3.00/TCH 73).				2400 POMIE	BEFTY
EDURE 2200 052° 2200				OTNOW 2200 052° 2200	tr 018°
GP 3.00° TCH 60				TIBOC 2.5 NM to RW05	
6.2 NM				1.3 NM to RW05	
3.5 NM				1.2 NM	
1.3 NM					
CATEGORY	A	B	C	D	
LPV DA*		428/24	200 (200-1/2)		
LNAV/VNAV DA		638/40	410 (500-3/4)		
LNAV MDA	700/24	472 (500-1/2)	700/50	472 (500-1)	
CIRCLING	740-1 504 (600-1)	860-1 624 (700-1)	1040-2 1/4 804 (900-2 1/4)	1040-2 1/2 804 (900-2 1/2)	

REIL Rwy 23
TDZ/CL Rwy 11
HIRL Rws 5-23 and 11-29

OLD

COLUMBIA, SOUTH CAROLINA


AL-89 (FAA)

23278

WAAS CH 45526 W05A	APP CRS 052°	Rwy Idg TDZE Apt Elev	7001 228 236
--	------------------------	-----------------------------	---

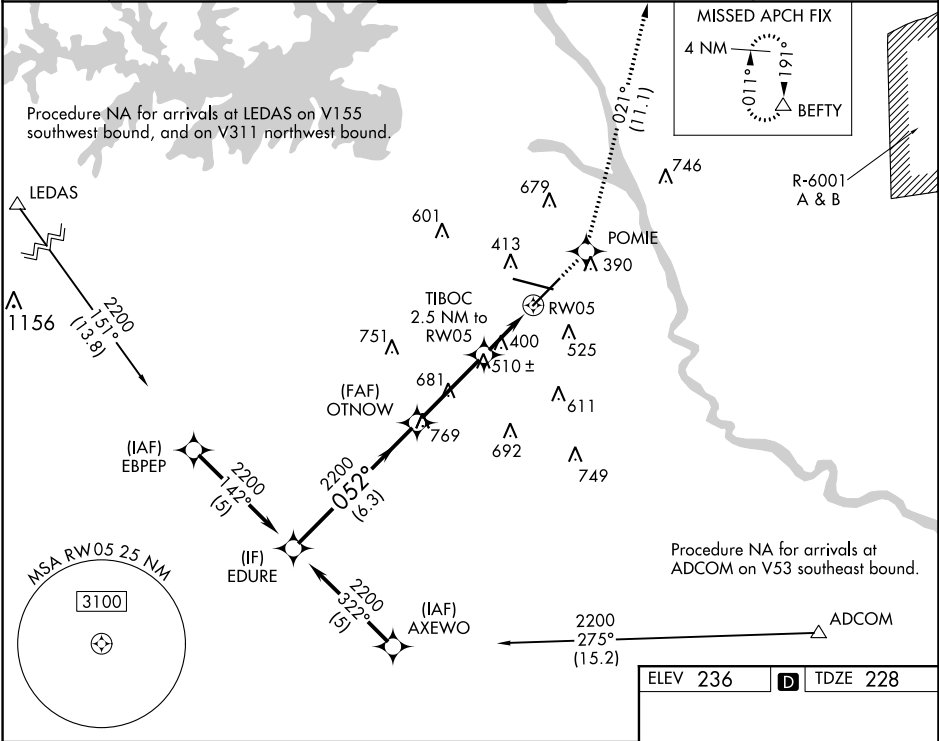
RNAV (GPS) RWY 5
COLUMBIA METRO (CAE)

▽ For uncompensated Baro-VNAV systems, LNAV/VNAV NA below -15°C (5°F) or above 48°C (118°F). DME/DME RNP-0.3 NA.
▲ **RVR 1800 authorized with use of FD or AP or HUD to DA.

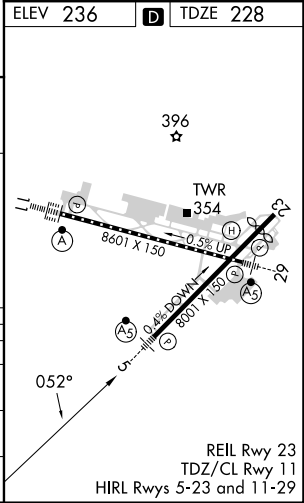
MALSR


MISSED APPROACH: Climb to 2400 direct POMIE and on track 021° to BEFTY and hold.

ATIS 120.15	COLUMBIA APP CON 133.4 285.6 (290°-109°) 124.15 338.2 (110°-289°)	COLUMBIA TOWER 119.5 257.8	GND CON 121.9 348.6	CLNC DEL 119.75
-----------------------	---	--------------------------------------	-------------------------------	---------------------------



VGSI and RNAV glidepath not coincident (VGSI Angle 3.00/TCH 73).		2400	POMIE	tr 021°	BEFTY
EDURE		OTNOW	TIBOC 2.5 NM to RW05	*LNAV only.	
2200 — 052°		2200	*1.3 NM to RW05	RW05	
GP 3.00° TCH 60		*1080			
6.3 NM		3.4 NM	1.2 NM	1.3 NM	
CATEGORY	A	B	C	D	
LPV DA **	428/24 200 (200-½)				
LNAV/VNAV DA	638/50 410 (500-1)				
LNAV MDA	700/24	472 (500-½)	700/40	700/50	
			472 (500-¾)	472 (500-1)	
CIRCLING	740-1	860-1	1040-2¼	1040-2½	
	504 (600-1)	624 (700-1)	804 (900-2¼)	804 (900-2½)	



COLUMBIA, SOUTH CAROLINA
Amdt 2D 30DEC21

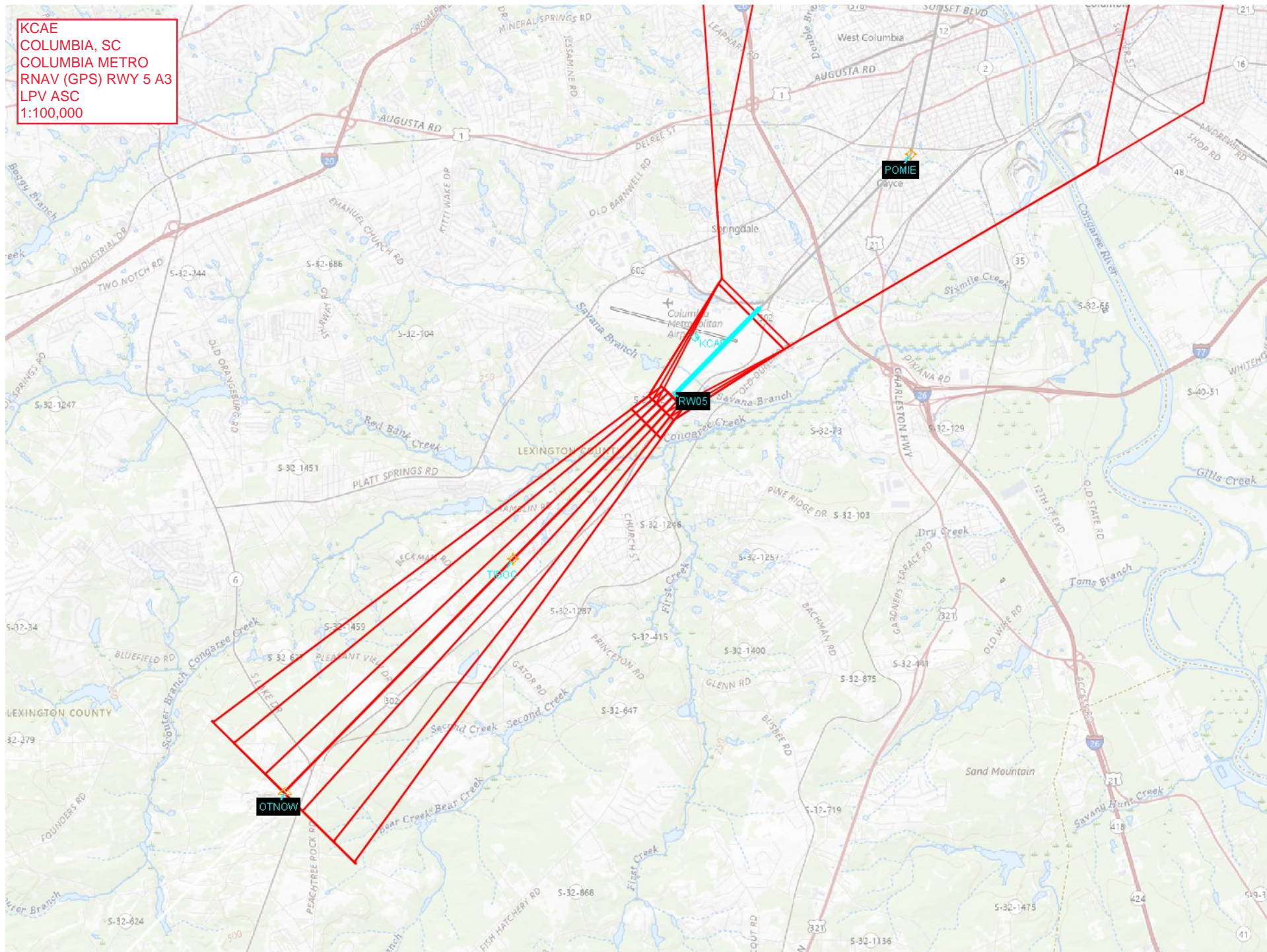
33°56'N-81°07'W

COLUMBIA METRO (CAE)
RNAV (GPS) RWY 5

SE-2, 11 JUL 2024 to 08 AUG 2024

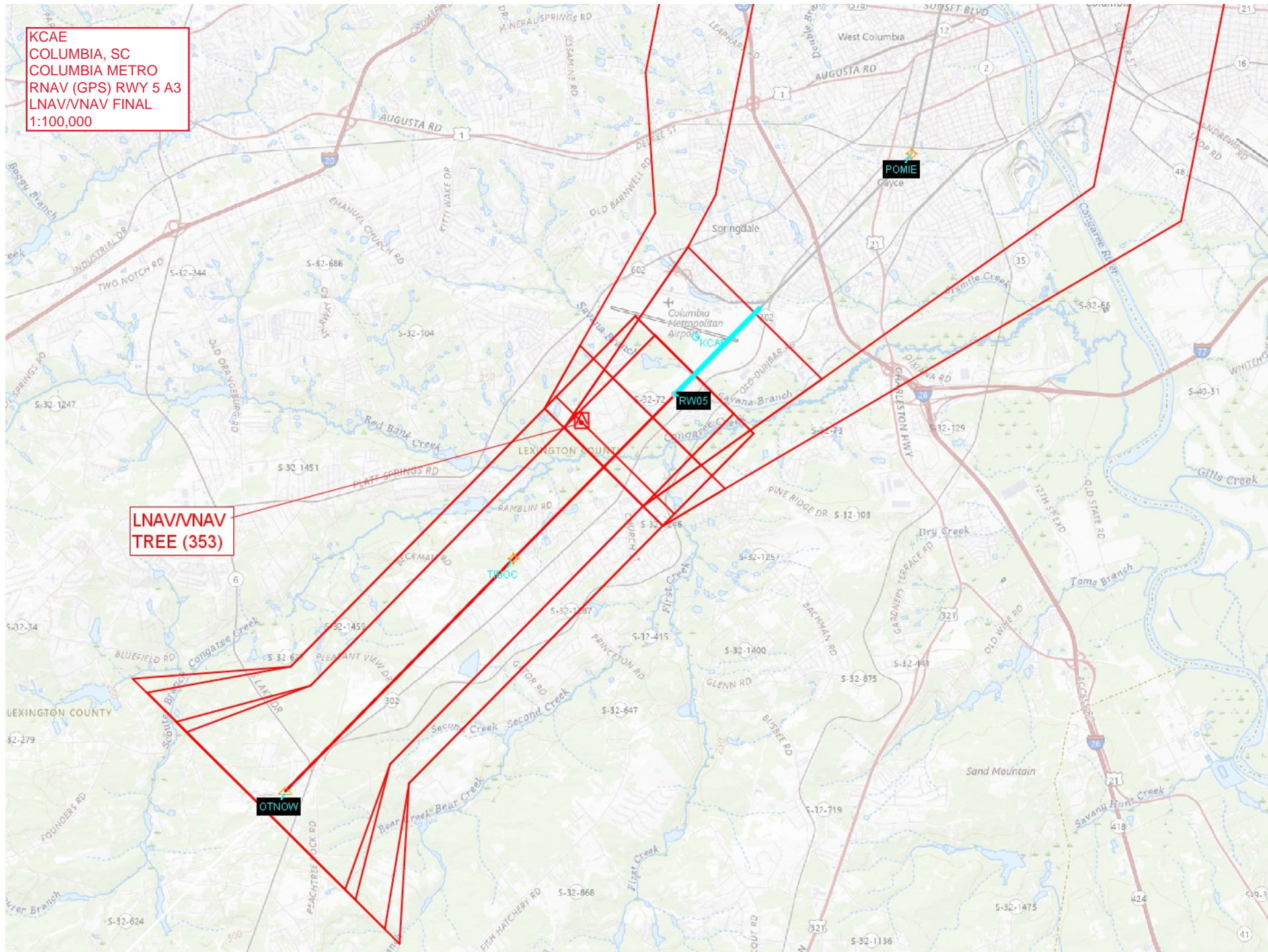
SE-2, 11 JUL 2024 to 08 AUG 2024

KCAE
COLUMBIA, SC
COLUMBIA METRO
RNAV (GPS) RWY 5 A3
LPV ASC
1:100,000



KCAE
COLUMBIA, SC
COLUMBIA METRO
RNAV (GPS) RWY 5 A3
LNAV/VNAV FINAL
1:100,000

LNAV/VNAV
TREE (353)



KCAE
COLUMBIA, SC
COLUMBIA METRO
RNAV (GPS) RWY 5 A3
LNAV FINAL & CIRCLING
1:100,000

Circling CAT C/D
TOWER (679) 45-000971

Circling CAT A
TREE (429) 45-023444

LNAV TIBOC to KCAE:RW05:AER
TREE (392)

Circling CAT B
TOWER (545) 45-001935

LNAV OTNOW to TIBOC
TOWER (769) 45-001934

LNAV OTNOW to TIBOC
TOWER (769) 45-001934

KCAE
COLUMBIA, SC
COLUMBIA METRO
RNAV (GPS) RWY 5 A3
FEEDERS, IAFS, IF, LNAV FINAL, MA & HOLDING
1:500,000

CTC COLUMBIA APP WITHIN
20 NM ON 123.4 205.6

CTC SHAW APP WITHIN
20 NM ON 125.4 318.1

BEFTY Holding
Missed Level Surface
TOWER (1325) 45-000649

LNAV TIBOC to KCAE:RW05:AER
TREE (392)

LNAV OTNOW to TIBOC
TOWER (769) 45-001934

Feeder LEDAS to EBPEP
TOWER (1062) 45-000750

Initial EBPEP to EDURE
TOWER (811) 45-001148

Intermediate EDURE to OTNOW
TOWER (803) 45-021318

Initial AXEWO to EDURE
TOWER (801) 45-000995

Feeder ADCOM to AXEWO
TOWER (740) 45-002474

CTC COLUMBIA APP WITHIN
20 NM ON 124.15 338.2