

Flight Procedures Cover Page	Task Action: FLIGHT CHECK	Task Type: IAP	Estimated Chart Date: 08/12/2021	APWS Task ID: BDA4F353F2C04BCD82A52BFC1D83C617	APWS Project ID: 84FF7CC3D59B4D30840EF94399811956
Procedure: RNAV (GPS) RWY 7 AMDT 0B		Enroute: NO	Specialist: Nesbitt, Cole		Agreement Number:
Airport ID: KMTH			Airport City: MARATHON		State: FL
Facility ID:	Facility Type:	Flight Inspection Remark Type: New FC Slot			
<p>Procedure Comments: ABBREVIATED AMENDMENT COMPLETED USING ACTIVE AND PENDING DATA.</p> <p>NEGATIVE "W" SYMBOL REMOVED – WAAS COVERAGE SUFFICIENT PER WAAS WEBSITE.</p> <p>CRC REMAINDER CHANGE.</p> <p>NEW CIRCLING AREA AND CONTROLLERS.</p>					

J ZEDER 01/11/2021

QUALITY
16
CHECKED

QUALITY
41
CHECKED

[illegible]

MARATHON, FLORIDA

AL-6394 (FAA)

FIG

WAAS CH 99605 W07A	APP CRS 071°	Rwy Idg TDZE Apt Elev	5008 5 5
--	------------------------	-----------------------------	-------------------------------------

RNAV (GPS) RWY 7

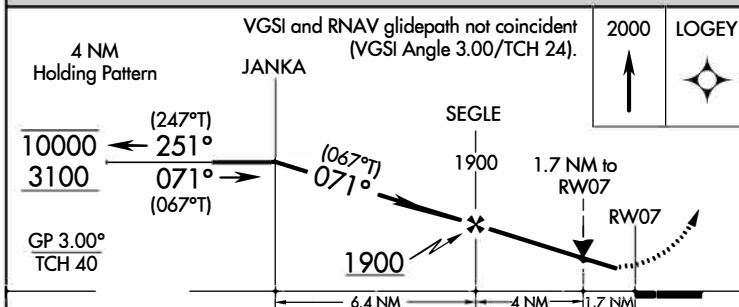
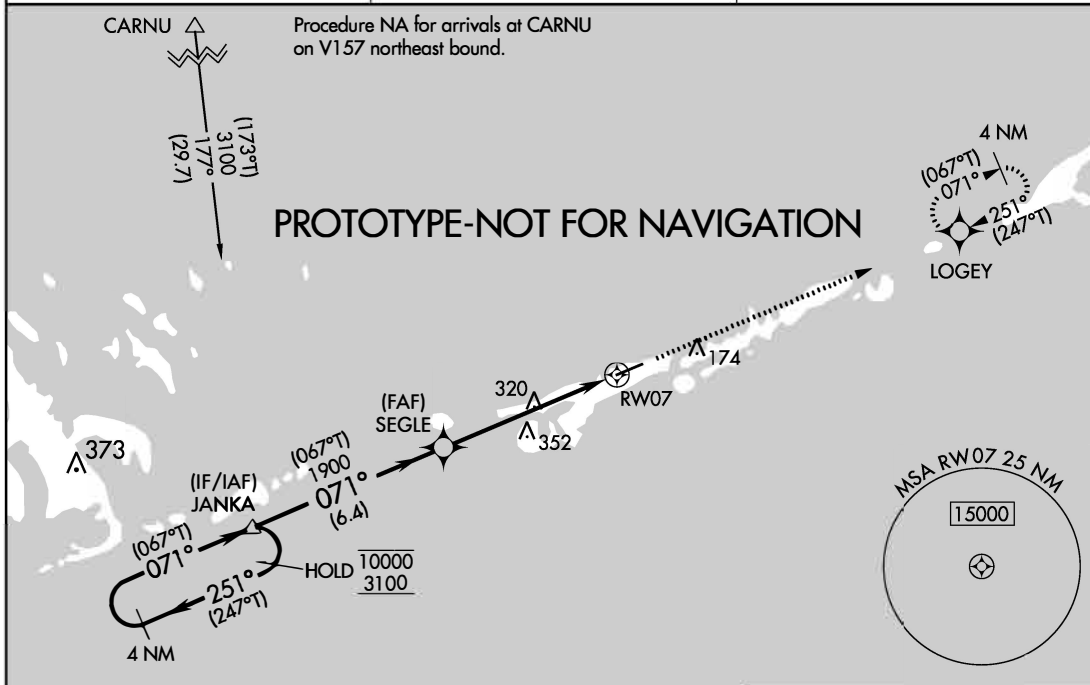
THE FLORIDA KEYS MARATHON INTL (MTH)

RNP APCH -GPS.

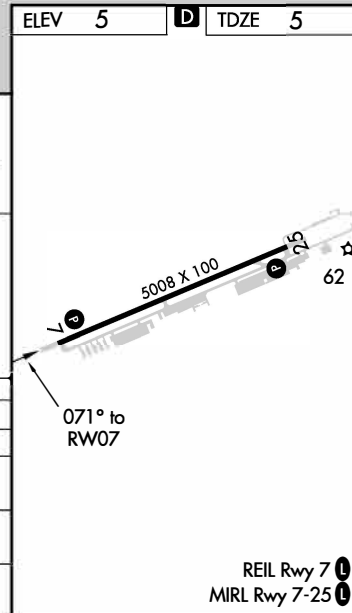
▼ Baro-VNAV and VDP NA when using Key West Intl altimeter setting. Rwy 7 helicopter visibility reduction below ¼ SM NA. For uncompensated Baro-VNAV systems, LNAV/VNAV NA below -15°C or above 54°C. When local altimeter setting not received, use Key West Intl altimeter setting: increase LPV DA to 482 feet, LNAV/VNAV DA to 534 feet, increase LPV and LNAV/VNAV all Cats visibility ¼ SM, increase all MDAs 100 feet and LNAV Cat C/D and Circling Cat C visibility ¼ SM and Circling Cat D ½ SM.

MISSED APPROACH:
Climb to 2000 direct
LOGEY and hold.

ASOS 135.525	MIAMI CENTER 133.5 306.9	UNICOM 122.975 (CTAF) 0
------------------------	------------------------------------	-----------------------------------



CATEGORY	A	B	C	D
LPV DA		389-1 1/8	384 (400-1 1/8)	
LNAV/VNAV DA		441-1 1/4	436 (500-1 1/4)	
LNAV MDA	600-1 595 (600-1)		600-1 3/4 595 (600-1 3/4)	
CIRCLING	600-1 595 (600-1)		620-1 3/4 615 (600-1 3/4)	660-2 655 (700-2)



MARATHON, FLORIDA
Orig-B FIG

24°44'N-81°03'W

THE FLORIDA KEYS MARATHON INTL (MTH)
RNAV (GPS) RWY 7

AUTOMATED AL-6394 RNAV (GPS) RWY 7

SE-3
11/25/2020
COMPILER: SQ
REVIEWER:
DBL CHK:
EFF DATE: FIG

OLD

WAAS CH 99605 W07A	APP CRS 071°	Rwy Idg TDZE Apt Elev	5008 5 5
--	------------------------	-----------------------------	-------------------------------------

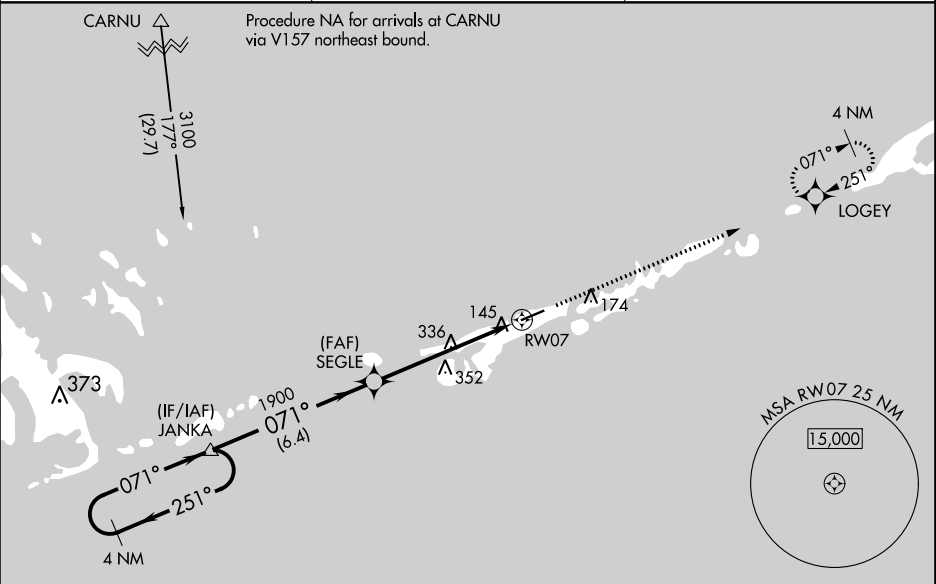
RNAV (GPS) RWY 7
THE FLORIDA KEYS MARATHON INTL (MTH)

⚠ Baro-VNAV NA when using Key West Intl altimeter setting. For uncompensated Baro-VNAV systems, LNAV/VNAV NA below -15°C (5°F) or above 49°C (120°F). DME/DME RNP-0.3 NA.

⚠ Helicopter visibility reduction below ¾ SM NA. When local altimeter setting not received, use Key West Intl altimeter setting and increase all DAs 93 feet, increase all MDAs 100 feet, increase LPV and LNAV/VNAV all Cats visibility ½ mile, LNAV Cats C and D visibility ½ mile, and Circling Cat C visibility ½ mile, Circling Cat D visibility ¼ mile.

MISSED APPROACH:
Climb to 2000 direct LOGEY and hold.

ASOS 135.525	MIAMI CENTER 133.5 306.9	UNICOM 122.975 (CTAF) 0
------------------------	------------------------------------	-----------------------------------



4 NM Holding Pattern

VGSI and RNAV glidepath not coincident (VGSI Angle 3.00/TCH 24).

JANKA

SEGLE

RW07

2000

LOGEY

3100

251°

071°

071°

1900

GP 3.00° TCH 40

6.4 NM

5.7 NM

CATEGORY	A	B	C	D
LPV DA		389-1¼	384 (400-1¼)	
LNAV/VNAV DA		441-1½	436 (500-1½)	
LNAV MDA	600-1	595 (600-1)	600-1½ 595 (600-1½)	600-1¾ 595 (600-1¾)
CIRCLING	600-1	595 (600-1)	600-1½ 595 (600-1½)	600-2 595 (600-2)

5008 X 100

62

071° to RW07

REIL Rwy 7 0

MIRL Rwy 7-25 0

SE-3, 18 JUN 2020 to 16 JUL 2020

SE-3, 18 JUN 2020 to 16 JUL 2020

