

Flight Procedures Cover Page	Task Action: P-NOTAM	Task Type: IAP	Estimated Chart Date: 04/21/2022	APWS Task ID: BD995E56F87F4B7D9A6A484098BE181D	APWS Project ID: F108B0FEF541462EB8E10241A3B26595
Procedure: RNAV (GPS) RWY 36 AMDT 0D		Enroute: NO	Specialist: Combs, Patrick		Agreement Number:
Airport ID: KRZL			Airport City: RENSSELAER		State: IN
Facility ID:	Facility Type:	Flight Inspection Remark Type:			
<div>Procedure Comments: P-NOTAM</div> <div>Order 8260.3, Chapter 2, New Circling Criteria Applied.</div> <div>Contact Jason Kretschmer, AJV-A421, 405-954-4019</div> <div><div>Digitally signed by <b>JASON KRETSCHMER</b> Feb 09, 2022</div><div><div>QUALITY 9 CHECKED</div><div>QUALITY 47 CHECKED</div></div></div>					

WAAS CH <b>82327</b> <b>W36A</b>	APP CRS <b>002°</b>	Rwy Idg TDZE <b>681</b> Apt Elev <b>698</b>
--	------------------------	---

CURRENT

RNAV (GPS) RWY 36

JASPER COUNTY (RZL)

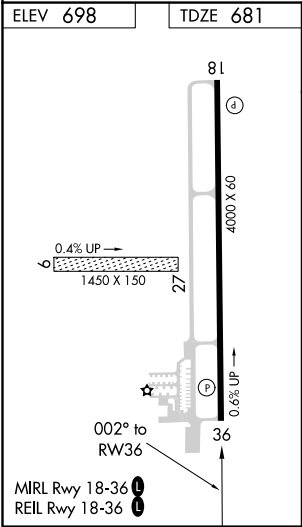
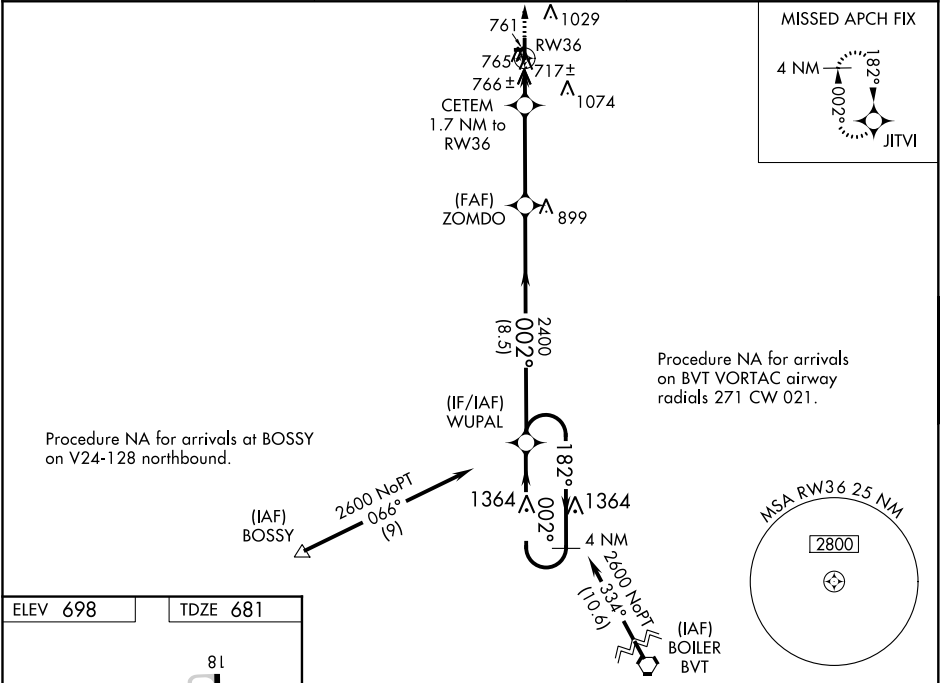
RNP APCH.

⚠

Baro-VNAV NA when using Knox altimeter setting. For uncompensated Baro-VNAV systems, LNAV/VNAV NA below -22°C or above 54°C. When local altimeter setting not received use Knox altimeter setting and increase all DA 78 feet and all MDA 80 feet, increase LPV and LNAV/VNAV all Cats visibility ⅓ mile and LNAV and Circling Cat C visibility ¼ mile. Rwy 36 helicopter visibility reduction below 1 SM NA. Circling NA to Rwys 9 and 27.

MISSED APPROACH:  
Climb to 2600 direct  
JITVI and hold.

AWOS-3P <b>119.175</b>	CHICAGO CENTER <b>132.5 284.7</b>	UNICOM <b>122.8 (CTAF) 0</b>
---------------------------	--------------------------------------	---------------------------------



2600 JITVI		WUPAL 4 NM Holding Pattern		
* LNAV only.		ZOMDO 2400		
CETEM 1.7 NM to RW36		182° 002° 2600		
RW36 1.7 NM		GP 3.00° TCH 40		
3.6 NM		8.5 NM		
A		B	C	D
LPV DA	931-1 250 (300-1)			NA
LNAV/ VNAV DA	947-1 266 (300-1)			NA
LNAV MDA	1020-1 339 (400-1)			NA
CIRCLING	1120-1 422 (500-1)	1340-1 642 (700-1)	1340-1¾ 642 (700-1¾)	NA



AIRPORT ID	KRZL
AIRPORT NAME	JASPER COUNTY
CITY	RENSSELAER,
STATE	IN
Proc ID:	RNAV (GPS) RWY 36
Amdt #	ORIG-D
Scale	1:100,000

NEW RADII	
CAT A	1.30
CAT B	1.83
CAT C	2.88
CAT D	N/A

CIRCLING CAT A: 815  
TREE (18-031690)

CIRCLING CAT B: 1029  
TOWER (18-000474)

CIRCLING CAT C: 1074  
TOWER (18-000282)

