

Flight Procedures Cover Page	Task Action: FLIGHT CHECK	Task Type: IAP	Estimated Chart Date: 06/17/2021	APWS Task ID: BCE7B88FD8C94FC594179F3181C1D55F	APWS Project ID: C9B4F0DB9858489391FDF62B1B2B16EF
Procedure: RNAV (GPS) RWY 26 AMDT 1		Enroute: NO	Specialist: Brandenburg, Phillip		Agreement Number:
Airport ID: PABR			Airport City: UTQIAGVK		State: AK
Facility ID:	Facility Type:	Flight Inspection Remark Type: New FC Slot			
<p>Procedure Comments: MAGVAR ROTATION, RWY 7/25 CHANGED TO 8/26. PENDING DATA USED FOR PABR. MAGVAR OLD - 2010/E19. NEW - 2025/E10. CONTACT ALLAN WILL 4059546103.</p> <p>1/4/21. THIS IS AN UPDATED COPY OF THE FORM DEVELOPED ON 8/10/20. 1. CHANGED ALL CITY NAME REFERENCES FROM BARROW TO UTQIAGVK.</p>					

QUALITY
SN 1/27/21 6
CHECKED

QUALITY
41
CHECKED

BARROW, ALASKA

AL-5463 (FAA)

FIG

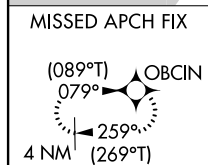
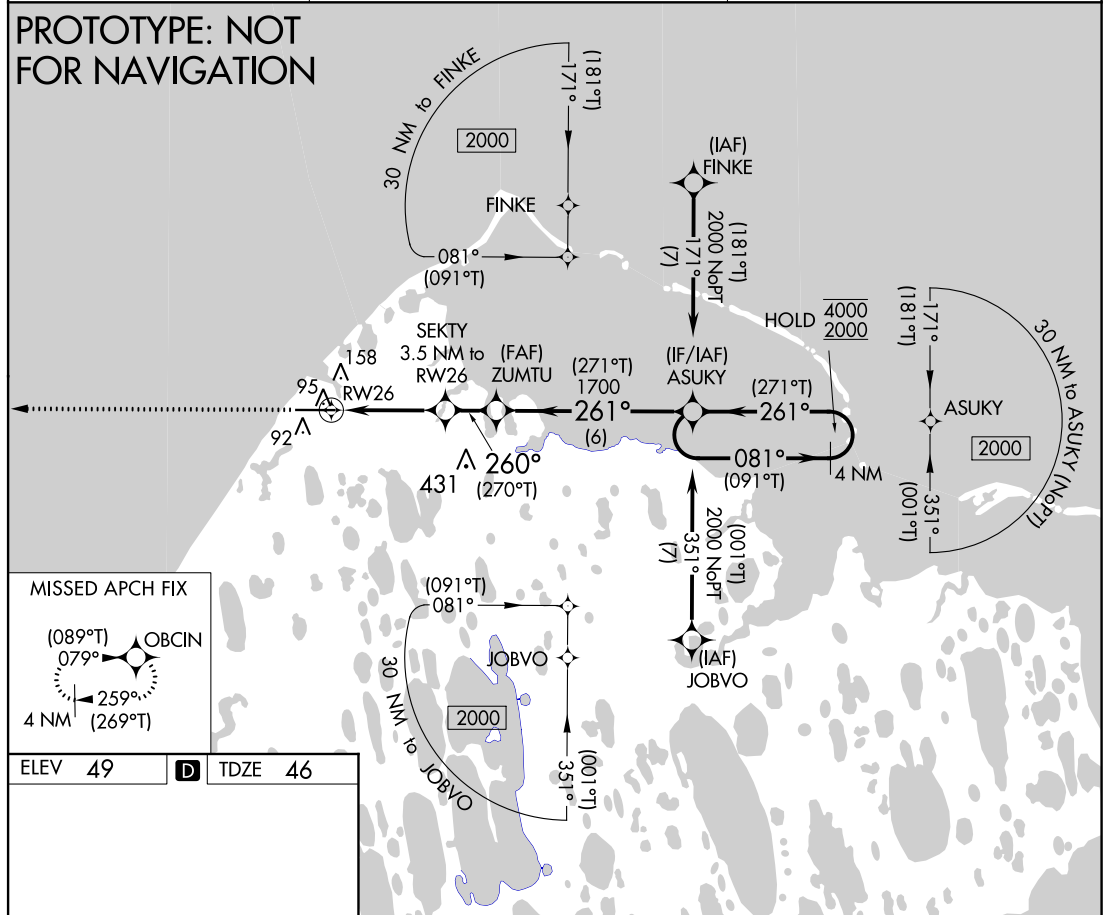
APP CRS	Rwy Idg	5900
260°	TDZE	46
	Apt Elev	49

RNAV (GPS) RWY 26

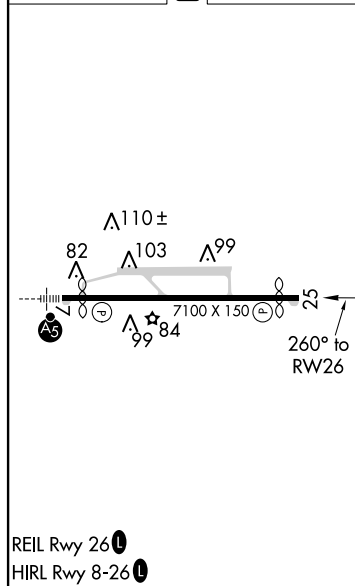
WILEY POST-WILL ROGERS MEMORIAL (BRW)(PABR)

RNP APCH.		MISSED APPROACH: Climb to 2000 direct OBCIN and hold.
Circling NA for Cat A north of Rwy 8-26 -42°C		
AFIS 132.15	ANCHORAGE CENTER 135.3 239.25	BARROW RADIO 123.6 (CTAF) 0

PROTOTYPE: NOT
FOR NAVIGATION



ELEV 49	TDZE 46
---------	---------



OBCIN 2000		ASUKY Holding Pattern 4 NM 081° (091°T) 261° (271°T)	
SEKTY 3.5 NM to RWY26 0.9 NM to RWY26 RWY26		ZUMTU 3.00° TCH 50 1200 1700 6 NM	
CATEGORY	A	B	C
LNNAV MDA	360-1	314 (400-1)	
CIRCLING	420-1 371 (400-1)	500-1 451 (500-1)	500-1½ 451 (500-1½)
			680-2 631 (700-2)

BARROW, ALASKA
Amdt 1 FIG

WILEY POST-WILL ROGERS MEMORIAL (BRW)(PABR)
71°17'N-156°46'W
RNAV (GPS) RWY 26

AUTOMATED AL-5463 RNAV (GPS) RWY 26

AK
7 AUG 2020
COMPILER: CG
REVIEWER:
DBL CHKR:
EFF DATE: FIG

CURRENT

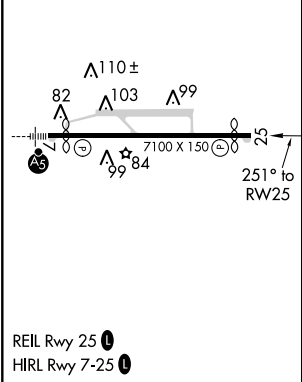
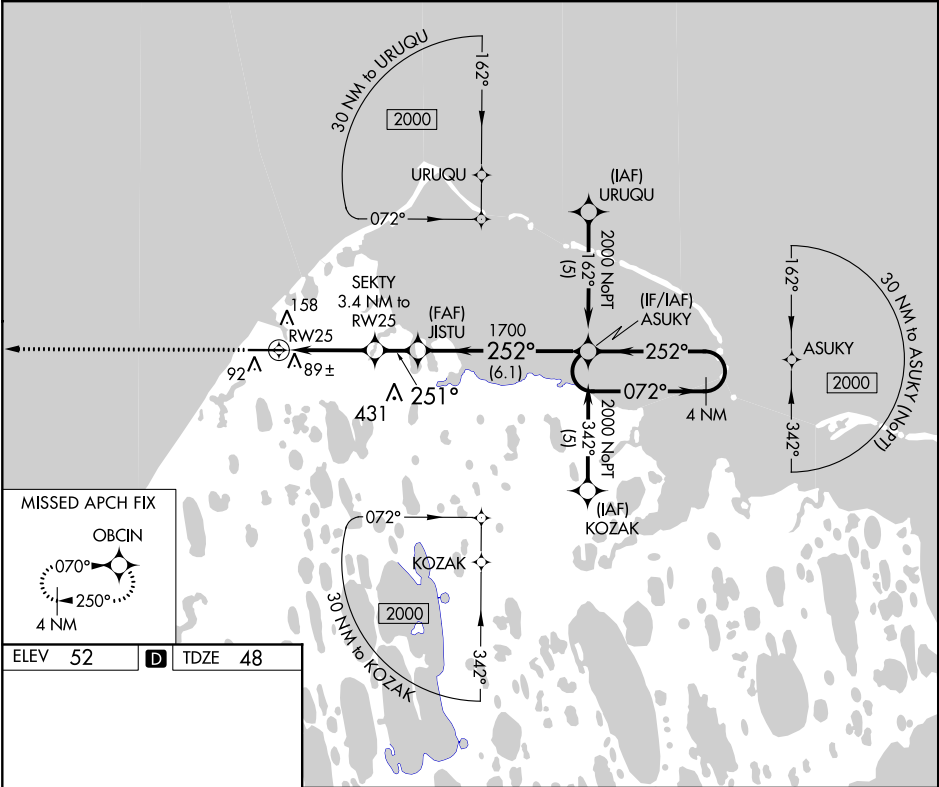
RNAV (GPS) RWY 25



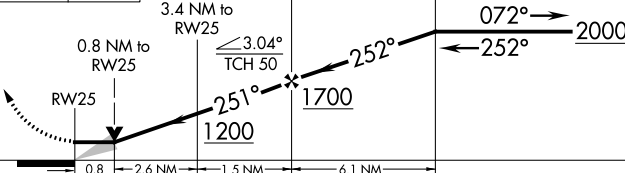
WILEY POST-WILL ROGERS MEMORIAL (BRW)(PABR)

APP CRS	Rwy Idg	5900
251°	TDZE	48
	Apt Elev	52

<div><div>▼</div><div>▲</div><div>❄️ -42°C</div></div>	DME/DME RNP- 0.3 NA. When local altimeter setting not received, use Atkasuk altimeter setting and increase all MDA 140 feet and LNAV and Circling Cat C and D visibility ½ mile. Circling NA for Cat A north of Rwy 7-25. VDP NA with Atkasuk altimeter setting.	MISSED APPROACH: Climb to 2000 direct OBCIN and hold.
--	--	---

AFIS 132.15	ANCHORAGE CENTER 135.3 239.25	BARROW RADIO 123.6 (CTAF) 0
----------------	----------------------------------	--------------------------------

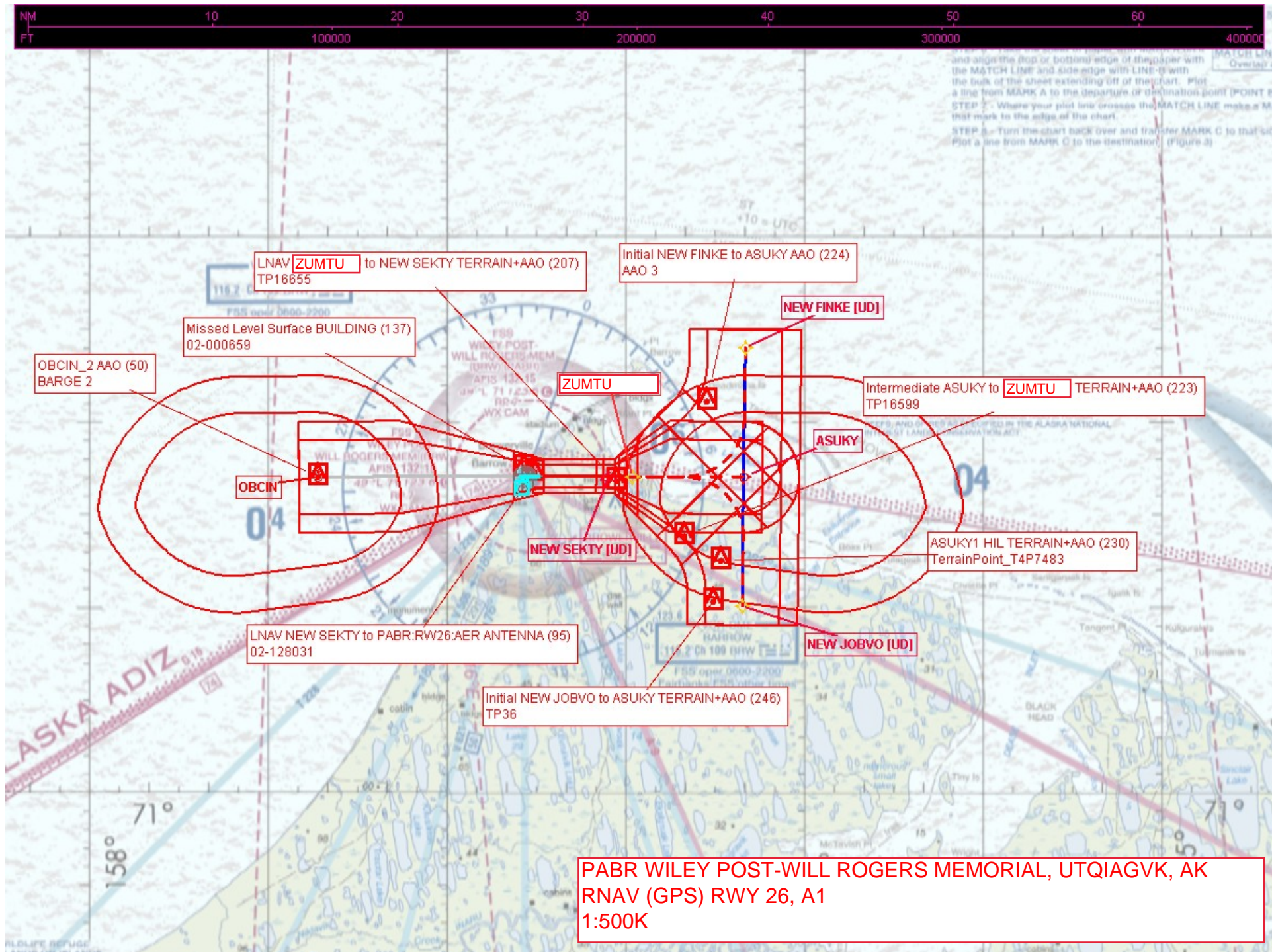


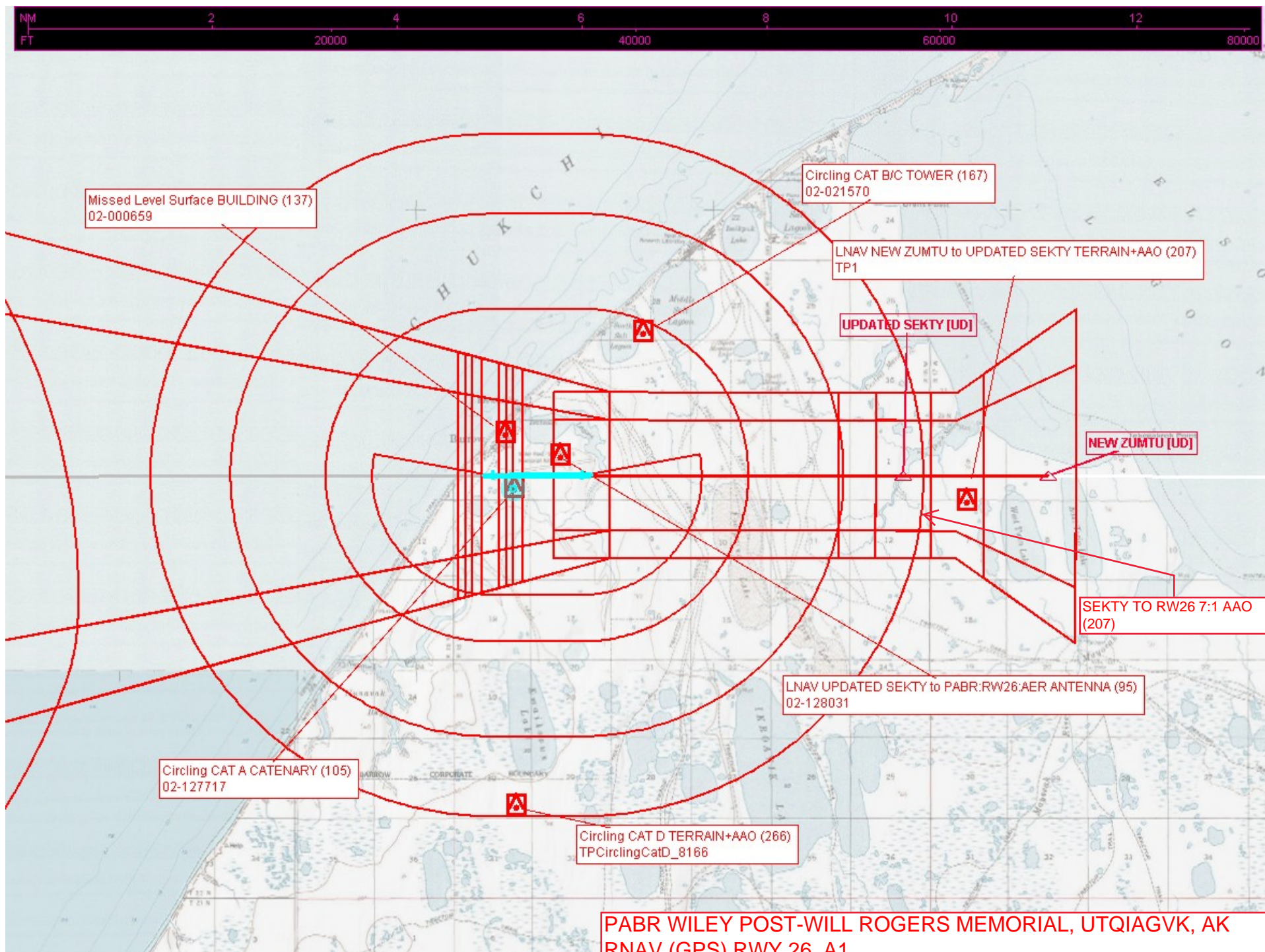
2000	OBCIN				
					
					
CATEGORY	A	B	C	D	
LNAV MDA	360/50 312 (400-1)				
CIRCLING	420-1 368 (400-1)	520-1 468 (500-1)	520-1½ 468 (500-1½)	620-2 568 (600-2)	

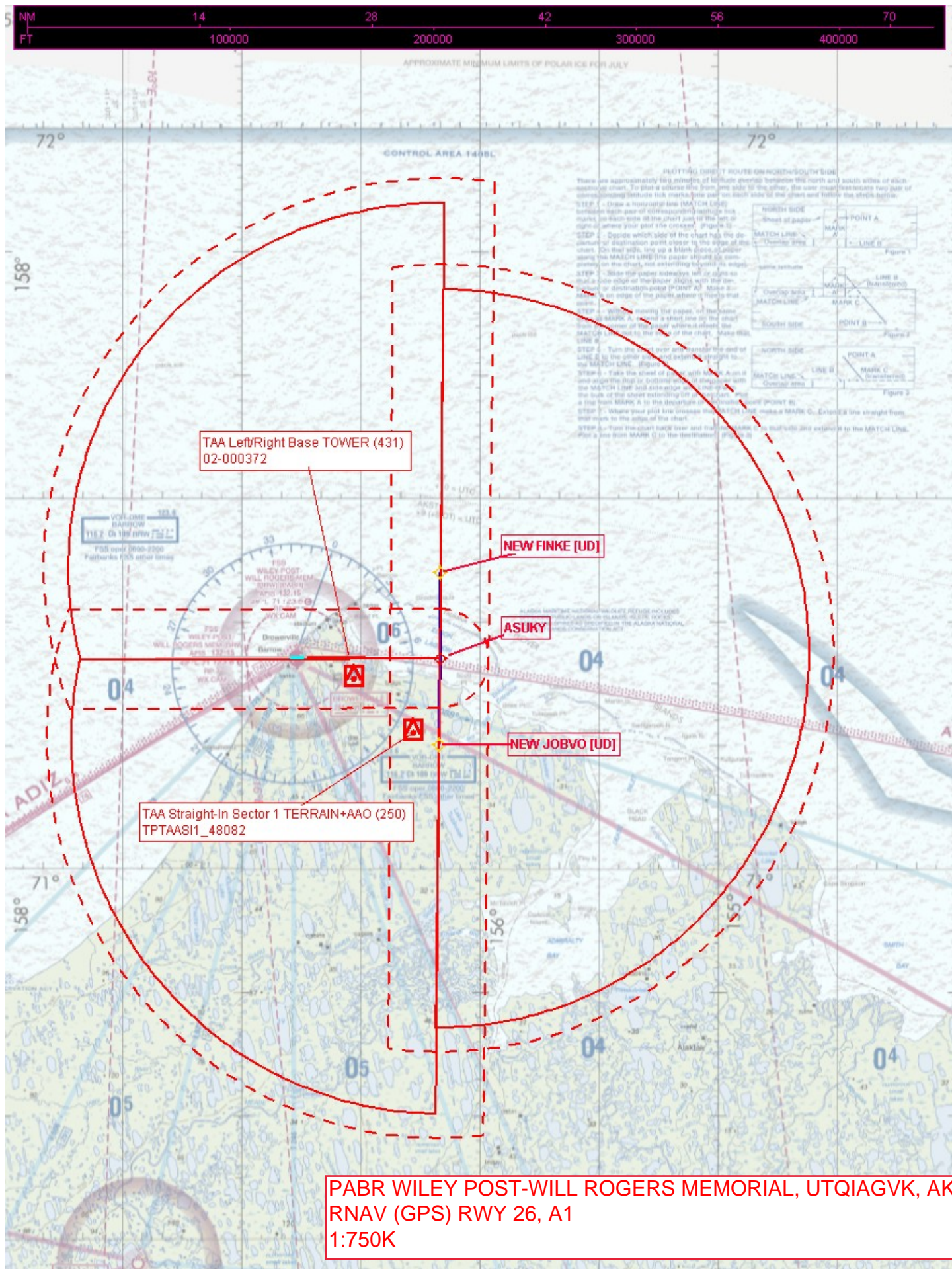
RNAV (GPS) RWY 25

AK, 21 MAY 2020 to 16 JUL 2020

AK, 21 MAY 2020 to 16 JUL 2020







Federal Aviation Administration Categorical Exclusion Declaration

Date: 01/15/20

IFP: Christiansen, Kyle (kyle.r.christiansen@faa.gov)

Airport Contact: -

Request ID: PABR_20115

Single or Multiple Procedure: Multiple

Procedure Name(s): ILS or LOC/DME RWY 8 LOC/DME BC RWY 26 RNAV (GPS) RWY 26 RNAV (GPS) RWY 8 VOR RWY 26 Textual ODP

Procedure Request Description:

Magvar update required for BRW airport, BRW VOR/DME and VIR NDB - 2010 MagVar E19, 2020 MagVar E13.
Runway renumber required from 7/25 to 8/26.

ILS or LOC/DME RWY 8 - H-I-L included at OBCIN at 2000' (replaces (CFBGZ), Procedure turn removed from WANJO

LOC/DME BC RWY 26 - H-I-L included at AGXAN at 2000', Procedure turn removed from JISTU

RNAV (GPS) RWY 8 - SIXEE (IAF) moved to 712400.12n-1572157.67w (2 NM north - WP129), FEFTU (IAF) moved to 711003.61n-1572130.95w (2 NM south - WP131)

RNAV (GPS) RWY 26 - URUQU (IAF) moved to 712400.69n-1571002.23w (2 NM north - WP176), KOZAK (IAF) moved to 711004.17n-1561026.79w (2 NM south - WP178)

VOR RWY 26 - H-I-L added at PEMOW at 2000'

Textual ODP - runway numbers changed

Declaration of Exclusion:

The FAA has reviewed the above referenced proposed action and it has been determined, by the undersigned, to be categorically excluded from further environmental documentation according to FAA Order 1050.1, "Environmental Impacts: Policies and Procedures." The implementation of this action will not result in any extraordinary circumstances in accordance with FAA Order 1050.1.

Basis for this Determination:

This review was conducted in accordance with policies and procedures in Department of Transportation Order 5610.1, "Procedures for Considering Environmental Impacts" and FAA Order 1050.1.

The applicable Categorical Exclusion is:

5-6.5 k. Publication of existing air traffic control procedures that do not essentially change existing tracks, create new tracks, change altitude, or change concentration of aircraft on these tracks.

The above flight procedure has been developed within the accepted parameters.

Concurrence/Reviewed By: CHRISTOPHER A COZART Digitally signed by CHRISTOPHER A COZART
Date: 2020.03.04 14:34:49 -08'00' Date: _____

Title: Environmental Specialist, Operations Support Group
Western Service Center, AJV-W25

Approved By: RYAN WADE WELER Digitally signed by RYAN WADE
WELER
Date: 2020.03.06 12:29:44 -08'00' Date: _____

Title: Environmental Specialist, Operations Support Group
Western Service Center, AJV-W25

Magnetic Variation (MV) Declination Request

☐ New Assignment ☒ Change

Requested by: Shane Fowler

Organization: AJV-A423

Phone: 954-8267

Current Magnetic Declination of Record: 19 ° East

Epoch Year: 2010

New Magnetic Declination of Record: 13 ° East

Epoch Year: 2020

Airport Information

Airport ID: PABR

NASR ID (if different): BRW

Airport Name: WILEY POST-WILL ROGERS MEMORIAL

Airport City: BARROW

State/Country: AK/US

Navigational Aid Information [ALL Facility IDs and Types]

* Facilities on Airports. At airports with localizer(s) or more than one navigational aid, the MV at the airport reference point (ARP) must be designated and assigned to all facilities at that airport, including all components of the ILS.

BRW VOR/DME

VIR NDB

BRW LOC/DME

Concurrent with Publication of Procedure(s), list all affected procedures and include the AMDT.#

* The Procedure Tracking System (PTS) has Task Report Type "MAGVAR" available. Please add the MAGVAR Report Type Code to all task listed that are affected by the MV update.

TAKEOFF MINIMUMS BARROW AK PABR, ORIG-
B

ILS OR LOC RWY 8, AMDT 2

LOC BC RWY 26, AMDT 2

RNAV (GPS) RWY 26, AMDT 1

RNAV (GPS) RWY 8, AMDT 1

VOR RWY 26, AMDT 2

PTS Estimated Chart Date:

Comments:

RWY RENUMBER FROM 07/25 TO 08/26.

Form Submission for Specialists:

Save this form to your computer, then email it
(as an attachment) to your Manager/Supervisor.

For Lead/Manager Use Only

Comments (if applicable):

Lead/Manager:

Phone:

Submit to IFP Coordination Team