

Flight Procedures Cover Page	Task Action: P-NOTAM	Task Type: IAP	Estimated Chart Date: 03/25/2021	APWS Task ID: EE060B504EEA4B99917F40232D7258D9	APWS Project ID: E2F723D6202149B0A6E4CC54C87D731F
Procedure: RNAV (GPS) RWY 21 AMDT 1B		Enroute: NO	Specialist: Lafferty, James		Agreement Number:
Airport ID: KMHK			Airport City: MANHATTAN		State: KS
Facility ID:	Facility Type:	Flight Inspection Remark Type:			
<div> <div>Procedure Comments:</div> <div> P-NOTAM This Cancels FDC 9/1789 Order 8260.3, chapter 2, New Circling Criteria Applied Contact Dave Teffeteller at 202-267-5177 </div> </div>					



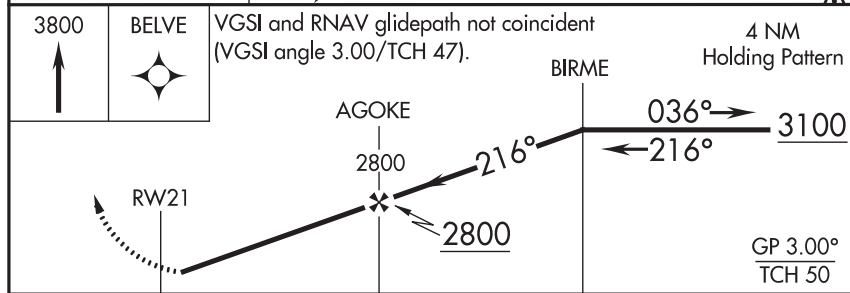
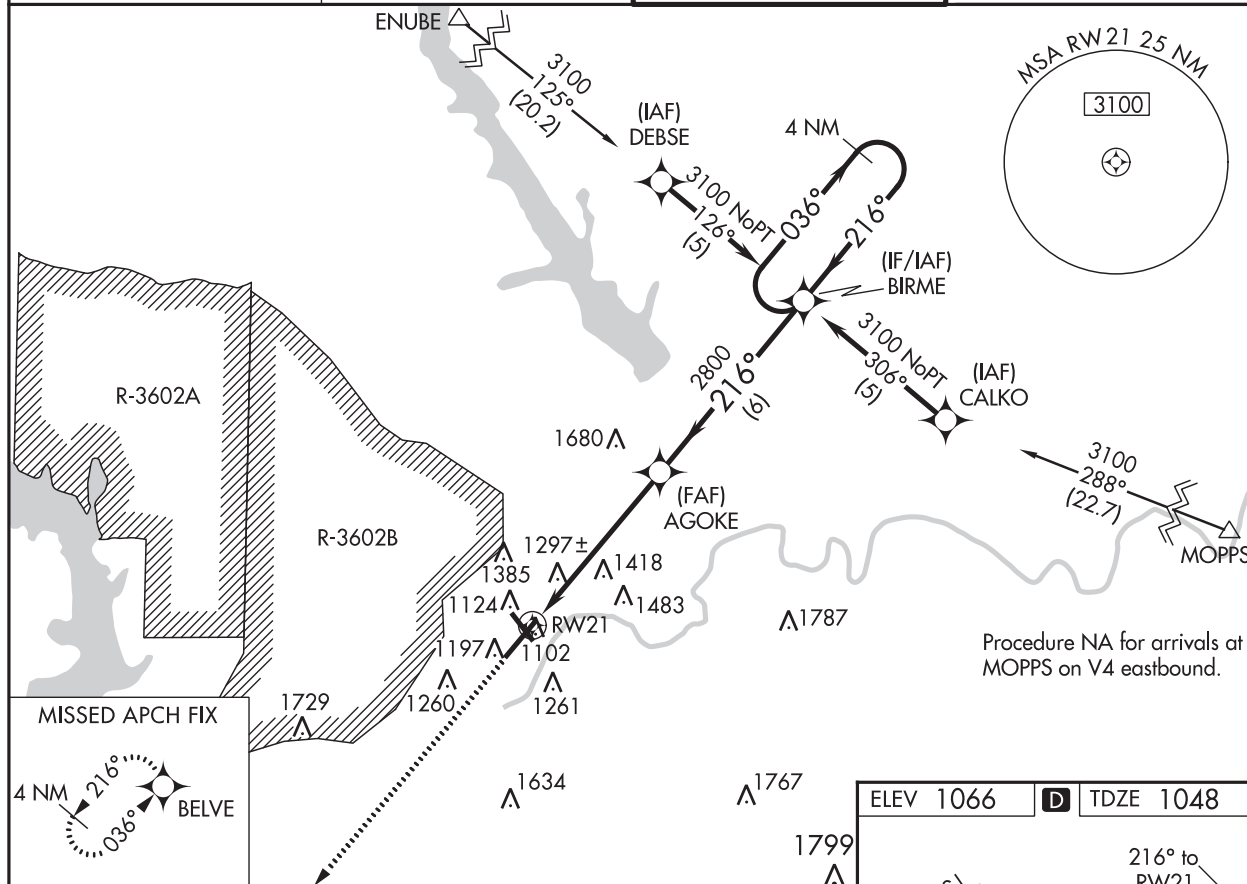
WAAS CH 53319 W21A	APP CRS 216°	Rwy Idg TDZE Apt Elev	7000 1048 1066
--	------------------------	-----------------------------	---

RNAV (GPS) RWY 21 MANHATTAN RGNL (MHK)

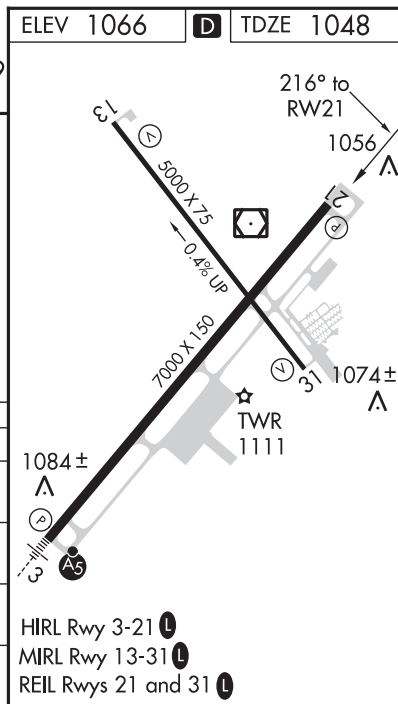
⚠ Circling NA west of Rwy 3-21. Baro-VNAV NA when using Marshall AAF altimeter setting. For uncompensated Baro-VNAV systems, LNAV/VNAV NA below -17°C (2°F) or above 46°C (114°F). DME/DME RNP-0.3 NA. When local altimeter setting not received, use Marshall AAF altimeter setting: increase LPV DA to 1264 feet, LNAV/VNAV DA to 1718 feet; increase all MDAS 20 feet and visibility Cat C 1/8 SM.

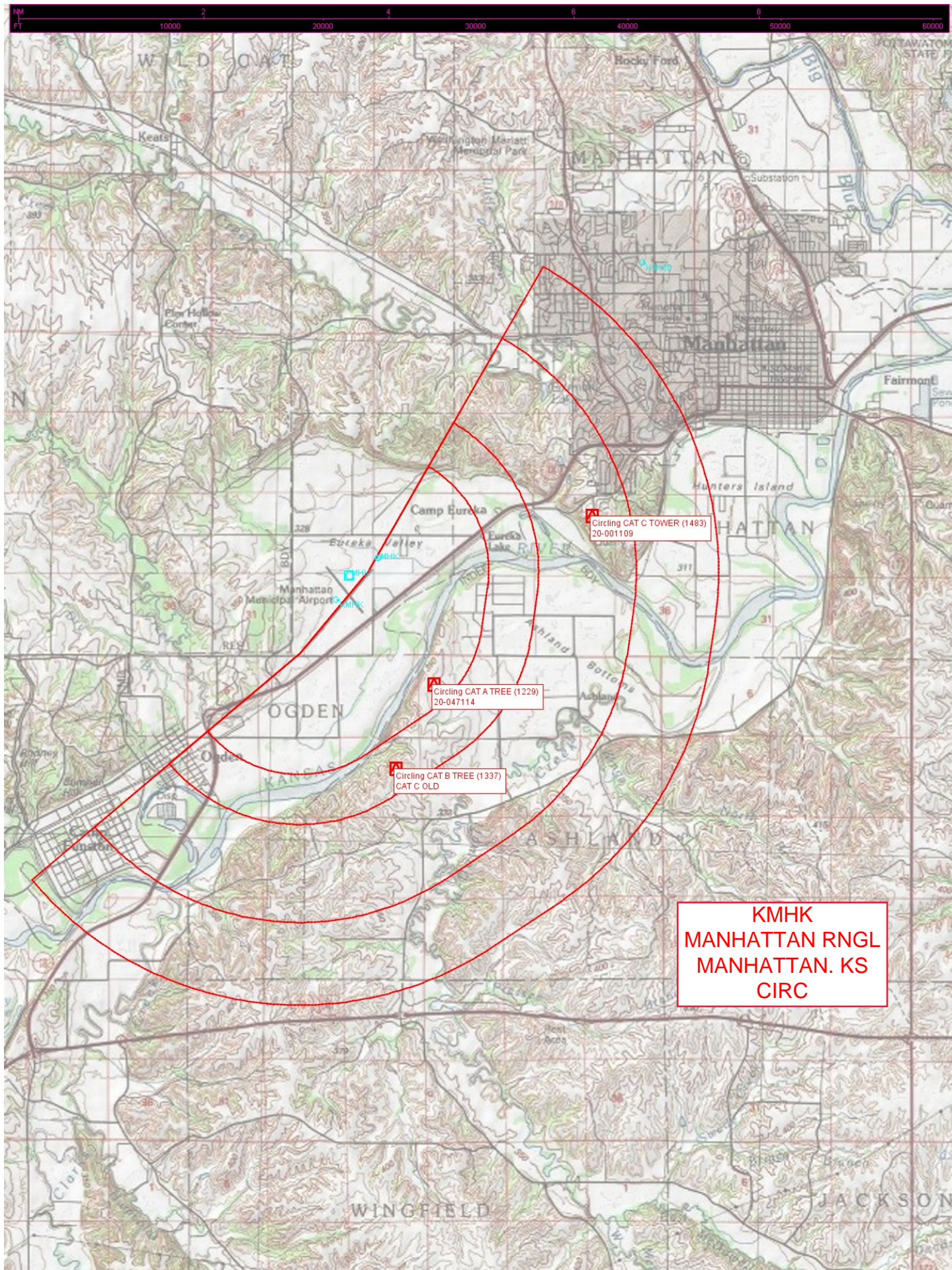
MISSED APPROACH: Climb to 3800 direct BELVE and hold.

ASOS 119.075	MARSHALL GCA★ 121.25 254.35	MANHATTAN TOWER★ 118.55 (CTAF) 0	GND CON 121.85
------------------------	---------------------------------------	--	--------------------------



CATEGORY	A	B	C	D
LPV DA	1248-3/4	200 (200-3/4)		
LNAV/VNAV DA	1702-2 1/2	654 (700-2 1/2)		
LNAV MDA	1720-1 672 (700-1)	1720-1 7/8 672 (700-1 7/8)	1720-2 672 (700-2)	
CIRCLING	1680-1 614 (700-1)	1700-1 634 (700-1)	1700-1 7/8 634 (700-1 7/8)	1780-2 1/4 714 (800-2 1/4)





Circling CAT C TOWER (1493)
20-001109

Circling CAT A TREE (1229)
20-047114

Circling CAT B TREE (1337)
CAT C OLD

KMHK
MANHATTAN RNGL
MANHATTAN. KS
CIRC