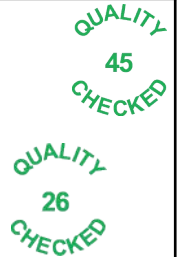


Flight Procedures Cover Page	Task Action: P-NOTAM	Task Type: IAP	Estimated Chart Date: 04/22/2021	APWS Task ID: BC684B43327346A68F4DCB9086D2CF06	APWS Project ID: 10AD5CACAD5F4F24B96FA67311088E4E
Procedure: RNAV (GPS) RWY 17 AMDT 2B		Enroute: NO	Specialist: Martinez, Rafael		Agreement Number:
Airport ID: F00			Airport City: BONHAM		State: TX
Facility ID:	Facility Type:	Flight Inspection Remark Type:			
<p>Procedure Comments:</p> <p>P-NOTAM.</p> <p>ORDER 8260.3, CHAPTER 2, NEW CIRCLING CRITERIA APPLIED.</p> <p>CONTACT: LONNIE EVERHART 405-954-4576/DAVID TEFFETELLER 202-267-5177.</p>					



OLD

BONHAM, TEXAS

AL-6722 (FAA)

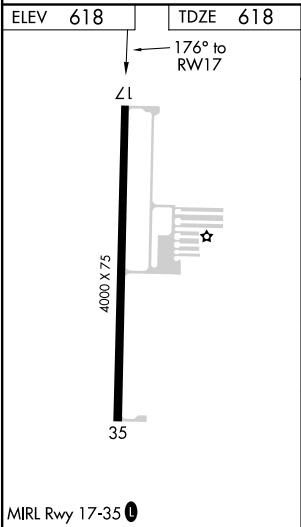
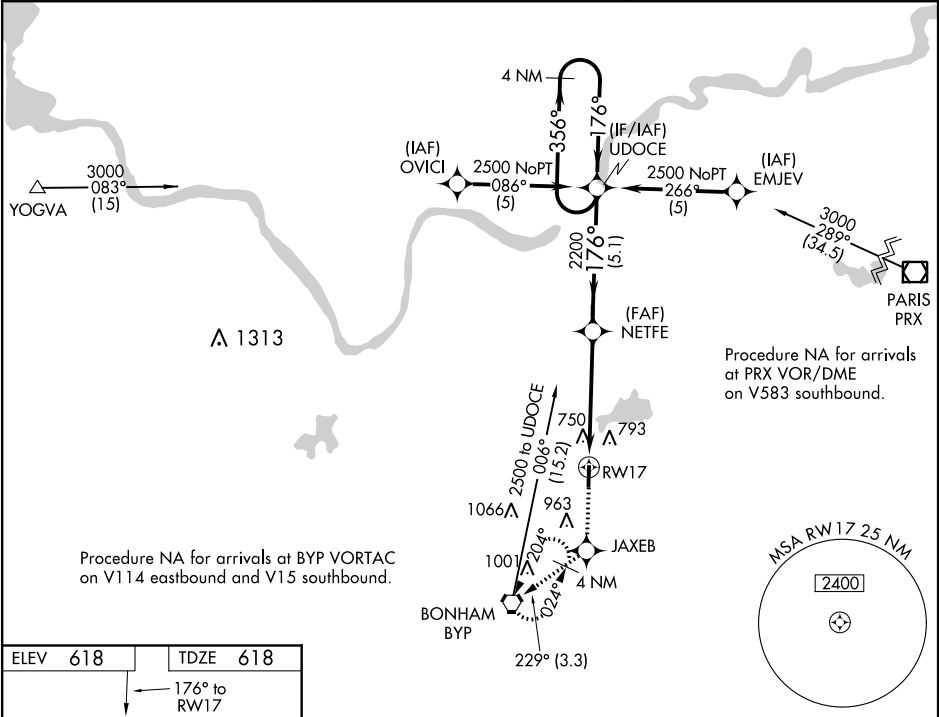
19171

WAAS CH 99523 W17A	APP CRS 176°	Rwy Idg TDZE Apt Elev 618
--	------------------------	--

RNAV (GPS) RWY 17
JONES FIELD (F00)

NA Baro-VNAV NA. Use Greenville altimeter setting; when not received, use Paris altimeter setting and increase all DA 6 feet; increase all MDA 20 feet, increase LNAV/VNAV Cats A/B visibility 1/8 mile. DME/DME RNP-0.3 NA.	MISSED APPROACH: Climb to 2500 direct JAXEB and on track 229° to BYP VORTAC and hold.
---	---

AWOS-3 PT 118.05	FORT WORTH CENTER 127.6 254.3	UNICOM 122.8(CTAF) 0
----------------------------	---	--------------------------------



2500 ↑	JAXEB ✦	tr 229° ◡	BYP ◡	4 NM Holding Pattern	
<p>The diagram illustrates the approach path for runway 17. It begins with a dashed line representing the initial approach, which turns to a solid line at a 176° angle. The path is marked with altitudes: 2200 at NETFE, 2200 at a point further along, and 2500 at UDOCE. The distance from the start of the solid path to NETFE is 4.9 NM, and from NETFE to UDOCE is 5.1 NM. A holding pattern is indicated at 2500 with a 356° outbound leg and a 176° inbound leg. The final approach is at a 356° angle to the runway, with a 3.00° GP and 35° TCH.</p>					
CATEGORY	A		B	C	D
LPV DA	906-1		288 (300-1)	NA	
LNAV/VNAV DA	1030-1 ³ / ₈		412 (500-1 ³ / ₈)	NA	
LNAV MDA	1180-1		562 (600-1)	NA	
CIRCLING	1240-1		622 (700-1)	NA	

BONHAM, TEXAS
Amdt 2A 02APR15

33°37'N-96°11'W

JONES FIELD (F00)
RNAV (GPS) RWY 17

SC-2, 28 JAN 2021 to 25 FEB 2021

SC-2, 28 JAN 2021 to 25 FEB 2021

NM 1 2 3 4 5 6 7 8 9
FT 10000 20000 30000 40000 50000 60000

12.3514M

F00
JONES FIELD
BONHAM, TX
RNAV (GPS) RWY 17 AMDT 2B
CIRCLING 100K

