


<b>Flight Procedure Tracking Form</b>		<b>Action:</b> AMENDMENT	<b>Task Type:</b> IAP	<b>Date Open:</b> 09/25/2019	<b>Task #:</b> 2019092535147801001	<b>Request #:</b> 20190925351478
<b>Procedure:</b> RNAV (GPS) RWY 4 AMDT 2C			<b>Airport ID:</b> KDYR	<b>Airport:</b> DYERSBURG RGNL		<b>Reimbursable #:</b> NO
<b>City:</b> DYERSBURG	<b>ST:</b> TN	<b>GPS #:</b>	<b>Estimated Chart Date:</b> 03/26/2020		<b>FICO #:</b>	
<b>Fac ID:</b> N/A		<b>Fac. Type:</b>		<b>Specialist:</b> ANDRE TUCKER		
<b>Procedure Review</b>						
	<b>Rec'd</b>	<b>Rel'd</b>	<b>Full Name</b>	<b>Comments</b>		
<b>Lead:</b>	10/03/2019					
<b>QA:</b>						
<b>Liaison:</b>						
<b>Procedure Comments:</b> ENROUTE-NON <b>Remark Type:</b> INFORMATION  PROCESSED IAW AIRCRAFT OPERATIONS GROUP (AJW-33) MEMO, OCTOBER 3, 2018, SUBJECT: FLIGHT INSPECTION REVIEW NOT REQUIRED.  LNAV/VNAV FINAL REVISED FOR NEW OBSTACLE- 463 TREE (47-024562) 355837.61N/0892615.71W, AC 2C.  ACTIVE DATA USED FOR KDYR.  CANCELS FDC NOTAM 9/8520.  CONTACT JOHN BORDY 405-954-0980.						

DYERSBURG, TENNESSEE

AL-966 (FAA)

19143

WAAS CH <b>82320</b> <b>W04A</b>	APP CRS <b>041°</b>	Rwy Idg TDZE Apt Elev <b>5698</b> <b>316</b> <b>338</b>
--	------------------------	--

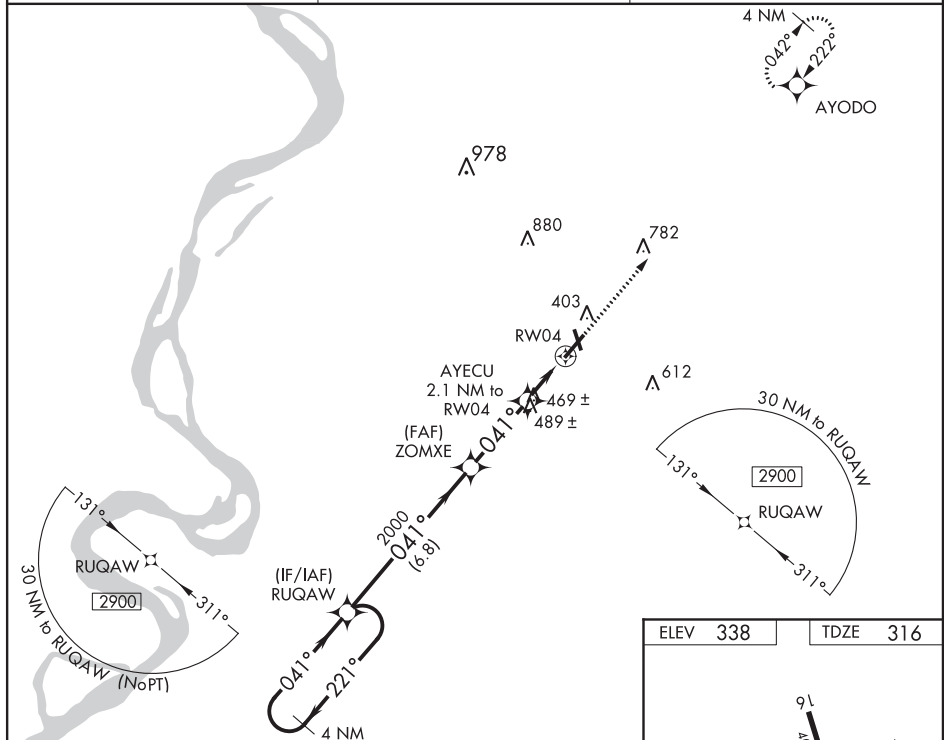
OLD

# **RNAV (GPS) RWY 4** DYERSBURG RGNL (DYZ)

**⚠** For uncompensated Baro-VNAV systems, LNAV/VNAV NA below -15°C (5°F) or above 54°C (130°F). Baro-VNAV and VDP NA when using Blytheville altimeter setting. DME/DME RNP-0.3 NA. Night landing: Rwy 16, 34 NA. When local altimeter setting not received, use Blytheville Muni altimeter setting: increase LPV DA to 648 feet and LNAV/VNAV DA to 652 feet and all MDA 60 feet; increase LPV visibility all Cats and LNAV/VNAV visibility all Cats and LNAV Cats C/D visibility ¼ mile.

**MISSED APPROACH:** Climb to 2900 direct AYODO and hold.

AWOS-3PT <b>135.625</b>	MEMPHIS CENTER <b>134.65 316.15</b>	UNICOM <b>123.05</b> (CTAF)
----------------------------	--	--------------------------------



4 NM Holding Pattern		VGSI and RNAV glidepath not coincident (VGSI Angle 3.00/TCH 35).		2900 AYODO	
2900 ← 221°		041° →		*LNAV only.	
GP 3.00° TCH 40		2000		RW04	
6.8 NM		3.1 NM		1.2 NM	
CATEGORY		A		D	
LPV DA		588-1		272 (300-1)	
LNAV/VNAV DA		592-1		276 (300-1)	
LNAV MDA		720-1		720-1½	
CIRCLING		740-1		900-2	
		402 (500-1)		562 (600-2)	

DYERSBURG, TENNESSEE  
Amdt 2B 04FEB16

36°00'N-89°24'W

DYERSBURG RGNL (DYZ)  
**RNAV (GPS) RWY 4**

SE-1, 07 NOV 2019 to 05 DEC 2019

SE-1, 07 NOV 2019 to 05 DEC 2019

NM  
FT 10000 20000 30000 40000 50000 60000

AIRPORT ID: KDYR  
AIRPORT NAME: DYERSBURG RGNL  
CITY/STATE: DYERSBURG, TN  
PROC ID: RNAV (GPS) RWY 4  
AMDT: ORIG-C  
SCALE: 1:100,000  
LNAV/VNAV AND CIRC

