

Flight Procedures Cover Page	Task Action: FLIGHT CHECK	Task Type: IAP	Estimated Chart Date: 02/20/2025	APWS Task ID: BBC8C92C1F2B4F79A23F3987CA73D4EE	APWS Project ID: 3341D73E99314B589AED6A6874D5A2C9
Procedure: RNAV (GPS) RWY 19R AMDT 1A		Enroute: NO	Specialist: Swinson, Robert		Agreement Number:
Airport ID: KRVS			Airport City: TULSA		State: OK
Facility ID:	Facility Type:	Flight Inspection Remark Type: New FC Slot			
<div>Procedure Comments:</div> <div>PENDING AIRNAV DATA USED FOR KRVS AIRPORT AND RUNWAYS.</div> <div>CANCELS IFDC NOTAM 3/3779.</div> <div>LNAV CONTROLLING OBSTACLE - TREE (40-099277) 360404.54N/0955921W.</div> <div>CONTACT CASIMIR TABAKA, AJV-A432, 405-202-7857.</div> <div><div>QUALITY 38 CHECKED</div><div>QUALITY 19 CHECKED</div></div>					

WAAS CH 81939 W19A	APP CRS 190°	Rwy Idg TDZE 638 Apt Elev 638	5101 638 638
--	------------------------	---	---

RNAV (GPS) RWY 19R

TULSA RIVERSIDE (RVS)

RNP APCH - GPS.

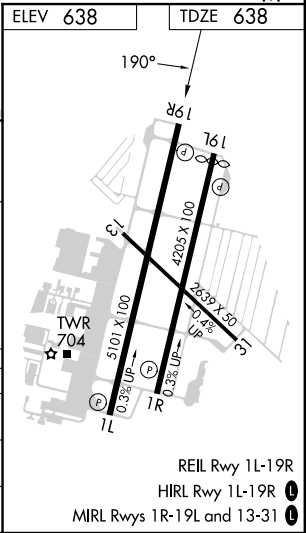
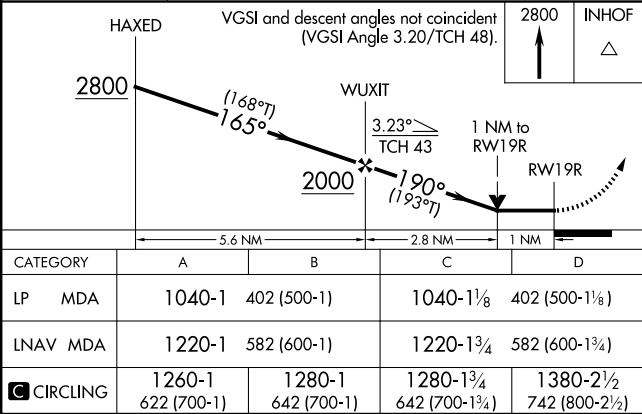
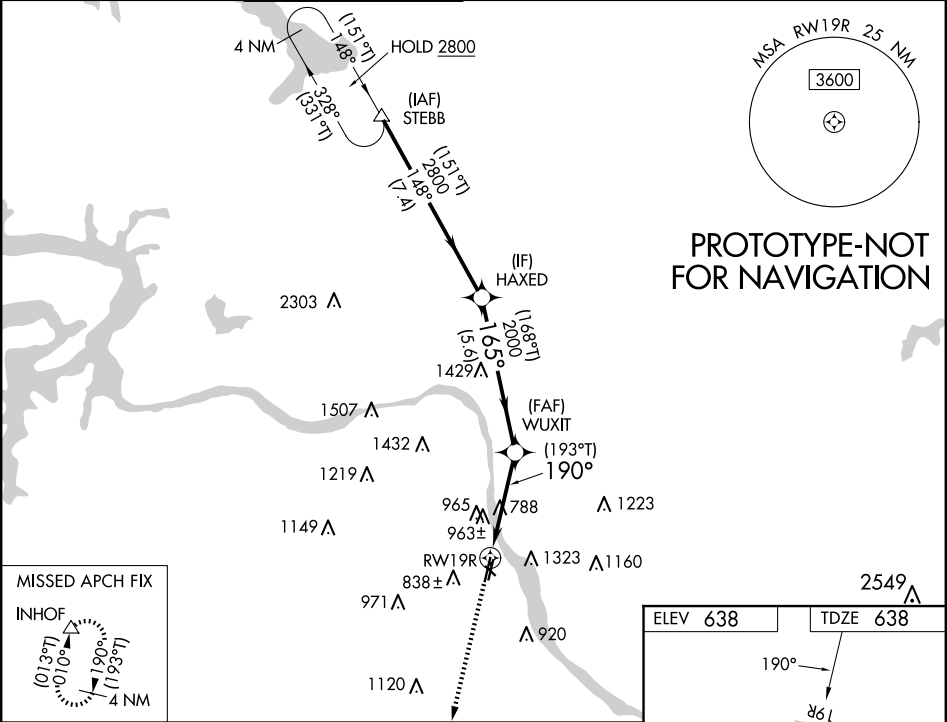
⚠

⚠

Circling NA northeast of Rwys 31 and 19L. Rwy 19R helicopter visibility reduction below ¾ SM NA. VDP NA when using TUL altimeter setting. When local altimeter setting not received, use TUL altimeter setting; increase all MDAs 40 feet and LP visibility Cat C/D ¼ SM and Circling visibility Cat C ¼ SM.

MISSED APPROACH: Climb to 2800 direct INHOF and hold.

ATIS 126.5	TULSA APP CON 134.7	RIVERSIDE TOWER ★ 120.3 (CTAF) 0	GND CON 121.7	CLNC DEL 124.5	UNICOM 122.95
----------------------	-------------------------------	---	-------------------------	--------------------------	-------------------------



TULSA, OKLAHOMA

AL-5427 (FAA)

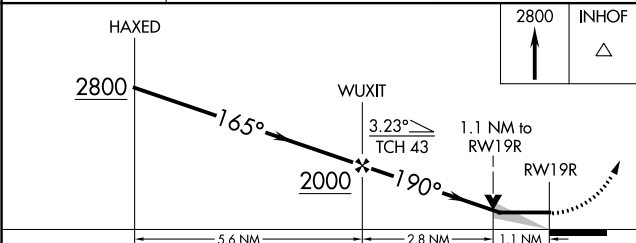
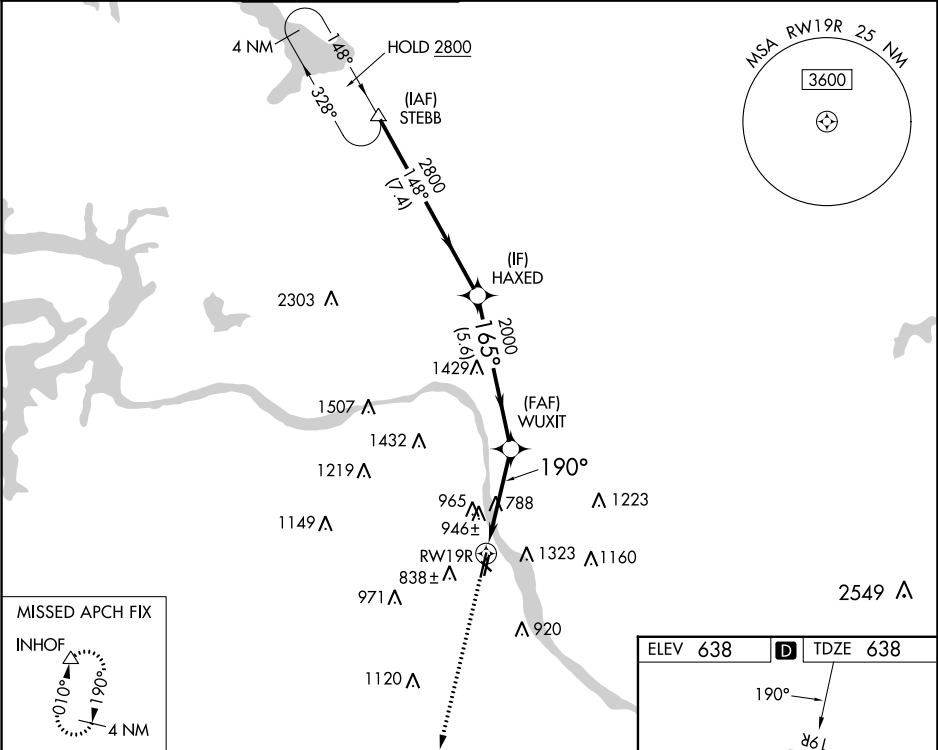
24137

WAAS CH 81939 W19A	APP CRS 190°	Rwy Idg TDZE 638 Apt Elev 638
--	------------------------	---

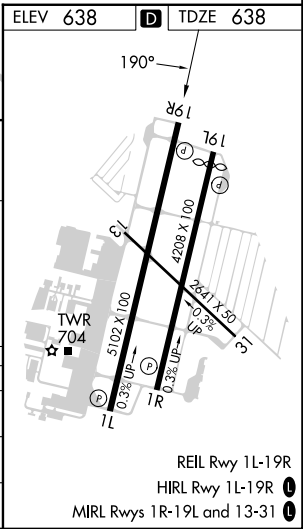


RNAV (GPS) RWY 19R
TULSA RIVERSIDE (RVS)

<div><div></div><div></div></div>	Circling NA northeast of Rwsy 31 and 19L. DME/DME RNP-0.3 NA.			MISSED APPROACH: Climb to 2800 direct INHOF and hold.	
	ATIS 126.5	TULSA APP CON 134.7	RIVERSIDE TOWER ★ 120.3 (CTAF) 0	GND CON 121.7	CLNC DEL 124.5



CATEGORY	A	B	C	D
LP MDA	1040-1	402 (500-1)	1040-1½	402 (500-1½)
LNAV MDA	1200-1	562 (600-1)	1200-1½	562 (600-1½)
Ⓢ CIRCLING	1260-1 622 (700-1)	1280-1 642 (700-1)	1280-1¾ 642 (700-1¾)	1380-2½ 742 (800-2½)



TULSA, OKLAHOMA
Amdt 1 02MAR17

36°02'N-95°59'W

TULSA RIVERSIDE (RVS)
RNAV (GPS) RWY 19R

SC-1, 05 SEP 2024 to 03 OCT 2024

SC-1, 05 SEP 2024 to 03 OCT 2024

