

WAAS CH 72710 W28A	APP CRS 281°	Rwy Idg 5500 TDZE 809 Apt Elev 809
----------------------------------------	------------------------	---------------------------------------------------------------

RNAV (GPS) RWY 28
COVINGTON MUNI (CVC)

T
A NA

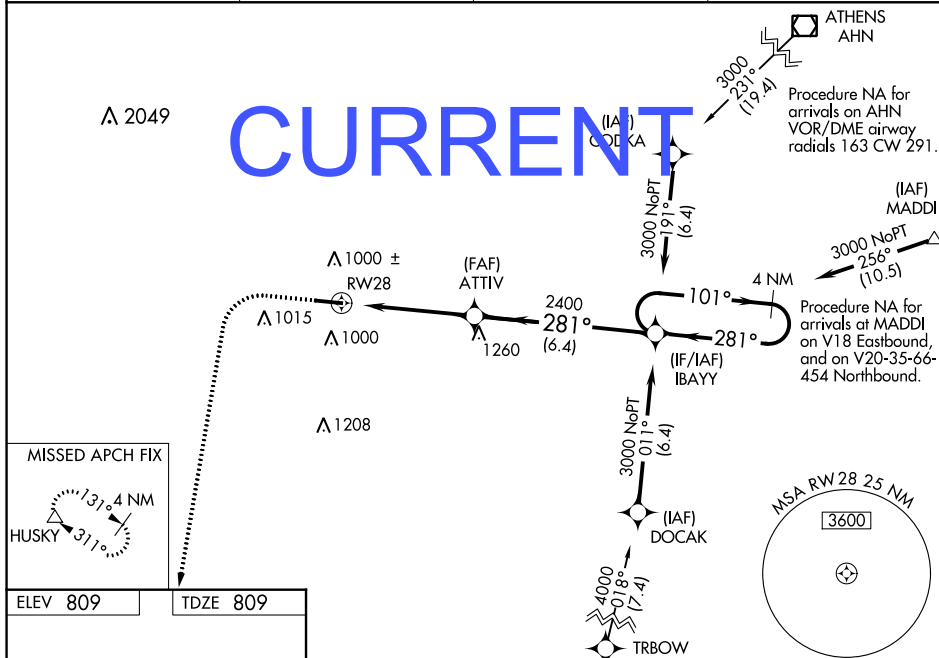
Baro-VNAV NA when using Lawrenceville altimeter setting. For uncompensated Baro-VNAV systems, LNAV/VNAV NA below -16°C (3°F) or above 54°C (130°F). DME/DME RNP-0.3 NA. Helicopter visibility reduction below ¼ SM NA. When local altimeter setting not received, use Lawrenceville altimeter setting and increase all DA 85 feet, all MDA 100 feet, increase LPV and LNAV/VNAV, LNAV Cat C and D visibility ¼ mile, increase Circling Cat C visibility ¼ mile. VDP NA when using Lawrenceville altimeter setting.

MISSED APPROACH:
Climb to 1300 then
climbing left turn to
3000 direct HUSKY
and hold.

AWOS-3 118.725	ATLANTA APP CON 128.575 343.675	CLNC DEL 119.875	UNICOM 123.0 (CTAF) ①
--------------------------	-------------------------------------------	----------------------------	---------------------------------

A 2049

CURRENT (IA) CODE KA 



MISSED APCH FIX



ELEV 809

TDZE 809

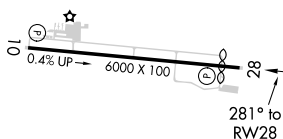


Diagram illustrating the 4 NM Holding Pattern for the 1300-3000 frequency range. The pattern is a racetrack shape. The inbound leg is 2.4 NM, the outbound leg is 2.4 NM, and the crossbar is 1.3 NM. The holding pattern is 4 NM. The diagram shows the 1300-3000 frequency range, the 4 NM Holding Pattern, the 2.4 NM inbound and outbound legs, the 1.3 NM crossbar, and the 4 NM Holding Pattern.

MIRL Rwy 10-28 **L**

ATLANTA, GEORGIA

Amdt 1C 15SEP16

33°38'N-83°51'W

COVINGTON MUNI (CVC)
RNAV (GPS) RWY 28

SE-4, 23 APR 2020 to 21 MAY 2020

AIRPORT ID	KCVC
AIRPORT NAME	COVINGTON MUNI
CITY	ATLANTA
STATE	GA
Proc ID:	RNAV GPS RWY 28 CIRCLING
Amdt #	1C
Scale	1:100,000

