

Flight Procedures Cover Page	Task Action: P-NOTAM	Task Type: IAP	Estimated Chart Date: 03/21/2024	APWS Task ID: BA753FE701D5457C9328C8C76A4351DF	APWS Project ID: 0AFFA863A6C5490794BC1AF4D65FB036
Procedure: RNAV (GPS) RWY 25 AMDT 1C		Enroute: NO	Specialist: Prater, Nicholas		Agreement Number:
Airport ID: KEDJ			Airport City: BELLEFONTAINE		State: OH
Facility ID:	Facility Type:	Flight Inspection Remark Type:			
<div>Procedure Comments:</div> <div>PROCESSED IAW TECHNICAL SUPPORT GROUP (AJF-17) MEMO DATED 07/07/2021 GUIDANCE FOR PROCEDURAL CHANGES REQUIRING FLIGHT INSPECTION/VALIDATION.</div> <div>CONTACT JOHN BORDY, AJV-A33, 405-954-0980.</div> <div><div>QUALITY 41 CHECKED</div><div>QUALITY 34 CHECKED</div></div>					

WAAS CH 93628 W25A	APP CRS 254°	Rwy Idg TDZE Apt Elev	5000 1122 1122
--	------------------------	-----------------------------	---

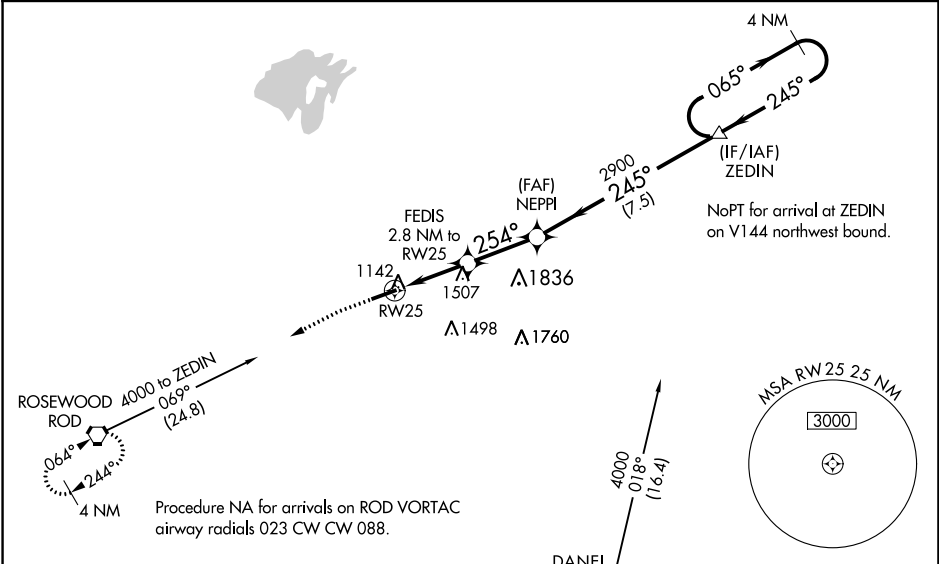
RNAV (GPS) RWY 25
BELLEFONTAINE RGNL (EDJ)

⚠️ **NA**

For uncompensated Baro-VNAV systems, LNAV/VNAV NA below -17°C (2°F) or above 36°C (96°F). DME/DME RNP-0.3 NA. Helicopter visibility reduction below ¾ SM NA. When local altimeter setting not received, use James M. Cox Dayton Intl altimeter setting and increase all DA 94 feet and increase all MDA 100 feet and increase LPV and LNAV/VNAV visibility all Cats ¾ mile and increase LNAV Cat B and Circling Cat B visibility ¼ mile and increase LNAV Cats C and D visibility ½ mile and increase Circling Cat C visibility ½ mile and increase Circling Cat D visibility ¼ mile. VDP and Baro-VNAV NA with James M. Cox Dayton Intl altimeter setting.

MISSED APPROACH:
Climb to 1900 then climbing left turn to 3000 direct ROD VORTAC and hold.

AWOS-3 118.075	COLUMBUS APP CON 118.425 294.5	UNICOM 122.8 (CTAF) 0
--------------------------	--	--



1900 3000 ROD

* LNAV only.

VGSI and RNAV glidepath not coincident (VGSI Angle 4.00/TCH 57).

ZEDIN 4 NM Holding Pattern

FEDIS 2.8 NM to RW25 2900 254° 245° 065° 4000

*1.5 NM to RW25 2040 2900

GP 3.00° TCH 40

1.5 NM 1.3 NM 2.7 NM 7.5 NM

CATEGORY	A	B	C	D
LPV DA	1457-1⅞		335 (400-1⅞)	
LNAV/VNAV DA	1664-1⅞		542 (600-1⅞)	
LNAV MDA	1820-1 698 (700-1)		1820-2 698 (700-2)	
CIRCLING	1820-1 698 (700-1)		1860-2 738 (800-2)	1980-2¾ 858 (900-2¾)

MIRL Rwy 7-25 **0**

REIL Rwy 7 and 25 **0**

EC-2, 07 SEP 2023 to 05 OCT 2023

EC-2, 07 SEP 2023 to 05 OCT 2023