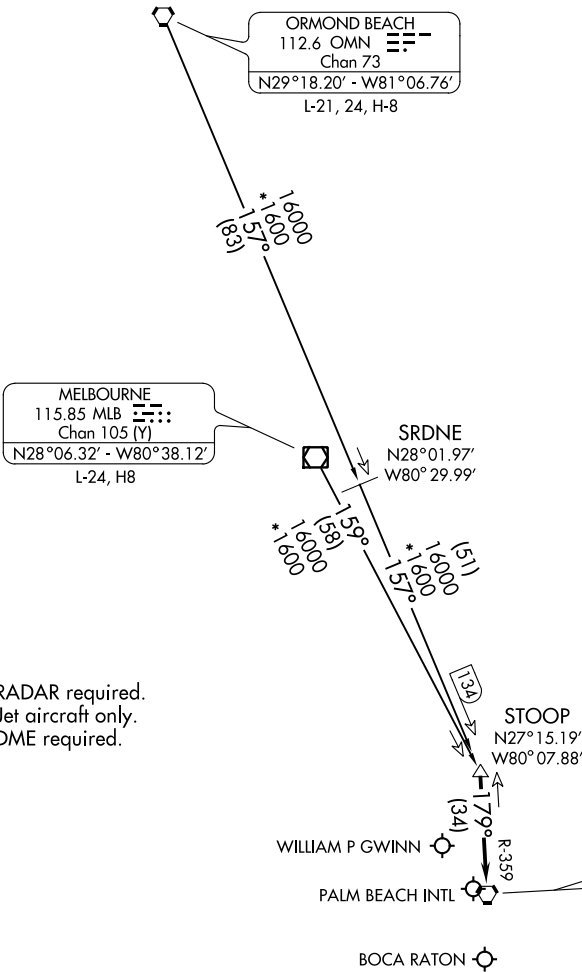


Flight Procedures Cover Page	Task Action: Abbreviated Amendment	Task Type: STAR	Estimated Chart Date: 03/24/2022	APWS Task ID: BA727DA05B51452FA8D26498077882F7	APWS Project ID: 3A33BEB6BCC745A188C93F4FEEC0EE26
Procedure: STOOP TWO		Enroute: YES	Specialist: Blanco, Joseph		Agreement Number:
Airport ID: KPBI			Airport City: WEST PALM BEACH		State: FL
Facility ID:	Facility Type:	Flight Inspection Remark Type:			
<div>Procedure Comments: Abbreviated Amendment</div> <div>PROCESSED IAW TECHNICAL SUPPORT GROUP (AJF-17) MEMO DATED 07/07/2021, SUBJECT: GUIDANCE FOR PROCEDURAL CHANGES REQUIRING FLIGHT INSPECTION VALIDATION</div> <div>CONTACT ALLAN WILL, AJV-A423, 405-954-6103.</div> <div>11/05/2021</div>					



PALM BEACH APP CON
124.6 317.4
PBI D-ATIS
123.75



NOTE: RADAR required.
NOTE: Jet aircraft only.
NOTE: DME required.

NOTE: Chart not to scale.

ARRIVAL ROUTE DESCRIPTION

MELBOURNE TRANSITION (MLB.STOOP1): From over MLB VOR/DME on MLB R-159 to STOOP.
ORMOND BEACH TRANSITION (OMN.STOOP1): From over OMN VORTAC on OMN R-157 to STOOP.

LANDING ALL AIRPORTS: From STOOP on PALM BEACH VORTAC (PBI) R-359 to cross PBI VORTAC at 6000. Expect RADAR vectors.