

Flight Procedures Cover Page	Task Action: P-NOTAM	Task Type: IAP	Estimated Chart Date: 09/08/2022	APWS Task ID: BA2193482954452FA6A28E38ABF5A190	APWS Project ID: 5A72E5BF9CAC4F3483D52ADC69FE7CA0
Procedure: RNAV (RNP) Z RWY 33L AMDT 3B		Enroute: NO	Specialist: Jackson, Nicholas		Agreement Number:
Airport ID: KBWI			Airport City: BALTIMORE		State: MD
Facility ID:	Facility Type:	Flight Inspection Remark Type:			
<div>Procedure Comments:</div> <div>CANCEL FDC NOTAM #2/7518</div> <div>UPDATE PBN NOTE AND AIRPORT ELEVATION.</div> <div>CONTACT: DONALD LANIER, 405.954.8242</div> <div>04/13/2022</div> <div>QUALITY 14 CHECKED</div> <div>QUALITY 38 CHECKED</div>					

APP CRS
335°

Rwy Idg	8301
TDZE	143
Apt Elev	146

RNAV (RNP) Z RWY 33L

BALTIMORE/WASHINGTON INTL THURGOOD MARSHALL (BWI)

RNP AR APCH.

T For uncompensated Baro-VNAV systems, procedure NA below -12°C or above 54°C. For inop ALS, increase RNP 0.30 all Cats visibility to RVR 6000.

MALSR



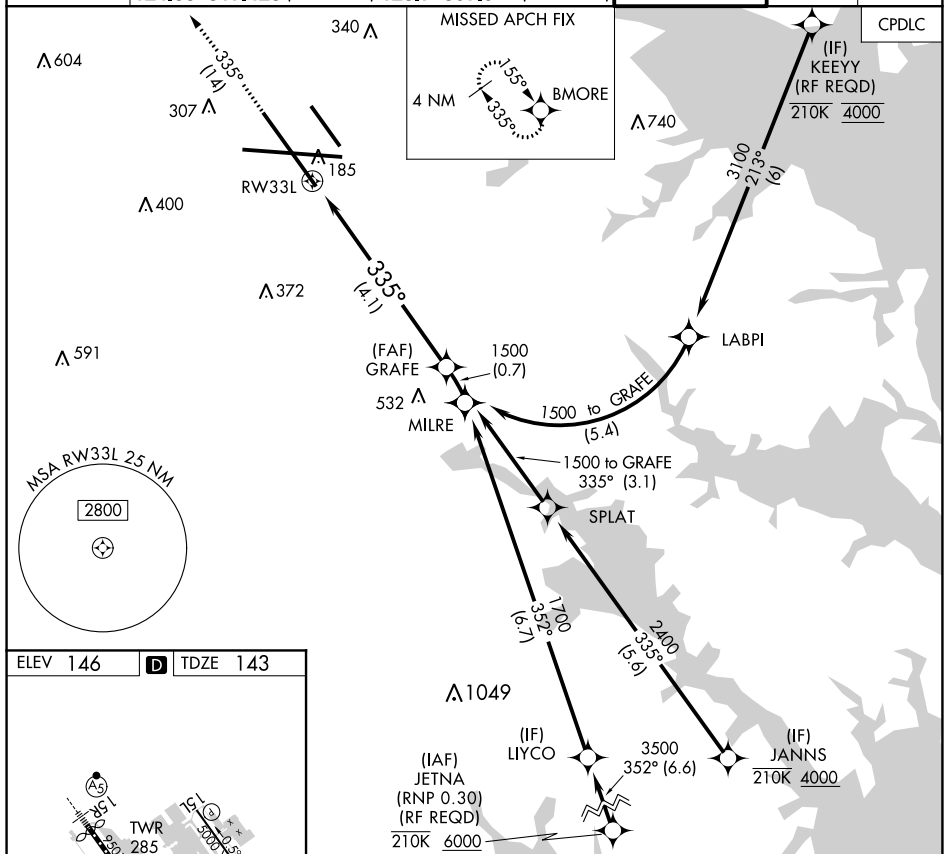
MISSED APPROACH: Climb to 3000 on track 335° to BMORE and hold.

D-ATIS
115.1 127.8

POTOMAC APP CON					
119.0	282.275	(020°-100°)	119.7	290.475	(131°-180°)
124.55	317.425	(101°-130°)	128.7	307.9	(181°-019°)

BALTIMORE TOWER
119.4 257.8

GND CON
121.9

CLNC DEL
118-05


ELEV 146

D TDZE 143

Diagram illustrating the HIRL (High Intensity Runway Lighting) system for Runway 33L, showing the layout of Runways 10, 15L, 15R, and 33L, and the associated lighting components (TDZ/CL, REIL, HIRL).

Key features and labels in the diagram:

- Runway 33L:** The primary runway shown, with a heading of 335° to RW33L.
- Runway 10:** A parallel runway to the left of Runway 33L.
- Runway 15L and 15R:** Runways intersecting Runway 33L.
- Lighting Components:**
 - TDZ/CL Rwy 10 and 33L:** Touchdown/Centerline lights for Runways 10 and 33L.
 - REIL Rwy 15L and 33R:** Runway End Identifier Lights for Runways 15L and 33R.
 - HIRL all Rwy:** High Intensity Runway Lighting for all runways.
- Other Labels:**
 - TWR 285:** Tower location and elevation.
 - 33° UP:** Direction of the runway.
 - 10503 x 150:** Dimensions of a specific area.
 - 3300 x 150:** Dimensions of another specific area.
 - 33L, 33R, 10, 15L, 15R:** Runway identifiers.

3000 ↑ tr 335°	BMORE 
----------------------	--

See planview for multiple IF locations.

VGSI and RNAV glidepath not coincident (VGSI Angle 3.00/TCH 72).

GRAFE

1500
GP 3.
TCH

CATEGORY

A

--	--

1

RNP 0.30 DA

196/35 353 (400-5%)

AUTHORIZATION REQUIRED

Baltimore, Maryland

Amdt 3A 30JAN20

BALTIMORE/WASHINGTON INTL THURGOOD MARSHALL (BWT)

39°11'N-76°40'W

RNAV (RNP) Z RWY 33L

NE-3, 24 MAR 2022 to 21 APR 2022