

Flight Procedures Cover Page	Task Action: FLIGHT CHECK	Task Type: IAP	Estimated Chart Date: 10/02/2025	APWS Task ID: BA15B0D196DF41BFBF847E489890C6DE	APWS Project ID: E4B9341927A24B90949052E6DA860165
Procedure: ILS OR LOC RWY 5 AMDT 1		Enroute: NO	Specialist: Taylor, Jantzen		Agreement Number:
Airport ID: KSME			Airport City: SOMERSET		State: KY
Facility ID:	Facility Type:	Flight Inspection Remark Type: New FC Slot			
<div>Procedure Comments: ACTIVE DATA USED FOR AIRPORT, RUNWAYS, AND NAVAIDS CONTACT RAKE MCGRAW: AJV-A422, 405.954.8711</div> <div><div>QUALITY 38 CHECKED</div><div>QUALITY 34 CHECKED</div></div>					

<b>FIPC BASIC FORM</b>									
<b>PROCEDURE:</b> ILS OR LOC RWY 5 AMDT 1			<b>AIRPORT NAME:</b> LAKE CUMBERLAND RGNL			<b>AIRPORT ID:</b> KSME		<b>SPECIAL CONTROL NO:</b> AP-05-027-25	
<b>FAC ID:</b> SME		<b>CITY:</b>				<b>ST:</b> KY		<b>ORIG CHART DATE:</b> 10/02/2025	
<b>DFL TYPE:</b> PROC/A	<b>THIRD PARTY:</b> <input type="checkbox"/> YES	<b>EST. TIME ON SITE:</b> 0.4	<b>REIMB. NUMBER:</b>		<b>PTS TASK ID:</b> BA15B0D196DF41BFBF847E489890C6DE				
<b>PREFLIGHT NOTES</b>									
<b>REVIEWER:</b>						<b>DATE:</b>			
<b>COMMENTS:</b>						<b>CHECK ONE:</b> <input type="checkbox"/> FLT CK REQ <input type="checkbox"/> NFCR <input type="checkbox"/> REJECT			
								<b>YES</b>	<b>NO</b>
						<b>CPV COMPLETE?</b>		<b>X</b>	
<b>PROCEDURE RESULTS</b>									
<b>INSPECTION DATE:</b> 05/21/2025		<b>CREW #:</b> VN400	<b>N #:</b> N66	<b>INSTRUMENT PROCEDURE STATUS:</b> <input checked="" type="checkbox"/> SAT <input type="checkbox"/> SAT W/CHANGES <input type="checkbox"/> UNSAT			<b>ARINC CODING:</b> <input type="checkbox"/> SAT <input type="checkbox"/> SAT/GOLD <input type="checkbox"/> UNSAT		
<b>FLIGHT INSPECTOR SIGNATURE:</b> michael s miller @ 05/21/2025 17:01			<b>PRINTED NAME:</b> MILLER, MICHAEL SCOTT					<b>NOTAM INITIATED?</b> <input type="checkbox"/> YES <input checked="" type="checkbox"/> NO	
<b>FLIGHT INSPECTOR REMARKS:</b>									
<b>IN-FLIGHT OBSTACLE REPORT</b>									
<b>OBSTRUCTION ID #:</b>		<b>COORDINATES OR LOCATION:</b>		<b>GNSS ALTITUDE (MSL):</b>		<b>BAROMETRIC ALTITUDE (MSL):</b>		<b>HEIGHT ABOVE GROUND LEVEL:</b>	

LOC/DME I-SME	APP CRS	Rwy Idg	5287
109.3	048°	TDZE	927
Chan 30		Apt Elev	927

**OLD**

# ILS or LOC RWY 5

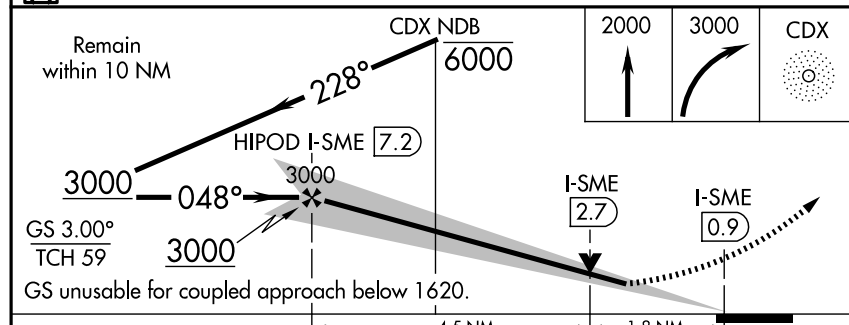
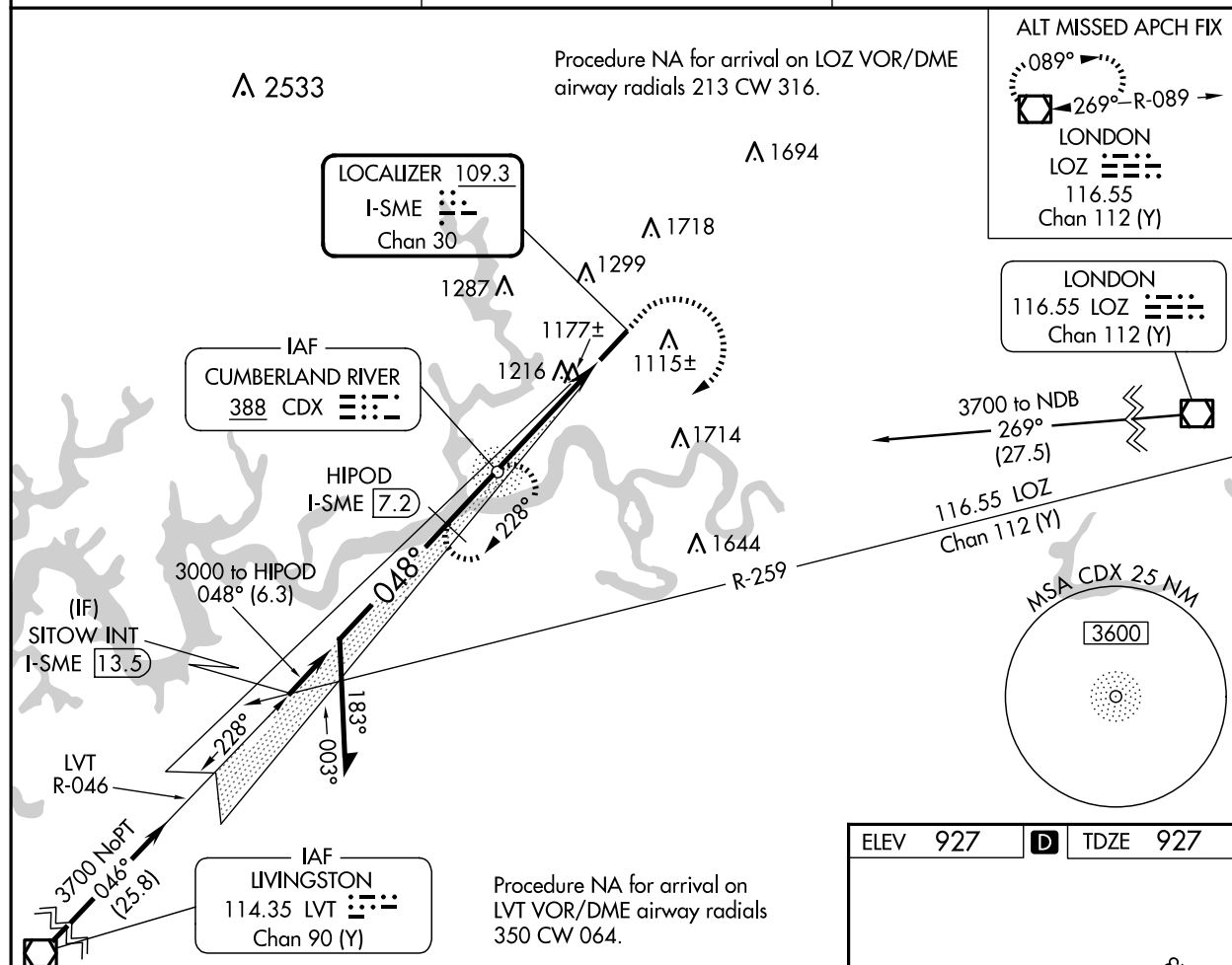
LAKE CUMBERLAND RGNL (SME)

DME required. ADF required.

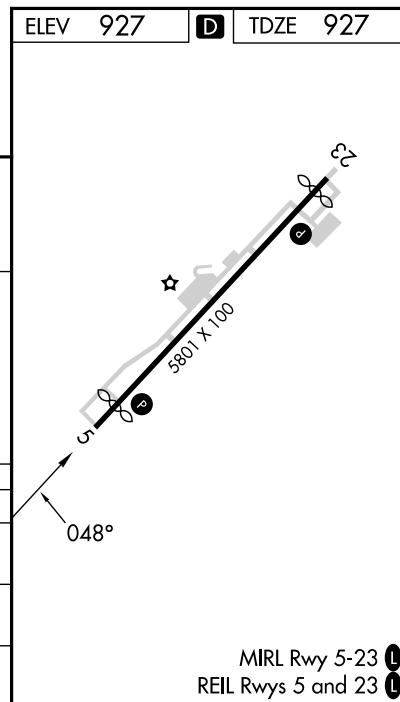
**⚠** Rwy 5 helicopter visibility reduction below  $\frac{3}{4}$  SM NA. When local altimeter setting not received, use Monticello altimeter setting and increase S-ILS 5 DA to 1526 feet and all visibilities  $\frac{1}{8}$  SM. Increase all MDAs 60 feet and S-LOC 5 visibility Cat C/D  $\frac{1}{8}$  SM, and Circling visibility Cat B  $\frac{1}{4}$  SM. VDP NA when using Monticello altimeter setting.

**MISSED APPROACH:** Climb to 2000 then climbing right turn to 3000 direct CDX NDB and hold, continue climb-in-hold to 3000.

AWOS-3 120.05	INDIANAPOLIS CENTER 124.625 371.925	UNICOM 122.8 (CTAF) <b>1</b>
------------------	--	---------------------------------



CATEGORY	A	B	C	D
S-ILS 5	1482-1 $\frac{5}{8}$	555 (600-1 $\frac{5}{8}$ )		
S-LOC 5	1540-1 613 (700-1)	1540-1 $\frac{3}{4}$ 613 (700-1 $\frac{3}{4}$ )		
CIRCLING	1620-1 693 (700-1)	1720-1 793 (800-1)	2100-3 1173 (1200-3)	



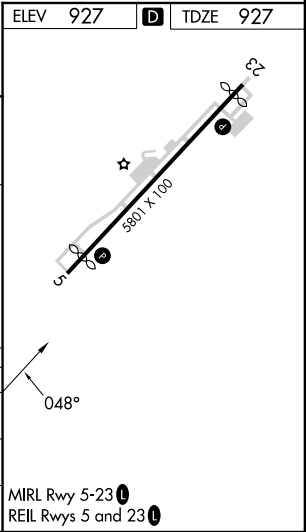
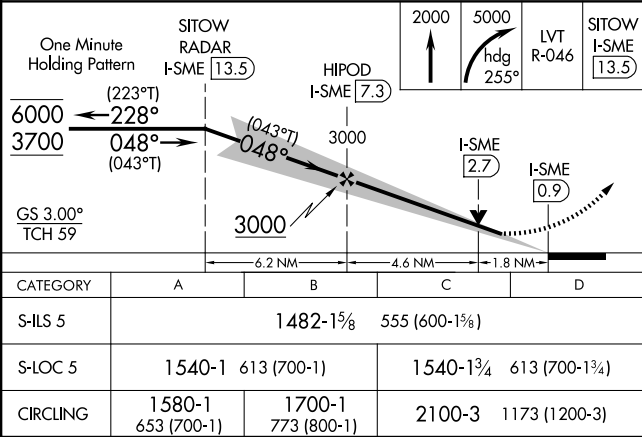
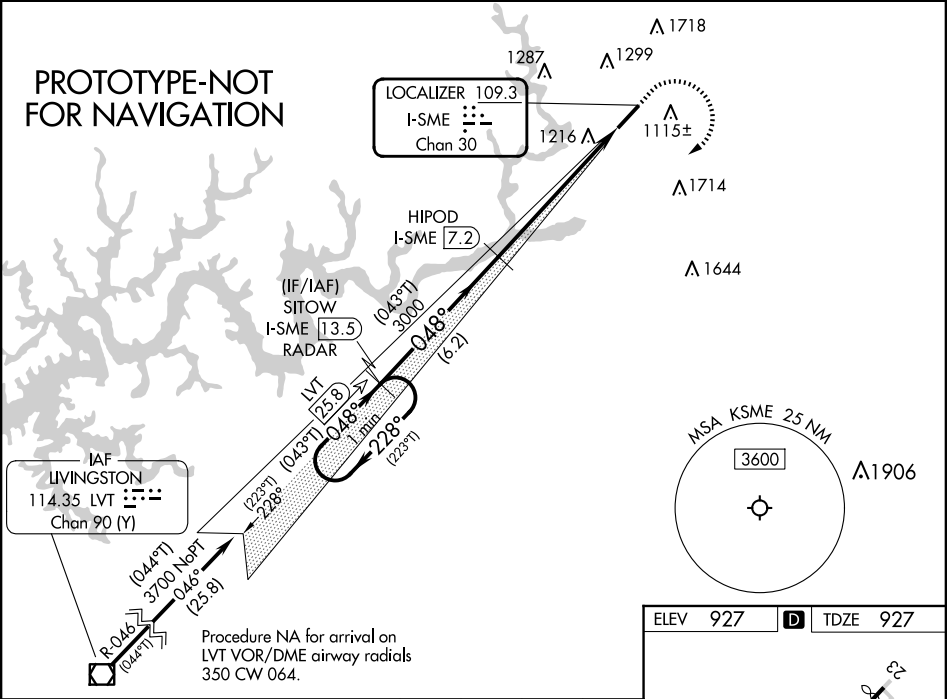
SE-1, 20 FEB 2025 to 20 MAR 2025

SE-1, 20 FEB 2025 to 20 MAR 2025

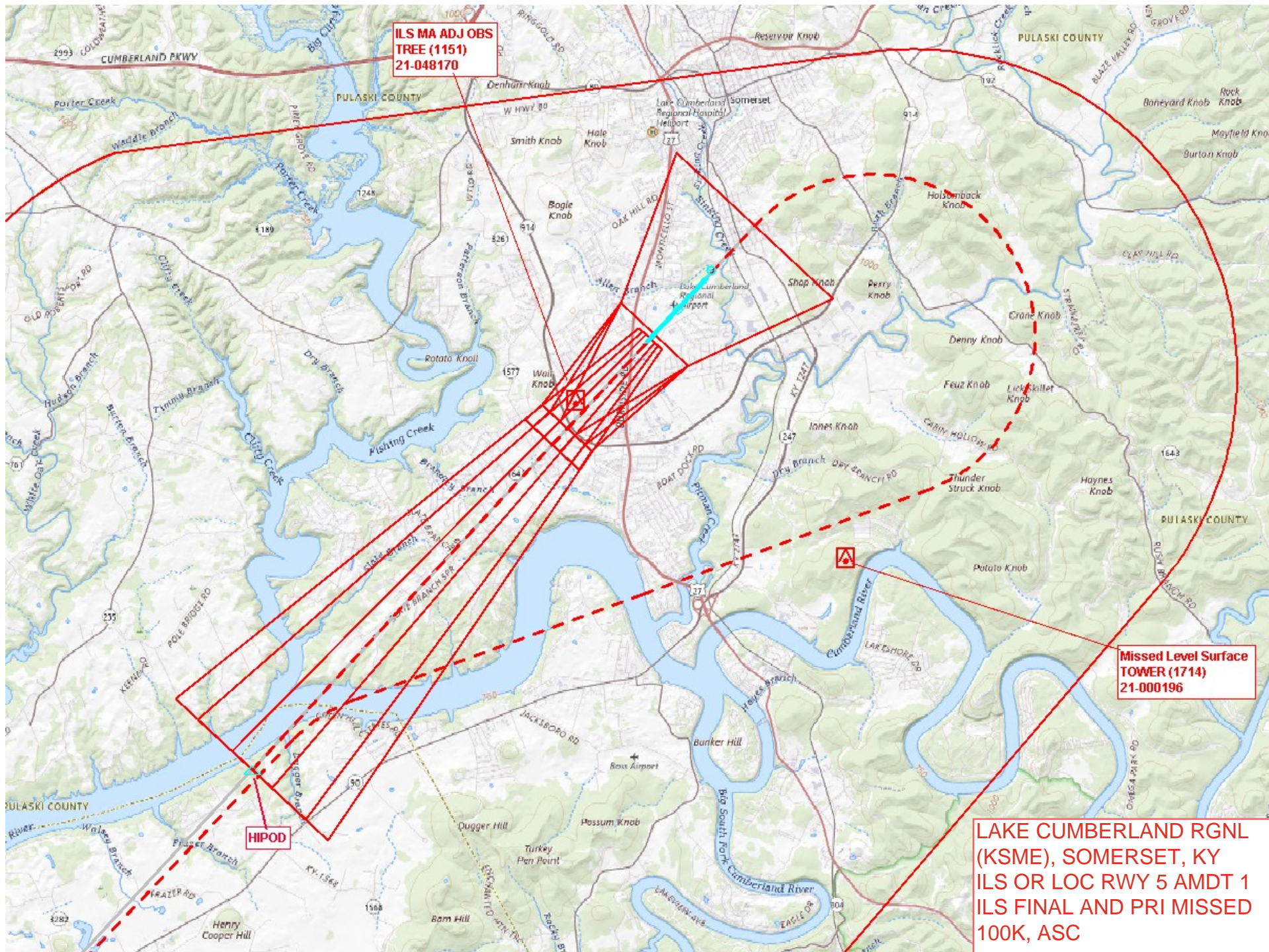
LOC/DME I-SME <b>109.3</b> Chan <b>30</b>	APP CRS <b>048°</b>	Rwy Ldg TDZE Apt Elev <b>5287</b> <b>927</b> <b>927</b>
---	------------------------	--

ILS or LOC RWY 5  
LAKE CUMBERLAND RGNL (SME)

DME required. ▼ Rwy 5 helicopter visibility reduction below ¾SM NA. VDP NA when using EKG altimeter setting. When local altimeter setting not received, use EKG altimeter setting and increase S-ILS 5 DA to 1526 feet and all visibilities ½SM. Increase all MDAs 60 feet and S-LOC 5 visibility Cat C/D ½SM; and Circling visibility Cat B ¾SM. GS unusable for coupled approach below 1620. ▲			MISSED APPROACH: Climb to 2000 then climbing right turn to 5000 on heading 255° and on LVT VOR/DME R-046 to SITOW/13.45 DM/RADAR and hold, continue climb-in-hold to 5000.
AWOS-3 <b>120.05</b>	INDIANAPOLIS CENTER <b>124.625 371.925</b>	UNICOM <b>122.8</b> (CTAF) <b>0</b>	

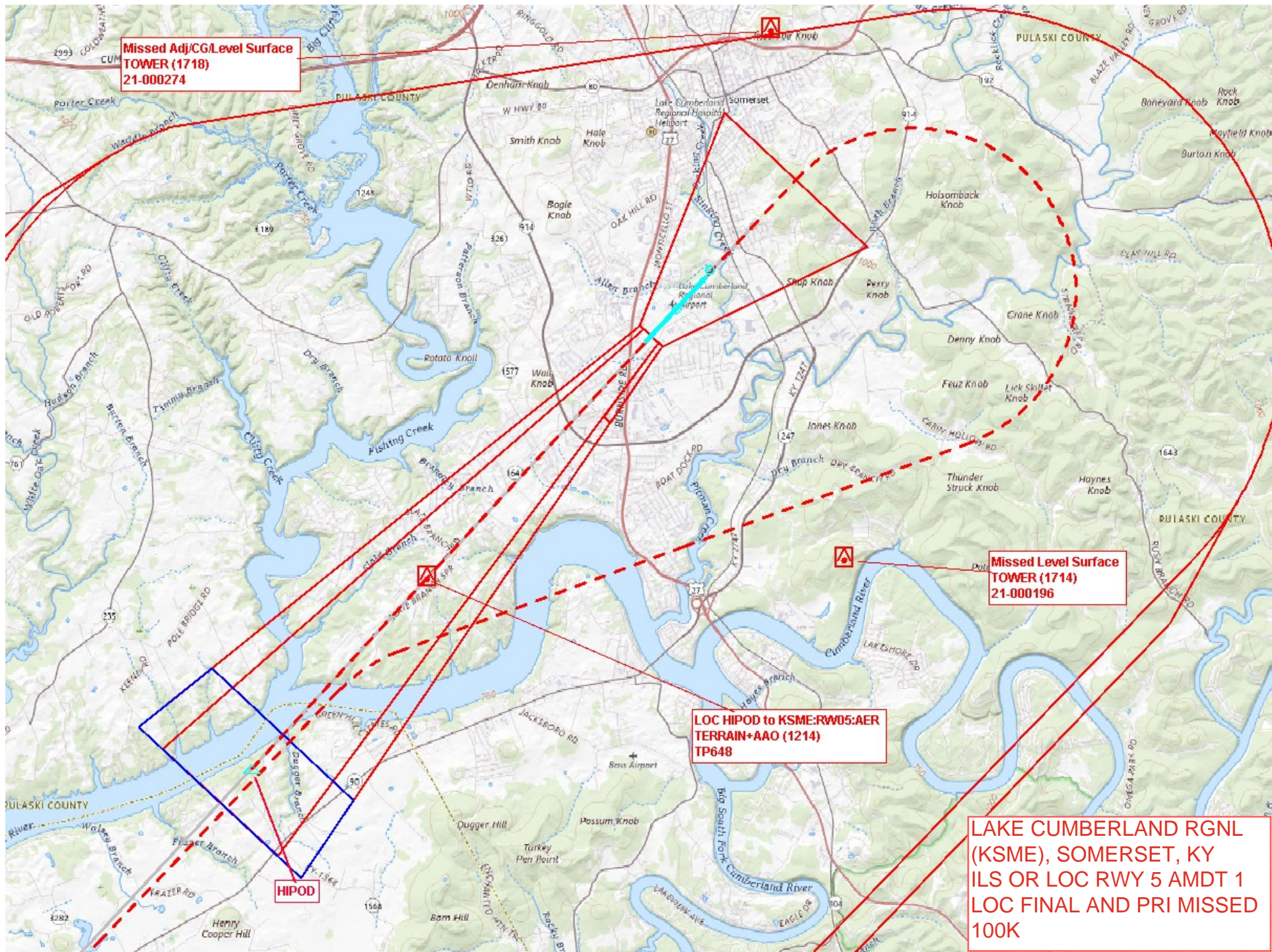






LAKE CUMBERLAND RGNL  
(KSME), SOMERSET, KY  
ILS OR LOC RWY 5 AMDT 1  
ILS FINAL AND PRI MISSED  
100K, ASC





Missed Adj/CG/Level Surface  
TOWER (1718)  
21-000274

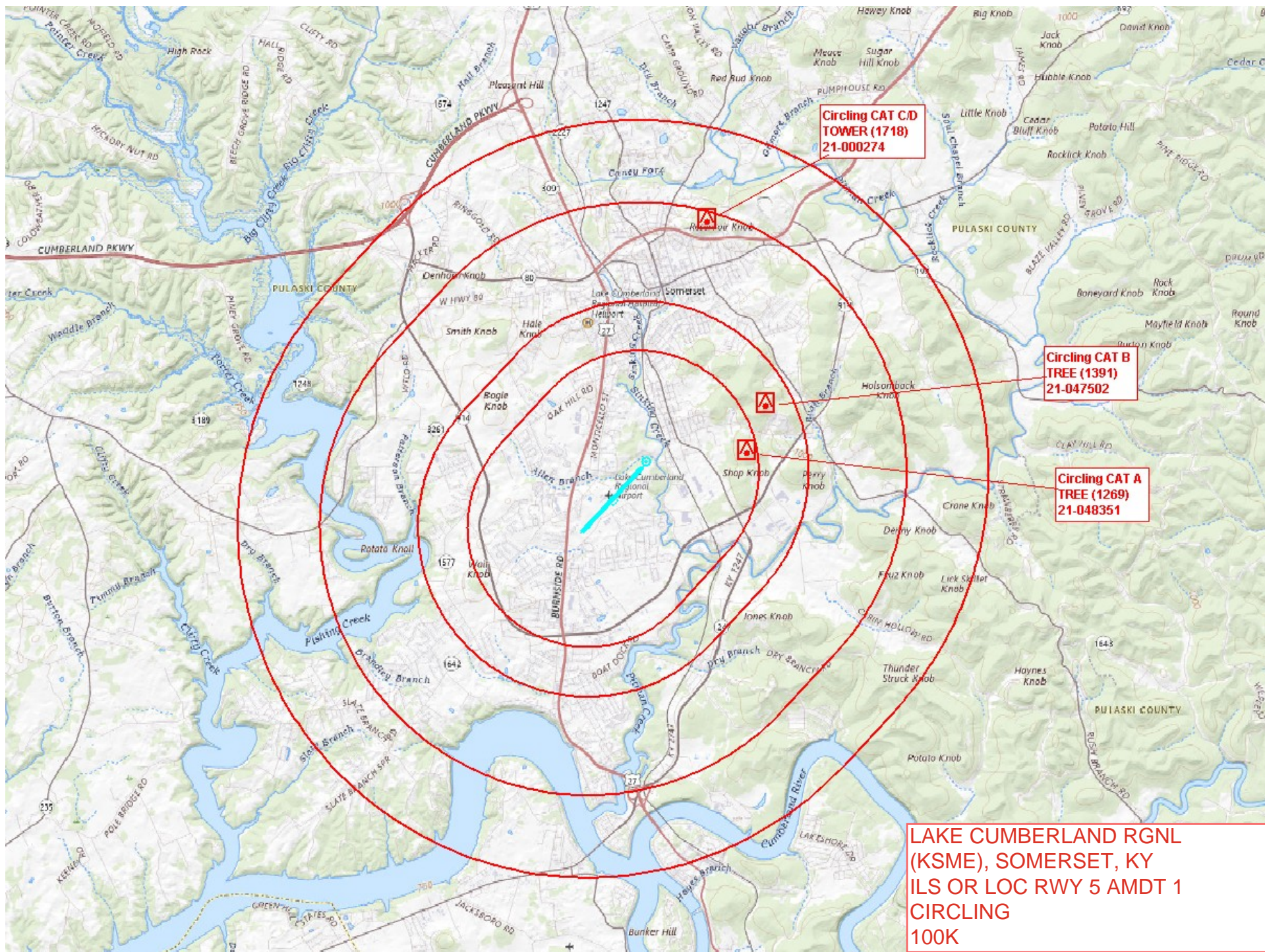
Missed Level Surface  
TOWER (1714)  
21-000196

LOC HIPOD to KSME:RW05:AER  
TERRAIN+AAO (1214)  
TP648

LAKE CUMBERLAND RGNL  
(KSME), SOMERSET, KY  
ILS OR LOC RWY 5 AMDT 1  
LOC FINAL AND PRI MISSED  
100K

HIPOD





LAKE CUMBERLAND RGNL  
(KSME), SOMERSET, KY  
ILS OR LOC RWY 5 AMDT 1  
CIRCLING  
100K



Missed Adj/CG Level Surface  
TOWER (1718)  
21-000274

HIPOD

Missed Level Surface  
TOWER (1714)  
21-000196

SITOW

LOC HIPOD to KSME:RW05:AER  
TERRAIN+AAO (1214)  
TP648

Intermediate  
SITOW to HIPOD  
TERRAIN+AAO (1703)  
TP1325608

HIL MISSED HOLD  
200KT PAT  
SITOW TOWER (1802)  
21-000490

LVT:VOR/DME to SITOW  
IAF from LVT Missed HOLD CIH OBS  
TERRAIN+AAO (1992)  
TP1401522

LAKE CUMBERLAND RGNL  
(KSME), SOMERSET, KY  
ILS OR LOC RWY 5 AMDT 1  
FULL PROCEDURE  
500K, ASC

