

Flight Procedures Cover Page	Task Action: Cancellation	Task Type: IAP	Estimated Chart Date: 10/02/2025	APWS Task ID: B9DA575AC6384F1C962DAE9DF96651AA	APWS Project ID: CCA8406CAE7D43B4955C85E191DF0330
Procedure: NDB RWY 36 5B		Enroute: NO	Specialist: Bruce, Richard		Agreement Number:
Airport ID: KDRI			Airport City: DE RIDDER		State: LA
Facility ID: DXB	Facility Type: NDB	Flight Inspection Remark Type:			
<div>Procedure Comments:</div> <div>DXB NDB PLANNED TO BE DECOMMISSIONED.</div> <div>CANCELS FDC NOTAM 5/1733.</div> <div>CONTACT RAKE MCGRAW, AJV-A422, (405) 954-8711.</div> <div>QUALITY 39 CHECKED</div>					

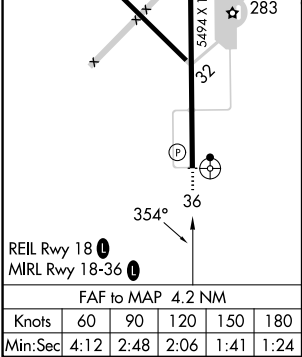
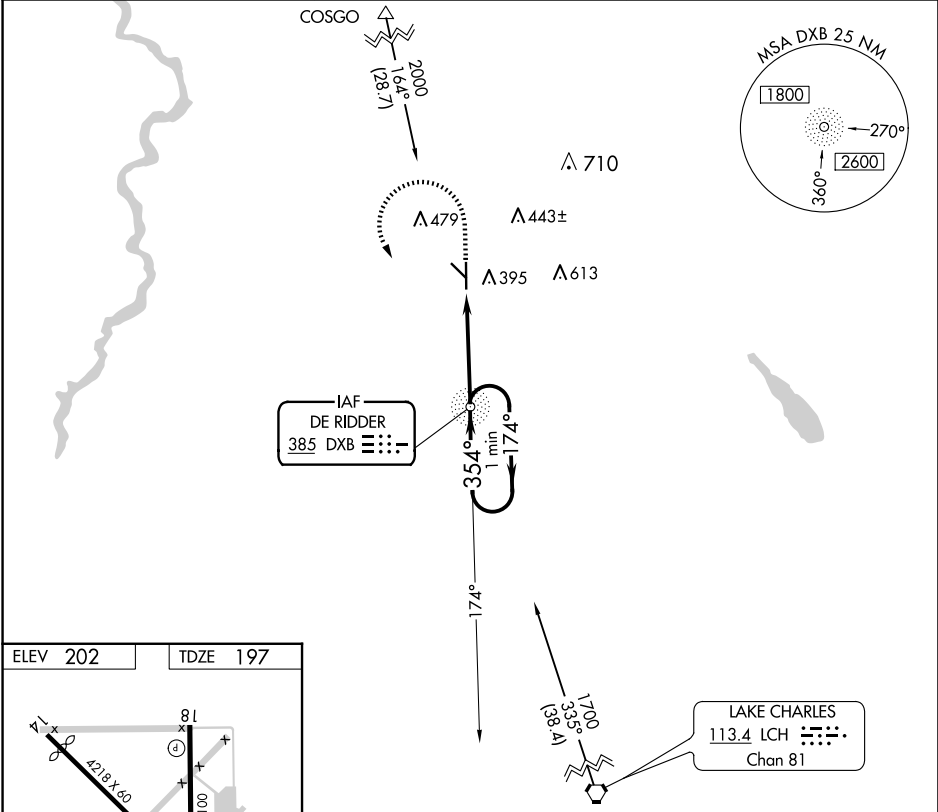
NDB DXB	APP CRS	Rwy Idg	5494
385	354°	TDZE	197
		Apt Elev	202

INFO ONLY

NDB RWY 36
BEAUREGARD RGNL (DRI)

<p>▼ NA</p> <p>Inoperative table does not apply. Visibility reduction by helicopters NA. When local altimeter setting not received, use Fort Polk altimeter setting and increase all MDAs 60 feet and S-36 visibility Cat D 1/2 SM and Circling Cats C/D 1/4 SM.</p>	<p>ODALS</p> <p>⬆️</p>	<p>MISSED APPROACH: Climb to 1000 then climbing left turn to 1700 direct DXB NDB and hold.</p>
--	------------------------	--

AWOS-3PT 118.225	POLK APP CON 123.7 261.3	UNICOM 122.8 (CTAF) 0
---------------------	-----------------------------	--------------------------



1000	1700	DXB	DXB NDB	One Minute Holding Pattern
↑	↶	⊙	⊙	
1700		174° →	1700	← 354°
354°		↘	1700	↗
3.25° TCH 40		VGSI and descent angles not coincident (VGSI Angle 3.00/TCH 50).		
4.2 NM				
CATEGORY	A	B	C	D
S-36	700-1	503 (500-1)	700-1½	503 (500-1½)
CIRCLING	720-1	518 (600-1)	780-1½	1000-2½
			578 (600-1½)	798 (800-2½)

SC-4, 12 JUN 2025 to 10 JUL 2025

SC-4, 12 JUN 2025 to 10 JUL 2025