

Flight Procedures Cover Page	Task Action: FLIGHT CHECK	Task Type: SID	Estimated Chart Date: 03/21/2024	APWS Task ID: B9D138FA88D7491784CB1A4F40467FF8	APWS Project ID: 772284155ACD49589D95CA339A72BC85
Procedure: SID TIDES ONE (RNAV) SARASOTA/BRADENTON INTL FL		Enroute: YES	Specialist: Johnsen, Daniel		Agreement Number:
Airport ID: KSRQ			Airport City: SARASOTA/BRADENTON		State: FL
Facility ID:	Facility Type:	Flight Inspection Remark Type: New FC Slot			
<div>Procedure Comments:</div> <div>New procedure using active data for KSRQ and KVNC airports and runways.</div> <div>Letter of Approval Request (1): CG Exceeding 500 ft/nm.</div> <div>ESV (1): LAKELAND (LAL) TACAN</div> <div>Contact Mike Garrity, AJV-A423, (405) 945-5602.</div> <div><div>QUALITY 20 CHECKED</div><div>QUALITY 9 CHECKED BEGUE</div></div>					

FIPC DME/DME FORM									
PROCEDURE: SID TIDES ONE (RNAV) SARASOTA/BRADENTON INTL FL				AIRPORT NAME: SARASOTA/BRADENTON INTL		AIRPORT ID: KSRQ		SPECIAL CONTROL NO: AG-11-138-23	
FAC ID: TIDES1			CITY: SARASOTA/BRADENTON			ST: FL		ORIG CHART DATE: 03/21/2024	
DFL TYPE: PROC/D		THIRD PARTY: <input type="checkbox"/> YES		EST. TIME ON SITE: 1.0		REIMB. NUMBER:		PTS TASK ID: B9D138FA88D7491784CB1A4F40467FF8	
PREFLIGHT NOTES									
REVIEWER:							DATE:		
COMMENTS:							CHECK ONE:		
							<input type="checkbox"/> FLT CK REQ <input type="checkbox"/> NFCR <input type="checkbox"/> REJECT		
									YES
							CPV COMPLETE?		X
PROCEDURE RESULTS									
INSPECTION DATE: 03/05/2024		CREW #: VN532		N #: N86		INSTRUMENT PROCEDURE STATUS: <input checked="" type="checkbox"/> SAT <input type="checkbox"/> SAT W/CHANGES <input type="checkbox"/> UNSAT		ARINC CODING: <input checked="" type="checkbox"/> SAT <input type="checkbox"/> SAT/GOLD <input type="checkbox"/> UNSAT	
FLIGHT INSPECTOR SIGNATURE: ryan caramanica @ 03/05/2024 15:29				PRINTED NAME: CARAMANICA, RYAN DANIEL				NOTAM INITIATED? <input type="checkbox"/> YES <input checked="" type="checkbox"/> NO	
FLIGHT INSPECTOR REMARKS:									
DME/DME STATUS: <input type="checkbox"/> SAT <input type="checkbox"/> UNSAT		SPECIALIST SIGNATURE:				PRINTED NAME:			
SPECIALIST REMARKS:									
IN-FLIGHT OBSTACLE REPORT									
OBSTRUCTION ID #:		COORDINATES OR LOCATION:		GNSS ALTITUDE (MSL):		BAROMETRIC ALTITUDE (MSL):		HEIGHT ABOVE GROUND LEVEL:	

TIDES ONE DEPARTURE (RNAV)

ATIS
124.375
SARASOTA TOWER ★
120.1 (CTAF) 256.8
CLNC DEL
118.25
TAMPA DEP CON
119.65 353.575
GND CON
121.9 273.6

RNAV 1 - DME/DME/IRU OR GPS. FROM PSTOL- GPS.

TOP ALTITUDE:
5000

RADAR REQUIRED FOR NON-GPS EQUIPPED AIRCRAFT.

TAKEOFF MINIMUMS

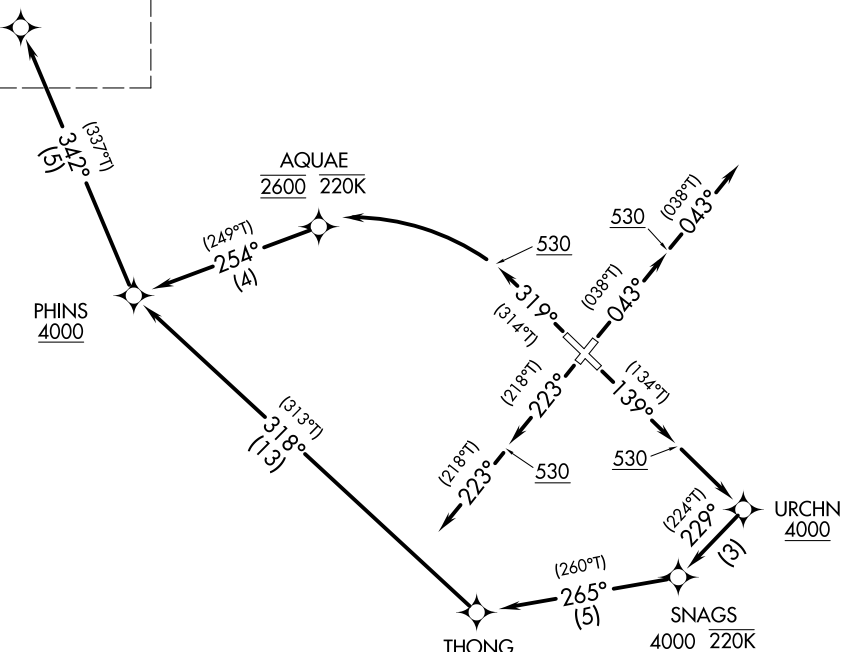
Rwys 4: Standard.

Rwy 14, 22, 32: Standard with minimum
climb of 500' per NM to 530.

See following page
for transition routes

TIDES
5000 250K

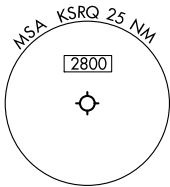
NOTE: Jet aircraft only.



PROTOTYPE-NOT FOR NAVIGATION
(CONTINUED ON FOLLOWING PAGE)

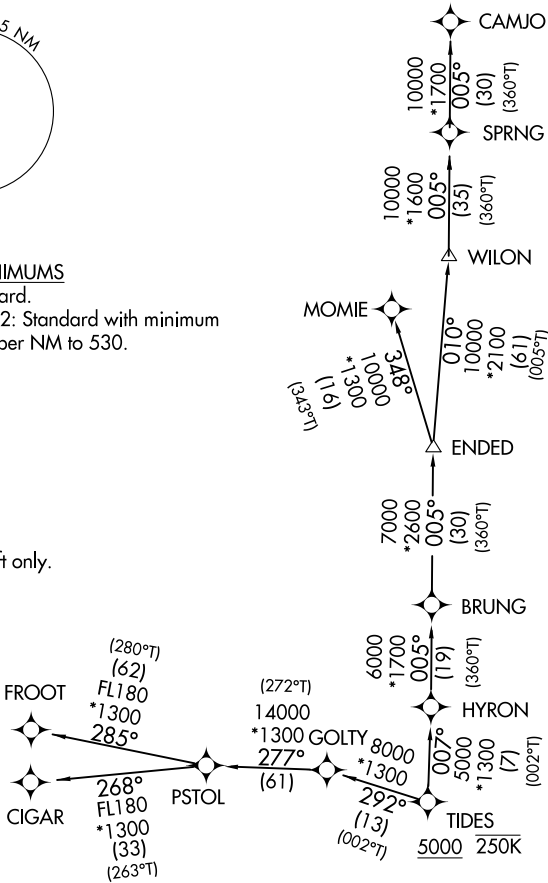
ATIS
124.375
SARASOTA TOWER ★
120.1 (CTAF) 256.8
CLNC DEL
118.25
TAMPA DEP CON
119.65 353.575
GND CON
121.9 273.6

RNAV 1 - DME/DME/IRU OR GPS. FROM PSTOL- GPS.	TOP ALTITUDE: 5000
RADAR REQUIRED FOR NON-GPS EQUIPPED AIRCRAFT.	



TAKEOFF MINIMUMS
Rwys 4: Standard.
Rwy 14, 22, 32: Standard with minimum
climb of 500' per NM to 530.

NOTE: Jet aircraft only.



PROTOTYPE-NOT FOR NAVIGATION
(CONTINUED ON FOLLOWING PAGE)



DEPARTURE ROUTE DESCRIPTION

TAKEOFF RWY 4: Climb on heading 043° to 530, then on heading 043° or as assigned by ATC, for radar vectors to PHINS, thence...

TAKEOFF RWY 14: Climb on heading 139° to 530, then direct URCHN to cross at or above 4000, then on track 229° to cross SNAGS at or above 4000 and at or below 220K, then on track 265° to THONG, then on track 318° to cross PHINS at or above 4000, thence...

TAKEOFF RWY 22: Climb on heading 223° to 530, then on heading 223° or as assigned by ATC, for radar vectors to PHINS, thence...

TAKEOFF RWY 32: Climb on heading 319 °to 530, then left turn direct AQUAE to cross at 2600 and at or below 220K, then on track 254° to cross PHINS at or above 4000, thence...

...on track 342° to cross TIDES at or above 5000 and at or below 250K, maintain 5000. Expect clearance to filed altitude within 10 minutes after departure.

- CAMJO TRANSITION (TIDES1.CAMJO)
- CIGAR TRANSITION (TIDES1.CIGAR)
- FROOT TRANSITION (TIDES1.FROOT)
- MOMIE TRANSITION (TIDES1.MOMIE)

PROTOTYPE-NOT FOR NAVIGATION



Federal Aviation Administration

Memorandum

Date: May 15, 2023

To: Christopher Hope, Manager, Flight Technologies and Procedures Division
THRU: Romana Wolf, Manager, Flight Procedures and Airspace Group

From: Bev Bordy, Manager, Instrument Flight Procedures Coordination Team, AJV-A45

Prepared by: Mark J. Dillon, Sr. ATC Specialist, NAVTAC CTR Support

Subject: Approval Request: Sarasota, FL (KSRQ) TIDES (RNAV) SID
RWY 14 Calculated Climb Gradient in excess of 500 ft/nm

FAAO 8260.46J para 2-1-1e(2)(b)2:

Calculate (but do not publish) the CG necessary to meet each minimum altitude restriction. Flight Procedures and Airspace Group's approval is required if the calculated CG exceeds 500 ft/NM (600 ft/NM for helicopters).

Formula 1-3-7. Required Climb Gradient		
CG _{term} = climb gradient termination altitude (feet)		
AC _{start} = starting altitude (feet) of the aircraft (e.g., DER elevation or SOC)		
D _o = dist. (NM) from AC _{start} to obstacle (primary) or point abeam obstacle (secondary)		
CG _{term}	4000	Calculate
AC _{start}	24.2	
D _o	7.59	
CG	523.770	Clear

The distance from the departure end of RWY 14 to waypoint URCHN is 7.59 nm with an altitude change of 3975.8 ft, resulting in 523.77 ft/nm calculated climb gradient. This design replicates existing departure control procedures and will replace the SRKUS4 (RNAV) SID. The demonstrated performance of current jet aircraft utilizing the KSRQ airport indicate compliance falls within normal operating parameters.

Request approval to publish KSRQ TIDES (RNAV) SID as designed.

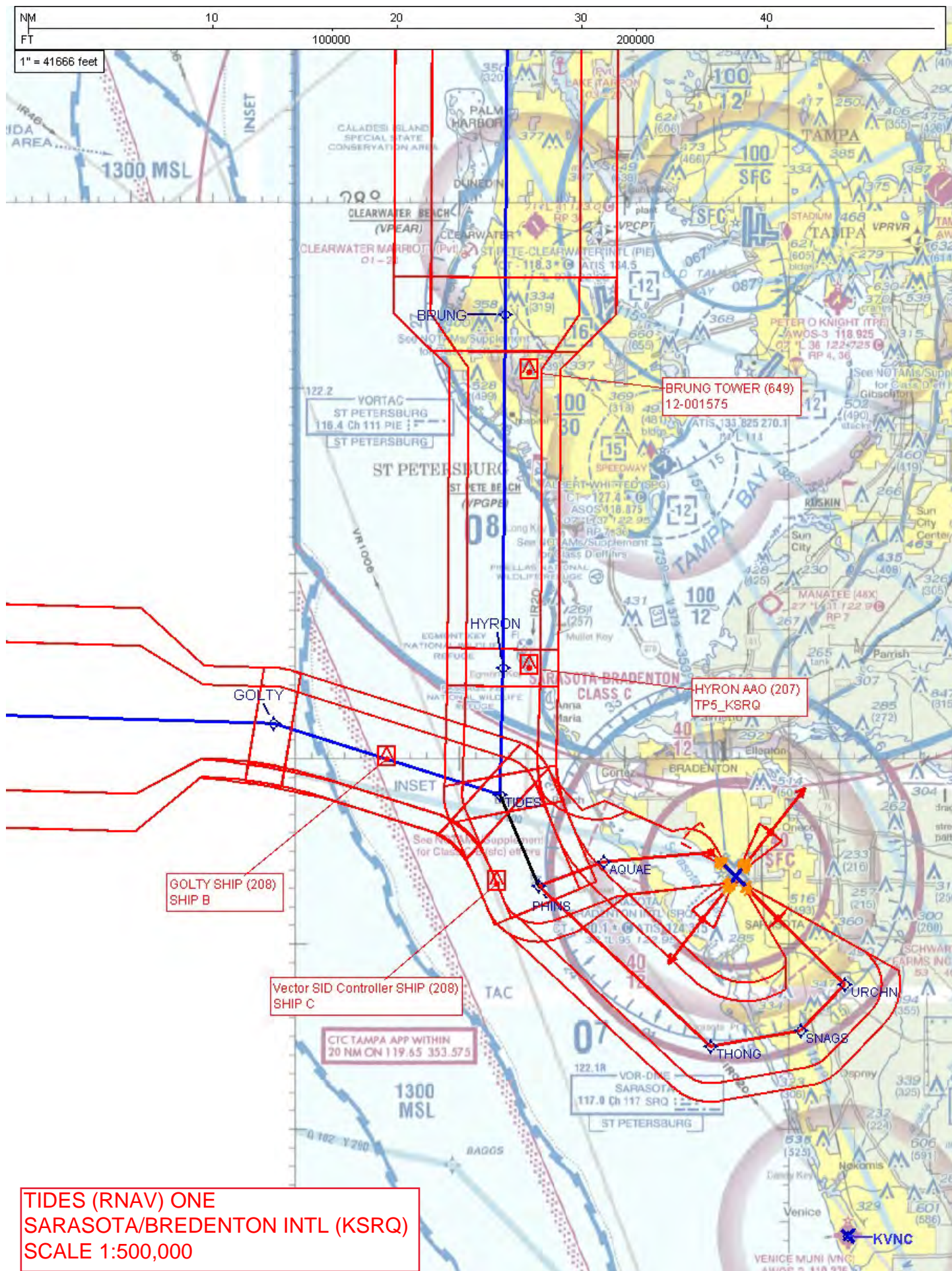
Reginald E Davis
Digitally signed by Reginald E Davis
Date: 2023.05.16 07:58:13 -04'00'

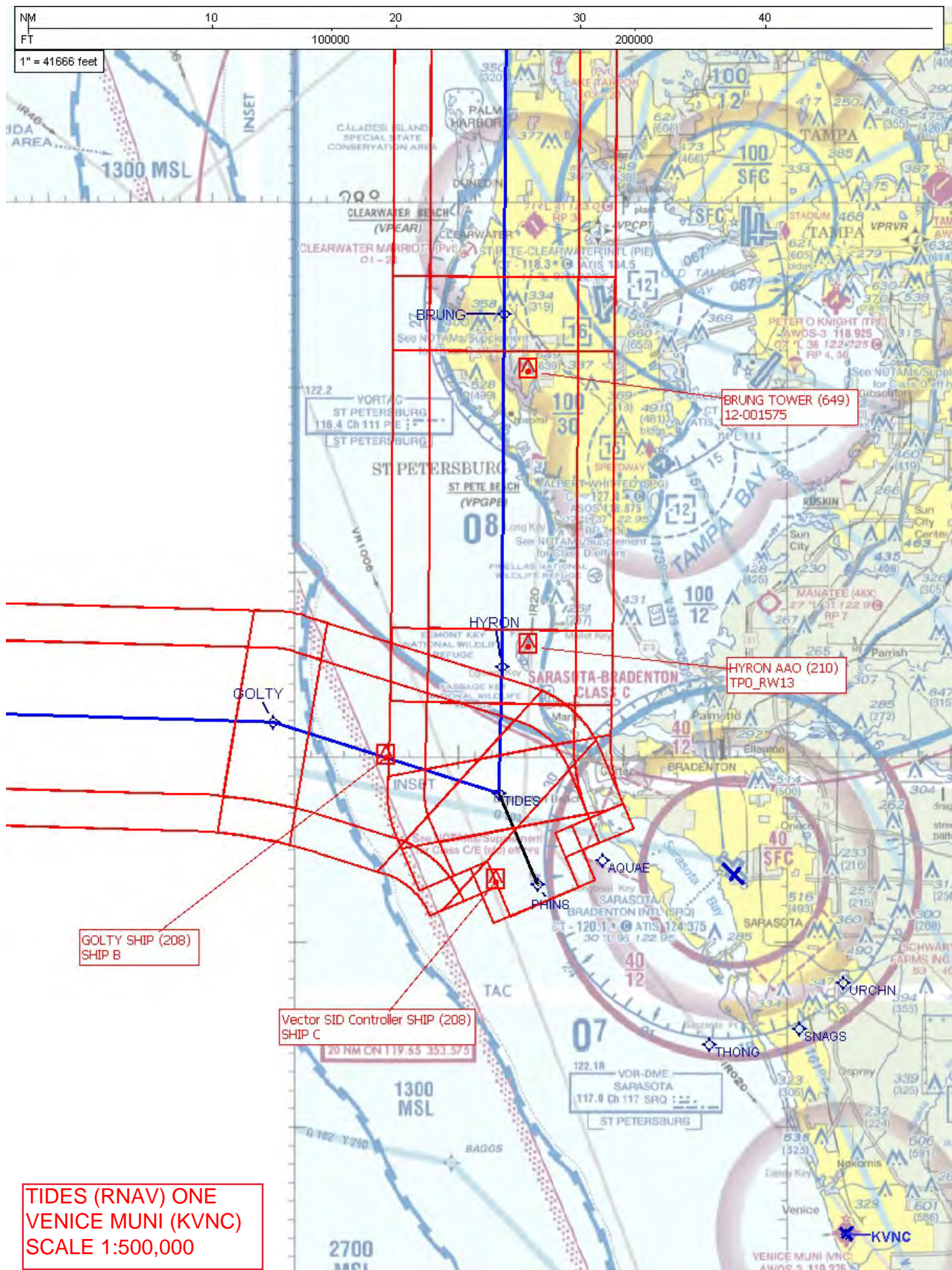
Reginald Davis

ESC OSG PBN Co-Lead Management

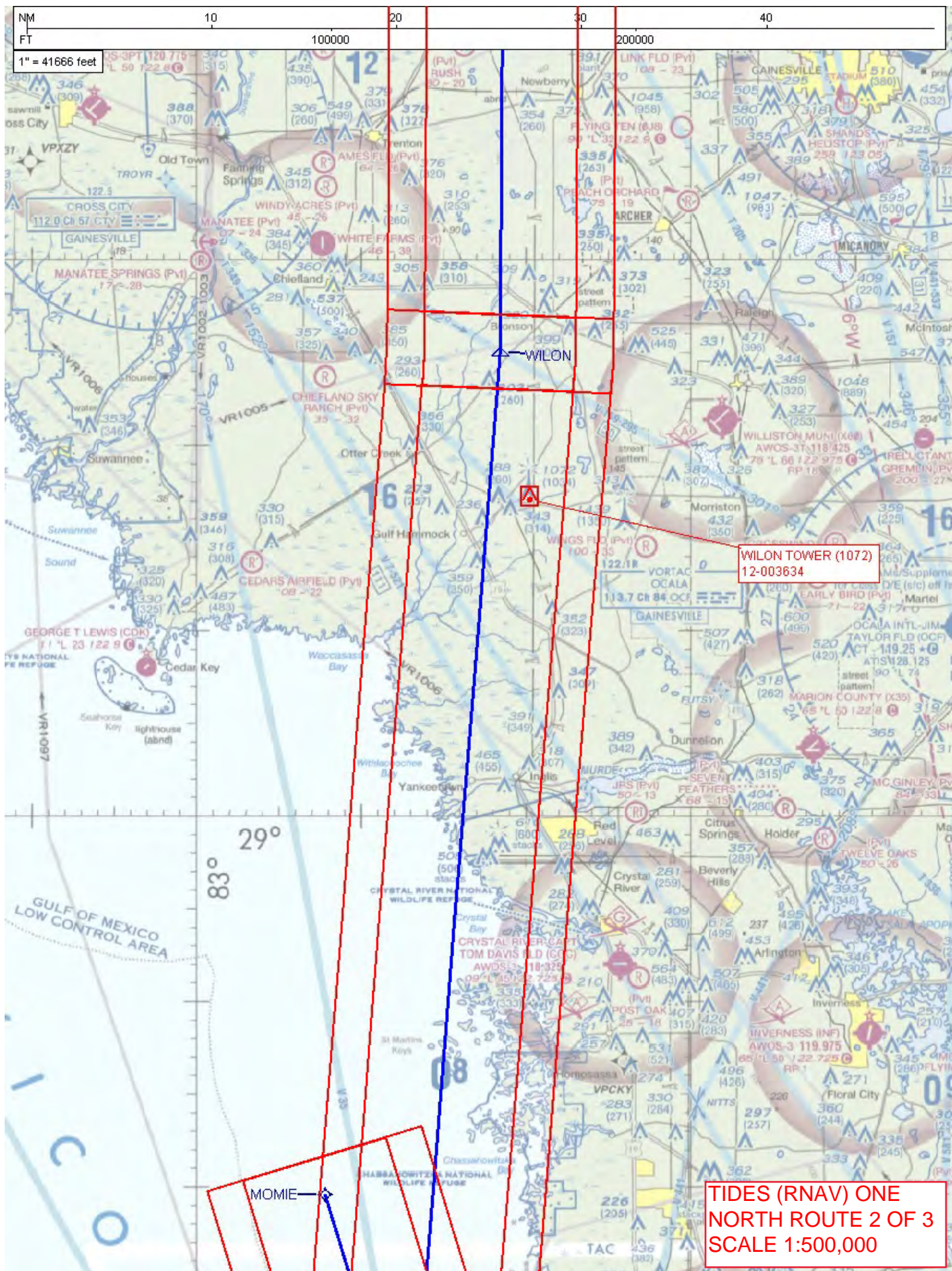
ESV Details

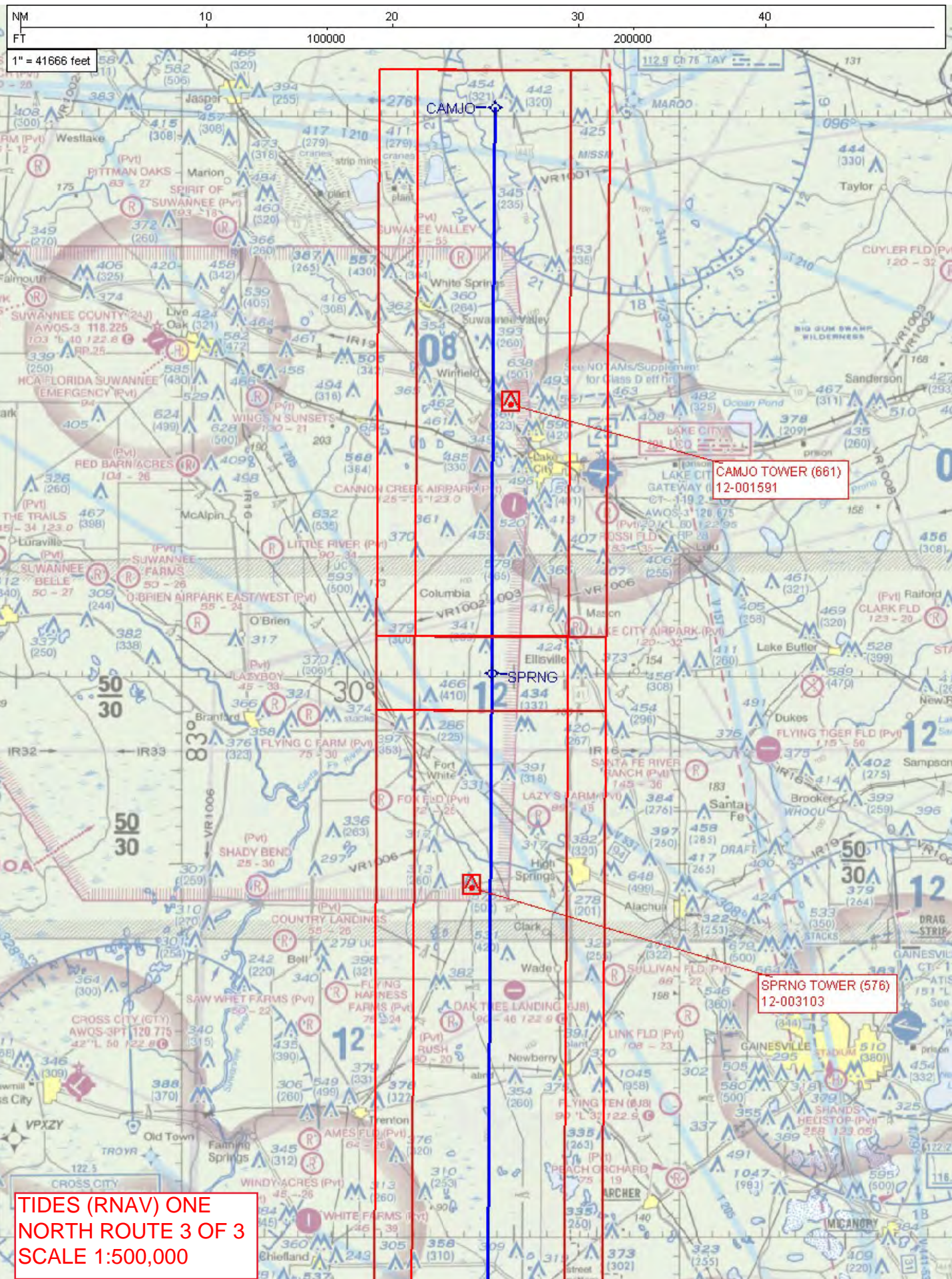
Originating Office :ESTRNSC		Airspace Docket Number :		Request Type :Establish		
Facility Data						
Chart Name:Lakeland		City:LAKELAND		Ident:LAL		State:FL
Type/Class: TACAN		Frequency: M1194		Reference Number: 23052818		
Extended Service Volume Data: (Requesting Officer)						
ESV ID	Radial 1	Radial 2	Distance	Minimum Altitude	Maximum Altitude	
FAA 704224 - 109	227	250	60	38	180	
Requirement: KSRQ, KVNC, TIDES RNAV SID, MITIGATE CRITICAL DME						
Signature:Dillon Mark		Routing Symbol:AJV-W21				Date:05/08/2023
Extended Service Volume Data: (FMO)						
ESV ID	Radial 1	Radial 2	Distance	Minimum Altitude	Maximum Altitude	Action Type
FAA 704224 - 109	227	250	60	38	180	APPROVE
Requirement/Remarks: KSRQ, KVNC, TIDES RNAV SID, MITIGATE CRITICAL DMEAPPROVED. FREQ. PROTECTION & FIELD STRENGTH. PENDING FLIGHT INSPECT @ REQUIRED. DIST. & MIN ALT..						
Signature:Demas Tariku		Routing Symbol:			Date:05/09/2023	
Extended Service Volume Data: (Super FMO)						
ESV ID	Radial 1	Radial 2	Distance	Minimum Altitude	Maximum Altitude	Action Type
FAA 704224 - 109	227	250	60	38	180	APPROVE
Requirement/Remarks: KSRQ, KVNC, TIDES RNAV SID, MITIGATE CRITICAL DMEAPPROVED. FREQ. PROTECTION & FIELD STRENGTH. PENDING FLIGHT INSPECT @ REQUIRED. DIST. & MIN ALT..						
Signature:Hughes Dennis		Routing Symbol:			Date:05/10/2023	
Extended Service Volume Data: (FIFO)						
ESV ID	Radial 1	Radial 2	Distance	Minimum Altitude	Maximum Altitude	Action Type
FAA 704224 - 109	227	250				
Requirement/Remarks:						
Signature:		Routing Symbol:			Date:	

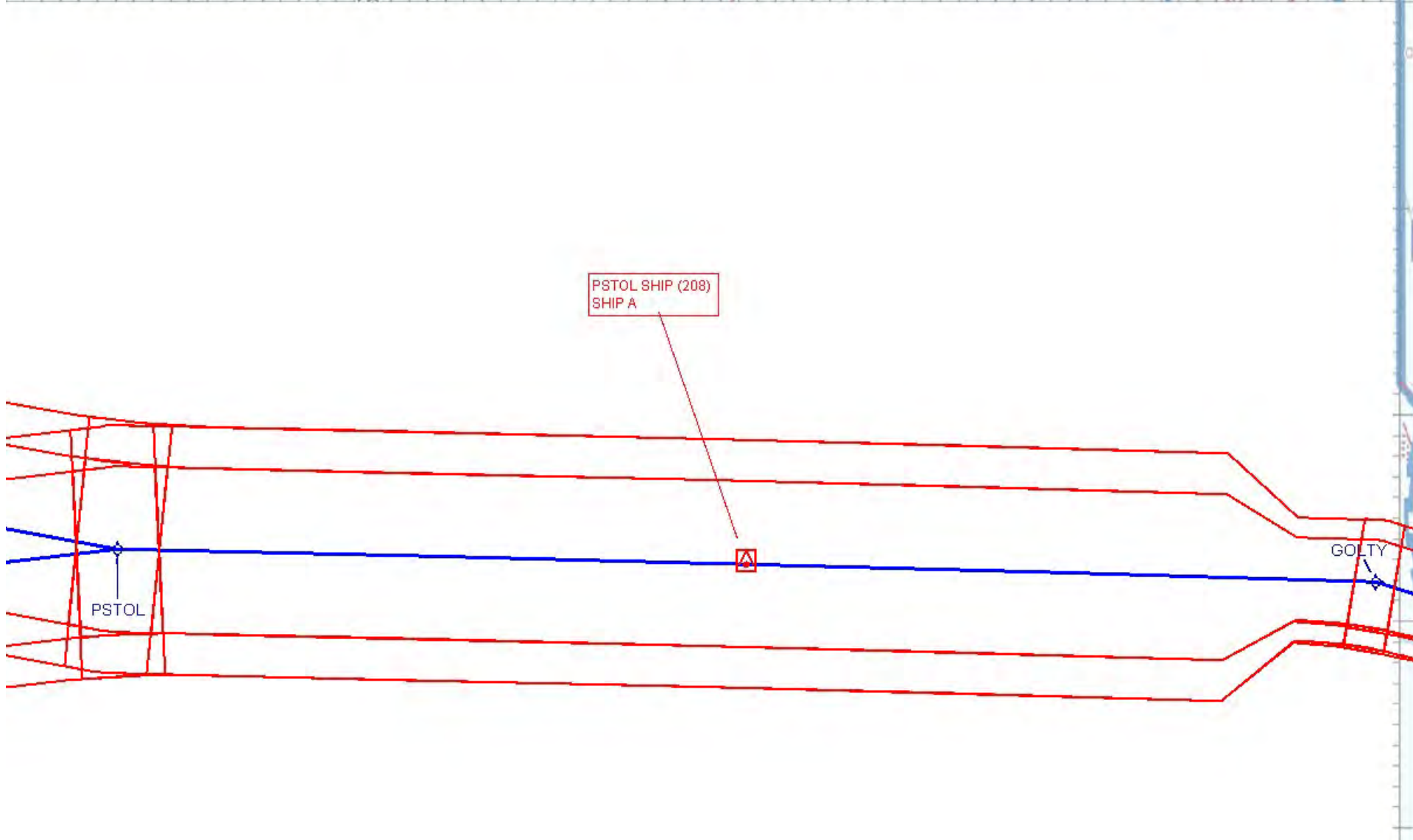
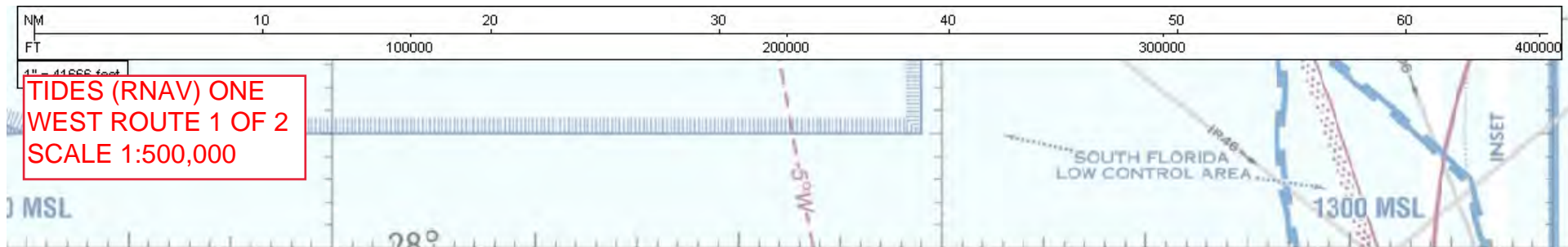


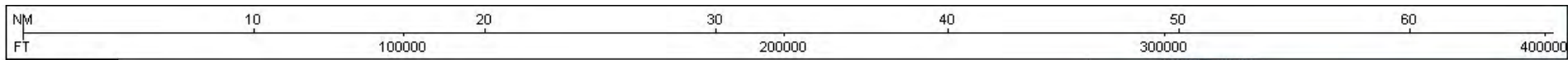






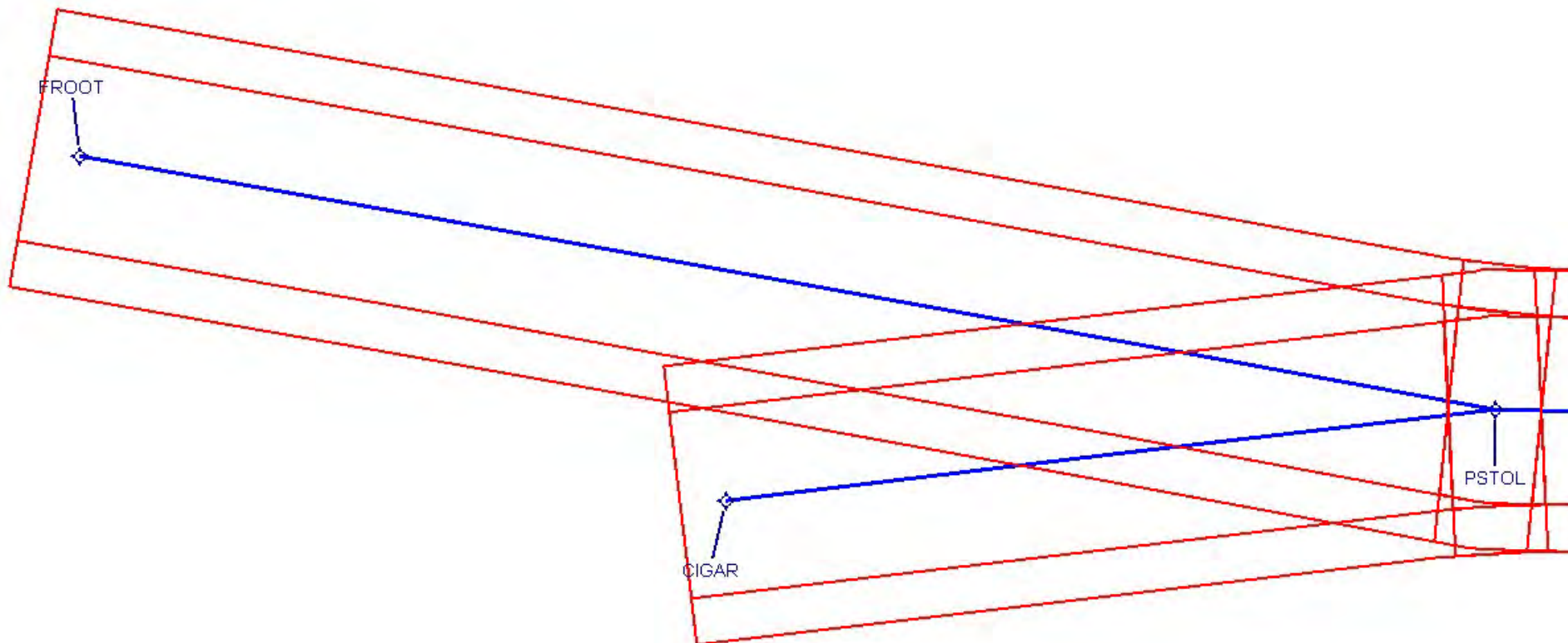
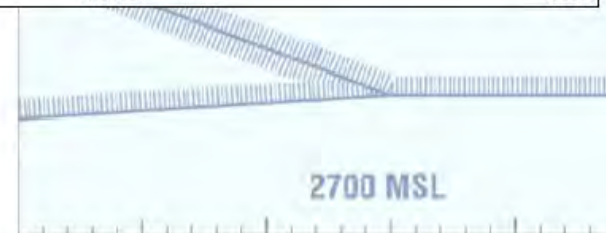


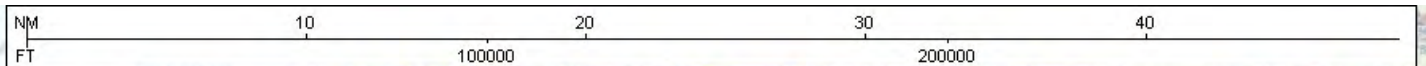




1" = 41,666 feet

TIDES (RNAV) ONE
WEST ROUTE 2 OF 2
SCALE 1:500,000



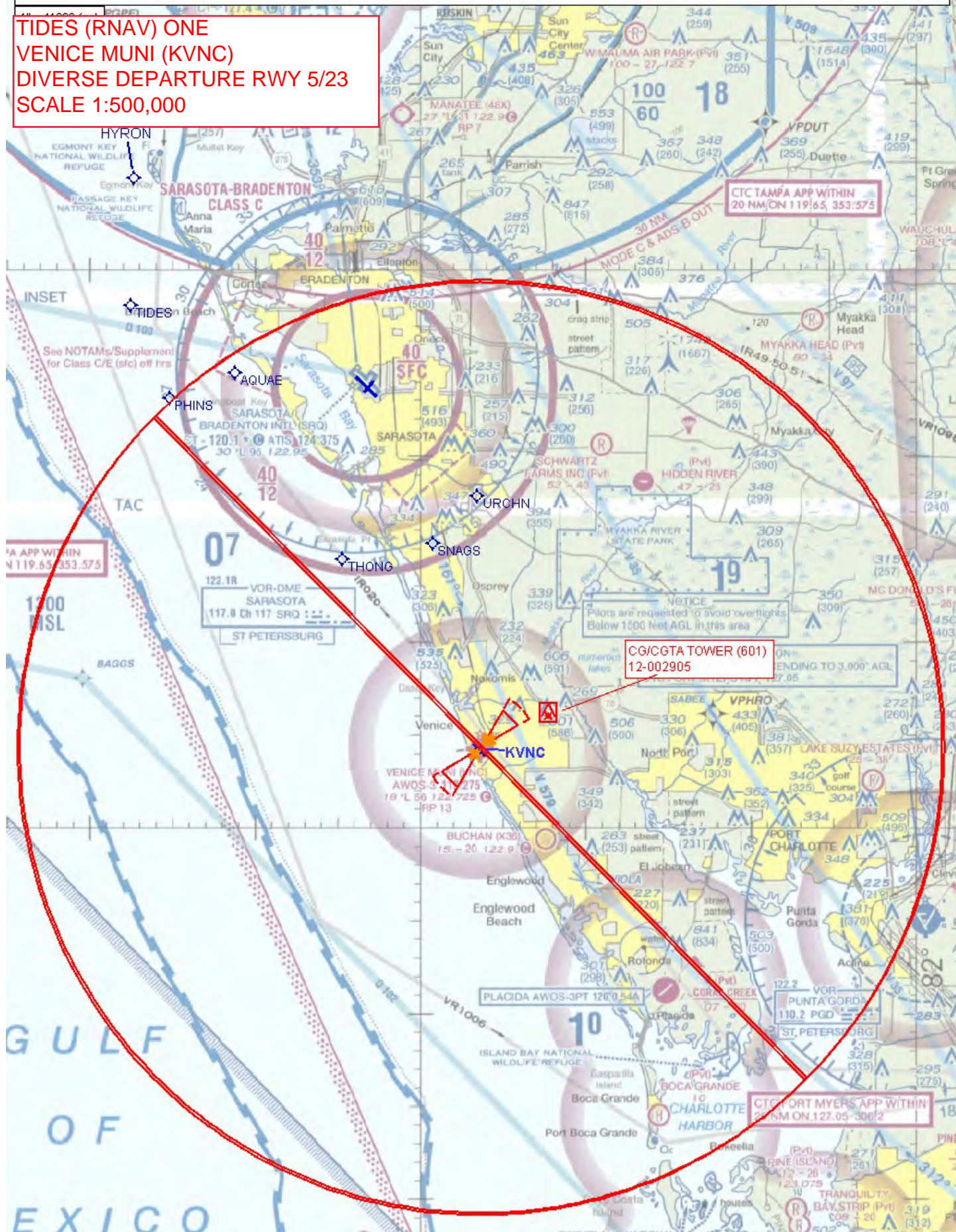


TIDES (RNAV) ONE
SARASOTA/BREDENTON INTL (KSRQ)
DIVERSE DEPARTURE RWY 5/22
SCALE 1:500,000



NM 10 20 30 40
FT 100000 200000

TIDES (RNAV) ONE
VENICE MUNI (KVNC)
DIVERSE DEPARTURE RWY 5/23
SCALE 1:500,000



TIDES (RNAV) ONE
VENICE MUNI (KVNC)
DIVERSE DEPARTURE RWY 13/31
SCALE 1:500,000

