

Flight Procedures Cover Page	Task Action: P-NOTAM	Task Type: IAP	Estimated Chart Date: 11/04/2021	APWS Task ID: B8FDC82CDC2942E3AC678D6DF8F38E47	APWS Project ID: 38831D7E63D3436BBA23D6BD3C9AE30F
Procedure: RNAV (GPS) RWY 32 AMDT 0B		Enroute: NO	Specialist: Moore, Frank		Agreement Number:
Airport ID: KJSO			Airport City: JACKSONVILLE		State: TX
Facility ID:	Facility Type:	Flight Inspection Remark Type:			
<div>Procedure Comments: P-NOTAM This Cancels FDC 0/7007 Order 8260.3, chapter 2, New Circling Criteria Applied. CONTACT DAVE TEFFETELLER 202-267-5177</div> <div><div>QUALITY 26 CHECKED</div><div>QUALITY 45 CHECKED</div></div>					

OLD

JACKSONVILLE, TEXAS

AL-6470 (FAA)

19115

WAAS CH 90327 W32A	APP CRS 315°	Rwy Idg TDZE Apt Elev	5006 665 678
--	------------------------	-----------------------------	---

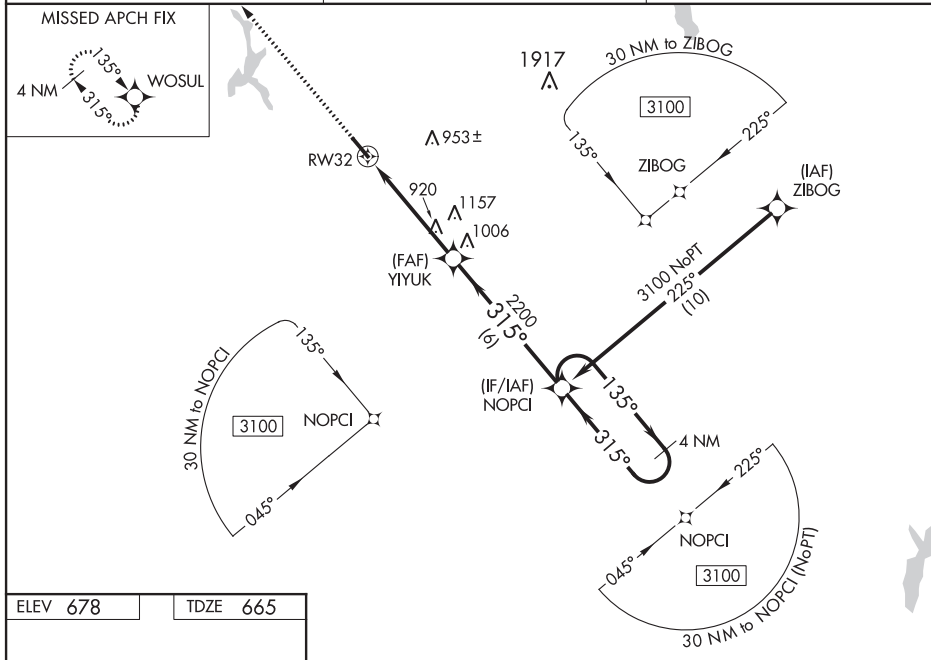
RNAV (GPS) RWY 32

CHEROKEE COUNTY (JSO)

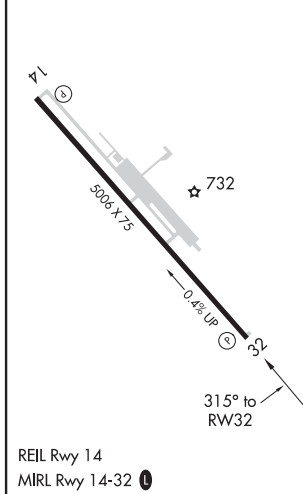
Baro-VNAV NA when using Nacogdoches altimeter setting. For uncompensated Baro-VNAV systems, LNAV/VNAV NA below -16°C (4°F) or above 54°C (130°F). When local altimeter setting not received, use Nacogdoches altimeter setting and increase DA 118 feet, increase all MDA 120 feet and LPV, LNAV/VNAV visibility all Cts ¼ mile, LNAV and Circling Cat C visibility ¾ mile. When VGSI inop, Straight-in/Circling Rwy 32 procedure NA at night. DME/DME RNP-0.3 NA. Visibility reduction by helicopters NA.

MISSED APPROACH: Climb to 3100 direct WOSUL and hold.

AWOS-3 119.075	LONGVIEW APP CON* 128.75 379.15	UNICOM 122.7 (CTAF)
--------------------------	---	-------------------------------



ELEV 678	TDZE 665
----------	----------



3100	WOSUL	4 NM Holding Pattern	135°	3100	GP 3.00° TCH 30
YYUK	2200	315°	2200	6 NM	
RW32	4.8 NM				
CATEGORY	A	B	C	D	
LPV DA	915-1	250 (300-1)		NA	
LNAV/VNAV DA	915-1	250 (300-1)		NA	
LNAV MDA	1220-1	555 (600-1)	1220-1 ⁵ / ₈ 555 (600-1 ⁵ / ₈)	NA	
CIRCLING	1220-1	542 (600-1)	1220-1 ⁵ / ₈ 542 (600-1 ⁵ / ₈)	NA	

JACKSONVILLE, TEXAS
Orig-A 02APR15

31°52'N-95°13'W

CHEROKEE COUNTY (JSO)
RNAV (GPS) RWY 32

SC-5, 20 MAY 2021 to 17 JUN 2021

KJSO
CHEROKEE COUNTY
JACKSONVILLE, TX
RNAV GPS RWY 32, ORIG-B
CIRCLING 1:100,000

