

Flight Procedures Cover Page	Task Action: FLIGHT CHECK	Task Type: IAP	Estimated Chart Date: 07/14/2022	APWS Task ID: B89A037B349E49DEB0E7A06FB0564014	APWS Project ID: 5504291585EE4034BC9FAAB4B6629306
Procedure: VOR RWY 29 AMDT 6		Enroute: NO	Specialist: Mitchell, Tyler		Agreement Number:
Airport ID: PAYA			Airport City: YAKUTAT		State: AK
Facility ID: YAK	Facility Type: VOR_DME	Flight Inspection Remark Type: New FC Slot			
<div>Procedure Comments: This Cancels !FDC NOTAM 1/2322.</div> <div>Active Data Used.</div> <div>Contact Casimir Tabaka: 405-954-7931.</div> <div><div>Digitally signed by CASIMIR L TABAKA May 11, 2022</div><div><div>QUALITY 29 CHECKED</div><div>5/5/22 J. DuBois</div><div>QUALITY 38 CHECKED</div></div></div>					

AL-1193 (FAA)

19115

VOR/DME YAK 113.3 Chan 80	APP CRS 308°	Rwy Idg 7732 TDZE 26 Apt Elev 33
---	------------------------	---

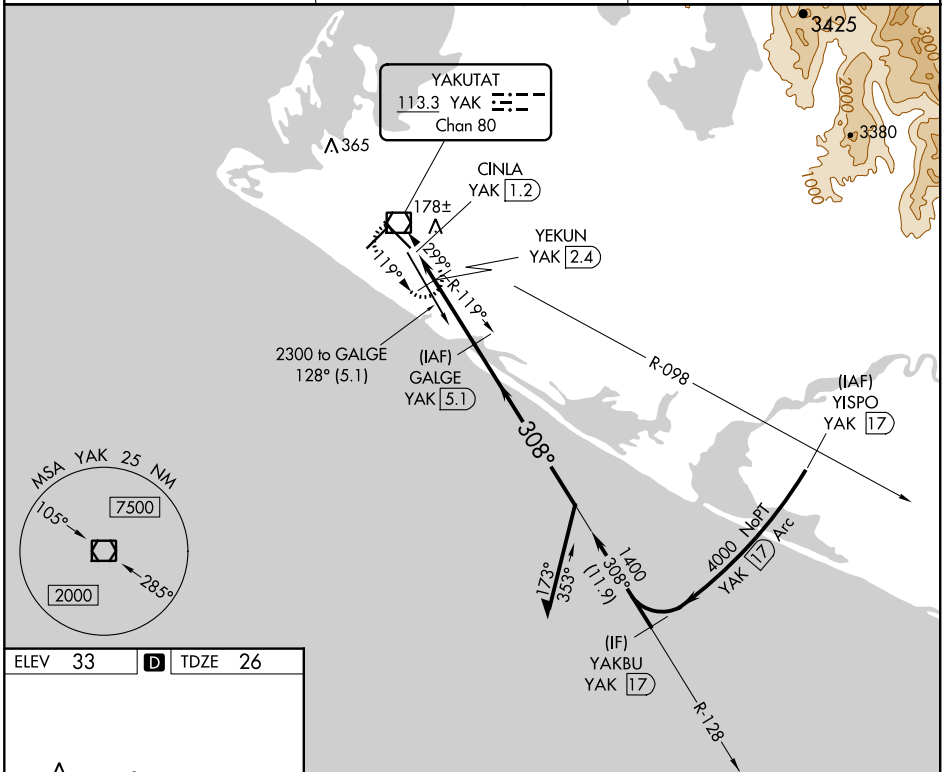
VOR/DME RWY 29
YAKUTAT (YAK) (PAYA)

T Inop table does not apply to Cats A/B.
A For inop MALSR, increase Cats C/D visibility to 1½ mile.

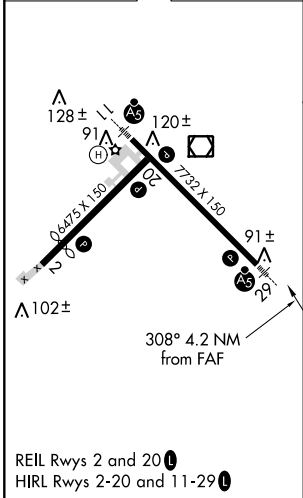
MALSR


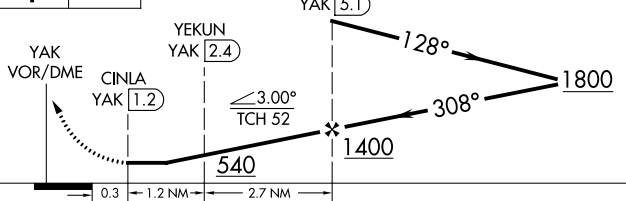

MISSED APPROACH: Climb to 2000 direct YAK
VOR/DME and hold, continue climb-in-hold to 2000.

ASOS 135.75	ANCHORAGE CENTER 119.0 263.1	JUNEAU RADIO 123.6 (CTAF) 0
-----------------------	--	---------------------------------------



ELEV 33	D	TDZE 26
---------	----------	---------



2000 ↑	YAK 	VGSI and descent angles not coincident (VGSI Angle 3.00/TCH 51).			
					
CATEGORY	A	B	C	D	
S-29	440-1 414 (500-1)				
 CIRCLING	500-1 467 (500-1)	520-1 487 (500-1)	620-1½ 587 (600-1½)	720-2¼ 687 (700-2¼)	

YAKUTAT, ALASKA
Amdt 5 31MAR16

YAKUTAT (YAK) (PAYA)
VOR/DME RWY 29

59°30'N-139°40'W

AK, 27 JAN 2022 to 24 MAR 2022

YAKUTAT, ALASKA

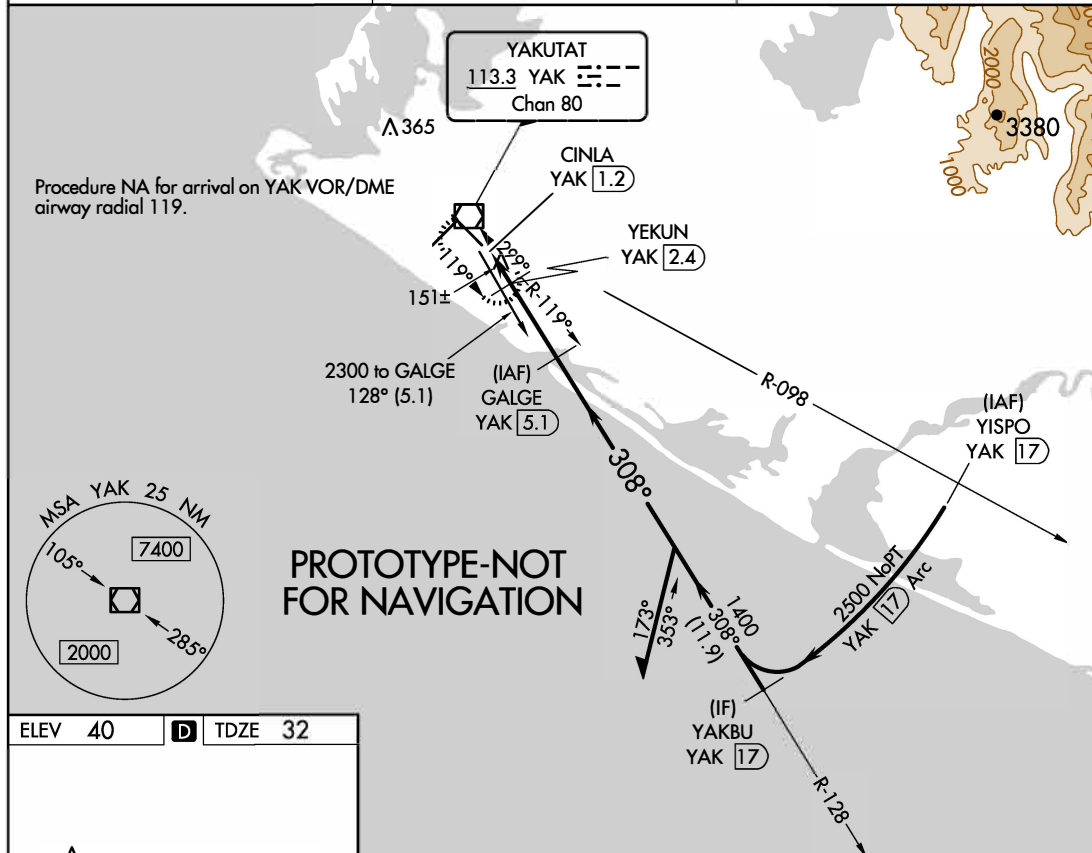
AL-1193 (FAA)

FIG

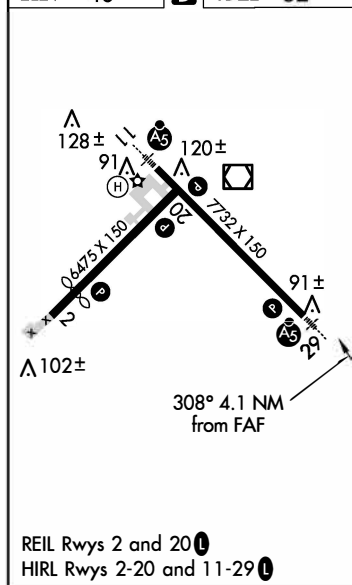
VOR/DME YAK 113.3 Chan 80	APP CRS 308°	Rwy Idg 7732 TDZE 32 Apt Elev 40
---	------------------------	---



VOR RWY 29 YAKUTAT (YAK) (PAYA)

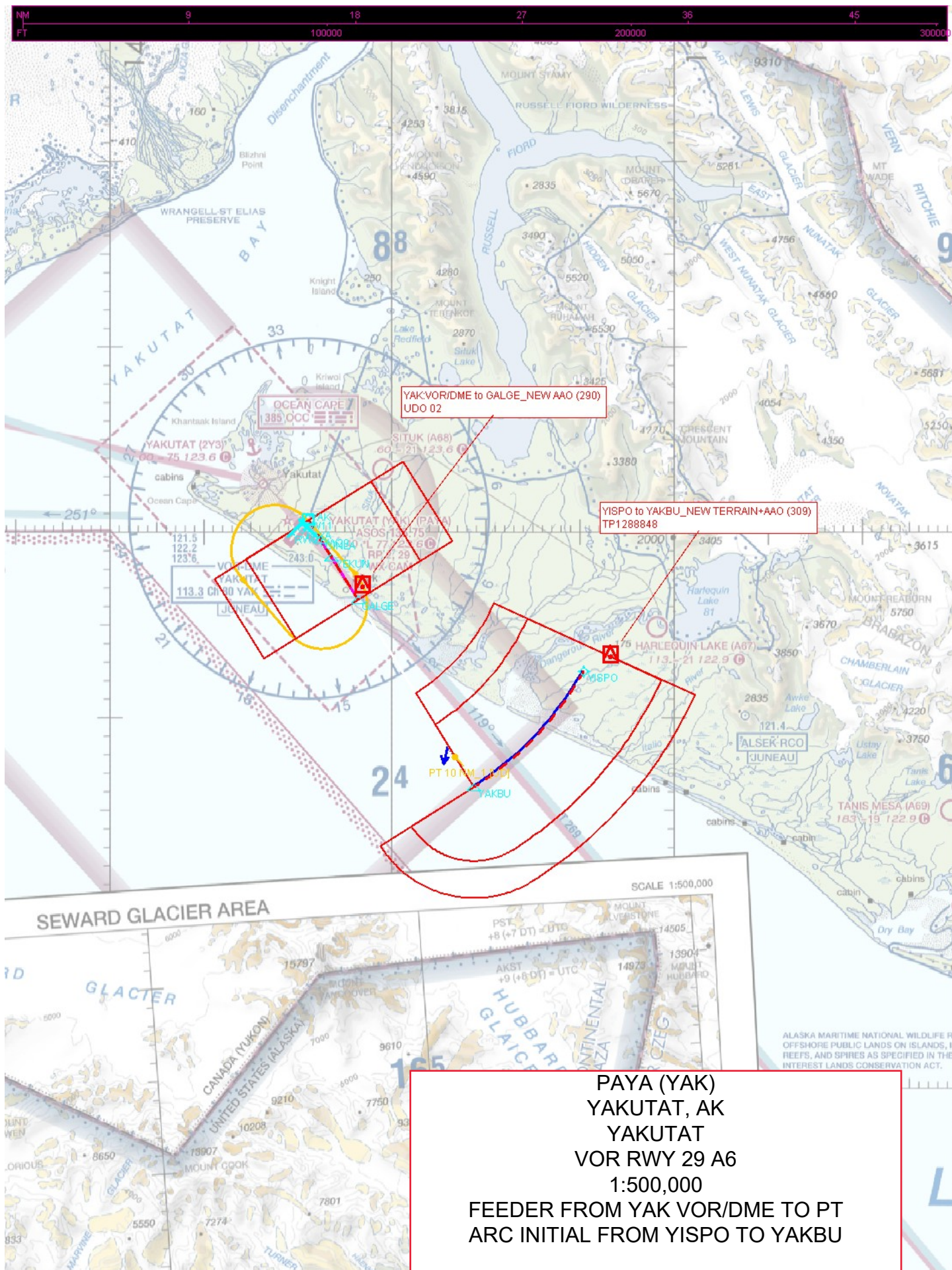
DME required.		
<p>▼ Circling Rwy 20 NA at night. Rwy 29 helicopter visibility reduction below $\frac{3}{4}$ SM NA. When Yakutat altimeter setting not received, procedure NA. Inop table does not apply to S-29 Cats A and B. For inop ALS, increase S-29 Cats C and D visibility to $1\frac{1}{8}$ SM.</p>		
<p>▲ MISLSR</p>		
<p>MISSED APPROACH: Climb to 2000 direct YAK VOR/DME and hold, continue climb-in-hold to 2000.</p>		
ASOS 135.75	ANCHORAGE CENTER 119.0 263.1	JUNEAU RADIO 123.6 (CTAF) 0

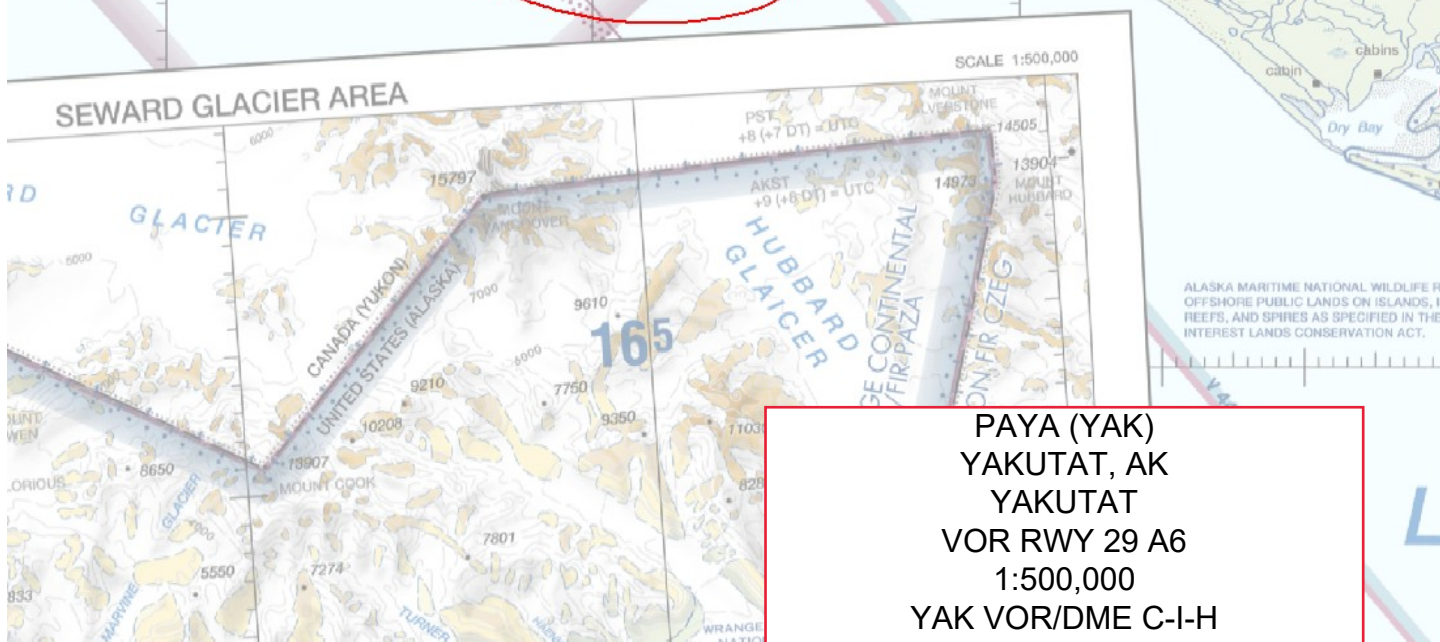


ELEV 40	D TDZE 32
----------------	-------------------------

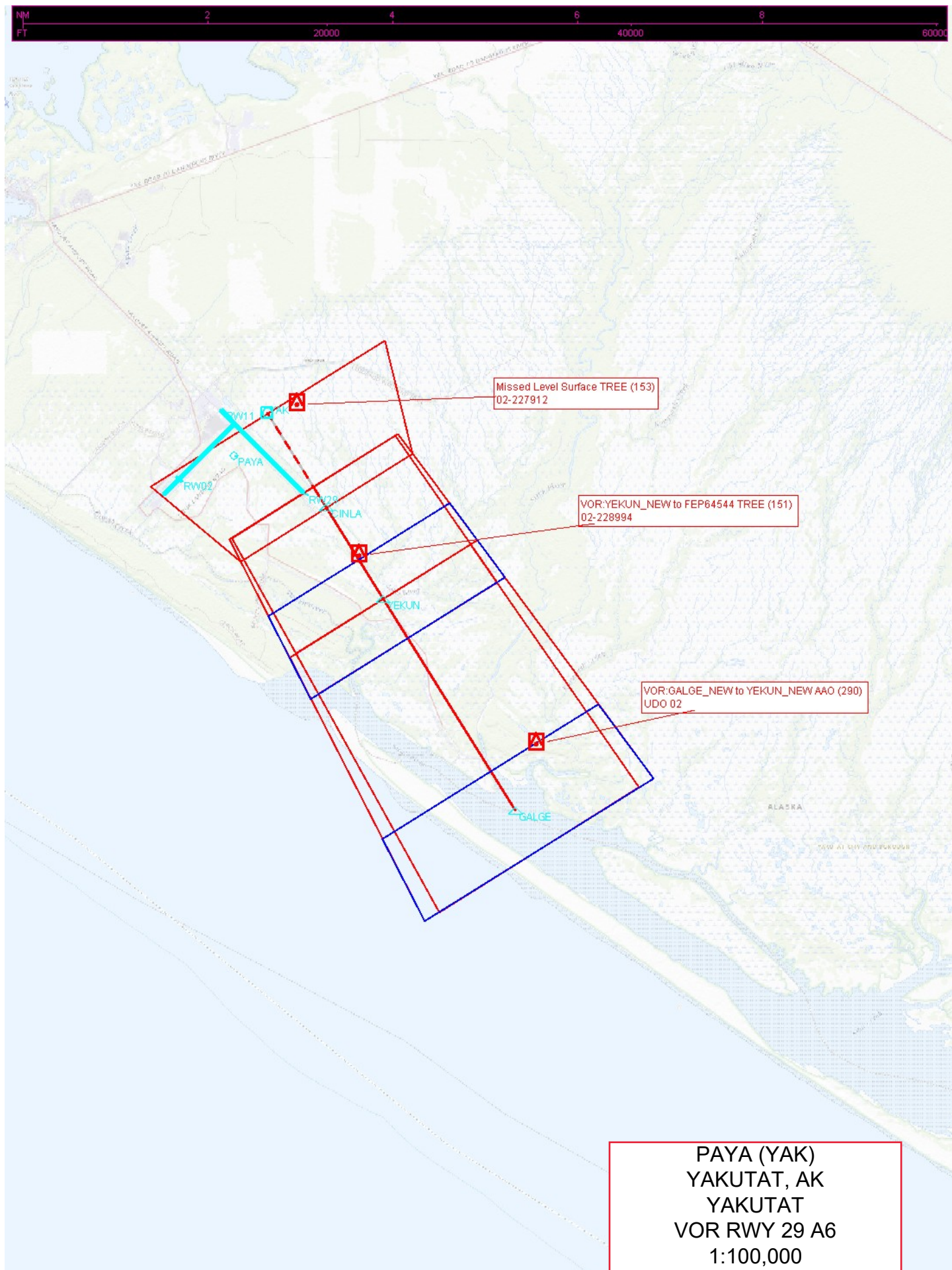


2000 ↑		YAK 			
YAK VOR/DME 		CINLA YAK 1.2		YEKUN YAK 2.4	
		540		GALGE YAK 5.1	
		≤3.00° TCH 52		128°	
		1400		308°	
		1800		Remain within 10 NM	
0.3		1.2 NM		2.7 NM	
CATEGORY	A		B		C
S-29		420-1 388 (400-1)			
CIRCLING		520-1 480 (500-1)		820-2¼ 780 (800-2¼)	
		540-1 500 (500-1)		820-2½ 780 (800-2½)	





PAYA (YAK)
YAKUTAT, AK
YAKUTAT
VOR RWY 29 A6
1:500,000
YAK VOR/DME C-I-H





Circling CAT D TOWER (377)
02-000746

Circling CAT C TOWER (269)
02-020293

Circling CAT B TREE (222)
02-226677

Circling CAT A DOME (209)
02-230081

PAYA (YAK)
YAKUTAT, AK
YAKUTAT
VOR RWY 29 A6
1:100,000
CIRCLING AREA