

Flight Procedures Cover Page	Task Action: Abbreviated Amendment	Task Type: IAP	Estimated Chart Date: 09/08/2022	APWS Task ID: B87E652ED30F437E9C54F97019ADE904	APWS Project ID: 65CF053FA01D48F89C224C57D0CCAC3A
Procedure: ILS Z OR LOC Z RWY 31 AMDT 23B		Enroute: NO	Specialist: Thibodeaux, Charles		Agreement Number:
Airport ID: KRST			Airport City: ROCHESTER		State: MN
Facility ID: RST	Facility Type: ILS	Flight Inspection Remark Type:			

Procedure Comments:
PENDING DATA USED.

AIRPORT AND NAVAID (I-RST) MAGVAR CHANGED FROM 1E/2005 TO 1W/2025

PROCESSED IAW TECHNICAL SUPPORT GROUP (AJF-17) MEMO DATED 07/07/2021
GUIDANCE FOR PROCEDURAL CHANGES REQUIRING FLIGHT INSPECTION/VALIDATION

CONTACT JASON KRETSCHMER, AJV-A421, 405-954-4019.


Digitally signed by
JASON KRETSCHMER
Aug 01, 2022

QUALITY
12
CHECKED


QUALITY
38
CHECKED

LOC I-RST 108.5	APP CRS 311°	Rwy Idg TDZE Apt Elev	9033 1304 1317
---------------------------	------------------------	-----------------------------	---

ILS Z or LOC Z RWY 31
ROCHESTER INTL (RST)



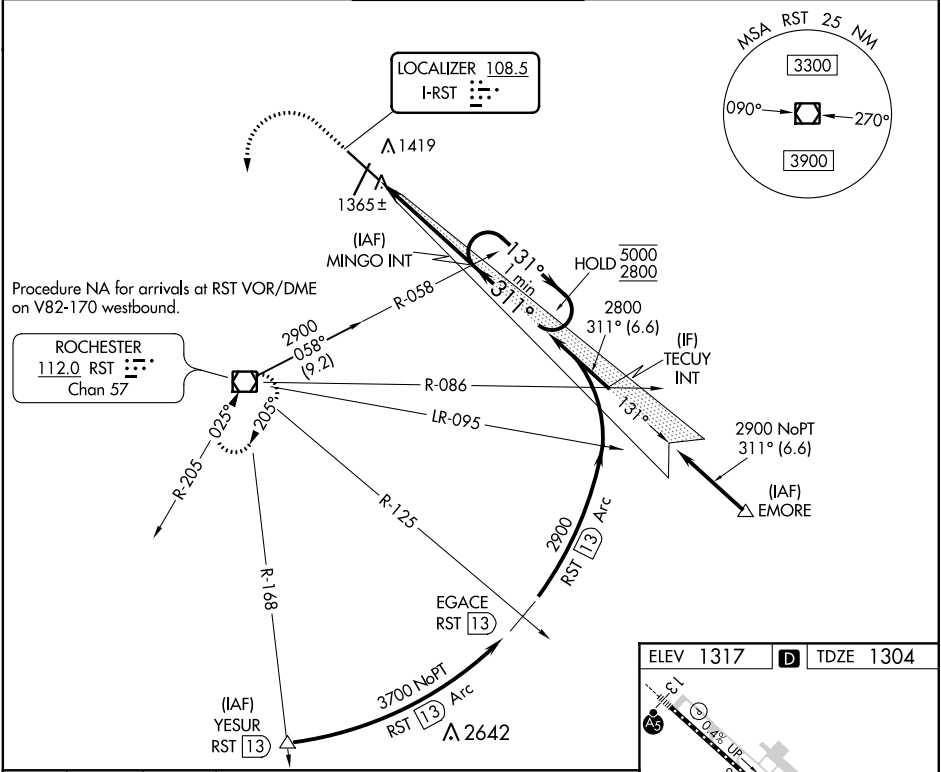
For inop ALS, increase S-LOC 31 Cat C/D visibility to RVR 5500.

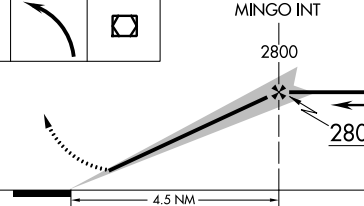



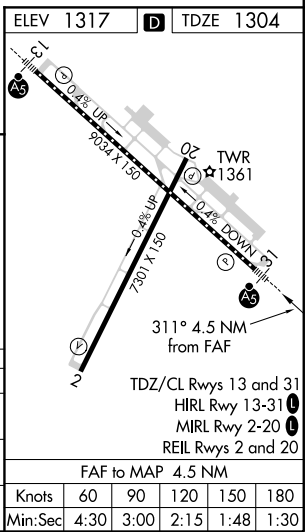
MALSR

MISSED APPROACH: Climb to 2000 then climbing left turn to 3000 direct RST VOR/DME and hold.

ATIS 120.5	ROCHESTER APP CON* 119.8 251.125	ROCHESTER TOWER* 118.3 (CTAF) 257.8	GND CON 121.9	UNICOM 122.95
----------------------	--	---	-------------------------	-------------------------




<div><div>2000</div><div>3000</div><div>RST</div></div> <div><p>MINGO INT</p><p>One Minute Holding Pattern</p><p>2800</p><p>131° → 5000</p><p>← 311° 2800</p><p>GS 3.00° TCH 56</p><p>4.5 NM</p></div>				
CATEGORY	A	B	C	D
S-ILS 31	1504/18		200 (200-½)	
S-LOC 31	1620/24		316 (400-½)	
 CIRCLING	1720-1 403 (500-1)	1780-1 463 (500-1)	1900-1½ 583 (600-½)	1900-2 583 (600-2)



NC-1, 30 DEC 2021 to 27 JAN 2022

NC-1, 30 DEC 2021 to 27 JAN 2022

ILS Z RWY 31 (SA CAT I & II)
ROCHESTER INTL (RST)

<p>MALSR</p> 	<p>MISSED APPROACH: Climb to 2000 then climbing left turn to 3000 direct RST VOR/DME and hold.</p>
--	--

SA CATEGORY I & II ILS - SPECIAL AIRCREW
& AIRCRAFT CERTIFICATION REQUIRED

TDZ/CL Rwy 13 and 31
HIRL Rwy 13-31 **L**
MIRL Rwy 2-20 **L**
REIL Rwy 2 and 20