

Flight Procedures Cover Page	Task Action: Abbreviated Amendment	Task Type: IAP	Estimated Chart Date: 06/15/2023	APWS Task ID: B810CB91BAA44333A4D6CD6620BF0FCB	APWS Project ID: 8BDDDB4E4C99E4ECFA6356568CACA3641
Procedure: RNAV (GPS) RWY 27 AMDT 0C		Enroute: NO	Specialist: Gorman, Barbara		Agreement Number:
Airport ID: KVPZ			Airport City: VALPARAISO		State: IN
Facility ID:	Facility Type:	Flight Inspection Remark Type:			
<p>Procedure Comments:          PROCESSED IAW TECHNICAL SUPPORT GROUP (AJF-17) MEMO DATED 07/07/2021 GUIDANCE FOR PROCEDURAL CHANGES REQUIRING FLIGHT INSPECTION/VALIDATION.          VORMON PROJECT: OXI VOR/DME DECOMMISSIONING.          CONTACT: CASIMIR TABAKA: 405.954.7931</p>					

QUALITY  
9  
CHECKED

QUALITY  
34  
CHECKED

WAAS CH <b>86806</b> <b>W27A</b>	APP CRS <b>272°</b>	Rwy Idg TDZE <b>770</b> Apt Elev <b>770</b>
--	------------------------	---

RNAV (GPS) RWY 27  
PORTER COUNTY RGNL (VPZ)

**▼** Baro-VNAV NA when using Lansing Muni altimeter setting. For uncompensated Baro-VNAV systems, procedure NA below -16°C (4°F) or above 54°C (130°F). DME/DME RNP-0.3 NA. When local altimeter setting not received, use Lansing Muni altimeter setting; increase LPV DA to 1097 feet and all visibilities ¼ SM; increase LNAV/VNAV DA to 1278 feet and all visibilities ¼ SM; increase all MDAs 80 feet and LNAV and Circling Cats C/D visibility ¼ SM.

**MALSR**

**MISSED APPROACH:**  
Climb to 2600 direct KEYVE and on track 182° to LERGE and on track 092° to LECIL and on track 050° to FEVIX and hold.

ASOS <b>125.875</b>	SOUTH BEND APP CON ★ <b>132.05 257.8</b>	CLNC DEL <b>120.525</b>	UNICOM <b>122.725 (CTAF) 0</b>
------------------------	---	----------------------------	-----------------------------------

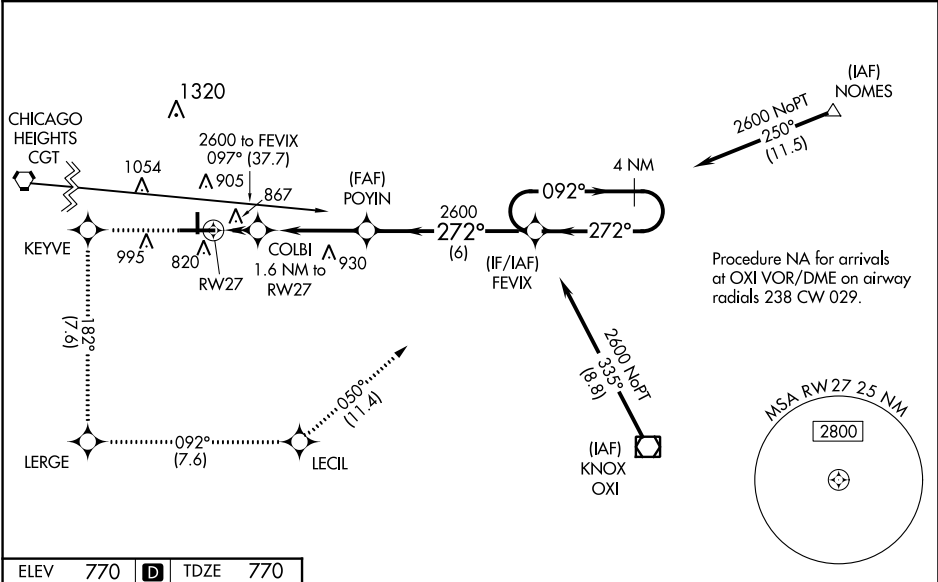


Diagram of the approach path. The path starts at a 4 NM Holding Pattern at FEVIX. The missed approach procedure (MAP) is a 4 NM climb to 2600 feet, then a 1.6 NM climb to 1320 feet, and a 3.9 NM climb to 2600 feet. The final approach segment is a 6 NM climb to 2600 feet. The path is labeled with distances and altitudes: 4 NM Holding Pattern, 1.6 NM, 3.9 NM, 6 NM, 2600, 1320, 2600. The path is also labeled with distances and altitudes: 4 NM Holding Pattern, 1.6 NM, 3.9 NM, 6 NM, 2600, 1320, 2600. The path is also labeled with distances and altitudes: 4 NM Holding Pattern, 1.6 NM, 3.9 NM, 6 NM, 2600, 1320, 2600.

HIRL Rwy 9-27  
MIRL Rwy 18-36  
REIL Rws 9, 18 and 36

<div><div><div>2600</div><div>↑</div></div><div><div>KEYVE</div><div><div></div><div></div><div></div><div></div></div></div><div><div>tr 182°</div><div><div></div><div></div></div></div><div><div>LERGE</div><div><div></div><div></div><div></div><div></div></div></div><div><div>tr 092°</div><div><div></div><div></div></div></div><div><div>LECIL</div><div><div></div><div></div><div></div><div></div></div></div><div><div>tr 050°</div><div><div></div><div></div></div></div><div><div>FEVIX</div><div><div></div><div></div><div></div><div></div></div></div></div>	4 NM Holding Pattern		2600	092°	272°	272°	GP 3.00° TCH 50
<div><div><div>*LNAV only.</div><div><div>COLBI</div><div>1.6 NM to RW27</div></div><div><div>POYIN</div><div>2600</div></div><div><div>FEVIX</div></div></div></div>	2600	1320	6 NM	VGSIs and descent angles not coincident (VGSi Angle 3.00/TCH 50).			
CATEGORY	A	B	C	D			
LPV DA		1020-½	250 (300-½)				
LNAV/VNAV DA		1201-1	431 (500-1)				
LNAV MDA	1180-½	410 (500-½)	1180-¾	410 (500-¾)			
CIRCLING	1260-1 490 (500-1)	1300-1 530 (600-1)	1360-1½ 590 (600-1½)	1620-2¾ 850 (900-2¾)			