

DME DME Assessment Results for TRESA1 path ALB_TRESA

Results Summary

Flyability:	Completed
DME/DME:	Completed - No Critical DMEs
Name:	David C-CTR Cook
Project File:	C:\Users\David C-CTR Cook\Documents\TARGETS WORK\DME-DME WORK\10-2-2025 PUBLICATION\KPOU TRESA1 (RNAV) STAR\SWF TRESA1 (RNAV) STAR_20240930_DME-DME.tgs
Output File:	C:\Users\David C-CTR Cook\Documents\TARGETS WORK\DME-DME WORK\10-2-2025 PUBLICATION\KPOU TRESA1 (RNAV) STAR\KSWF [IFPA] TRESA1 20240930_1103 EDT\ALB_TRESA\KSWF TRESA1 RNAV STAR ALB TRESA 20240930_1103 EDT.pdf
Procedure Name:	TRESA1
Software: DmeDmePlugin:	7.3.3
Date/Time:	09/30/2024 11:03 EDT
Databases:	MITRE 3DEP 3 arcsec

Failures

No Failures

Warnings

No Warnings

Informational

No Informational

Notes For Flight Check

None

Flight Plan

Name	Type	Lat/Lon	Altitude (ft)	VNAV Mode	Ground Speed (kts)	Turn Type	Leg Type
ALB	WP	N42° 44' 50.2097", W073° 48' 11.4623"	11000	VNAV	200	FLY_BY	TF
TRESA	WP	N41° 52' 49.6100", W073° 49' 06.8000"	5500	VNAV	200	FLY_BY	TF

Flyability

Flight Type:	RNAV_STAR
Selected Airport:	KSWF [IFPA]
Climb Gradient:	None assigned
Speeds:	200 Ground Speed to 11000 FT
	240 Ground Speed to 18000 FT
	260 Ground Speed to 24000 FT
	340 Ground Speed above 24000 FT
Descent During a Turn:	Allowed
VNAV Mode:	Flight Plan

DME DME Assessment Results for TRESA1 path ALB_TRESA

DME/DME	
RNP:	RNP 2
Flight Mode:	Manual
Line of Sight (DTED Level 0 Max):	Evaluated
Inertial Drift:	Enabled
Initial Drift:	0.558 NM
INS Drift Rate:	8.0 NM/Hour
Range Mode:	OSV
RNP Edges:	Evaluated
Min DME Range:	3.0 NM
DME Types:	DME, VOR-DME, VORTAC, TACAN
DME Include Angles:	30 to 150
Critical DMEs:	Allowed
DoD Facilities:	Not included
Foreign Facilities:	Not included
High DMEs:	Included
Low DMEs:	Included
Terminal DMEs:	Included
Flight Check DMEs:	Not selected
Higher Altitudes:	Not Evaluated
Near Maximum Altitude:	Not Evaluated
Automatic ESVs:	Not enabled
Disabled DMEs:	None

DME/DME (Continued)										
DMEs Used										
#	Name	Lat/Lon	MAGVAR	Range	Type	Source	Critical	Status	Time	Distance
1	CTR	N42° 17' 28.7470", W072° 56' 57.8190"	13.0 W	40	L	IFPA	NO	Enabled		
2	HUO	N41° 24' 34.8718", W074° 35' 29.7393"	11.0 W	130	H	IFPA	NO	Enabled		
3	MPV	N44° 05' 07.7171", W072° 26' 57.7073"	16.0 W	130	DH	IFPA	NO	Enabled		
4	ALB	N42° 44' 50.2097", W073° 48' 11.4623"	13.0 W	40	L	IFPA	NO	Enabled		
5	IGN	N41° 39' 55.6258", W073° 49' 20.0613"	12.0 W	40	L	IFPA	NO	Enabled		
6	PWL	N41° 46' 11.1770", W073° 36' 01.9850"	12.0 W	40	L	IFPA	NO	Enabled		
7	CAM	N42° 59' 39.4398", W073° 20' 38.4681"	14.0 W	40	L	IFPA	NO	Enabled		
8	DNY	N42° 10' 41.8100", W074° 57' 24.9860"	11.0 W	40	L	IFPA	NO	Enabled		
9	CMK	N41° 16' 48.3219", W073° 34' 52.7751"	12.0 W	40	L	IFPA	NO	Enabled		

DME DME Assessment Results for TRESA1 path ALB_TRESA

Flight Check DME Selection						
Distance [NM]	Selected DMEs					Alternate
0.0	CTR [IFPA]	CAM [IFPA]	DNY [IFPA]	PWL [IFPA]	MPV [IFPA]	
1.1	CTR [IFPA]	CAM [IFPA]	DNY [IFPA]	PWL [IFPA]		
2.2	CTR [IFPA]	CAM [IFPA]	DNY [IFPA]			
2.4						
33.7	DNY [IFPA]	IGN [IFPA]	ALB [IFPA]	CTR [IFPA]	PWL [IFPA]	
39.8	DNY [IFPA]	IGN [IFPA]	CTR [IFPA]	PWL [IFPA]		
42.8	CTR [IFPA]	PWL [IFPA]	IGN [IFPA]			
48.7	HUO [IFPA]	PWL [IFPA]	CTR [IFPA]	IGN [IFPA]		
50.9	HUO [IFPA]	PWL [IFPA]	CTR [IFPA]	CMK [IFPA]	IGN [IFPA]	

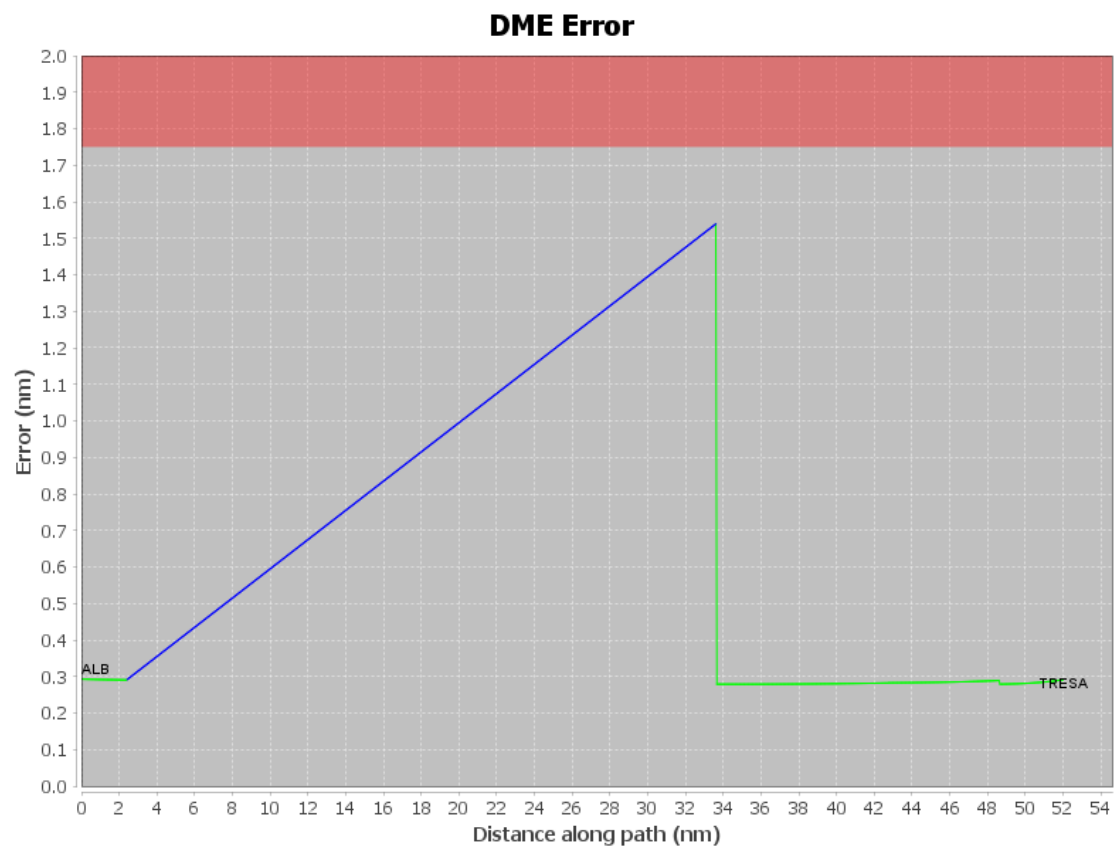
Inertial Drift Segments			
#	Start Location	End Location	Length [NM]
1	N42° 42' 23.5256", W073° 48' 14.0980"	N42° 11' 09.8763", W073° 48' 47.4628"	31.2195

Available DMEs by Waypoints			
Waypoint Before	Waypoint After	DME List	Suggested DMEs
ALB	TRESA	CTR [IFPA], HUO [IFPA], MPV [IFPA], ALB [IFPA], IGN [IFPA], PWL [IFPA], CAM [IFPA], DNY [IFPA], CMK [IFPA]	

DME DME Assessment Results for TRESA1 path ALB_TRESA

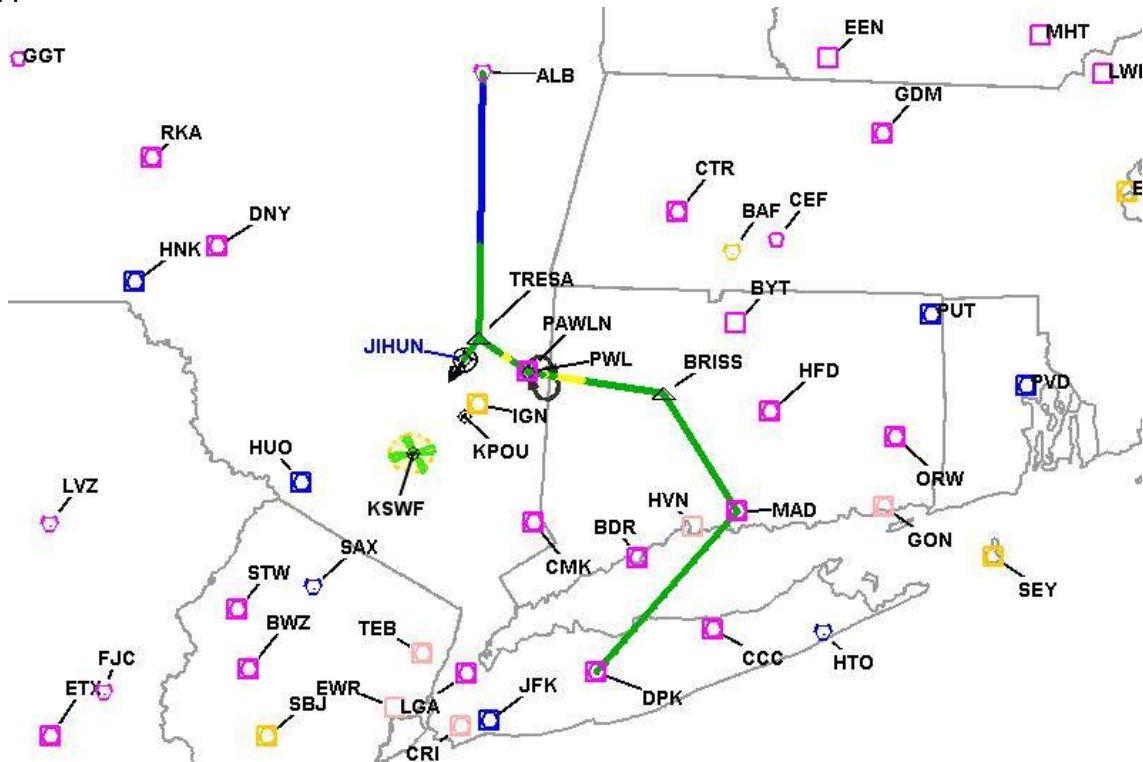
User Data Files								
#	File Name							
1	UserDMEsKPOU [IFPA] TRESA1 RNAV STAR_20240723_0938 EDT.udt							
User DMEs								
#	Name	Lat/Lon	MAGVAR	Range	Elevation [ft]	Frequency	Replaces	Status
1	UDT ESV DNY DNY [IFPA]	N42° 10' 41.8100", W074° 57' 24.9860"	11.0 W	40	2560	112.1	UDT ESV DNY	
ESV:		Bearing [True]: 50.0° to 122.0° Bearing [Mag]: 61.0° to 133.0°				Arc Distance: Out to 70.0 NM Altitude: 9000.0 to 16000.0 ft		
2	UDT ESV DNY DNY [IFPA]	N42° 10' 41.8100", W074° 57' 24.9860"	11.0 W	40	2560	112.1	UDT ESV DNY	
ESV:		Bearing [True]: 89.0° to 100.0° Bearing [Mag]: 100.0° to 111.0°				Arc Distance: Out to 56.0 NM Altitude: 5400.0 to 20600.0 ft		
3	UDT ESV PWL PWL [IFPA]	N41° 46' 11.1770", W073° 36' 01.9850"	12.0 W	40	1250	114.3	UDT ESV PWL	
ESV:		Bearing [True]: 341.0° to 357.0° Bearing [Mag]: 353.0° to 9.0°				Arc Distance: Out to 62.0 NM Altitude: 9900.0 to 19300.0 ft		
4	UDT ESV PWL PWL [IFPA]	N41° 46' 11.1770", W073° 36' 01.9850"	12.0 W	40	1250	114.3	UDT ESV PWL	
ESV:		Bearing [True]: 341.0° to 357.0° Bearing [Mag]: 353.0° to 9.0°				Arc Distance: Out to 62.0 NM Altitude: 9900.0 to 19300.0 ft		
5	UDT ESV HUO HUO [IFPA]	N41° 24' 34.8718", W074° 35' 29.7393"	11.0 W	130	1300.3	116.1	UDT ESV HUO	
ESV:		Bearing [True]: 46.0° to 55.0° Bearing [Mag]: 57.0° to 66.0°				Arc Distance: Out to 48.0 NM Altitude: 4200.0 to 15900.0 ft		
6	UDT ESV CTR CTR [IFPA]	N42° 17' 28.7470", W072° 56' 57.8190"	13.0 W	40	1600	115.1	UDT ESV CTR	
ESV:		Bearing [True]: 299.0° to 310.0° Bearing [Mag]: 312.0° to 323.0°				Arc Distance: Out to 51.0 NM Altitude: 9800.0 to 19600.0 ft		
7	UDT ESV HUO HUO [IFPA]	N41° 24' 34.8718", W074° 35' 29.7393"	11.0 W	130	1300.3	116.1	UDT ESV HUO	
ESV:		Bearing [True]: 44.0° to 59.0° Bearing [Mag]: 55.0° to 70.0°				Arc Distance: Out to 51.0 NM Altitude: 4900.0 to 15900.0 ft		
8	UDT ESV CTR CTR [IFPA]	N42° 17' 28.7470", W072° 56' 57.8190"	13.0 W	40	1600	115.1	UDT ESV CTR	
ESV:		Bearing [True]: 234.0° to 262.0° Bearing [Mag]: 247.0° to 275.0°				Arc Distance: Out to 50.0 NM Altitude: 4400.0 to 19600.0 ft		

DME DME Assessment Results for TRESA1 path ALB_TRESA

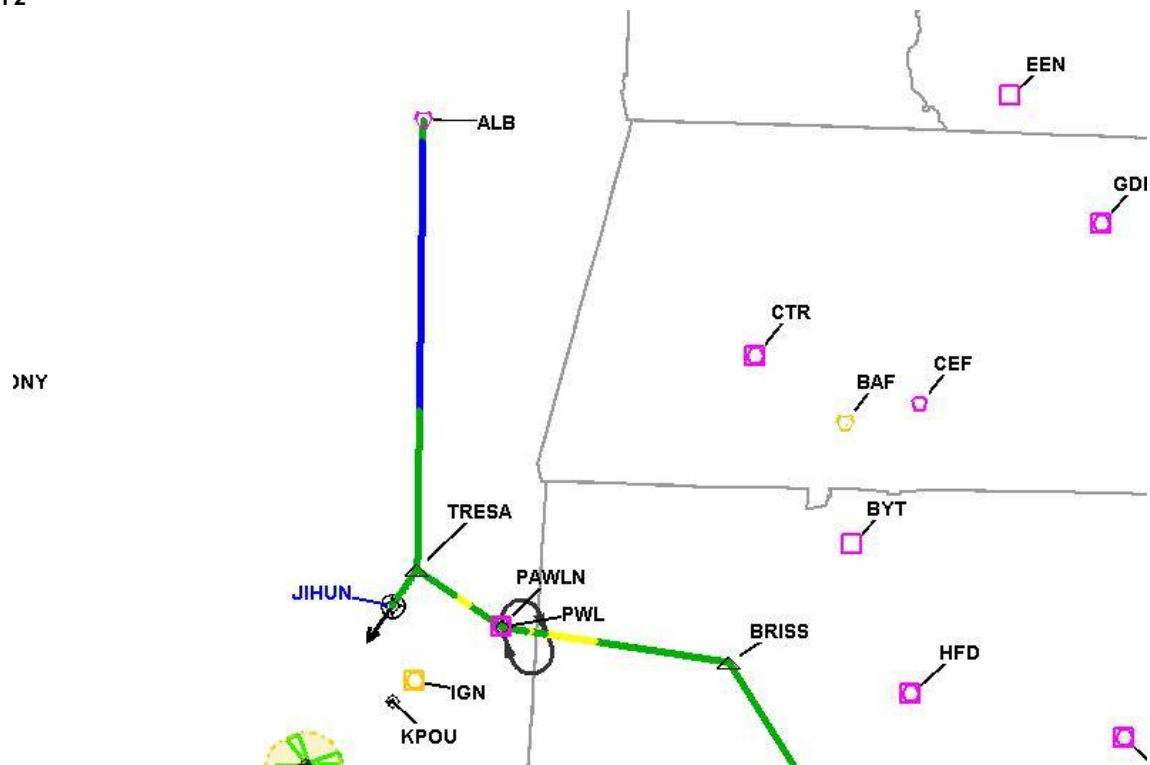


DME DME Assessment Results for TRESA1 path ALB_TRESA

Graphic Depiction 1

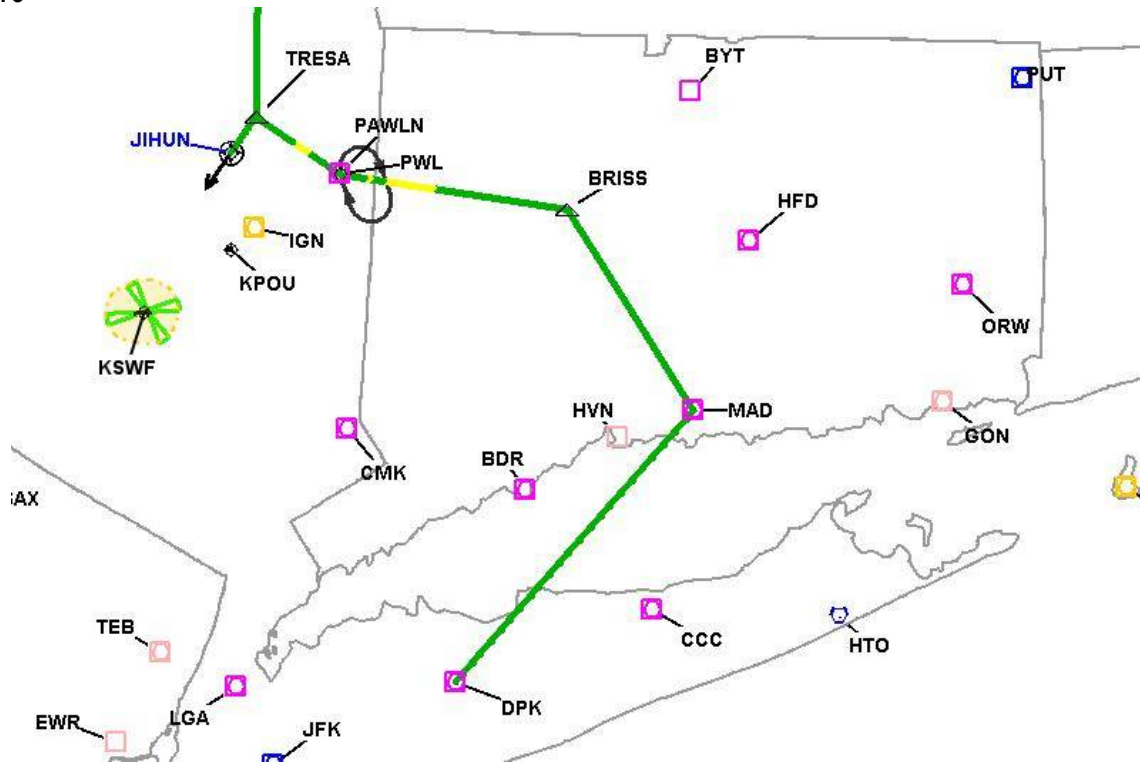


DME DME Assessment Results for TRESA1 path ALB_TRESA



Graphic Depiction 3

DME DME Assessment Results for TRESA1 path ALB_TRESA



DME DME Assessment Results for TRESA1 path DPK_JIHUN

Results Summary

Flyability:	Completed
DME/DME:	Completed - No Critical DMEs
Name:	David C-CTR Cook
Project File:	C:\Users\David C-CTR Cook\Documents\TARGETS WORK\DME-DME WORK\10-2-2025 PUBLICATION\KPOU TRESA1 (RNAV) STAR\SWF TRESA1 (RNAV) STAR_20240930_DME-DME.tgs
Output File:	C:\Users\David C-CTR Cook\Documents\TARGETS WORK\DME-DME WORK\10-2-2025 PUBLICATION\KPOU TRESA1 (RNAV) STAR\KSWF [IFPA] TRESA1 20240930_1103 EDT\DPK_JIHUN\KSWF TRESA1 RNAV STAR DPK JIHUN 20240930_1103 EDT.pdf
Procedure Name:	TRESA1
Software: DmeDmePlugin:	7.3.3
Date/Time:	09/30/2024 11:03 EDT
Databases:	MITRE 3DEP 3 arcsec

Failures

No Failures

Warnings

No Warnings

Informational

No Informational

Notes For Flight Check

None

Flight Plan

Name	Type	Lat/Lon	Altitude (ft)	VNAV Mode	Ground Speed (kts)	Turn Type	Leg Type
DPK	WP	N40° 47' 30.3601", W073° 18' 13.2386"	5500	VNAV	200	FLY_BY	TF
MAD	WP	N41° 18' 49.9000", W072° 41' 31.9300"	5500	VNAV	200	FLY_BY	TF
BRISS	WP	N41° 42' 09.3600", W073° 01' 00.1500"	5500	VNAV	200	FLY_BY	TF
PAWLN	WP	N41° 46' 11.5100", W073° 36' 02.6400"	5500	VNAV	200	FLY_BY	TF
TRESA	WP	N41° 52' 49.6100", W073° 49' 06.8000"	5500	VNAV	200	FLY_BY	TF
JIHUN	WP	N41° 48' 41.4310", W073° 52' 52.5283"	0	VNAV	200	FLY_OVER	TF

Flyability

Flight Type:	RNAV_STAR
Selected Airport:	KSWF [IFPA]
Climb Gradient:	None assigned
Speeds:	200 Ground Speed to 11000 FT
	240 Ground Speed to 18000 FT
	260 Ground Speed to 24000 FT
	340 Ground Speed above 24000 FT
Descent During a Turn:	Allowed
VNAV Mode:	Flight Plan

DME DME Assessment Results for TRESA1 path DPK_JIHUN

DME/DME	
RNP:	RNP 2
Flight Mode:	Manual
Line of Sight (DTED Level 0 Max):	Evaluated
Inertial Drift:	Enabled
Initial Drift:	0.558 NM
INS Drift Rate:	8.0 NM/Hour
Range Mode:	OSV
RNP Edges:	Evaluated
Min DME Range:	3.0 NM
DME Types:	DME, VOR-DME, VORTAC, TACAN
DME Include Angles:	30 to 150
Critical DMEs:	Allowed
DoD Facilities:	Not included
Foreign Facilities:	Not included
High DMEs:	Included
Low DMEs:	Included
Terminal DMEs:	Included
Flight Check DMEs:	Not selected
Higher Altitudes:	Not Evaluated
Near Maximum Altitude:	Not Evaluated
Automatic ESVs:	Not enabled
Disabled DMEs:	None

DME/DME (Continued)										
DMEs Used										
#	Name	Lat/Lon	MAGVAR	Range	Type	Source	Critical	Status	Time	Distance
1	PVD	N41° 43' 27.6334", W071° 25' 46.7078"	14.0 W	130	DH	IFPA	NO	Enabled		
2	HUO	N41° 24' 34.8718", W074° 35' 29.7393"	11.0 W	130	H	IFPA	NO	Enabled		
3	HVN	N41° 15' 44.3264", W072° 53' 06.6847"	0.0 E	25	T	IFPA	NO	Enabled		
4	LGA	N40° 47' 01.3731", W073° 52' 06.9569"	12.0 W	40	L	IFPA	NO	Enabled		
5	BYT	N41° 55' 50.0220", W072° 41' 59.5420"	0.0 E	40	L	IFPA	NO	Enabled		
6	DPK	N40° 47' 30.3601", W073° 18' 13.2386"	12.0 W	40	L	IFPA	NO	Enabled		
7	HFD	N41° 38' 27.9769", W072° 32' 50.7048"	13.0 W	40	L	IFPA	NO	Enabled		
8	PWL	N41° 46' 11.1770", W073° 36' 01.9850"	12.0 W	40	L	IFPA	NO	Enabled		
9	CMK	N41° 16' 48.3219", W073° 34' 52.7751"	12.0 W	40	L	IFPA	NO	Enabled		
10	CTR	N42° 17' 28.7470", W072° 56' 57.8190"	13.0 W	40	L	IFPA	NO	Enabled		
11	ORW	N41° 33' 23.0534", W071° 59' 57.6719"	14.0 W	40	L	IFPA	NO	Enabled		
12	BDR	N41° 09' 38.5404", W073° 07' 28.1507"	12.0 W	40	L	IFPA	NO	Enabled		
13	CCC	N40° 55' 46.6278", W072° 47' 55.8897"	13.0 W	130	H	IFPA	NO	Enabled		
14	MAD	N41° 18' 49.9000", W072° 41' 31.9300"	13.0 W	40	L	IFPA	NO	Enabled		
15	IGN	N41° 39' 55.6258", W073° 49' 20.0613"	12.0 W	40	L	IFPA	NO	Enabled		
16	JFK	N40° 37' 58.3816", W073° 46' 17.0103"	12.0 W	130	H	IFPA	NO	Enabled		
17	BAF	N42° 09' 43.0527", W072° 42' 58.3182"	14.0 W	40	L	IFPA	NO	Enabled		
18	HTO	N40° 55' 08.3846", W072° 19' 00.1357"	13.0 W	130	H	IFPA	NO	Enabled		

DME DME Assessment Results for TRESA1 path DPK_JIHUN

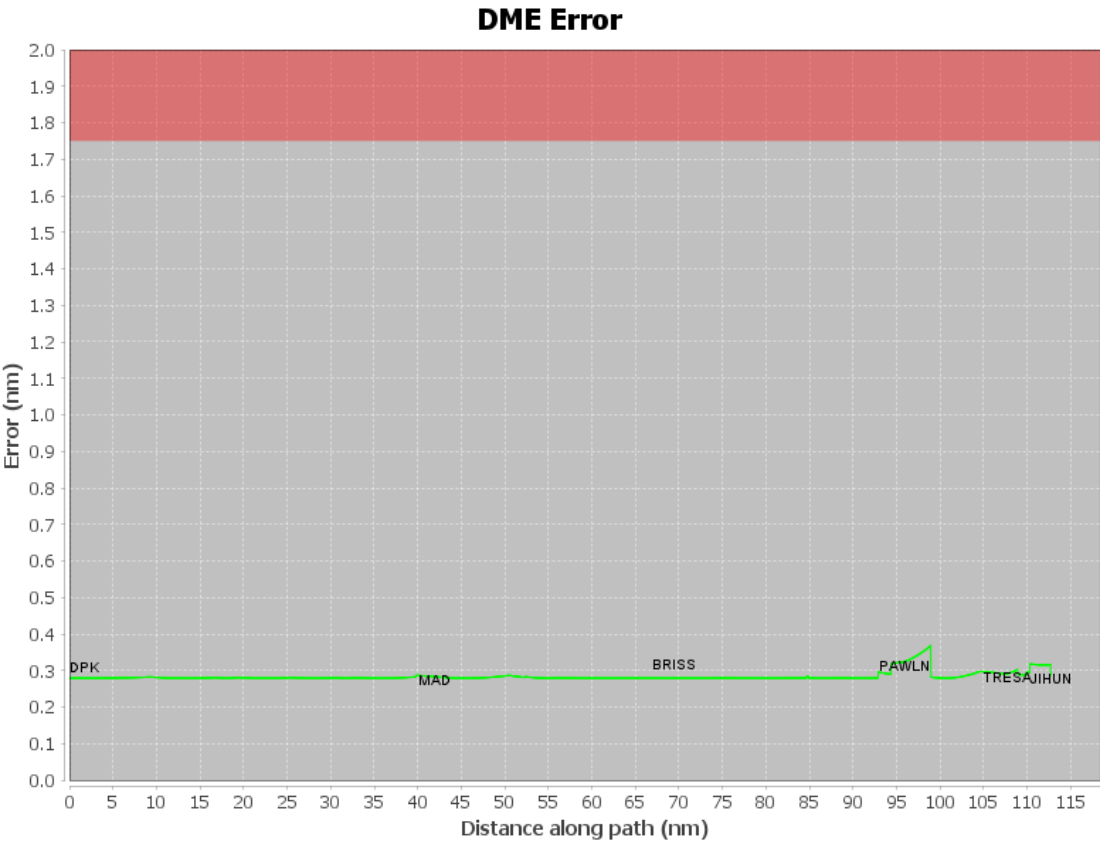
Flight Check DME Selection						
Distance [NM]	Selected DMEs					Alternate
0.0	JFK [IFPA]	CMK [IFPA]	CCC [IFPA]	LGA [IFPA]	BDR [IFPA]	
15.5	DPK [IFPA]	CMK [IFPA]	MAD [IFPA]	HVN [IFPA]	CCC [IFPA]	HTO [IFPA]
30.8	BDR [IFPA]	CCC [IFPA]	HTO [IFPA]	HFD [IFPA]	DPK [IFPA]	MAD [IFPA]
38.8	HTO [IFPA]	DPK [IFPA]	ORW [IFPA]	HVN [IFPA]	CCC [IFPA]	PVD [IFPA]
39.8	HTO [IFPA]	ORW [IFPA]	PVD [IFPA]	BDR [IFPA]	HVN [IFPA]	CCC [IFPA]
49.9	HTO [IFPA]	BDR [IFPA]	MAD [IFPA]	HFD [IFPA]	PVD [IFPA]	CCC [IFPA]
52.3	MAD [IFPA]	HFD [IFPA]	PVD [IFPA]	CCC [IFPA]	BDR [IFPA]	BYT [IFPA]
59.3	BYT [IFPA]	PWL [IFPA]	BDR [IFPA]	MAD [IFPA]	CMK [IFPA]	HVN [IFPA]
65.2	BDR [IFPA]	PWL [IFPA]	BAF [IFPA]	MAD [IFPA]	CMK [IFPA]	HFD [IFPA]
69.4	BDR [IFPA]	PWL [IFPA]	HFD [IFPA]	CTR [IFPA]	IGN [IFPA]	BYT [IFPA]
79.1	IGN [IFPA]	BDR [IFPA]	MAD [IFPA]	BAF [IFPA]	CMK [IFPA]	PWL [IFPA]
82.6	IGN [IFPA]	BDR [IFPA]	BYT [IFPA]	HFD [IFPA]	CMK [IFPA]	PWL [IFPA]
84.7	HFD [IFPA]	CMK [IFPA]	PWL [IFPA]	IGN [IFPA]	BYT [IFPA]	
88.1	BYT [IFPA]	BDR [IFPA]	IGN [IFPA]	CMK [IFPA]	PWL [IFPA]	CTR [IFPA]
90.7	CMK [IFPA]	PWL [IFPA]	BYT [IFPA]	IGN [IFPA]		
92.9	IGN [IFPA]	CMK [IFPA]				
99.3	IGN [IFPA]	PWL [IFPA]	CMK [IFPA]			
102.4	IGN [IFPA]	PWL [IFPA]	HUO [IFPA]	CMK [IFPA]		
105.8	HUO [IFPA]	PWL [IFPA]	CTR [IFPA]	CMK [IFPA]	IGN [IFPA]	
107.4	HUO [IFPA]	PWL [IFPA]	CTR [IFPA]	IGN [IFPA]		
107.8	HUO [IFPA]	PWL [IFPA]	IGN [IFPA]			
108.9	IGN [IFPA]	PWL [IFPA]				
109.0	IGN [IFPA]	PWL [IFPA]	CMK [IFPA]			

Inertial Drift Segments			
#	Start Location	End Location	Length [NM]

DME DME Assessment Results for TRESA1 path DPK_JIHUN

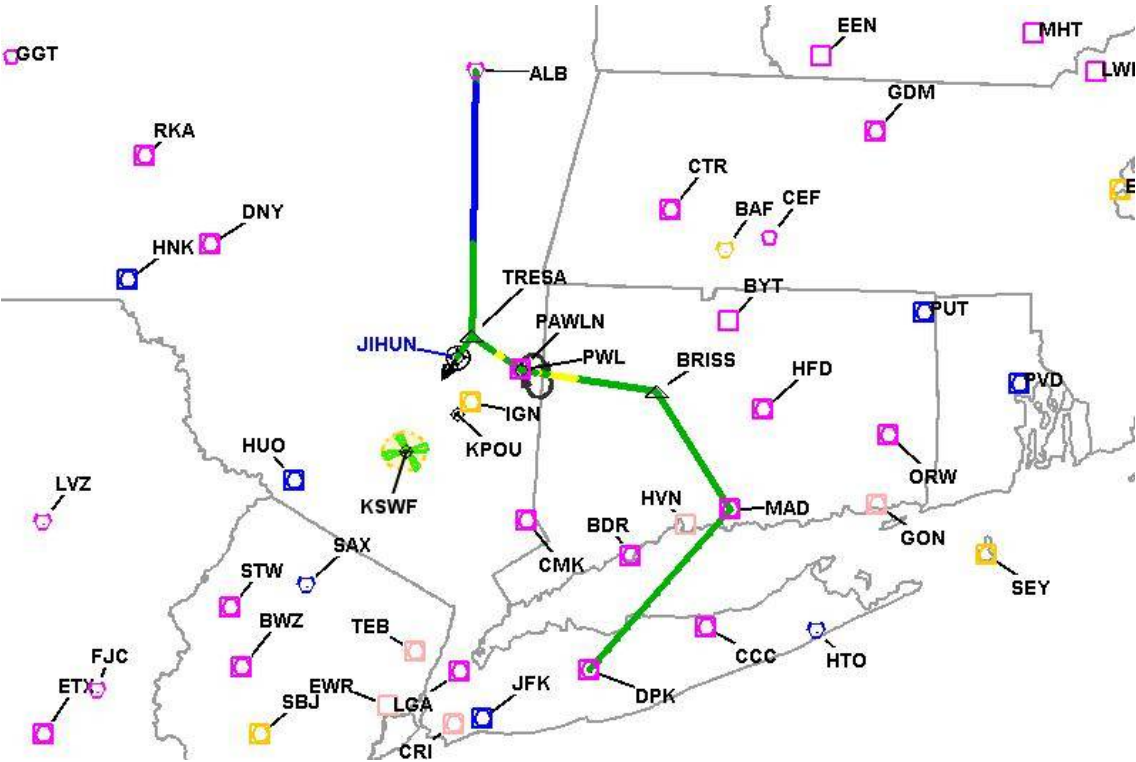
Available DMEs by Waypoints			
Waypoint Before	Waypoint After	DME List	Suggested DMEs
DPK	MAD	PVD [IFPA], HVN [IFPA], LGA [IFPA], BYT [IFPA], DPK [IFPA], HFD [IFPA], CMK [IFPA], ORW [IFPA], BDR [IFPA], CCC [IFPA], MAD [IFPA], JFK [IFPA], HTO [IFPA]	
MAD	BRISS	PVD [IFPA], HVN [IFPA], BYT [IFPA], HFD [IFPA], PWL [IFPA], CMK [IFPA], CTR [IFPA], ORW [IFPA], CCC [IFPA], BDR [IFPA], MAD [IFPA], IGN [IFPA], BAF [IFPA], HTO [IFPA]	
BRISS	PAWLN	PVD [IFPA], CTR [IFPA], BYT [IFPA], BDR [IFPA], MAD [IFPA], IGN [IFPA], HFD [IFPA], BAF [IFPA], PWL [IFPA], CMK [IFPA]	
PAWLN	TRESA	CTR [IFPA], HUO [IFPA], IGN [IFPA], PWL [IFPA], CMK [IFPA]	
TRESA	JIHUN	HUO [IFPA], IGN [IFPA], PWL [IFPA], CMK [IFPA]	

User Data Files								
#	File Name							
1	UserDMEsKPOU [IFPA] TRESA1 RNAV STAR_20240723_0938 EDT.udt							
User DMEs								
#	Name	Lat/Lon	MAGVAR	Range	Elevation [ft]	Frequency	Replaces	Status
1	UDT ESV DNY DNY [IFPA]	N42° 10' 41.8100", W074° 57' 24.9860"	11.0 W	40	2560	112.1	UDT ESV DNY	
ESV:		Bearing [True]: 50.0° to 122.0° Bearing [Mag]: 61.0° to 133.0°				Arc Distance: Out to 70.0 NM Altitude: 9000.0 to 16000.0 ft		
2	UDT ESV DNY DNY [IFPA]	N42° 10' 41.8100", W074° 57' 24.9860"	11.0 W	40	2560	112.1	UDT ESV DNY	
ESV:		Bearing [True]: 89.0° to 100.0° Bearing [Mag]: 100.0° to 111.0°				Arc Distance: Out to 56.0 NM Altitude: 5400.0 to 20600.0 ft		
3	UDT ESV PWL PWL [IFPA]	N41° 46' 11.1770", W073° 36' 01.9850"	12.0 W	40	1250	114.3	UDT ESV PWL	
ESV:		Bearing [True]: 341.0° to 357.0° Bearing [Mag]: 353.0° to 9.0°				Arc Distance: Out to 62.0 NM Altitude: 9900.0 to 19300.0 ft		
4	UDT ESV PWL PWL [IFPA]	N41° 46' 11.1770", W073° 36' 01.9850"	12.0 W	40	1250	114.3	UDT ESV PWL	
ESV:		Bearing [True]: 341.0° to 357.0° Bearing [Mag]: 353.0° to 9.0°				Arc Distance: Out to 62.0 NM Altitude: 9900.0 to 19300.0 ft		
5	UDT ESV HUO HUO [IFPA]	N41° 24' 34.8718", W074° 35' 29.7393"	11.0 W	130	1300.3	116.1	UDT ESV HUO	
ESV:		Bearing [True]: 46.0° to 55.0° Bearing [Mag]: 57.0° to 66.0°				Arc Distance: Out to 48.0 NM Altitude: 4200.0 to 15900.0 ft		
6	UDT ESV CTR CTR [IFPA]	N42° 17' 28.7470", W072° 56' 57.8190"	13.0 W	40	1600	115.1	UDT ESV CTR	
ESV:		Bearing [True]: 299.0° to 310.0° Bearing [Mag]: 312.0° to 323.0°				Arc Distance: Out to 51.0 NM Altitude: 9800.0 to 19600.0 ft		
7	UDT ESV HUO HUO [IFPA]	N41° 24' 34.8718", W074° 35' 29.7393"	11.0 W	130	1300.3	116.1	UDT ESV HUO	
ESV:		Bearing [True]: 44.0° to 59.0° Bearing [Mag]: 55.0° to 70.0°				Arc Distance: Out to 51.0 NM Altitude: 4900.0 to 15900.0 ft		
8	UDT ESV CTR CTR [IFPA]	N42° 17' 28.7470", W072° 56' 57.8190"	13.0 W	40	1600	115.1	UDT ESV CTR	
ESV:		Bearing [True]: 234.0° to 262.0° Bearing [Mag]: 247.0° to 275.0°				Arc Distance: Out to 50.0 NM Altitude: 4400.0 to 19600.0 ft		



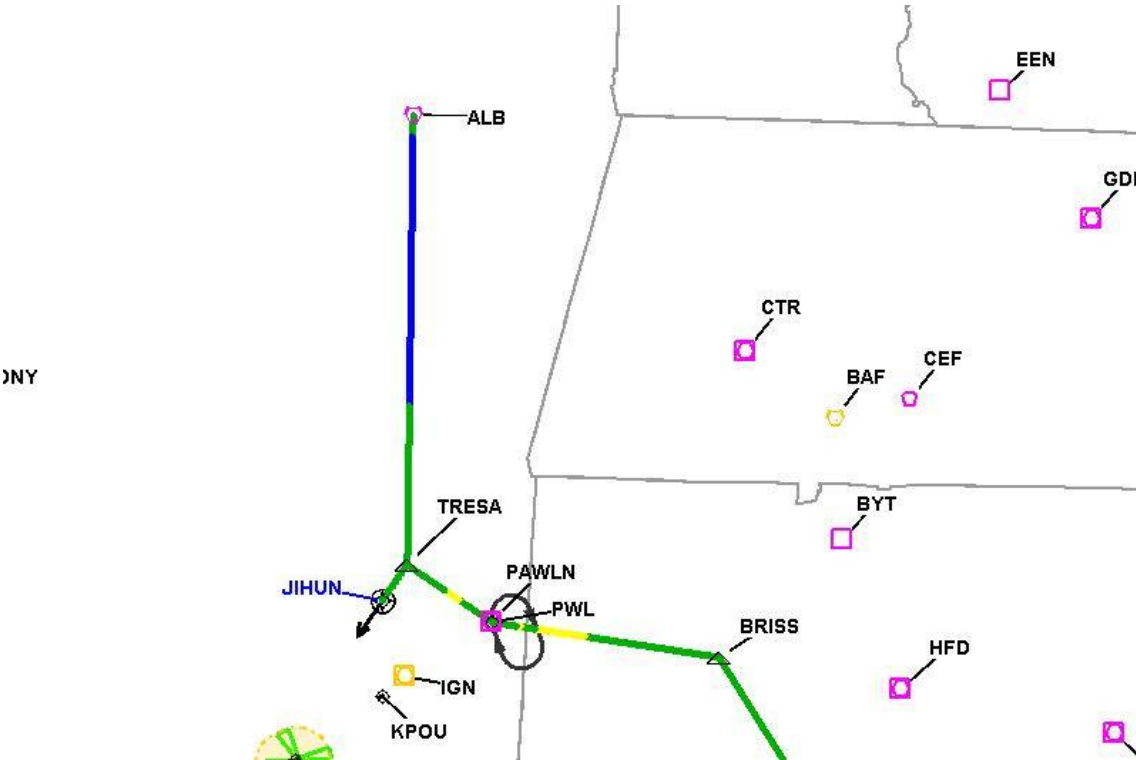
DME DME Assessment Results for TRESA1 path DPK_JIHUN

Graphic Depiction 1



DME DME Assessment Results for TRESA1 path DPK_JIHUN

Graphic Depiction 2



DME DME Assessment Results for TRESA1 path DPK_JIHUN

Graphic Depiction 3

