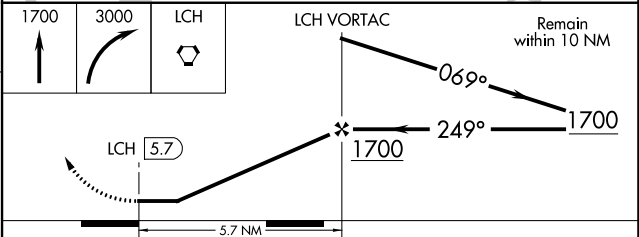
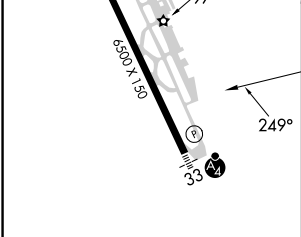
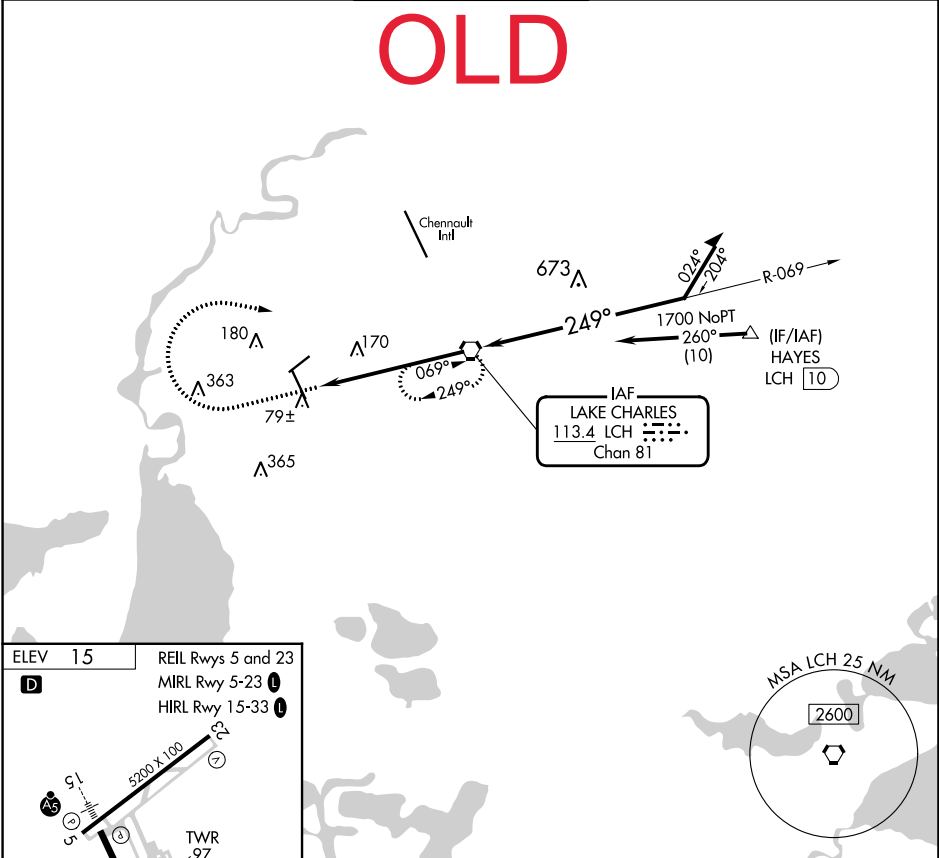


Flight Procedures Cover Page	Task Action: Amendment	Task Type: IAP	Estimated Chart Date: 02/20/2025	APWS Task ID: B7216729311E4B078671F36A65D3E6F8	APWS Project ID: 7257385C7EE24A97A5E51E04AEB3B5B9
Procedure: VOR-A AMDT 15A		Enroute: NO	Specialist: Nesbitt, Cole		Agreement Number:
Airport ID: KLCH			Airport City: LAKE CHARLES		State: LA
Facility ID:	Facility Type:	Flight Inspection Remark Type:			
<div>Procedure Comments:</div> <div>ABBREVIATED AMENDMENT COMPLETED USING ACTIVE AIRNAV DATA.</div> <div>PROCESSED IAW TECHNICAL SUPPORT GROUP (AJF-17) MEMO DATED 07/07/2021 GUIDANCE FOR PROCEDURAL CHANGES REQUIRING FLIGHT INSPECTION/VALIDATION.</div> <div>CONTACT: JOHN BORDY 405-954-0980</div> <div><div><div>QUALITY</div><div>9</div><div>CHECKED</div></div><div>BEGUE</div><div>DNC - UN-NAMED MAP</div><div><div>QUALITY</div><div>10</div><div>CHECKED</div></div></div>					

VORTAC LCH 113.4 Chan 81	APP CRS 249°	Rwy Idg TDZE Apt Elev N/A N/A 15
--	------------------------	--

VOR-A
LAKE CHARLES RGNL (LCH)

ASR		MISSED APPROACH: Climb to 1700 then climbing right turn to 3000 direct LCH VORTAC and hold, continue climb-in-hold 3000.			
ATIS 118.75	LAKE CHARLES APP CON★ 119.35 353.75	LAKE CHARLES TOWER★ 120.7 (CTAF) 257.8	GND CON 121.8	CLNC DEL 126.25	UNICOM 122.95



FAF to MAP 5.7 NM						CATEGORY	A	B	C	D
Knots	60	90	120	150	180	CIRCLING	460-1	480-1	580-1½	680-2
Min:Sec	5:42	3:48	2:51	2:17	1:54		445 (500-1)	465 (500-1)	565 (600-1½)	665 (700-2)

SC-4, 11 JUL 2024 to 08 AUG 2024

SC-4, 11 JUL 2024 to 08 AUG 2024