

DME DME Assessment Results for FEALX2 path FEALX__ZFP

Results Summary

Flyability:	Completed
DME/DME:	Completed - No Critical DMEs
Name:	David C-CTR Cook
Project File:	C:\Users\David C-CTR Cook\Documents\TARGETS WORK\DME-DME WORK\ICK FOR Liz\FOR ED MESA\FLL FEALX SID (new files loaded to F)\KFL [IFPA] FEALX2 20220224_0637 EST\KFL FEALX2 SID DME 20220224.tgs
Output File:	C:\Users\David C-CTR Cook\Documents\TARGETS WORK\DME-DME WORK\ICK FOR Liz\FOR ED MESA\FLL FEALX SID (new files loaded to F)\KFL [IFPA] FEALX2 20220224_0647 EST\FEALX__ZFP\KFL FEALX2 SID FEALX_ZFP 20220224_0647 EST.pdf
Procedure Name:	FEALX2
Software: DmeDmePlugin:	6.4.1
Date/Time:	02/24/2022 06:47 EST
Databases:	DTED 0 MAX

Failures

No Failures

Warnings

No Warnings

Notes For Flight Check

No reverse run ETECK to WOLFO, critical at beginning of route starting at ETECK.

Flight Plan

Name	Type	Lat/Lon	Altitude (ft)	VNAV Mode	Ground Speed (kts)	Turn Type	Leg Type
FEALX_	WP	N26° 17' 33.57", W079° 40' 43.63"	6000	VNAV	200	FLY_BY	TF
PRED A	WP	N26° 21' 28.69", W079° 30' 42.30"	6000	VNAV	200	FLY_BY	TF
ZFP	WP	N26° 33' 19.25", W078° 41' 52.25"	14000	VNAV	240	FLY_BY	TF
Climb Gradient: 500.0 ft/NM up to 580.0 ft MSL 200.0 ft/NM							

Flyability

Flight Type:	SID
Selected Airport:	KFL [IFPA]
Climb Gradient:	500.0 ft/NM up to 580.0 ft MSL 200.0 ft/NM
Speeds:	130 at the Runway DER
	145 at the end of the VA or VI leg
	200 Ground Speed to 11000 FT
	240 Ground Speed to 18000 FT
	260 Ground Speed to 24000 FT
	340 Ground Speed above 24000 FT
Descent During a Turn:	Allowed
VNAV Mode:	Flight Plan

DME DME Assessment Results for FEALX2 path FEALX__ZFP

DME/DME	
RNP:	RNP 2
Flight Mode:	Manual
Line of Sight (DTED Level 0 Max):	Evaluated
Inertial Drift:	Enabled
Initial Drift:	0.558 NM
INS Drift Rate:	8.0 NM/Hour
Range Mode:	OSV
RNP Edges:	Evaluated
Min DME Range:	3.0 NM
DME Types:	DME, VOR-DME, VORTAC
DME Include Angles:	30 to 150
Critical DMEs:	Not Allowed
DoD Facilities:	Not included
Foreign Facilities:	Included
High DMEs:	Included
Low DMEs:	Included
Terminal DMEs:	Included
Flight Check DMEs:	Not selected
Higher Altitudes:	Not Evaluated
Near Maximum Altitude:	Not Evaluated
Automatic ESVs:	Not enabled
Disabled DMEs:	ZGV,ZQA,ZTC

DME/DME (Continued)										
DMEs Used										
#	Name	Lat/Lon	MAGVAR	Range	Type	Source	Critical	Status	Time	Distance
1	PHK	N26° 46' 57.87", W080° 41' 29.16"	0.0 E	130	H	IFPA	NO	Enabled	4.8 %	4.8 %
2	TRV	N27° 40' 42.33", W080° 29' 23.01"	7.0 W	130	H	IFPA	NO	Enabled	1 %	1.2 %
3	ZBV	N25° 42' 15.00", W079° 17' 40.00"	4.0 W	130	H	IFPA	NO	Enabled	61.4 %	61.5 %
4	LBV	N26° 49' 41.47", W081° 23' 29.18"	1.0 E	40	L	IFPA	NO	Enabled	5.1 %	5.1 %
5	FLL	N26° 04' 26.18", W080° 09' 59.19"	6.0 W	130	H	IFPA	NO	Enabled	100 %	100 %
6	ZFP	N26° 33' 19.25", W078° 41' 52.25"	3.0 W	130	H	IFPA	NO	Enabled	41.2 %	41.1 %
7	DHP	N25° 47' 59.87", W080° 20' 56.53"	4.0 W	130	H	IFPA	NO	Enabled	91.2 %	91.1 %
8	PBI	N26° 40' 48.20", W080° 05' 11.36"	3.0 W	130	H	IFPA	NO	Enabled	100 %	100 %
9	ZGV	N25° 15' 27.00", W076° 18' 31.00"	5.0 W	130	H	IFPA	NO	Disabled		
10	ZQA	N25° 01' 31.80", W077° 26' 47.10"	6.0 W	130	H	IFPA	NO	Disabled		
11	ZTC	N26° 44' 05.00", W077° 22' 45.00"	5.0 W	130	H	IFPA	NO	Disabled		

DME DME Assessment Results for FEALX2 path FEALX__ZFP

Flight Check DME Selection						
Distance [NM]	Selected DMEs					Alternate
0.0	DHP	PBI	FLL			
15.4	DHP	PBI	FLL	ZFP		
15.9	ZBV	ZFP	FLL	DHP	PBI	
36.8	DHP	PBI	FLL			
37.9	FLL	PBI				
42.1	PBI	DHP	FLL			
42.1	ZBV	PBI	PHK	ZFP	FLL	DHP
43.4	ZBV	PBI	PHK	FLL	DHP	
44.8	ZBV	PBI	FLL	DHP		
54.5	ZBV	PBI	TRV	FLL		

Inertial Drift Segments			
#	Start Location	End Location	Length [NM]

Available DMEs by Waypoints		
Waypoint Before	Waypoint After	DME List
FEALX__	PREDATA	PBI, FLL, DHP
PREDATA	ZFP	LBV, PHK, ZFP, PBI, FLL, TRV, DHP, ZBV

DME DME Assessment Results for FEALX2 path FEALX__ZFP

User Data Files

#	File Name
1	UserDMesKFLL [IFPA] FEALX1 SID_20210317_0640 EDT.udt

DME DME Assessment Results for FEALX2 path FEALX_ZFP

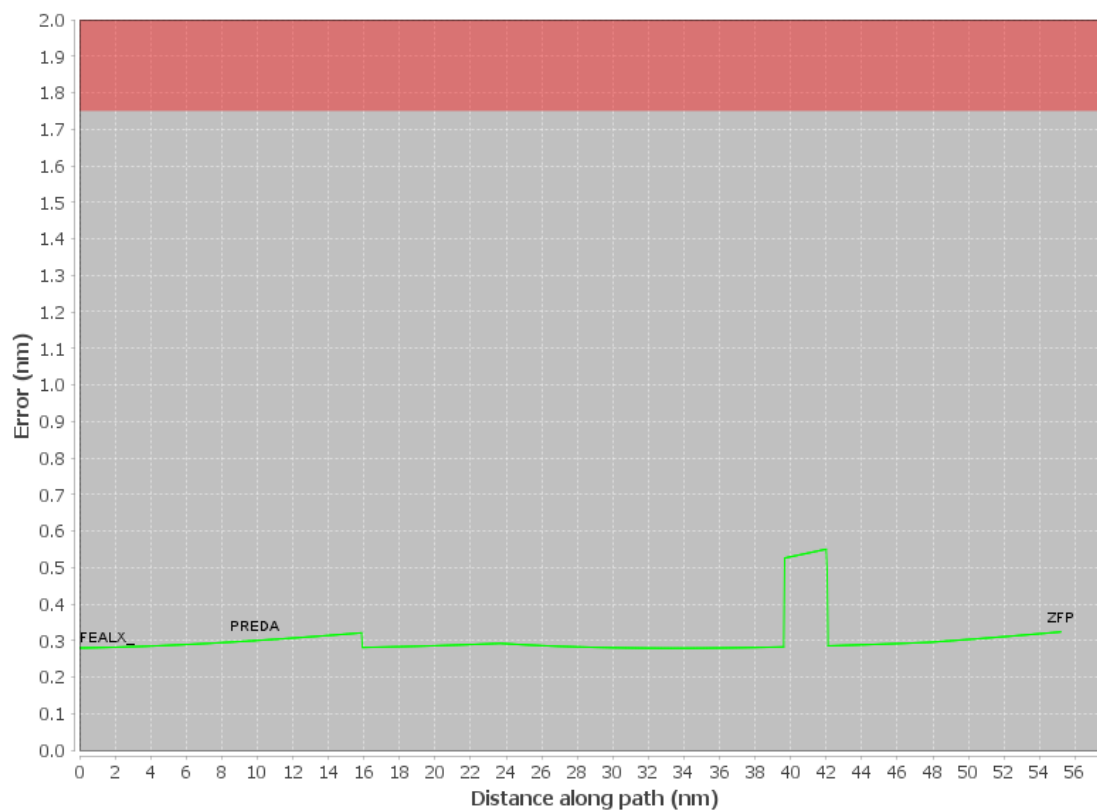
User DMEs								
#	Name	Lat/Lon	MAGVAR	Range	Elevation [ft]	Frequency	Replaces	Status
1	OMN FAA 694106-42 OMN [IFPA]	N29° 18' 11.70", W081° 06' 45.71"	0.0 E	130	24	112.6	OMN FAA 694106-42	
ESV:		Bearing [True]: 350.0° to 175.0° Bearing [Mag]: 350.0° to 175.0°				Arc Distance: Out to 155.0 NM Altitude: 18000.0 to 45000.0 ft		
2	ORL FAA 694096-066 ORL [IFPA]	N28° 32' 33.80", W081° 20' 06.05"	0.0 E	130	101.6	112.2	ORL FAA 694096-066	
ESV:		Bearing [True]: 55.0° to 115.0° Bearing [Mag]: 55.0° to 115.0°				Arc Distance: Out to 158.0 NM Altitude: 16700.0 to 18000.0 ft		
3	LBV FAA 755486-50 LBV [IFPA]	N26° 49' 41.47", W081° 23' 29.18"	1.0 E	40	30	110.4	LBV FAA 755486-50	
ESV:		Bearing [True]: 71.0° to 121.0° Bearing [Mag]: 70.0° to 120.0°				Arc Distance: Out to 123.0 NM Altitude: 10200.0 to 15000.0 ft		
4	OMN FAA 694106-55 OMN [IFPA]	N29° 18' 11.70", W081° 06' 45.71"	0.0 E	130	24	112.6	OMN FAA 694106-55	
ESV:		Bearing [True]: 105.0° to 140.0° Bearing [Mag]: 105.0° to 140.0°				Arc Distance: Out to 153.0 NM Altitude: 16000.0 to 18000.0 ft		
5	TRV FAA 704266-77 TRV [IFPA]	N27° 40' 42.33", W080° 29' 23.01"	7.0 W	130	19.5	117.3	TRV FAA 704266-77	
ESV:		Bearing [True]: 113.0° to 163.0° Bearing [Mag]: 120.0° to 170.0°				Arc Distance: Out to 90.0 NM Altitude: 6000.0 to 18000.0 ft		
6	FLL FAA 121409-15 FLL [IFPA]	N26° 04' 26.18", W080° 09' 59.19"	6.0 W	130	5.6	114.4	FLL FAA 121409-15	
ESV:		Bearing [True]: 21.0° to 98.0° Bearing [Mag]: 27.0° to 104.0°				Arc Distance: Out to 72.0 NM Altitude: 4000.0 to 14600.0 ft		
7	ZBV FAA 051542-40 ZBV [IFPA]	N25° 42' 15.00", W079° 17' 40.00"	4.0 W	130	10	116.7	ZBV FAA 051542-40	
ESV:		Bearing [True]: 355.0° to 20.0° Bearing [Mag]: 359.0° to 24.0°				Arc Distance: Out to 115.0 NM Altitude: 10000.0 to 23000.0 ft		
8	MLB FAA 191356-11 MLB [IFPA]	N28° 06' 19.12", W080° 38' 06.46"	7.0 W	130	34	115.85	MLB FAA 191356-11	
ESV:		Bearing [True]: 38.0° to 83.0° Bearing [Mag]: 45.0° to 90.0°				Arc Distance: Out to 113.0 NM Altitude: 9000.0 to 18000.0 ft		
9	TRV FAA 704266-73 TRV [IFPA]	N27° 40' 42.33", W080° 29' 23.01"	7.0 W	130	19.5	117.3	TRV FAA 704266-73	
ESV:		Bearing [True]: 63.0° to 148.0° Bearing [Mag]: 70.0° to 155.0°				Arc Distance: Out to 91.0 NM Altitude: 6000.0 to 15000.0 ft		
10	PHK FAA 900991-43 PHK [IFPA]	N26° 46' 57.87", W080° 41' 29.16"	0.0 E	130	15.5	115.4	PHK FAA 900991-43	
ESV:		Bearing [True]: 143.0° to 238.0° Bearing [Mag]: 143.0° to 238.0°				Arc Distance: Out to 55.0 NM Altitude: 3000.0 to 16000.0 ft		
11	TRV FAA 704266-78 TRV [IFPA]	N27° 40' 42.33", W080° 29' 23.01"	7.0 W	130	19.5	117.3	TRV FAA 704266-78	
ESV:		Bearing [True]: 33.0° to 93.0° Bearing [Mag]: 40.0° to 100.0°				Arc Distance: Out to 113.0 NM Altitude: 8900.0 to 18000.0 ft		
12	PBI FAA 882483-063 PBI [IFPA]	N26° 40' 48.20", W080° 05' 11.36"	3.0 W	130	15.7	115.7	PBI FAA 882483-063	
ESV:		Bearing [True]: 17.0° to 117.0° Bearing [Mag]: 20.0° to 120.0°				Arc Distance: Out to 160.0 NM Altitude: 17100.0 to 23000.0 ft		
13	TRV FAA 704266-72 TRV [IFPA]	N27° 40' 42.33", W080° 29' 23.01"	7.0 W	130	19.5	117.3	TRV FAA 704266-72	
ESV:		Bearing [True]: 23.0° to 63.0° Bearing [Mag]: 30.0° to 70.0°				Arc Distance: Out to 152.0 NM Altitude: 15700.0 to 18100.0 ft		
14	FLL FAA 121409-24 FLL [IFPA]	N26° 04' 26.18", W080° 09' 59.19"	6.0 W	130	5.6	114.4	FLL FAA 121409-24	
ESV:		Bearing [True]: 24.0° to 64.0° Bearing [Mag]: 30.0° to 70.0°				Arc Distance: Out to 72.0 NM Altitude: 3900.0 to 10000.0 ft		
15	DHP FAA 955265-47 DHP [IFPA]	N25° 47' 59.87", W080° 20' 56.53"	4.0 W	130	5.9	113.9	DHP FAA 955265-47	
ESV:		Bearing [True]: 351.0° to 96.0° Bearing [Mag]: 355.0° to 100.0°				Arc Distance: Out to 80.0 NM Altitude: 5000.0 to 13000.0 ft		
16	PBI FAA 882483-69 PBI [IFPA]	N26° 40' 48.20", W080° 05' 11.36"	3.0 W	130	15.7	115.7	PBI FAA 882483-69	
ESV:		Bearing [True]: 117.0° to 147.0° Bearing [Mag]: 120.0° to 150.0°				Arc Distance: Out to 85.0 NM Altitude: 6000.0 to 18000.0 ft		
17	DHP FAA 955265-46 DHP [IFPA]	N25° 47' 59.87", W080° 20' 56.53"	4.0 W	130	5.9	113.9	DHP FAA 955265-46	

DME DME Assessment Results for FEALX2 path FEALX_ZFP

User DMEs								
#	Name	Lat/Lon	MAGVAR	Range	Elevation [ft]	Frequency	Replaces	Status
ESV:		Bearing [True]: 16.0° to 46.0° Bearing [Mag]: 20.0° to 50.0°				Arc Distance: Out to 122.0 NM Altitude: 10400.0 to 13700.0 ft		
18	TRV FAA 704266-075 TRV [IFPA]	N27° 40' 42.33", W080° 29' 23.01"	7.0 W	130	19.5	117.3	TRV FAA 704266-075	
ESV:		Bearing [True]: 23.0° to 133.0° Bearing [Mag]: 30.0° to 140.0°				Arc Distance: Out to 160.0 NM Altitude: 17100.0 to 23000.0 ft		
19	LBV FAA 755486-44 LBV [IFPA]	N26° 49' 41.47", W081° 23' 29.18"	1.0 E	40	30	110.4	LBV FAA 755486-44	
ESV:		Bearing [True]: 11.0° to 161.0° Bearing [Mag]: 10.0° to 160.0°				Arc Distance: Out to 113.0 NM Altitude: 9000.0 to 15000.0 ft		
20	DHP FAA 955265-28 DHP [IFPA]	N25° 47' 59.87", W080° 20' 56.53"	4.0 W	130	5.9	113.9	DHP FAA 955265-28	
ESV:		Bearing [True]: 30.0° to 64.0° Bearing [Mag]: 34.0° to 68.0°				Arc Distance: Out to 84.0 NM Altitude: 7100.0 to 16000.0 ft		
21	ZBV FAA 051542-42 ZBV [IFPA]	N25° 42' 15.00", W079° 17' 40.00"	4.0 W	130	10	116.7	ZBV FAA 051542-42	
ESV:		Bearing [True]: 320.0° to 350.0° Bearing [Mag]: 324.0° to 354.0°				Arc Distance: Out to 80.0 NM Altitude: 4000.0 to 5000.0 ft		
22	FLL FAA 121409-18 FLL [IFPA]	N26° 04' 26.18", W080° 09' 59.19"	6.0 W	130	5.6	114.4	FLL FAA 121409-18	
ESV:		Bearing [True]: 24.0° to 54.0° Bearing [Mag]: 30.0° to 60.0°				Arc Distance: Out to 150.0 NM Altitude: 15100.0 to 18000.0 ft		
23	OMN FAA 694106-54 OMN [IFPA]	N29° 18' 11.70", W081° 06' 45.71"	0.0 E	130	24	112.6	OMN FAA 694106-54	
ESV:		Bearing [True]: 70.0° to 130.0° Bearing [Mag]: 70.0° to 130.0°				Arc Distance: Out to 158.0 NM Altitude: 17000.0 to 18000.0 ft		
24	ZBV FAA 051542-38 ZBV [IFPA]	N25° 42' 15.00", W079° 17' 40.00"	4.0 W	130	10	116.7	ZBV FAA 051542-38	
ESV:		Bearing [True]: 337.0° to 15.0° Bearing [Mag]: 341.0° to 19.0°				Arc Distance: Out to 60.0 NM Altitude: 7600.0 to 16000.0 ft		
25	PHK FAA 900991-44 PHK [IFPA]	N26° 46' 57.87", W080° 41' 29.16"	0.0 E	130	15.5	115.4	PHK FAA 900991-44	
ESV:		Bearing [True]: 111.0° to 145.0° Bearing [Mag]: 111.0° to 145.0°				Arc Distance: Out to 65.0 NM Altitude: 3500.0 to 16000.0 ft		
26	PBI FAA 882483-58 PBI [IFPA]	N26° 40' 48.20", W080° 05' 11.36"	3.0 W	130	15.7	115.7	PBI FAA 882483-58	
ESV:		Bearing [True]: 17.0° to 137.0° Bearing [Mag]: 20.0° to 140.0°				Arc Distance: Out to 78.0 NM Altitude: 5000.0 to 18000.0 ft		

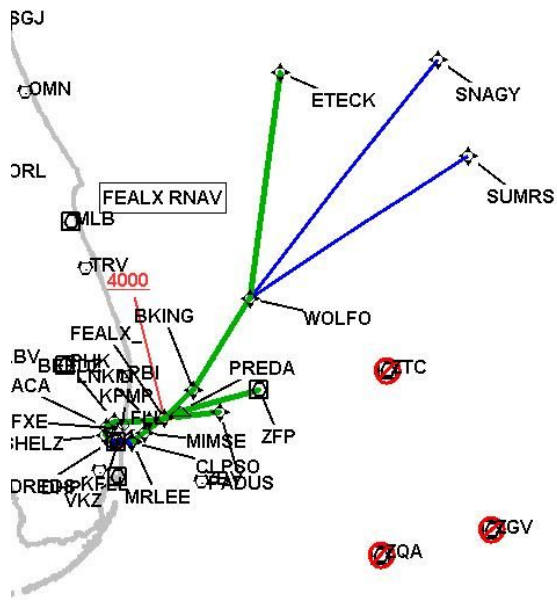
DME DME Assessment Results for FEALX2 path FEALX__ZFP

DME Error



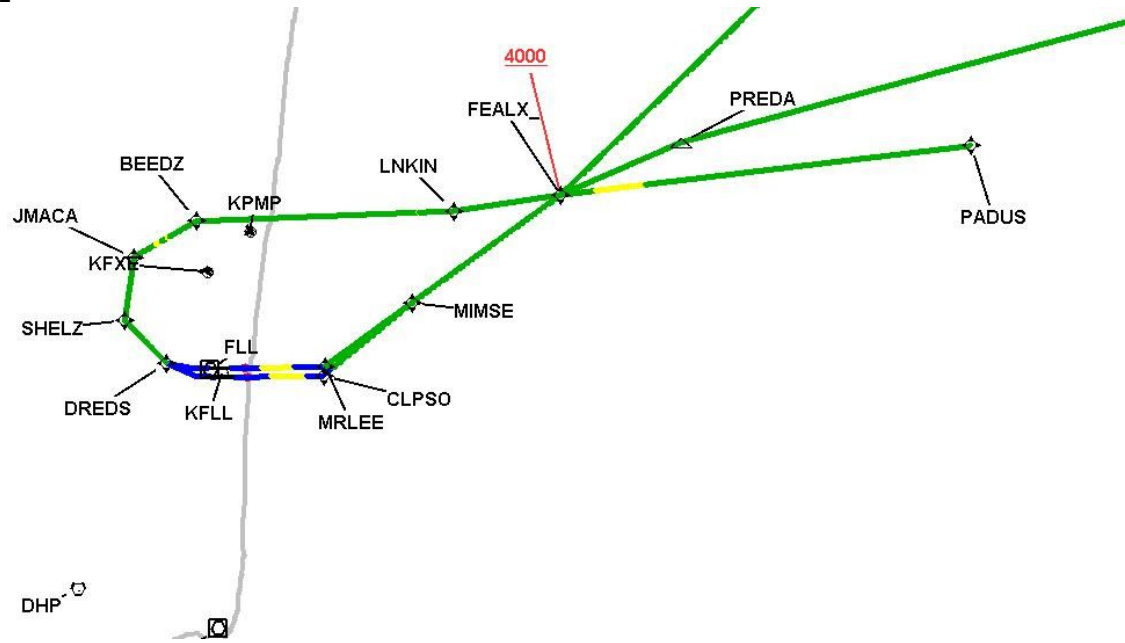
DME DME Assessment Results for FEALX2 path FEALX_ZFP

Graphic Depiction 1



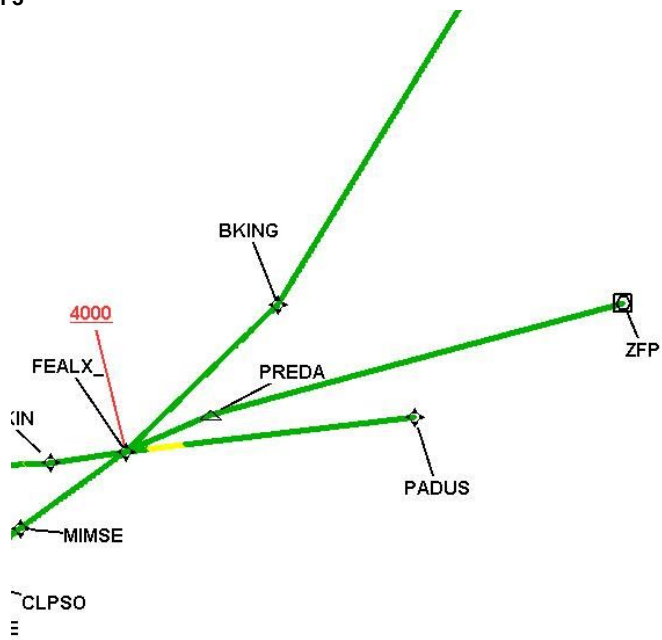
DME DME Assessment Results for FEALX2 path FEALX__ZFP

Graphic Depiction 2



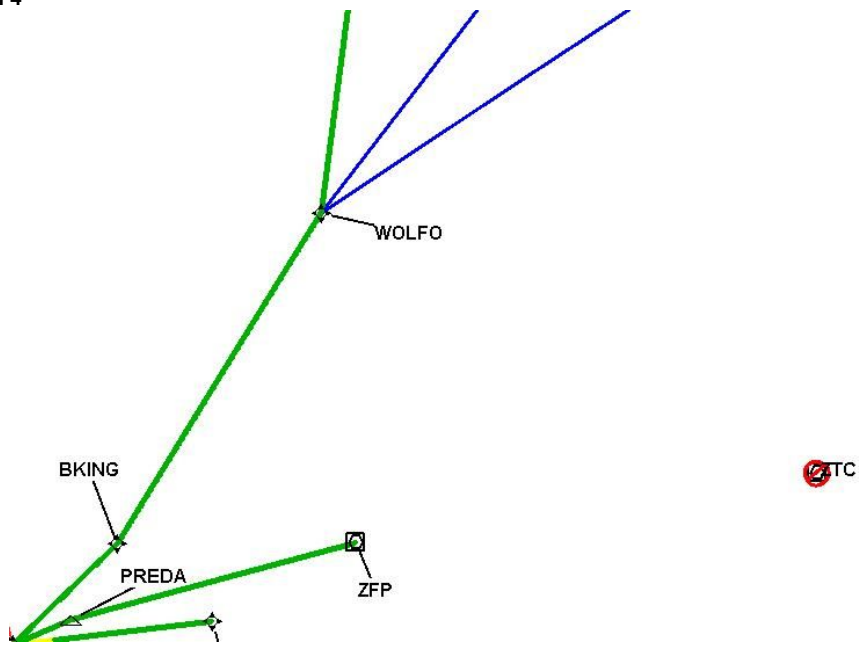
DME DME Assessment Results for FEALX2 path FEALX__ZFP

Graphic Depiction 3



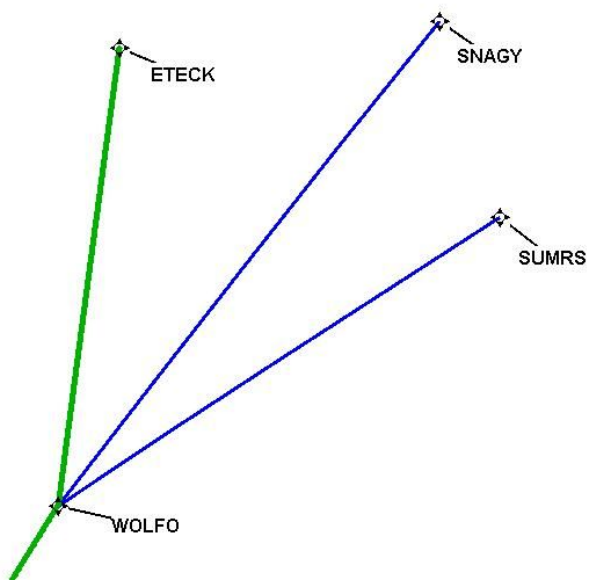
DME DME Assessment Results for FEALX2 path FEALX__ZFP

Graphic Depiction 4



DME DME Assessment Results for FEALX2 path FEALX__ZFP

Graphic Depiction 5



DME DME Assessment Results for FEALX2 path KFL:RW10L:DER_PADUS

Results Summary

Flyability:	Completed
DME/DME:	Completed - No Critical DMEs
Name:	David C-CTR Cook
Project File:	C:\Users\David C-CTR Cook\Documents\TARGETS WORK\DME-DME WORK\ICK FOR Liz\FOR ED MESA\FLL FEALX SID (new files loaded to F)\KFL [IFPA] FEALX2 20220224_0637 EST\KFL FEALX2 SID DME 20220224.tgs
Output File:	C:\Users\David C-CTR Cook\Documents\TARGETS WORK\DME-DME WORK\ICK FOR Liz\FOR ED MESA\FLL FEALX SID (new files loaded to F)\KFL [IFPA] FEALX2 20220224_0647 EST\KFL-RW10L-DER_PADUS\KFL FEALX2 SID KFL RW10L PADUS 20220224_0647 EST.pdf
Procedure Name:	FEALX2
Software: DmeDmePlugin:	6.4.1
Date/Time:	02/24/2022 06:47 EST
Databases:	DTED 0 MAX

Failures

No Failures

Warnings

No Warnings

Notes For Flight Check

No reverse run ETECK to WOLFO, critical at beginning of route starting at ETECK.

Flight Plan

Name	Type	Lat/Lon	Altitude (ft)	VNAV Mode	Ground Speed (kts)	Turn Type	Leg Type
KFL:RW10L:DER	WP	N26° 04' 36.45", W080° 08' 20.84"	5.5	VNAV	130	FLY_OVER	TF
MRLEE	WP	N26° 04' 42.12", W080° 00' 25.43"	1800	VNAV	200	FLY_BY	TF
MIMSE	WP	N26° 09' 26.79", W079° 53' 10.33"	3000	VNAV	200	FLY_BY	TF
FEALX_	WP	N26° 17' 33.57", W079° 40' 43.63"	6000	VNAV	200	FLY_BY	TF
PADUS	WP	N26° 21' 14.43", W079° 06' 30.90"	10000	VNAV	200	FLY_BY	TF

Climb Gradient:
500.0 ft/NM up to 580.0 ft MSL
200.0 ft/NM

Flyability

Flight Type:	SID
Selected Airport:	KFL [IFPA]
Climb Gradient:	500.0 ft/NM up to 580.0 ft MSL 200.0 ft/NM
Speeds:	130 at the Runway DER
	145 at the end of the VA or VI leg
	200 Ground Speed to 11000 FT
	240 Ground Speed to 18000 FT
	260 Ground Speed to 24000 FT
	340 Ground Speed above 24000 FT
Descent During a Turn:	Allowed
VNAV Mode:	Flight Plan

DME DME Assessment Results for FEALX2 path KFL:RW10L:DER_PADUS

DME/DME	
RNP:	RNP 2
Flight Mode:	Manual
Line of Sight (DTED Level 0 Max):	Evaluated
Inertial Drift:	Enabled
Initial Drift:	0.558 NM
INS Drift Rate:	8.0 NM/Hour
Range Mode:	OSV
RNP Edges:	Evaluated
Min DME Range:	3.0 NM
DME Types:	DME, VOR-DME, VORTAC
DME Include Angles:	30 to 150
Critical DMEs:	Not Allowed
DoD Facilities:	Not included
Foreign Facilities:	Included
High DMEs:	Included
Low DMEs:	Included
Terminal DMEs:	Included
Flight Check DMEs:	Not selected
Higher Altitudes:	Not Evaluated
Near Maximum Altitude:	Not Evaluated
Automatic ESVs:	Not enabled
Disabled DMEs:	ZGV,ZQA,ZTC

DME/DME (Continued)										
DMEs Used										
#	Name	Lat/Lon	MAGVAR	Range	Type	Source	Critical	Status	Time	Distance
1	PHK	N26° 46' 57.87", W080° 41' 29.16"	0.0 E	130	H	IFPA	NO	Enabled	20.2 %	21 %
2	VKZ	N25° 45' 06.85", W080° 09' 16.00"	4.0 W	130	H	IFPA	NO	Enabled	5.1 %	3.9 %
3	ZBV	N25° 42' 15.00", W079° 17' 40.00"	4.0 W	130	H	IFPA	NO	Enabled	46 %	47.7 %
4	LBV	N26° 49' 41.47", W081° 23' 29.18"	1.0 E	40	L	IFPA	NO	Enabled	0.7 %	0.7 %
5	FLL	N26° 04' 26.18", W080° 09' 59.19"	6.0 W	130	H	IFPA	NO	Enabled	90 %	92 %
6	ZFP	N26° 33' 19.25", W078° 41' 52.25"	3.0 W	130	H	IFPA	NO	Enabled	23.1 %	23.9 %
7	DHP	N25° 47' 59.87", W080° 20' 56.53"	4.0 W	130	H	IFPA	NO	Enabled	85.9 %	87.6 %
8	PBI	N26° 40' 48.20", W080° 05' 11.36"	3.0 W	130	H	IFPA	NO	Enabled	90 %	92 %
9	ZGV	N25° 15' 27.00", W076° 18' 31.00"	5.0 W	130	H	IFPA	NO	Disabled		
10	ZQA	N25° 01' 31.80", W077° 26' 47.10"	6.0 W	130	H	IFPA	NO	Disabled		
11	ZTC	N26° 44' 05.00", W077° 22' 45.00"	5.0 W	130	H	IFPA	NO	Disabled		

DME DME Assessment Results for FEALX2 path KFLL:RW10L:DER_PADUS

Flight Check DME Selection

Distance [NM]	Selected DMEs					Alternate
0.0						
2.4	FLL	PBI	VKZ	DHP		
4.8						
7.2	FLL	PBI	DHP			
17.5	FLL	PBI	PHK	DHP		
21.9	FLL	PBI	PHK			
22.5	FLL	PBI	ZBV	PHK		
24.4	DHP	ZBV	PBI	FLL	PHK	
24.5	DHP	PBI	FLL	PHK		
28.0	DHP	PBI	FLL			
29.1	DHP	PBI	FLL	PHK		
30.0	DHP	PBI	FLL			
31.6	ZBV	FLL	DHP	PBI	PHK	
32.9	ZBV	FLL	DHP	PBI		
35.4	DHP	PBI	FLL			
37.0	ZBV	FLL	DHP	PBI		
44.0	FLL	ZBV	DHP	PBI	LBV	
44.5	FLL	ZBV	DHP	PBI		
45.6	FLL	ZBV	ZFP	DHP	PBI	

Inertial Drift Segments

#	Start Location	End Location	Length [NM]
1	N26° 04' 36.44", W080° 08' 18.44"	N26° 04' 37.34", W080° 05' 38.62"	2.3961
2	N26° 04' 39.77", W080° 03' 00.69"	N26° 04' 42.12", W080° 00' 25.43"	2.3248

Available DMEs by Waypoints

Waypoint Before	Waypoint After	DME List
KFLL:RW10L:DER	MRLEE	VKZ, PBI, FLL, DHP
MRLEE	MIMSE	PBI, FLL, DHP
MIMSE	FEALX_	PHK, PBI, FLL, DHP, ZBV
FEALX_	PADUS	LBV, PHK, ZFP, PBI, FLL, DHP, ZBV

DME DME Assessment Results for FEALX2 path KFL:RW10L:DER_PADUS

User Data Files

File Name

1 UserDMesKFL [IFPA] FEALX1 SID_20210317_0640 EDT.udt

DME DME Assessment Results for FEALX2 path KFL:RW10L:DER_PADUS

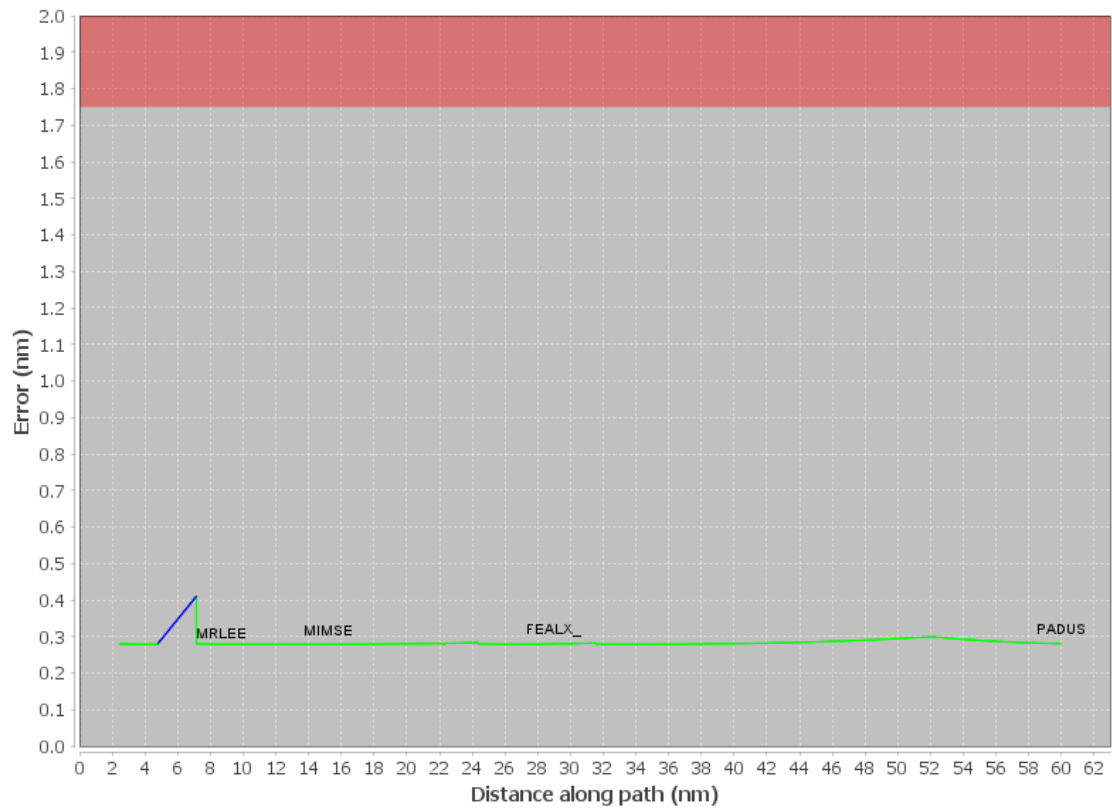
User DMEs								
#	Name	Lat/Lon	MAGVAR	Range	Elevation [ft]	Frequency	Replaces	Status
1	OMN FAA 694106-42 OMN [IFPA]	N29° 18' 11.70", W081° 06' 45.71"	0.0 E	130	24	112.6	OMN FAA 694106-42	
ESV:		Bearing [True]: 350.0° to 175.0° Bearing [Mag]: 350.0° to 175.0°				Arc Distance: Out to 155.0 NM Altitude: 18000.0 to 45000.0 ft		
2	ORL FAA 694096-066 ORL [IFPA]	N28° 32' 33.80", W081° 20' 06.05"	0.0 E	130	101.6	112.2	ORL FAA 694096-066	
ESV:		Bearing [True]: 55.0° to 115.0° Bearing [Mag]: 55.0° to 115.0°				Arc Distance: Out to 158.0 NM Altitude: 16700.0 to 18000.0 ft		
3	LBV FAA 755486-50 LBV [IFPA]	N26° 49' 41.47", W081° 23' 29.18"	1.0 E	40	30	110.4	LBV FAA 755486-50	
ESV:		Bearing [True]: 71.0° to 121.0° Bearing [Mag]: 70.0° to 120.0°				Arc Distance: Out to 123.0 NM Altitude: 10200.0 to 15000.0 ft		
4	OMN FAA 694106-55 OMN [IFPA]	N29° 18' 11.70", W081° 06' 45.71"	0.0 E	130	24	112.6	OMN FAA 694106-55	
ESV:		Bearing [True]: 105.0° to 140.0° Bearing [Mag]: 105.0° to 140.0°				Arc Distance: Out to 153.0 NM Altitude: 16000.0 to 18000.0 ft		
5	TRV FAA 704266-77 TRV [IFPA]	N27° 40' 42.33", W080° 29' 23.01"	7.0 W	130	19.5	117.3	TRV FAA 704266-77	
ESV:		Bearing [True]: 113.0° to 163.0° Bearing [Mag]: 120.0° to 170.0°				Arc Distance: Out to 90.0 NM Altitude: 6000.0 to 18000.0 ft		
6	FLL FAA 121409-15 FLL [IFPA]	N26° 04' 26.18", W080° 09' 59.19"	6.0 W	130	5.6	114.4	FLL FAA 121409-15	
ESV:		Bearing [True]: 21.0° to 98.0° Bearing [Mag]: 27.0° to 104.0°				Arc Distance: Out to 72.0 NM Altitude: 4000.0 to 14600.0 ft		
7	ZBV FAA 051542-40 ZBV [IFPA]	N25° 42' 15.00", W079° 17' 40.00"	4.0 W	130	10	116.7	ZBV FAA 051542-40	
ESV:		Bearing [True]: 355.0° to 20.0° Bearing [Mag]: 359.0° to 24.0°				Arc Distance: Out to 115.0 NM Altitude: 10000.0 to 23000.0 ft		
8	MLB FAA 191356-11 MLB [IFPA]	N28° 06' 19.12", W080° 38' 06.46"	7.0 W	130	34	115.85	MLB FAA 191356-11	
ESV:		Bearing [True]: 38.0° to 83.0° Bearing [Mag]: 45.0° to 90.0°				Arc Distance: Out to 113.0 NM Altitude: 9000.0 to 18000.0 ft		
9	TRV FAA 704266-73 TRV [IFPA]	N27° 40' 42.33", W080° 29' 23.01"	7.0 W	130	19.5	117.3	TRV FAA 704266-73	
ESV:		Bearing [True]: 63.0° to 148.0° Bearing [Mag]: 70.0° to 155.0°				Arc Distance: Out to 91.0 NM Altitude: 6000.0 to 15000.0 ft		
10	PHK FAA 900991-43 PHK [IFPA]	N26° 46' 57.87", W080° 41' 29.16"	0.0 E	130	15.5	115.4	PHK FAA 900991-43	
ESV:		Bearing [True]: 143.0° to 238.0° Bearing [Mag]: 143.0° to 238.0°				Arc Distance: Out to 55.0 NM Altitude: 3000.0 to 16000.0 ft		
11	TRV FAA 704266-78 TRV [IFPA]	N27° 40' 42.33", W080° 29' 23.01"	7.0 W	130	19.5	117.3	TRV FAA 704266-78	
ESV:		Bearing [True]: 33.0° to 93.0° Bearing [Mag]: 40.0° to 100.0°				Arc Distance: Out to 113.0 NM Altitude: 8900.0 to 18000.0 ft		
12	PBI FAA 882483-063 PBI [IFPA]	N26° 40' 48.20", W080° 05' 11.36"	3.0 W	130	15.7	115.7	PBI FAA 882483-063	
ESV:		Bearing [True]: 17.0° to 117.0° Bearing [Mag]: 20.0° to 120.0°				Arc Distance: Out to 160.0 NM Altitude: 17100.0 to 23000.0 ft		
13	TRV FAA 704266-72 TRV [IFPA]	N27° 40' 42.33", W080° 29' 23.01"	7.0 W	130	19.5	117.3	TRV FAA 704266-72	
ESV:		Bearing [True]: 23.0° to 63.0° Bearing [Mag]: 30.0° to 70.0°				Arc Distance: Out to 152.0 NM Altitude: 15700.0 to 18100.0 ft		
14	FLL FAA 121409-24 FLL [IFPA]	N26° 04' 26.18", W080° 09' 59.19"	6.0 W	130	5.6	114.4	FLL FAA 121409-24	
ESV:		Bearing [True]: 24.0° to 64.0° Bearing [Mag]: 30.0° to 70.0°				Arc Distance: Out to 72.0 NM Altitude: 3900.0 to 10000.0 ft		
15	DHP FAA 955265-47 DHP [IFPA]	N25° 47' 59.87", W080° 20' 56.53"	4.0 W	130	5.9	113.9	DHP FAA 955265-47	
ESV:		Bearing [True]: 351.0° to 96.0° Bearing [Mag]: 355.0° to 100.0°				Arc Distance: Out to 80.0 NM Altitude: 5000.0 to 13000.0 ft		
16	PBI FAA 882483-69 PBI [IFPA]	N26° 40' 48.20", W080° 05' 11.36"	3.0 W	130	15.7	115.7	PBI FAA 882483-69	
ESV:		Bearing [True]: 117.0° to 147.0° Bearing [Mag]: 120.0° to 150.0°				Arc Distance: Out to 85.0 NM Altitude: 6000.0 to 18000.0 ft		
17	DHP FAA 955265-46 DHP [IFPA]	N25° 47' 59.87", W080° 20' 56.53"	4.0 W	130	5.9	113.9	DHP FAA 955265-46	

DME DME Assessment Results for FEALX2 path KFL:RW10L:DER_PADUS

User DMEs								
#	Name	Lat/Lon	MAGVAR	Range	Elevation [ft]	Frequency	Replaces	Status
ESV:		Bearing [True]: 16.0° to 46.0° Bearing [Mag]: 20.0° to 50.0°				Arc Distance: Out to 122.0 NM Altitude: 10400.0 to 13700.0 ft		
18	TRV FAA 704266-075 TRV [IFPA]	N27° 40' 42.33", W080° 29' 23.01"	7.0 W	130	19.5	117.3	TRV FAA 704266-075	
ESV:		Bearing [True]: 23.0° to 133.0° Bearing [Mag]: 30.0° to 140.0°				Arc Distance: Out to 160.0 NM Altitude: 17100.0 to 23000.0 ft		
19	LBV FAA 755486-44 LBV [IFPA]	N26° 49' 41.47", W081° 23' 29.18"	1.0 E	40	30	110.4	LBV FAA 755486-44	
ESV:		Bearing [True]: 11.0° to 161.0° Bearing [Mag]: 10.0° to 160.0°				Arc Distance: Out to 113.0 NM Altitude: 9000.0 to 15000.0 ft		
20	DHP FAA 955265-28 DHP [IFPA]	N25° 47' 59.87", W080° 20' 56.53"	4.0 W	130	5.9	113.9	DHP FAA 955265-28	
ESV:		Bearing [True]: 30.0° to 64.0° Bearing [Mag]: 34.0° to 68.0°				Arc Distance: Out to 84.0 NM Altitude: 7100.0 to 16000.0 ft		
21	ZBV FAA 051542-42 ZBV [IFPA]	N25° 42' 15.00", W079° 17' 40.00"	4.0 W	130	10	116.7	ZBV FAA 051542-42	
ESV:		Bearing [True]: 320.0° to 350.0° Bearing [Mag]: 324.0° to 354.0°				Arc Distance: Out to 80.0 NM Altitude: 4000.0 to 5000.0 ft		
22	FLL FAA 121409-18 FLL [IFPA]	N26° 04' 26.18", W080° 09' 59.19"	6.0 W	130	5.6	114.4	FLL FAA 121409-18	
ESV:		Bearing [True]: 24.0° to 54.0° Bearing [Mag]: 30.0° to 60.0°				Arc Distance: Out to 150.0 NM Altitude: 15100.0 to 18000.0 ft		
23	OMN FAA 694106-54 OMN [IFPA]	N29° 18' 11.70", W081° 06' 45.71"	0.0 E	130	24	112.6	OMN FAA 694106-54	
ESV:		Bearing [True]: 70.0° to 130.0° Bearing [Mag]: 70.0° to 130.0°				Arc Distance: Out to 158.0 NM Altitude: 17000.0 to 18000.0 ft		
24	ZBV FAA 051542-38 ZBV [IFPA]	N25° 42' 15.00", W079° 17' 40.00"	4.0 W	130	10	116.7	ZBV FAA 051542-38	
ESV:		Bearing [True]: 337.0° to 15.0° Bearing [Mag]: 341.0° to 19.0°				Arc Distance: Out to 60.0 NM Altitude: 7600.0 to 16000.0 ft		
25	PHK FAA 900991-44 PHK [IFPA]	N26° 46' 57.87", W080° 41' 29.16"	0.0 E	130	15.5	115.4	PHK FAA 900991-44	
ESV:		Bearing [True]: 111.0° to 145.0° Bearing [Mag]: 111.0° to 145.0°				Arc Distance: Out to 65.0 NM Altitude: 3500.0 to 16000.0 ft		
26	PBI FAA 882483-58 PBI [IFPA]	N26° 40' 48.20", W080° 05' 11.36"	3.0 W	130	15.7	115.7	PBI FAA 882483-58	
ESV:		Bearing [True]: 17.0° to 137.0° Bearing [Mag]: 20.0° to 140.0°				Arc Distance: Out to 78.0 NM Altitude: 5000.0 to 18000.0 ft		

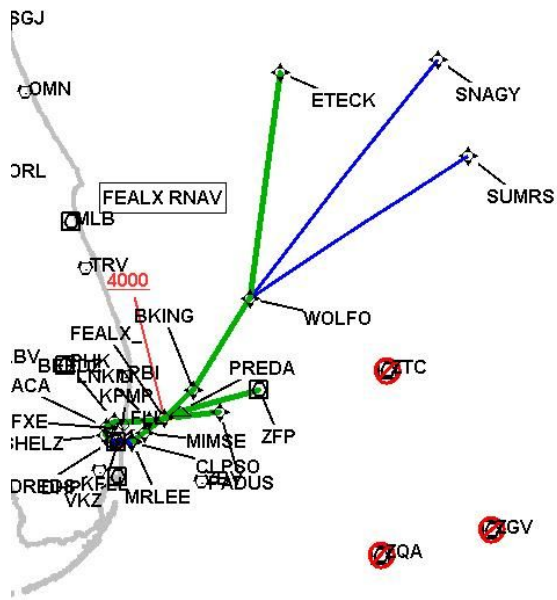
DME DME Assessment Results for FEALX2 path KFL:RW10L:DER_PADUS

DME Error



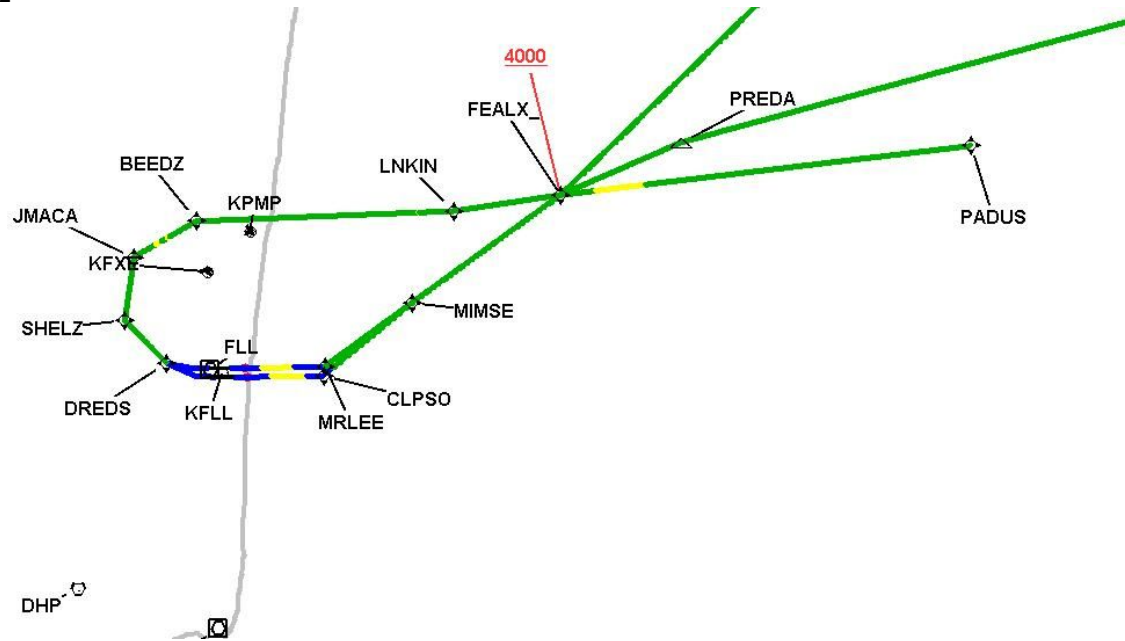
DME DME Assessment Results for FEALX2 path KFL:RW10L:DER_PADUS

Graphic Depiction 1



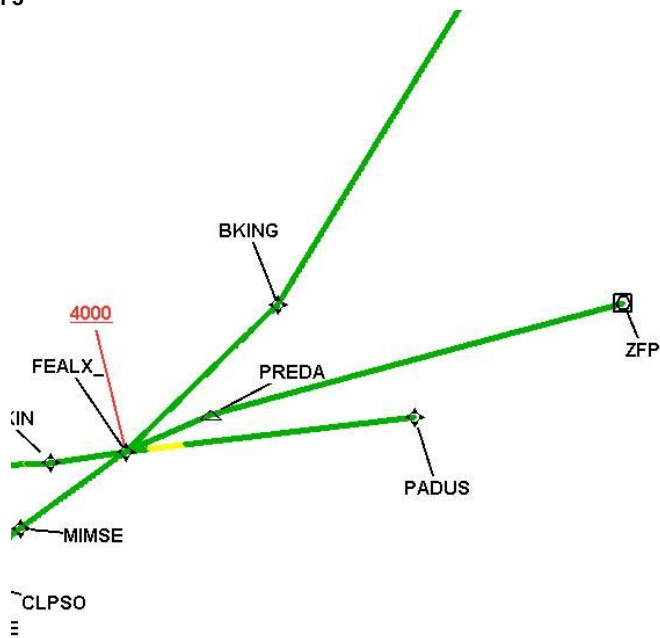
DME DME Assessment Results for FEALX2 path KFL:RW10L:DER_PADUS

Graphic Depiction 2



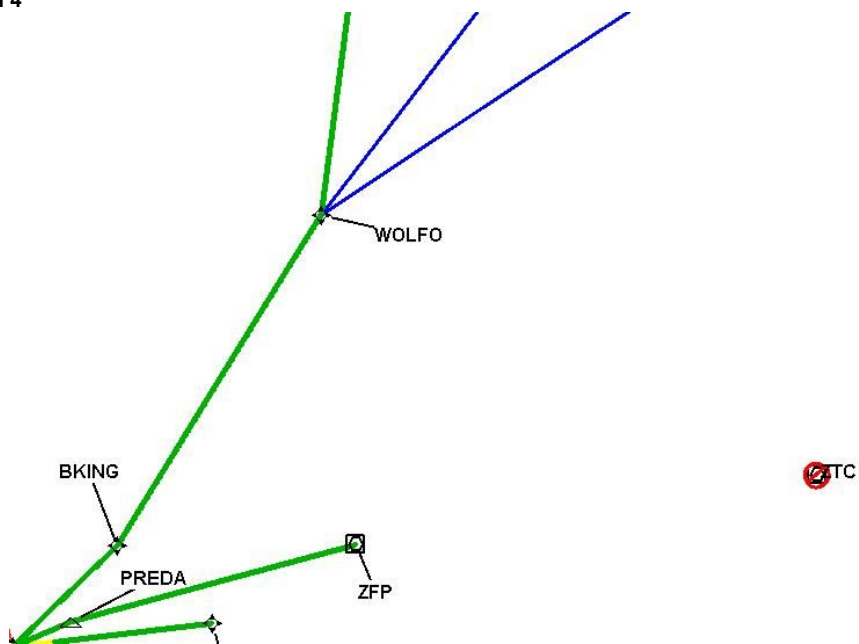
DME DME Assessment Results for FEALX2 path KFL:RW10L:DER_PADUS

Graphic Depiction 3

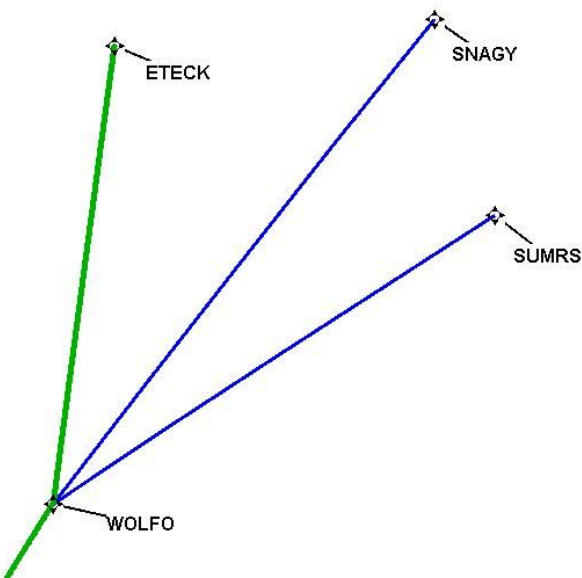


DME DME Assessment Results for FEALX2 path KFL:RW10L:DER_PADUS

Graphic Depiction 4



Graphic Depiction 5



DME DME Assessment Results for FEALX2 path KFL:RW10R:DER_MIMSE

Results Summary

Flyability:	Completed
DME/DME:	Completed - No Critical DMEs
Name:	David C-CTR Cook
Project File:	C:\Users\David C-CTR Cook\Documents\TARGETS WORK\DME-DME WORK\ICK FOR Liz\FOR ED MESA\FLL FEALX SID (new files loaded to F)\KFL [IFPA] FEALX2 20220224_0637 EST\KFL FEALX2 SID DME 20220224.tgs
Output File:	C:\Users\David C-CTR Cook\Documents\TARGETS WORK\DME-DME WORK\ICK FOR Liz\FOR ED MESA\FLL FEALX SID (new files loaded to F)\KFL [IFPA] FEALX2 20220224_0647 EST\KFL-RW10R-DER_MIMSE\KFL FEALX2 SID KFL RW10R MIMSE 20220224_0647 EST.pdf
Procedure Name:	FEALX2
Software: DmeDmePlugin:	6.4.1
Date/Time:	02/24/2022 06:47 EST
Databases:	DTED 0 MAX

Failures

No Failures

Warnings

No Warnings

Notes For Flight Check

No reverse run ETECK to WOLFO, critical at beginning of route starting at ETECK.

Flight Plan

Name	Type	Lat/Lon	Altitude (ft)	VNAV Mode	Ground Speed (kts)	Turn Type	Leg Type
KFL:RW10R:DER	WP	N26° 03' 56.67", W080° 08' 02.34"	65	VNAV	130	FLY_OVER	TF
CLPSO	WP	N26° 04' 02.18", W080° 00' 29.66"	1800	VNAV	200	FLY_BY	TF
MIMSE	WP	N26° 09' 26.79", W079° 53' 10.33"	3000	VNAV	200	FLY_BY	TF
Climb Gradient: 500.0 ft/NM up to 580.0 ft MSL 200.0 ft/NM							

Flyability

Flight Type:	SID
Selected Airport:	KFL [IFPA]
Climb Gradient:	500.0 ft/NM up to 580.0 ft MSL 200.0 ft/NM
Speeds:	130 at the Runway DER
	145 at the end of the VA or VI leg
	200 Ground Speed to 11000 FT
	240 Ground Speed to 18000 FT
	260 Ground Speed to 24000 FT
	340 Ground Speed above 24000 FT
Descent During a Turn:	Allowed
VNAV Mode:	Flight Plan

DME DME Assessment Results for FEALX2 path KLL:RW10R:DER_MIMSE

DME/DME	
RNP:	RNP 2
Flight Mode:	Manual
Line of Sight (DTED Level 0 Max):	Evaluated
Inertial Drift:	Enabled
Initial Drift:	0.558 NM
INS Drift Rate:	8.0 NM/Hour
Range Mode:	OSV
RNP Edges:	Evaluated
Min DME Range:	3.0 NM
DME Types:	DME, VOR-DME, VORTAC
DME Include Angles:	30 to 150
Critical DMEs:	Not Allowed
DoD Facilities:	Not included
Foreign Facilities:	Included
High DMEs:	Included
Low DMEs:	Included
Terminal DMEs:	Included
Flight Check DMEs:	Not selected
Higher Altitudes:	Not Evaluated
Near Maximum Altitude:	Not Evaluated
Automatic ESVs:	Not enabled
Disabled DMEs:	ZGV,ZQA,ZTC

DME/DME (Continued)										
DMEs Used										
#	Name	Lat/Lon	MAGVAR	Range	Type	Source	Critical	Status	Time	Distance
1	VKZ	N25° 45' 06.85", W080° 09' 16.00"	4.0 W	130	H	IFPA	NO	Enabled	19.7 %	17 %
2	FLL	N26° 04' 26.18", W080° 09' 59.19"	6.0 W	130	H	IFPA	NO	Enabled	63.5 %	66.9 %
3	DHP	N25° 47' 59.87", W080° 20' 56.53"	4.0 W	130	H	IFPA	NO	Enabled	63.5 %	66.9 %
4	PBI	N26° 40' 48.20", W080° 05' 11.36"	3.0 W	130	H	IFPA	NO	Enabled	63.5 %	66.9 %
5	ZGV	N25° 15' 27.00", W076° 18' 31.00"	5.0 W	130	H	IFPA	NO	Disabled		
6	ZQA	N25° 01' 31.80", W077° 26' 47.10"	6.0 W	130	H	IFPA	NO	Disabled		
7	ZTC	N26° 44' 05.00", W077° 22' 45.00"	5.0 W	130	H	IFPA	NO	Disabled		

Flight Check DME Selection						
Distance [NM]	Selected DMEs					Alternate
0.0						
2.8	VKZ	FLL	PBI	DHP		
5.5						
7.7	FLL	PBI	DHP			

Inertial Drift Segments			
#	Start Location	End Location	Length [NM]
1	N26° 03' 56.66", W080° 07' 59.97"	N26° 03' 58.14", W080° 04' 53.70"	2.7936
2	N26° 04' 00.85", W080° 01' 57.67"	N26° 04' 35.92", W079° 59' 44.05"	2.2029

Available DMEs by Waypoints		
Waypoint Before	Waypoint After	DME List
KLL:RW10R:DER	CLPSO	VKZ, PBI, FLL, DHP
CLPSO	MIMSE	PBI, FLL, DHP

DME DME Assessment Results for FEALX2 path KFL:RW10R:DER_MIMSE

User Data Files

File Name

1 UserDMesKFL [IFPA] FEALX1 SID_20210317_0640 EDT.udt

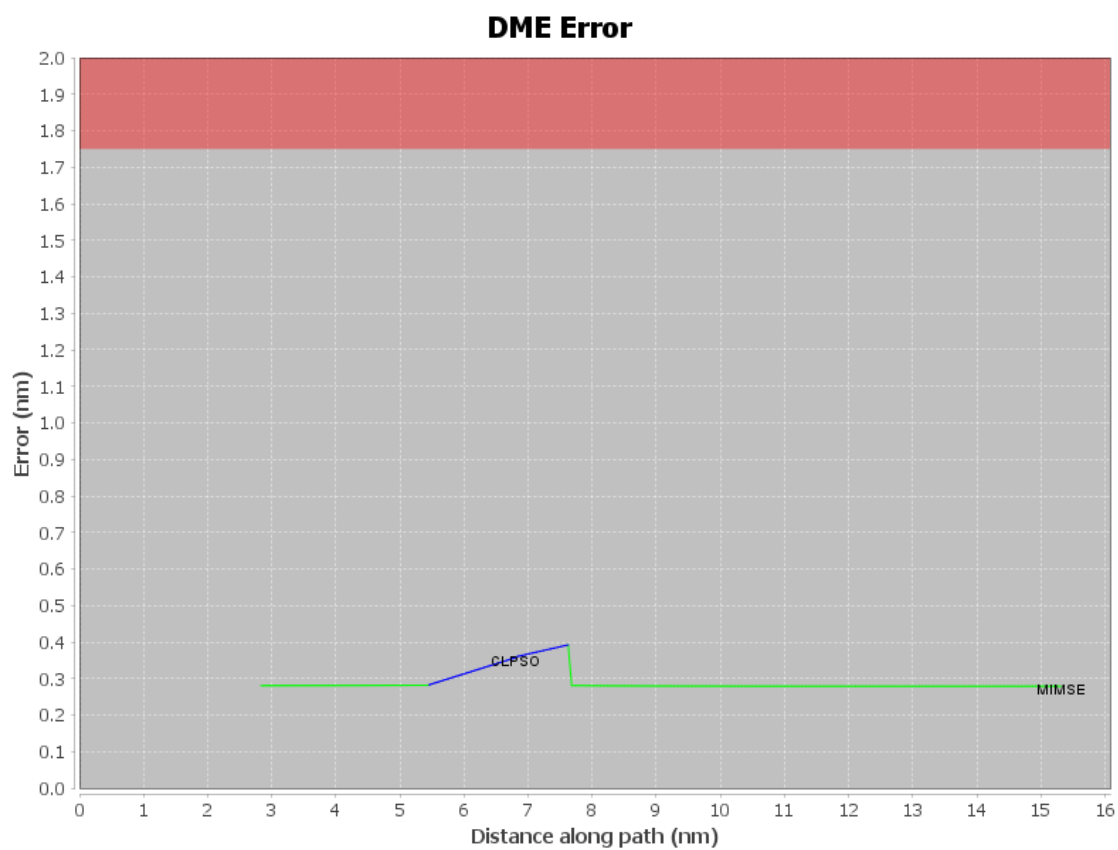
DME DME Assessment Results for FEALX2 path KFL:RW10R:DER_MIMSE

User DMEs								
#	Name	Lat/Lon	MAGVAR	Range	Elevation [ft]	Frequency	Replaces	Status
1	OMN FAA 694106-42 OMN [IFPA]	N29° 18' 11.70", W081° 06' 45.71"	0.0 E	130	24	112.6	OMN FAA 694106-42	
ESV:		Bearing [True]: 350.0° to 175.0° Bearing [Mag]: 350.0° to 175.0°				Arc Distance: Out to 155.0 NM Altitude: 18000.0 to 45000.0 ft		
2	ORL FAA 694096-066 ORL [IFPA]	N28° 32' 33.80", W081° 20' 06.05"	0.0 E	130	101.6	112.2	ORL FAA 694096-066	
ESV:		Bearing [True]: 55.0° to 115.0° Bearing [Mag]: 55.0° to 115.0°				Arc Distance: Out to 158.0 NM Altitude: 16700.0 to 18000.0 ft		
3	LBV FAA 755486-50 LBV [IFPA]	N26° 49' 41.47", W081° 23' 29.18"	1.0 E	40	30	110.4	LBV FAA 755486-50	
ESV:		Bearing [True]: 71.0° to 121.0° Bearing [Mag]: 70.0° to 120.0°				Arc Distance: Out to 123.0 NM Altitude: 10200.0 to 15000.0 ft		
4	OMN FAA 694106-55 OMN [IFPA]	N29° 18' 11.70", W081° 06' 45.71"	0.0 E	130	24	112.6	OMN FAA 694106-55	
ESV:		Bearing [True]: 105.0° to 140.0° Bearing [Mag]: 105.0° to 140.0°				Arc Distance: Out to 153.0 NM Altitude: 16000.0 to 18000.0 ft		
5	TRV FAA 704266-77 TRV [IFPA]	N27° 40' 42.33", W080° 29' 23.01"	7.0 W	130	19.5	117.3	TRV FAA 704266-77	
ESV:		Bearing [True]: 113.0° to 163.0° Bearing [Mag]: 120.0° to 170.0°				Arc Distance: Out to 90.0 NM Altitude: 6000.0 to 18000.0 ft		
6	FLL FAA 121409-15 FLL [IFPA]	N26° 04' 26.18", W080° 09' 59.19"	6.0 W	130	5.6	114.4	FLL FAA 121409-15	
ESV:		Bearing [True]: 21.0° to 98.0° Bearing [Mag]: 27.0° to 104.0°				Arc Distance: Out to 72.0 NM Altitude: 4000.0 to 14600.0 ft		
7	ZBV FAA 051542-40 ZBV [IFPA]	N25° 42' 15.00", W079° 17' 40.00"	4.0 W	130	10	116.7	ZBV FAA 051542-40	
ESV:		Bearing [True]: 355.0° to 20.0° Bearing [Mag]: 359.0° to 24.0°				Arc Distance: Out to 115.0 NM Altitude: 10000.0 to 23000.0 ft		
8	MLB FAA 191356-11 MLB [IFPA]	N28° 06' 19.12", W080° 38' 06.46"	7.0 W	130	34	115.85	MLB FAA 191356-11	
ESV:		Bearing [True]: 38.0° to 83.0° Bearing [Mag]: 45.0° to 90.0°				Arc Distance: Out to 113.0 NM Altitude: 9000.0 to 18000.0 ft		
9	TRV FAA 704266-73 TRV [IFPA]	N27° 40' 42.33", W080° 29' 23.01"	7.0 W	130	19.5	117.3	TRV FAA 704266-73	
ESV:		Bearing [True]: 63.0° to 148.0° Bearing [Mag]: 70.0° to 155.0°				Arc Distance: Out to 91.0 NM Altitude: 6000.0 to 15000.0 ft		
10	PHK FAA 900991-43 PHK [IFPA]	N26° 46' 57.87", W080° 41' 29.16"	0.0 E	130	15.5	115.4	PHK FAA 900991-43	
ESV:		Bearing [True]: 143.0° to 238.0° Bearing [Mag]: 143.0° to 238.0°				Arc Distance: Out to 55.0 NM Altitude: 3000.0 to 16000.0 ft		
11	TRV FAA 704266-78 TRV [IFPA]	N27° 40' 42.33", W080° 29' 23.01"	7.0 W	130	19.5	117.3	TRV FAA 704266-78	
ESV:		Bearing [True]: 33.0° to 93.0° Bearing [Mag]: 40.0° to 100.0°				Arc Distance: Out to 113.0 NM Altitude: 8900.0 to 18000.0 ft		
12	PBI FAA 882483-063 PBI [IFPA]	N26° 40' 48.20", W080° 05' 11.36"	3.0 W	130	15.7	115.7	PBI FAA 882483-063	
ESV:		Bearing [True]: 17.0° to 117.0° Bearing [Mag]: 20.0° to 120.0°				Arc Distance: Out to 160.0 NM Altitude: 17100.0 to 23000.0 ft		
13	TRV FAA 704266-72 TRV [IFPA]	N27° 40' 42.33", W080° 29' 23.01"	7.0 W	130	19.5	117.3	TRV FAA 704266-72	
ESV:		Bearing [True]: 23.0° to 63.0° Bearing [Mag]: 30.0° to 70.0°				Arc Distance: Out to 152.0 NM Altitude: 15700.0 to 18100.0 ft		
14	FLL FAA 121409-24 FLL [IFPA]	N26° 04' 26.18", W080° 09' 59.19"	6.0 W	130	5.6	114.4	FLL FAA 121409-24	
ESV:		Bearing [True]: 24.0° to 64.0° Bearing [Mag]: 30.0° to 70.0°				Arc Distance: Out to 72.0 NM Altitude: 3900.0 to 10000.0 ft		
15	DHP FAA 955265-47 DHP [IFPA]	N25° 47' 59.87", W080° 20' 56.53"	4.0 W	130	5.9	113.9	DHP FAA 955265-47	
ESV:		Bearing [True]: 351.0° to 96.0° Bearing [Mag]: 355.0° to 100.0°				Arc Distance: Out to 80.0 NM Altitude: 5000.0 to 13000.0 ft		
16	PBI FAA 882483-69 PBI [IFPA]	N26° 40' 48.20", W080° 05' 11.36"	3.0 W	130	15.7	115.7	PBI FAA 882483-69	
ESV:		Bearing [True]: 117.0° to 147.0° Bearing [Mag]: 120.0° to 150.0°				Arc Distance: Out to 85.0 NM Altitude: 6000.0 to 18000.0 ft		
17	DHP FAA 955265-46 DHP [IFPA]	N25° 47' 59.87", W080° 20' 56.53"	4.0 W	130	5.9	113.9	DHP FAA 955265-46	

DME DME Assessment Results for FEALX2 path KFL:RW10R:DER_MIMSE

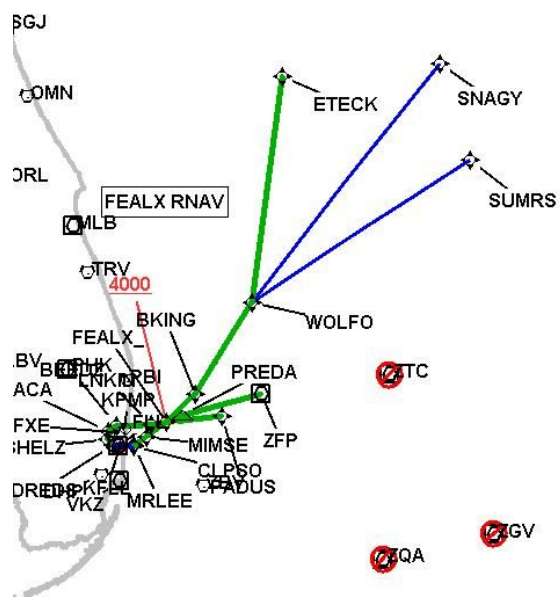
User DMEs								
#	Name	Lat/Lon	MAGVAR	Range	Elevation [ft]	Frequency	Replaces	Status
ESV:		Bearing [True]: 16.0° to 46.0° Bearing [Mag]: 20.0° to 50.0°				Arc Distance: Out to 122.0 NM Altitude: 10400.0 to 13700.0 ft		
18	TRV FAA 704266-075 TRV [IFPA]	N27° 40' 42.33", W080° 29' 23.01"	7.0 W	130	19.5	117.3	TRV FAA 704266-075	
ESV:		Bearing [True]: 23.0° to 133.0° Bearing [Mag]: 30.0° to 140.0°				Arc Distance: Out to 160.0 NM Altitude: 17100.0 to 23000.0 ft		
19	LBV FAA 755486-44 LBV [IFPA]	N26° 49' 41.47", W081° 23' 29.18"	1.0 E	40	30	110.4	LBV FAA 755486-44	
ESV:		Bearing [True]: 11.0° to 161.0° Bearing [Mag]: 10.0° to 160.0°				Arc Distance: Out to 113.0 NM Altitude: 9000.0 to 15000.0 ft		
20	DHP FAA 955265-28 DHP [IFPA]	N25° 47' 59.87", W080° 20' 56.53"	4.0 W	130	5.9	113.9	DHP FAA 955265-28	
ESV:		Bearing [True]: 30.0° to 64.0° Bearing [Mag]: 34.0° to 68.0°				Arc Distance: Out to 84.0 NM Altitude: 7100.0 to 16000.0 ft		
21	ZBV FAA 051542-42 ZBV [IFPA]	N25° 42' 15.00", W079° 17' 40.00"	4.0 W	130	10	116.7	ZBV FAA 051542-42	
ESV:		Bearing [True]: 320.0° to 350.0° Bearing [Mag]: 324.0° to 354.0°				Arc Distance: Out to 80.0 NM Altitude: 4000.0 to 5000.0 ft		
22	FLL FAA 121409-18 FLL [IFPA]	N26° 04' 26.18", W080° 09' 59.19"	6.0 W	130	5.6	114.4	FLL FAA 121409-18	
ESV:		Bearing [True]: 24.0° to 54.0° Bearing [Mag]: 30.0° to 60.0°				Arc Distance: Out to 150.0 NM Altitude: 15100.0 to 18000.0 ft		
23	OMN FAA 694106-54 OMN [IFPA]	N29° 18' 11.70", W081° 06' 45.71"	0.0 E	130	24	112.6	OMN FAA 694106-54	
ESV:		Bearing [True]: 70.0° to 130.0° Bearing [Mag]: 70.0° to 130.0°				Arc Distance: Out to 158.0 NM Altitude: 17000.0 to 18000.0 ft		
24	ZBV FAA 051542-38 ZBV [IFPA]	N25° 42' 15.00", W079° 17' 40.00"	4.0 W	130	10	116.7	ZBV FAA 051542-38	
ESV:		Bearing [True]: 337.0° to 15.0° Bearing [Mag]: 341.0° to 19.0°				Arc Distance: Out to 60.0 NM Altitude: 7600.0 to 16000.0 ft		
25	PHK FAA 900991-44 PHK [IFPA]	N26° 46' 57.87", W080° 41' 29.16"	0.0 E	130	15.5	115.4	PHK FAA 900991-44	
ESV:		Bearing [True]: 111.0° to 145.0° Bearing [Mag]: 111.0° to 145.0°				Arc Distance: Out to 65.0 NM Altitude: 3500.0 to 16000.0 ft		
26	PBI FAA 882483-58 PBI [IFPA]	N26° 40' 48.20", W080° 05' 11.36"	3.0 W	130	15.7	115.7	PBI FAA 882483-58	
ESV:		Bearing [True]: 17.0° to 137.0° Bearing [Mag]: 20.0° to 140.0°				Arc Distance: Out to 78.0 NM Altitude: 5000.0 to 18000.0 ft		

DME DME Assessment Results for FEALX2 path KFL:RW10R:DER_MIMSE



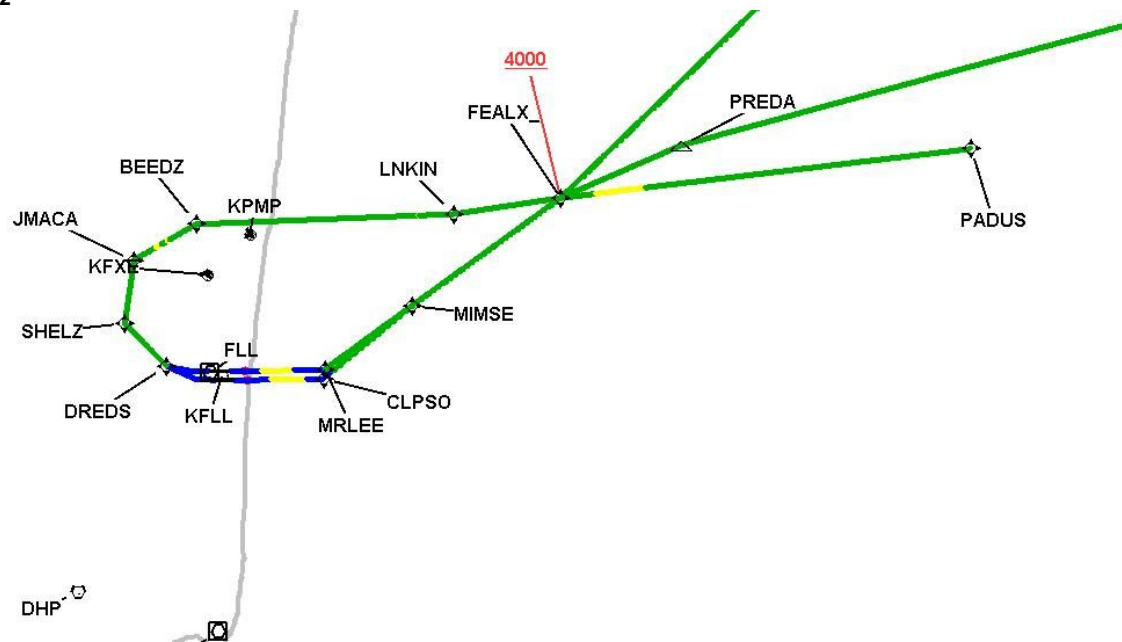
DME DME Assessment Results for FEALX2 path KFL:RW10R:DER_MIMSE

Graphic Depiction 1



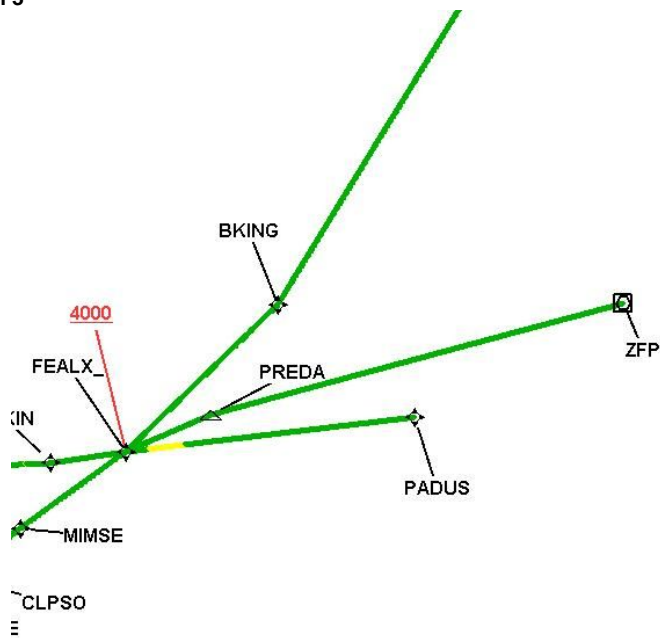
DME DME Assessment Results for FEALX2 path KFL:RW10R:DER_MIMSE

Graphic Depiction 2

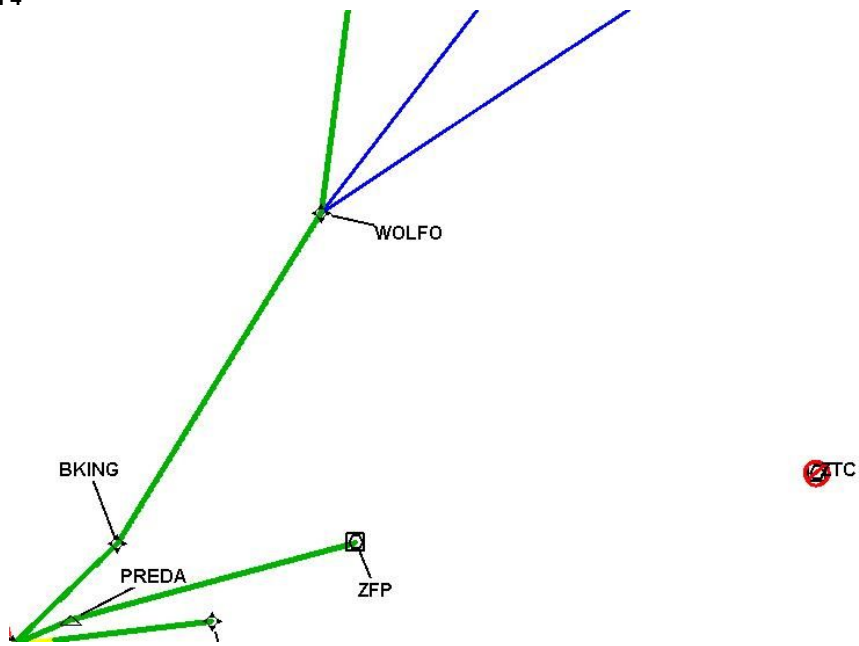


DME DME Assessment Results for FEALX2 path KFL:RW10R:DER_MIMSE

Graphic Depiction 3

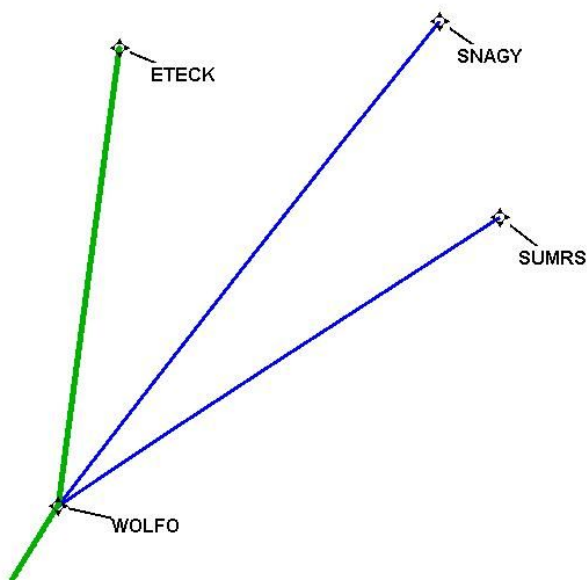


Graphic Depiction 4



DME DME Assessment Results for FEALX2 path KFL:RW10R:DER_MIMSE

Graphic Depiction 5



DME DME Assessment Results for FEALX2 path KFL:RW28L:DER_ETECK

Results Summary

Flyability:	Completed
DME/DME:	Completed - No Critical DMEs
Name:	David C-CTR Cook
Project File:	C:\Users\David C-CTR Cook\Documents\TARGETS WORK\DME-DME WORK\ICK FOR Liz\FOR ED MESA\FLL FEALX SID (new files loaded to F)\KFL [IFPA] FEALX2 20220224_0637 EST\KFL FEALX2 SID DME 20220224.tgs
Output File:	C:\Users\David C-CTR Cook\Documents\TARGETS WORK\DME-DME WORK\ICK FOR Liz\FOR ED MESA\FLL FEALX SID (new files loaded to F)\KFL [IFPA] FEALX2 20220224_0647 EST\KFL-RW28L-DER_ETECK\KFL FEALX2 SID KFL RW28L ETECK 20220224_0647 EST.pdf
Procedure Name:	FEALX2
Software: DmeDmePlugin:	6.4.1
Date/Time:	02/24/2022 06:47 EST
Databases:	DTED 0 MAX

Failures

No Failures

Warnings

No Warnings

Notes For Flight Check

No reverse run ETECK to WOLFO, critical at beginning of route starting at ETECK.

Flight Plan

Name	Type	Lat/Lon	Altitude (ft)	VNAV Mode	Ground Speed (kts)	Turn Type	Leg Type
KFL:RW28L:DER	WP	N26° 03' 57.19", W080° 09' 30.06"	10.1	VNAV	130	FLY_BY	TF
DREDS	WP	N26° 04' 56.67", W080° 13' 34.42"	1000	VNAV	200	FLY_BY	TF
SHELZ	WP	N26° 08' 10.81", W080° 17' 05.35"	2000	VNAV	200	FLY_BY	TF
JMACA	WP	N26° 12' 53.35", W080° 16' 18.65"	3000	VNAV	200	FLY_BY	TF
BEEDZ	WP	N26° 15' 35.81", W080° 11' 04.49"	4000	VNAV	200	FLY_BY	TF
LNKIN	WP	N26° 16' 21.30", W079° 49' 40.00"	5000	VNAV	200	FLY_BY	TF
FEALX_	WP	N26° 17' 33.57", W079° 40' 43.63"	6000	VNAV	200	FLY_BY	TF
BKING	WP	N26° 33' 09.15", W079° 22' 45.73"	8000	VNAV	200	FLY_BY	TF
WOLFO	WP	N27° 24' 08.43", W078° 47' 50.08"	18000	VNAV	240	FLY_BY	TF
ETECK	WP	N29° 29' 08.40", W078° 29' 14.19"	18000	VNAV	240	FLY_BY	TF

Climb Gradient:
500.0 ft/NM up to 580.0 ft MSL
200.0 ft/NM

DME DME Assessment Results for FEALX2 path KFL:RW28L:DER_ETECK

Flyability	
Flight Type:	SID
Selected Airport:	KFL (IFPA)
Climb Gradient:	500.0 ft/NM up to 580.0 ft MSL 200.0 ft/NM
Speeds:	130 at the Runway DER
	145 at the end of the VA or VI leg
	200 Ground Speed to 11000 FT
	240 Ground Speed to 18000 FT
	260 Ground Speed to 24000 FT
	340 Ground Speed above 24000 FT
Descent During a Turn:	Allowed
VNAV Mode:	Flight Plan

DME/DME	
RNP:	RNP 2
Flight Mode:	Manual
Line of Sight (DTED Level 0 Max):	Evaluated
Inertial Drift:	Enabled
Initial Drift:	0.558 NM
INS Drift Rate:	8.0 NM/Hour
Range Mode:	OSV
RNP Edges:	Evaluated
Min DME Range:	3.0 NM
DME Types:	DME, VOR-DME, VORTAC
DME Include Angles:	30 to 150
Critical DMEs:	Not Allowed
DoD Facilities:	Not included
Foreign Facilities:	Included
High DMEs:	Included
Low DMEs:	Included
Terminal DMEs:	Included
Flight Check DMEs:	Not selected
Higher Altitudes:	Not Evaluated
Near Maximum Altitude:	Not Evaluated
Automatic ESVs:	Not enabled
Disabled DMEs:	ZGV,ZQA,ZTC

DME DME Assessment Results for FEALX2 path KFL:RW28L:DER_ETECK

DME/DME (Continued)										
DMEs Used										
#	Name	Lat/Lon	MAGVAR	Range	Type	Source	Critical	Status	Time	Distance
1	PHK	N26° 46' 57.87", W080° 41' 29.16"	0.0 E	130	H	IFPA	NO	Enabled	16.7 %	15.3 %
2	TRV	N27° 40' 42.33", W080° 29' 23.01"	7.0 W	130	H	IFPA	NO	Enabled	65.2 %	68.5 %
3	OMN	N29° 18' 11.70", W081° 06' 45.71"	0.0 E	130	H	IFPA	NO	Enabled	36.4 %	40.3 %
4	VKZ	N25° 45' 06.85", W080° 09' 16.00"	4.0 W	130	H	IFPA	NO	Enabled	4.8 %	4.4 %
5	ZBV	N25° 42' 15.00", W079° 17' 40.00"	4.0 W	130	H	IFPA	NO	Enabled	27 %	24.9 %
6	LBV	N26° 49' 41.47", W081° 23' 29.18"	1.0 E	40	L	IFPA	NO	Enabled	4.1 %	3.8 %
7	MLB	N28° 06' 19.12", W080° 38' 06.46"	7.0 W	130	H	IFPA	NO	Enabled	4.8 %	5.3 %
8	FLL	N26° 04' 26.18", W080° 09' 59.19"	6.0 W	130	H	IFPA	NO	Enabled	48.7 %	46.4 %
9	ZFP	N26° 33' 19.25", W078° 41' 52.25"	3.0 W	130	H	IFPA	NO	Enabled	42.9 %	42.8 %
10	DHP	N25° 47' 59.87", W080° 20' 56.53"	4.0 W	130	H	IFPA	NO	Enabled	34.1 %	31.4 %
11	PBI	N26° 40' 48.20", W080° 05' 11.36"	3.0 W	130	H	IFPA	NO	Enabled	84.6 %	84.1 %
12	ORL	N28° 32' 33.80", W081° 20' 06.05"	0.0 E	130	H	IFPA	NO	Enabled	25.3 %	27.9 %
13	ZGV	N25° 15' 27.00", W076° 18' 31.00"	5.0 W	130	H	IFPA	NO	Disabled		
14	ZQA	N25° 01' 31.80", W077° 26' 47.10"	6.0 W	130	H	IFPA	NO	Disabled		
15	ZTC	N26° 44' 05.00", W077° 22' 45.00"	5.0 W	130	H	IFPA	NO	Disabled		

DME DME Assessment Results for FEALX2 path KFL:RW28L:DER_ETECK

Flight Check DME Selection						
Distance [NM]	Selected DMEs					Alternate
0.0						
3.6	FLL	DHP				
5.7	FLL	DHP	PBI			
11.3	FLL	DHP				
13.2	FLL	PBI	PHK	DHP		
15.5	FLL	DHP				
15.9	PHK	PBI	DHP	FLL		
16.1	PHK	PBI	DHP	FLL	VKZ	
16.2	PHK	PBI	DHP			
16.6	PHK	DHP	PBI	VKZ		
18.5	PHK	DHP	PBI	VKZ	FLL	
27.8	PHK	FLL	DHP	PBI		
33.7	PHK	FLL	PBI			
35.1	PHK	DHP	FLL	PBI		
35.3	FLL	PBI	PHK			
37.8	FLL	PBI	DHP	PHK		
46.0	DHP	PBI	FLL			
54.0	ZBV	FLL	DHP	PBI		
67.6	ZBV	ZFP	PBI	FLL	DHP	
68.4	ZBV	PBI	FLL	DHP		
68.5	ZBV	ZFP	PBI	FLL	DHP	
76.4	DHP	ZFP	FLL	PBI		
80.0	FLL	TRV	DHP	ZFP	PBI	
82.8	ZBV	PBI	ZFP	FLL	TRV	LBV
89.2	ZBV	PBI	ZFP	TRV	LBV	
91.2	ZBV	PBI	ZFP	TRV		
97.6	PBI	ZFP	ZBV	DHP	TRV	
102.4	PBI	ZFP	TRV	ZBV		
106.7	ZBV	TRV	PBI			
107.3	ZFP	FLL	ZBV			
107.3	ZFP	PBI	PHK	FLL	TRV	ZBV
114.0	ZFP	PBI	TRV	ZBV	FLL	
118.6	ZFP	PBI	TRV	ZBV		
121.1	ZFP	PBI	TRV			
150.7	TRV	ZFP	PBI	ORL	FLL	
174.0	TRV	ZFP	ORL	OMN	PBI	
176.9	OMN	PBI	ORL	TRV		
183.5	OMN	PBI	ORL	MLB	TRV	
197.1	OMN	PBI	ORL	TRV		
221.6	OMN	TRV				

Inertial Drift Segments			
#	Start Location	End Location	Length [NM]
1	N26° 03' 57.21", W080° 09' 32.43"	N26° 04' 50.88", W080° 13' 19.77"	3.5935

Available DMEs by Waypoints		
Waypoint Before	Waypoint After	DME List
KFL:RW28L:DER	DREDS	FLL, DHP
DREDS	SHELZ	PBI, FLL, DHP
SHELZ	JMACA	PBI, FLL, DHP
JMACA	BEEDZ	PHK, VKZ, PBI, FLL, DHP
BEEDZ	LNKIN	PHK, VKZ, PBI, FLL, DHP
LNKIN	FEALX_	PHK, PBI, FLL, DHP
FEALX_	BKING	ZFP, PBI, FLL, DHP, ZBV
BKING	WOLFO	LBV, PHK, ZFP, PBI, FLL, TRV, DHP, ZBV
WOLFO	ETECK	OMN, MLB, ZFP, PBI, FLL, ORL, TRV

DME DME Assessment Results for FEALX2 path KFL:RW28L:DER_ETECK

User Data Files

File Name

1 UserDMesKFL [IFPA] FEALX1 SID_20210317_0640 EDT.udt

DME DME Assessment Results for FEALX2 path KFL:RW28L:DER_ETECK

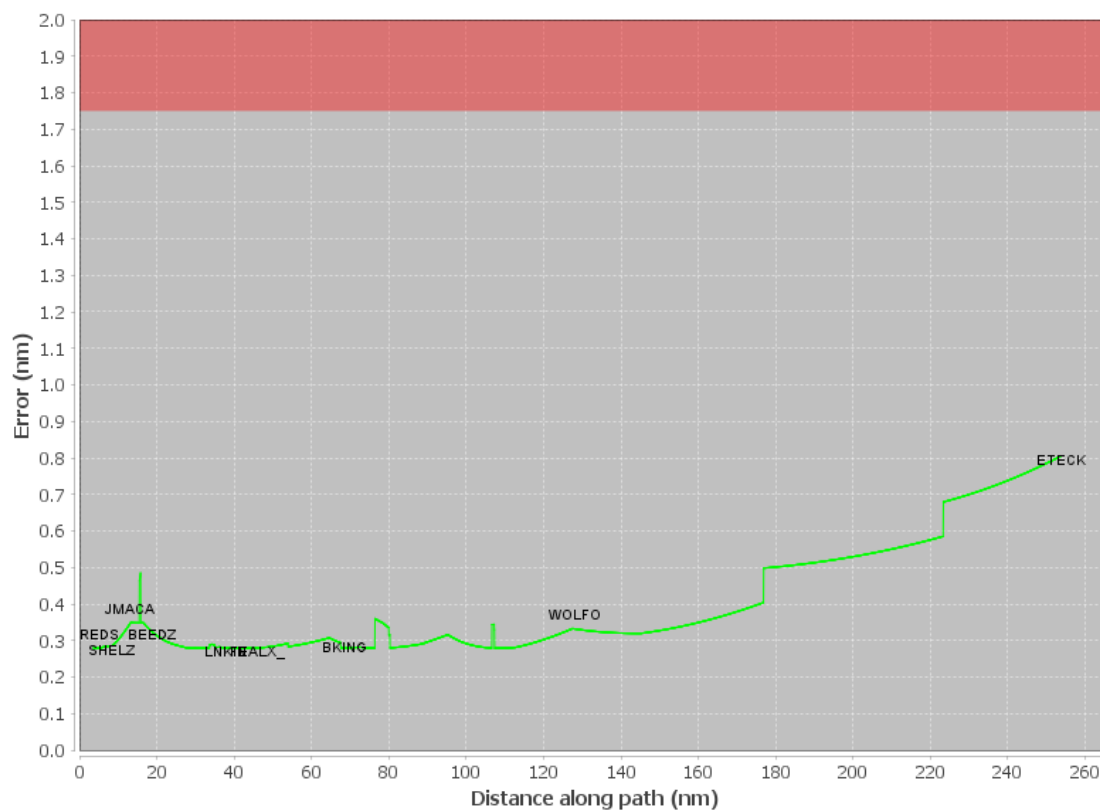
User DMEs								
#	Name	Lat/Lon	MAGVAR	Range	Elevation [ft]	Frequency	Replaces	Status
1	OMN FAA 694106-42 OMN [IFPA]	N29° 18' 11.70", W081° 06' 45.71"	0.0 E	130	24	112.6	OMN FAA 694106-42	
ESV:		Bearing [True]: 350.0° to 175.0° Bearing [Mag]: 350.0° to 175.0°				Arc Distance: Out to 155.0 NM Altitude: 18000.0 to 45000.0 ft		
2	ORL FAA 694096-066 ORL [IFPA]	N28° 32' 33.80", W081° 20' 06.05"	0.0 E	130	101.6	112.2	ORL FAA 694096-066	
ESV:		Bearing [True]: 55.0° to 115.0° Bearing [Mag]: 55.0° to 115.0°				Arc Distance: Out to 158.0 NM Altitude: 16700.0 to 18000.0 ft		
3	LBV FAA 755486-50 LBV [IFPA]	N26° 49' 41.47", W081° 23' 29.18"	1.0 E	40	30	110.4	LBV FAA 755486-50	
ESV:		Bearing [True]: 71.0° to 121.0° Bearing [Mag]: 70.0° to 120.0°				Arc Distance: Out to 123.0 NM Altitude: 10200.0 to 15000.0 ft		
4	OMN FAA 694106-55 OMN [IFPA]	N29° 18' 11.70", W081° 06' 45.71"	0.0 E	130	24	112.6	OMN FAA 694106-55	
ESV:		Bearing [True]: 105.0° to 140.0° Bearing [Mag]: 105.0° to 140.0°				Arc Distance: Out to 153.0 NM Altitude: 16000.0 to 18000.0 ft		
5	TRV FAA 704266-77 TRV [IFPA]	N27° 40' 42.33", W080° 29' 23.01"	7.0 W	130	19.5	117.3	TRV FAA 704266-77	
ESV:		Bearing [True]: 113.0° to 163.0° Bearing [Mag]: 120.0° to 170.0°				Arc Distance: Out to 90.0 NM Altitude: 6000.0 to 18000.0 ft		
6	FLL FAA 121409-15 FLL [IFPA]	N26° 04' 26.18", W080° 09' 59.19"	6.0 W	130	5.6	114.4	FLL FAA 121409-15	
ESV:		Bearing [True]: 21.0° to 98.0° Bearing [Mag]: 27.0° to 104.0°				Arc Distance: Out to 72.0 NM Altitude: 4000.0 to 14600.0 ft		
7	ZBV FAA 051542-40 ZBV [IFPA]	N25° 42' 15.00", W079° 17' 40.00"	4.0 W	130	10	116.7	ZBV FAA 051542-40	
ESV:		Bearing [True]: 355.0° to 20.0° Bearing [Mag]: 359.0° to 24.0°				Arc Distance: Out to 115.0 NM Altitude: 10000.0 to 23000.0 ft		
8	MLB FAA 191356-11 MLB [IFPA]	N28° 06' 19.12", W080° 38' 06.46"	7.0 W	130	34	115.85	MLB FAA 191356-11	
ESV:		Bearing [True]: 38.0° to 83.0° Bearing [Mag]: 45.0° to 90.0°				Arc Distance: Out to 113.0 NM Altitude: 9000.0 to 18000.0 ft		
9	TRV FAA 704266-73 TRV [IFPA]	N27° 40' 42.33", W080° 29' 23.01"	7.0 W	130	19.5	117.3	TRV FAA 704266-73	
ESV:		Bearing [True]: 63.0° to 148.0° Bearing [Mag]: 70.0° to 155.0°				Arc Distance: Out to 91.0 NM Altitude: 6000.0 to 15000.0 ft		
10	PHK FAA 900991-43 PHK [IFPA]	N26° 46' 57.87", W080° 41' 29.16"	0.0 E	130	15.5	115.4	PHK FAA 900991-43	
ESV:		Bearing [True]: 143.0° to 238.0° Bearing [Mag]: 143.0° to 238.0°				Arc Distance: Out to 55.0 NM Altitude: 3000.0 to 16000.0 ft		
11	TRV FAA 704266-78 TRV [IFPA]	N27° 40' 42.33", W080° 29' 23.01"	7.0 W	130	19.5	117.3	TRV FAA 704266-78	
ESV:		Bearing [True]: 33.0° to 93.0° Bearing [Mag]: 40.0° to 100.0°				Arc Distance: Out to 113.0 NM Altitude: 8900.0 to 18000.0 ft		
12	PBI FAA 882483-063 PBI [IFPA]	N26° 40' 48.20", W080° 05' 11.36"	3.0 W	130	15.7	115.7	PBI FAA 882483-063	
ESV:		Bearing [True]: 17.0° to 117.0° Bearing [Mag]: 20.0° to 120.0°				Arc Distance: Out to 160.0 NM Altitude: 17100.0 to 23000.0 ft		
13	TRV FAA 704266-72 TRV [IFPA]	N27° 40' 42.33", W080° 29' 23.01"	7.0 W	130	19.5	117.3	TRV FAA 704266-72	
ESV:		Bearing [True]: 23.0° to 63.0° Bearing [Mag]: 30.0° to 70.0°				Arc Distance: Out to 152.0 NM Altitude: 15700.0 to 18100.0 ft		
14	FLL FAA 121409-24 FLL [IFPA]	N26° 04' 26.18", W080° 09' 59.19"	6.0 W	130	5.6	114.4	FLL FAA 121409-24	
ESV:		Bearing [True]: 24.0° to 64.0° Bearing [Mag]: 30.0° to 70.0°				Arc Distance: Out to 72.0 NM Altitude: 3900.0 to 10000.0 ft		
15	DHP FAA 955265-47 DHP [IFPA]	N25° 47' 59.87", W080° 20' 56.53"	4.0 W	130	5.9	113.9	DHP FAA 955265-47	
ESV:		Bearing [True]: 351.0° to 96.0° Bearing [Mag]: 355.0° to 100.0°				Arc Distance: Out to 80.0 NM Altitude: 5000.0 to 13000.0 ft		
16	PBI FAA 882483-69 PBI [IFPA]	N26° 40' 48.20", W080° 05' 11.36"	3.0 W	130	15.7	115.7	PBI FAA 882483-69	
ESV:		Bearing [True]: 117.0° to 147.0° Bearing [Mag]: 120.0° to 150.0°				Arc Distance: Out to 85.0 NM Altitude: 6000.0 to 18000.0 ft		
17	DHP FAA 955265-46 DHP [IFPA]	N25° 47' 59.87", W080° 20' 56.53"	4.0 W	130	5.9	113.9	DHP FAA 955265-46	

DME DME Assessment Results for FEALX2 path KFL:RW28L:DER_ETECK

User DMEs								
#	Name	Lat/Lon	MAGVAR	Range	Elevation [ft]	Frequency	Replaces	Status
ESV:		Bearing [True]: 16.0° to 46.0° Bearing [Mag]: 20.0° to 50.0°				Arc Distance: Out to 122.0 NM Altitude: 10400.0 to 13700.0 ft		
18	TRV FAA 704266-075 TRV [IFPA]	N27° 40' 42.33", W080° 29' 23.01"	7.0 W	130	19.5	117.3	TRV FAA 704266-075	
ESV:		Bearing [True]: 23.0° to 133.0° Bearing [Mag]: 30.0° to 140.0°				Arc Distance: Out to 160.0 NM Altitude: 17100.0 to 23000.0 ft		
19	LBV FAA 755486-44 LBV [IFPA]	N26° 49' 41.47", W081° 23' 29.18"	1.0 E	40	30	110.4	LBV FAA 755486-44	
ESV:		Bearing [True]: 11.0° to 161.0° Bearing [Mag]: 10.0° to 160.0°				Arc Distance: Out to 113.0 NM Altitude: 9000.0 to 15000.0 ft		
20	DHP FAA 955265-28 DHP [IFPA]	N25° 47' 59.87", W080° 20' 56.53"	4.0 W	130	5.9	113.9	DHP FAA 955265-28	
ESV:		Bearing [True]: 30.0° to 64.0° Bearing [Mag]: 34.0° to 68.0°				Arc Distance: Out to 84.0 NM Altitude: 7100.0 to 16000.0 ft		
21	ZBV FAA 051542-42 ZBV [IFPA]	N25° 42' 15.00", W079° 17' 40.00"	4.0 W	130	10	116.7	ZBV FAA 051542-42	
ESV:		Bearing [True]: 320.0° to 350.0° Bearing [Mag]: 324.0° to 354.0°				Arc Distance: Out to 80.0 NM Altitude: 4000.0 to 5000.0 ft		
22	FLL FAA 121409-18 FLL [IFPA]	N26° 04' 26.18", W080° 09' 59.19"	6.0 W	130	5.6	114.4	FLL FAA 121409-18	
ESV:		Bearing [True]: 24.0° to 54.0° Bearing [Mag]: 30.0° to 60.0°				Arc Distance: Out to 150.0 NM Altitude: 15100.0 to 18000.0 ft		
23	OMN FAA 694106-54 OMN [IFPA]	N29° 18' 11.70", W081° 06' 45.71"	0.0 E	130	24	112.6	OMN FAA 694106-54	
ESV:		Bearing [True]: 70.0° to 130.0° Bearing [Mag]: 70.0° to 130.0°				Arc Distance: Out to 158.0 NM Altitude: 17000.0 to 18000.0 ft		
24	ZBV FAA 051542-38 ZBV [IFPA]	N25° 42' 15.00", W079° 17' 40.00"	4.0 W	130	10	116.7	ZBV FAA 051542-38	
ESV:		Bearing [True]: 337.0° to 15.0° Bearing [Mag]: 341.0° to 19.0°				Arc Distance: Out to 60.0 NM Altitude: 7600.0 to 16000.0 ft		
25	PHK FAA 900991-44 PHK [IFPA]	N26° 46' 57.87", W080° 41' 29.16"	0.0 E	130	15.5	115.4	PHK FAA 900991-44	
ESV:		Bearing [True]: 111.0° to 145.0° Bearing [Mag]: 111.0° to 145.0°				Arc Distance: Out to 65.0 NM Altitude: 3500.0 to 16000.0 ft		
26	PBI FAA 882483-58 PBI [IFPA]	N26° 40' 48.20", W080° 05' 11.36"	3.0 W	130	15.7	115.7	PBI FAA 882483-58	
ESV:		Bearing [True]: 17.0° to 137.0° Bearing [Mag]: 20.0° to 140.0°				Arc Distance: Out to 78.0 NM Altitude: 5000.0 to 18000.0 ft		

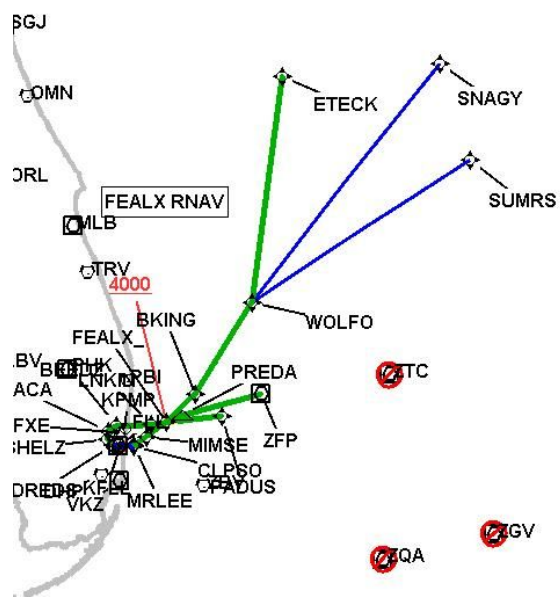
DME DME Assessment Results for FEALX2 path KFL:RW28L:DER_ETECK

DME Error



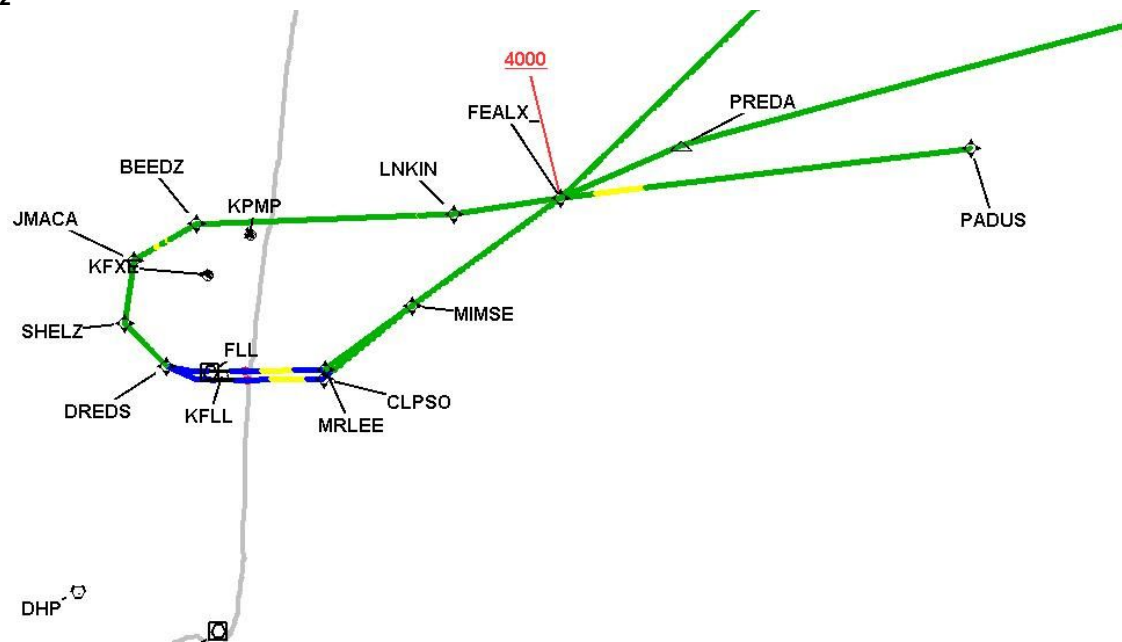
DME DME Assessment Results for FEALX2 path KFL:RW28L:DER_ETECK

Graphic Depiction 1



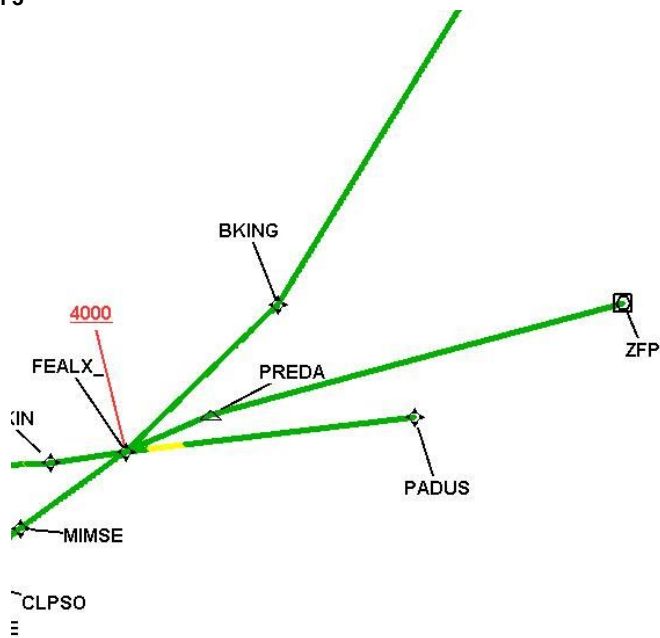
DME DME Assessment Results for FEALX2 path KFL:RW28L:DER_ETECK

Graphic Depiction 2



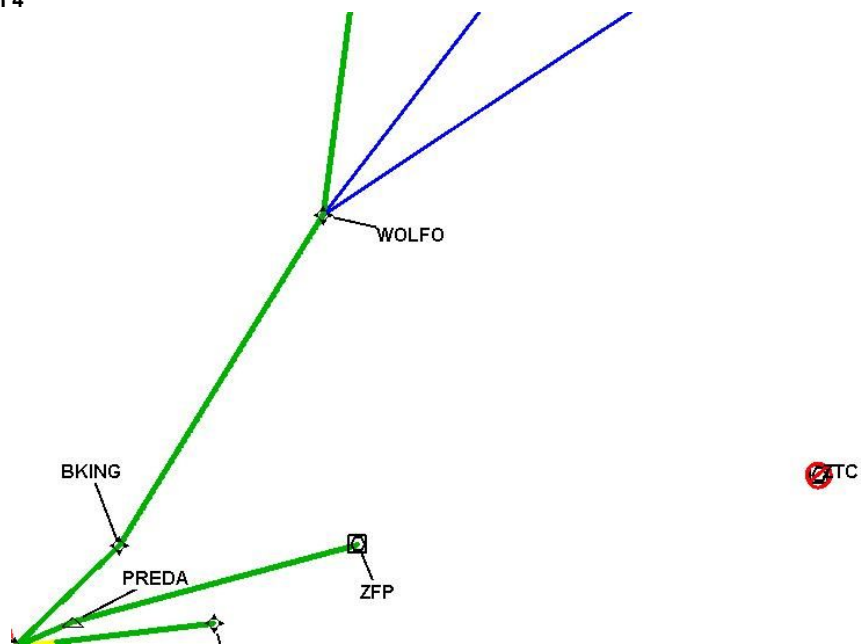
DME DME Assessment Results for FEALX2 path KFL:RW28L:DER_ETECK

Graphic Depiction 3



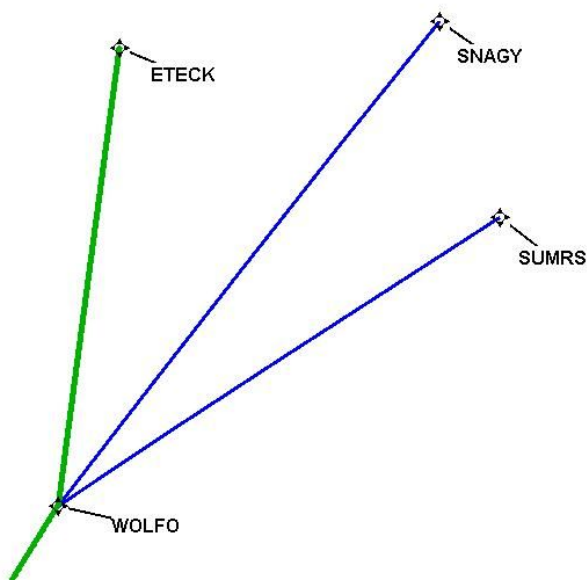
DME DME Assessment Results for FEALX2 path KFL:RW28L:DER_ETECK

Graphic Depiction 4



DME DME Assessment Results for FEALX2 path KFL:RW28L:DER_ETECK

Graphic Depiction 5



DME DME Assessment Results for FEALX2 path KFL:RW28R:DER_DREDS

Results Summary

Flyability:	Completed
DME/DME:	Completed - No Critical DMEs
Name:	David C-CTR Cook
Project File:	C:\Users\David C-CTR Cook\Documents\TARGETS WORK\DME-DME WORK\ICK FOR Liz\FOR ED MESA\FLL FEALX SID (new files loaded to F)\KFL [IFPA] FEALX2 20220224_0637 EST\KFL FEALX2 SID DME 20220224.tgs
Output File:	C:\Users\David C-CTR Cook\Documents\TARGETS WORK\DME-DME WORK\ICK FOR Liz\FOR ED MESA\FLL FEALX SID (new files loaded to F)\KFL [IFPA] FEALX2 20220224_0647 EST\KFL-RW28R-DER_DREDS\KFL FEALX2 SID KFL RW28R DREDS 20220224_0647 EST.pdf
Procedure Name:	FEALX2
Software: DmeDmePlugin:	6.4.1
Date/Time:	02/24/2022 06:47 EST
Databases:	DTED 0 MAX

Failures

No Failures

Warnings

No Warnings

Notes For Flight Check

No reverse run ETECK to WOLFO, critical at beginning of route starting at ETECK.

Flight Plan

Name	Type	Lat/Lon	Altitude (ft)	VNAV Mode	Ground Speed (kts)	Turn Type	Leg Type
KFL:RW28R:DER	WP	N26° 04' 37.02", W080° 09' 59.54"	6	VNAV	130	FLY_BY	TF
DREDS	WP	N26° 04' 56.67", W080° 13' 34.42"	1000	VNAV	200	FLY_BY	TF
Climb Gradient: 500.0 ft/NM up to 580.0 ft MSL 200.0 ft/NM							

Flyability

Flight Type:	SID
Selected Airport:	KFL [IFPA]
Climb Gradient:	500.0 ft/NM up to 580.0 ft MSL 200.0 ft/NM
Speeds:	130 at the Runway DER
	145 at the end of the VA or VI leg
	200 Ground Speed to 11000 FT
	240 Ground Speed to 18000 FT
	260 Ground Speed to 24000 FT
	340 Ground Speed above 24000 FT
Descent During a Turn:	Allowed
VNAV Mode:	Flight Plan

DME DME Assessment Results for FEALX2 path KFL:RW28R:DER_DREDS

DME/DME	
RNP:	RNP 2
Flight Mode:	Manual
Line of Sight (DTED Level 0 Max):	Evaluated
Inertial Drift:	Enabled
Initial Drift:	0.558 NM
INS Drift Rate:	8.0 NM/Hour
Range Mode:	OSV
RNP Edges:	Evaluated
Min DME Range:	3.0 NM
DME Types:	DME, VOR-DME, VORTAC
DME Include Angles:	30 to 150
Critical DMEs:	Not Allowed
DoD Facilities:	Not included
Foreign Facilities:	Included
High DMEs:	Included
Low DMEs:	Included
Terminal DMEs:	Included
Flight Check DMEs:	Not selected
Higher Altitudes:	Not Evaluated
Near Maximum Altitude:	Not Evaluated
Automatic ESVs:	Not enabled
Disabled DMEs:	ZGV,ZQA,ZTC

DME/DME (Continued)										
DMEs Used										
#	Name	Lat/Lon	MAGVAR	Range	Type	Source	Critical	Status	Time	Distance
1	ZGV	N25° 15' 27.00", W076° 18' 31.00"	5.0 W	130	H	IFPA	NO	Disabled		
2	ZQA	N25° 01' 31.80", W077° 26' 47.10"	6.0 W	130	H	IFPA	NO	Disabled		
3	ZTC	N26° 44' 05.00", W077° 22' 45.00"	5.0 W	130	H	IFPA	NO	Disabled		

Flight Check DME Selection						
Distance [NM]	Selected DMEs					Alternate
0.0						

Inertial Drift Segments			
#	Start Location	End Location	Length [NM]
1	N26° 04' 37.03", W080° 10' 01.93"	N26° 04' 56.67", W080° 13' 34.42"	3.2146

Available DMEs by Waypoints		
Waypoint Before	Waypoint After	DME List
KFL:RW28R:DER	DREDS	

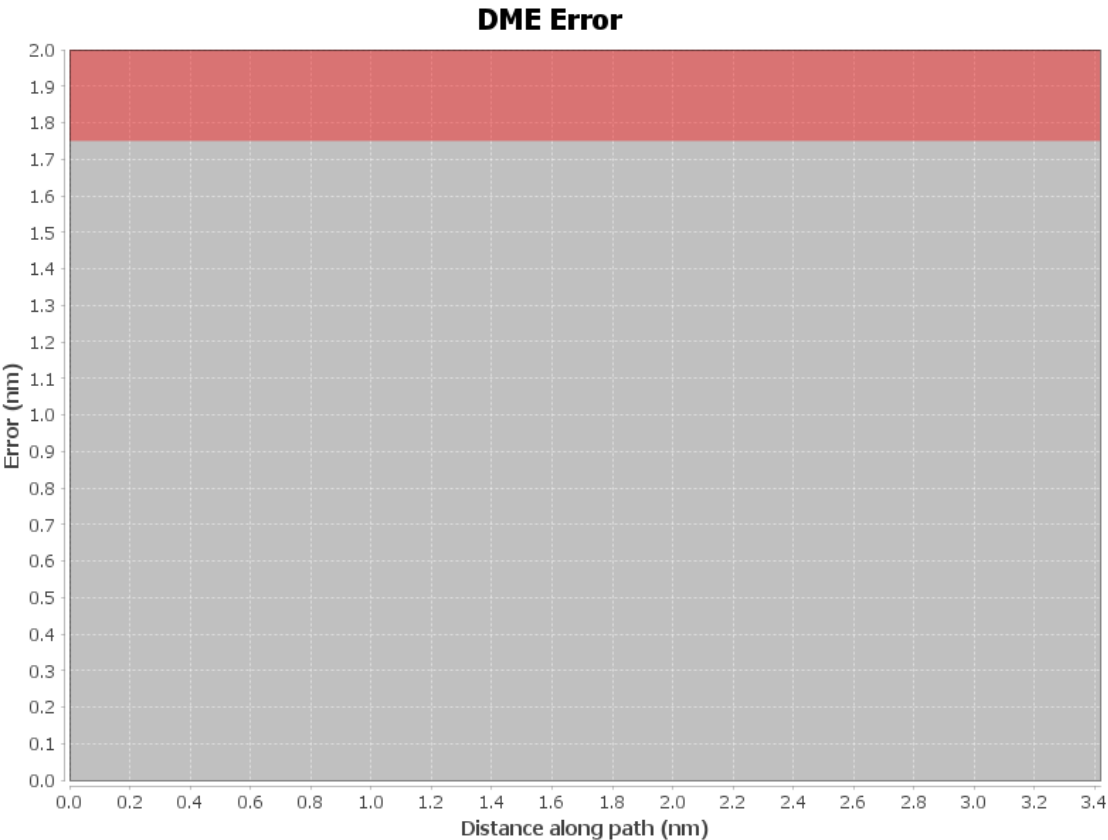
User Data Files	
#	File Name
1	UserDMesKFL [IFPA] FEALX1 SID_20210317_0640 EDT.udt

DME DME Assessment Results for FEALX2 path KFL:RW28R:DER_DREDS

User DMEs								
#	Name	Lat/Lon	MAGVAR	Range	Elevation [ft]	Frequency	Replaces	Status
1	OMN FAA 694106-42 OMN [IFPA]	N29° 18' 11.70", W081° 06' 45.71"	0.0 E	130	24	112.6	OMN FAA 694106-42	
ESV:		Bearing [True]: 350.0° to 175.0° Bearing [Mag]: 350.0° to 175.0°				Arc Distance: Out to 155.0 NM Altitude: 18000.0 to 45000.0 ft		
2	ORL FAA 694096-066 ORL [IFPA]	N28° 32' 33.80", W081° 20' 06.05"	0.0 E	130	101.6	112.2	ORL FAA 694096-066	
ESV:		Bearing [True]: 55.0° to 115.0° Bearing [Mag]: 55.0° to 115.0°				Arc Distance: Out to 158.0 NM Altitude: 16700.0 to 18000.0 ft		
3	LBV FAA 755486-50 LBV [IFPA]	N26° 49' 41.47", W081° 23' 29.18"	1.0 E	40	30	110.4	LBV FAA 755486-50	
ESV:		Bearing [True]: 71.0° to 121.0° Bearing [Mag]: 70.0° to 120.0°				Arc Distance: Out to 123.0 NM Altitude: 10200.0 to 15000.0 ft		
4	OMN FAA 694106-55 OMN [IFPA]	N29° 18' 11.70", W081° 06' 45.71"	0.0 E	130	24	112.6	OMN FAA 694106-55	
ESV:		Bearing [True]: 105.0° to 140.0° Bearing [Mag]: 105.0° to 140.0°				Arc Distance: Out to 153.0 NM Altitude: 16000.0 to 18000.0 ft		
5	TRV FAA 704266-77 TRV [IFPA]	N27° 40' 42.33", W080° 29' 23.01"	7.0 W	130	19.5	117.3	TRV FAA 704266-77	
ESV:		Bearing [True]: 113.0° to 163.0° Bearing [Mag]: 120.0° to 170.0°				Arc Distance: Out to 90.0 NM Altitude: 6000.0 to 18000.0 ft		
6	FLL FAA 121409-15 FLL [IFPA]	N26° 04' 26.18", W080° 09' 59.19"	6.0 W	130	5.6	114.4	FLL FAA 121409-15	
ESV:		Bearing [True]: 21.0° to 98.0° Bearing [Mag]: 27.0° to 104.0°				Arc Distance: Out to 72.0 NM Altitude: 4000.0 to 14600.0 ft		
7	ZBV FAA 051542-40 ZBV [IFPA]	N25° 42' 15.00", W079° 17' 40.00"	4.0 W	130	10	116.7	ZBV FAA 051542-40	
ESV:		Bearing [True]: 355.0° to 20.0° Bearing [Mag]: 359.0° to 24.0°				Arc Distance: Out to 115.0 NM Altitude: 10000.0 to 23000.0 ft		
8	MLB FAA 191356-11 MLB [IFPA]	N28° 06' 19.12", W080° 38' 06.46"	7.0 W	130	34	115.85	MLB FAA 191356-11	
ESV:		Bearing [True]: 38.0° to 83.0° Bearing [Mag]: 45.0° to 90.0°				Arc Distance: Out to 113.0 NM Altitude: 9000.0 to 18000.0 ft		
9	TRV FAA 704266-73 TRV [IFPA]	N27° 40' 42.33", W080° 29' 23.01"	7.0 W	130	19.5	117.3	TRV FAA 704266-73	
ESV:		Bearing [True]: 63.0° to 148.0° Bearing [Mag]: 70.0° to 155.0°				Arc Distance: Out to 91.0 NM Altitude: 6000.0 to 15000.0 ft		
10	PHK FAA 900991-43 PHK [IFPA]	N26° 46' 57.87", W080° 41' 29.16"	0.0 E	130	15.5	115.4	PHK FAA 900991-43	
ESV:		Bearing [True]: 143.0° to 238.0° Bearing [Mag]: 143.0° to 238.0°				Arc Distance: Out to 55.0 NM Altitude: 3000.0 to 16000.0 ft		
11	TRV FAA 704266-78 TRV [IFPA]	N27° 40' 42.33", W080° 29' 23.01"	7.0 W	130	19.5	117.3	TRV FAA 704266-78	
ESV:		Bearing [True]: 33.0° to 93.0° Bearing [Mag]: 40.0° to 100.0°				Arc Distance: Out to 113.0 NM Altitude: 8900.0 to 18000.0 ft		
12	PBI FAA 882483-063 PBI [IFPA]	N26° 40' 48.20", W080° 05' 11.36"	3.0 W	130	15.7	115.7	PBI FAA 882483-063	
ESV:		Bearing [True]: 17.0° to 117.0° Bearing [Mag]: 20.0° to 120.0°				Arc Distance: Out to 160.0 NM Altitude: 17100.0 to 23000.0 ft		
13	TRV FAA 704266-72 TRV [IFPA]	N27° 40' 42.33", W080° 29' 23.01"	7.0 W	130	19.5	117.3	TRV FAA 704266-72	
ESV:		Bearing [True]: 23.0° to 63.0° Bearing [Mag]: 30.0° to 70.0°				Arc Distance: Out to 152.0 NM Altitude: 15700.0 to 18100.0 ft		
14	FLL FAA 121409-24 FLL [IFPA]	N26° 04' 26.18", W080° 09' 59.19"	6.0 W	130	5.6	114.4	FLL FAA 121409-24	
ESV:		Bearing [True]: 24.0° to 64.0° Bearing [Mag]: 30.0° to 70.0°				Arc Distance: Out to 72.0 NM Altitude: 3900.0 to 10000.0 ft		
15	DHP FAA 955265-47 DHP [IFPA]	N25° 47' 59.87", W080° 20' 56.53"	4.0 W	130	5.9	113.9	DHP FAA 955265-47	
ESV:		Bearing [True]: 351.0° to 96.0° Bearing [Mag]: 355.0° to 100.0°				Arc Distance: Out to 80.0 NM Altitude: 5000.0 to 13000.0 ft		
16	PBI FAA 882483-69 PBI [IFPA]	N26° 40' 48.20", W080° 05' 11.36"	3.0 W	130	15.7	115.7	PBI FAA 882483-69	
ESV:		Bearing [True]: 117.0° to 147.0° Bearing [Mag]: 120.0° to 150.0°				Arc Distance: Out to 85.0 NM Altitude: 6000.0 to 18000.0 ft		
17	DHP FAA 955265-46 DHP [IFPA]	N25° 47' 59.87", W080° 20' 56.53"	4.0 W	130	5.9	113.9	DHP FAA 955265-46	

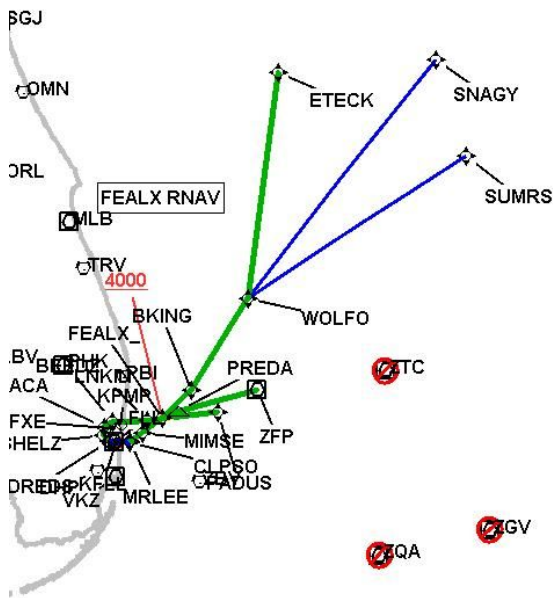
DME DME Assessment Results for FEALX2 path KFL:RW28R:DER_DREDS

User DMEs								
#	Name	Lat/Lon	MAGVAR	Range	Elevation [ft]	Frequency	Replaces	Status
ESV:		Bearing [True]: 16.0° to 46.0° Bearing [Mag]: 20.0° to 50.0°				Arc Distance: Out to 122.0 NM Altitude: 10400.0 to 13700.0 ft		
18	TRV FAA 704266-075 TRV [IFPA]	N27° 40' 42.33", W080° 29' 23.01"	7.0 W	130	19.5	117.3	TRV FAA 704266-075	
ESV:		Bearing [True]: 23.0° to 133.0° Bearing [Mag]: 30.0° to 140.0°				Arc Distance: Out to 160.0 NM Altitude: 17100.0 to 23000.0 ft		
19	LBV FAA 755486-44 LBV [IFPA]	N26° 49' 41.47", W081° 23' 29.18"	1.0 E	40	30	110.4	LBV FAA 755486-44	
ESV:		Bearing [True]: 11.0° to 161.0° Bearing [Mag]: 10.0° to 160.0°				Arc Distance: Out to 113.0 NM Altitude: 9000.0 to 15000.0 ft		
20	DHP FAA 955265-28 DHP [IFPA]	N25° 47' 59.87", W080° 20' 56.53"	4.0 W	130	5.9	113.9	DHP FAA 955265-28	
ESV:		Bearing [True]: 30.0° to 64.0° Bearing [Mag]: 34.0° to 68.0°				Arc Distance: Out to 84.0 NM Altitude: 7100.0 to 16000.0 ft		
21	ZBV FAA 051542-42 ZBV [IFPA]	N25° 42' 15.00", W079° 17' 40.00"	4.0 W	130	10	116.7	ZBV FAA 051542-42	
ESV:		Bearing [True]: 320.0° to 350.0° Bearing [Mag]: 324.0° to 354.0°				Arc Distance: Out to 80.0 NM Altitude: 4000.0 to 5000.0 ft		
22	FLL FAA 121409-18 FLL [IFPA]	N26° 04' 26.18", W080° 09' 59.19"	6.0 W	130	5.6	114.4	FLL FAA 121409-18	
ESV:		Bearing [True]: 24.0° to 54.0° Bearing [Mag]: 30.0° to 60.0°				Arc Distance: Out to 150.0 NM Altitude: 15100.0 to 18000.0 ft		
23	OMN FAA 694106-54 OMN [IFPA]	N29° 18' 11.70", W081° 06' 45.71"	0.0 E	130	24	112.6	OMN FAA 694106-54	
ESV:		Bearing [True]: 70.0° to 130.0° Bearing [Mag]: 70.0° to 130.0°				Arc Distance: Out to 158.0 NM Altitude: 17000.0 to 18000.0 ft		
24	ZBV FAA 051542-38 ZBV [IFPA]	N25° 42' 15.00", W079° 17' 40.00"	4.0 W	130	10	116.7	ZBV FAA 051542-38	
ESV:		Bearing [True]: 337.0° to 15.0° Bearing [Mag]: 341.0° to 19.0°				Arc Distance: Out to 60.0 NM Altitude: 7600.0 to 16000.0 ft		
25	PHK FAA 900991-44 PHK [IFPA]	N26° 46' 57.87", W080° 41' 29.16"	0.0 E	130	15.5	115.4	PHK FAA 900991-44	
ESV:		Bearing [True]: 111.0° to 145.0° Bearing [Mag]: 111.0° to 145.0°				Arc Distance: Out to 65.0 NM Altitude: 3500.0 to 16000.0 ft		
26	PBI FAA 882483-58 PBI [IFPA]	N26° 40' 48.20", W080° 05' 11.36"	3.0 W	130	15.7	115.7	PBI FAA 882483-58	
ESV:		Bearing [True]: 17.0° to 137.0° Bearing [Mag]: 20.0° to 140.0°				Arc Distance: Out to 78.0 NM Altitude: 5000.0 to 18000.0 ft		

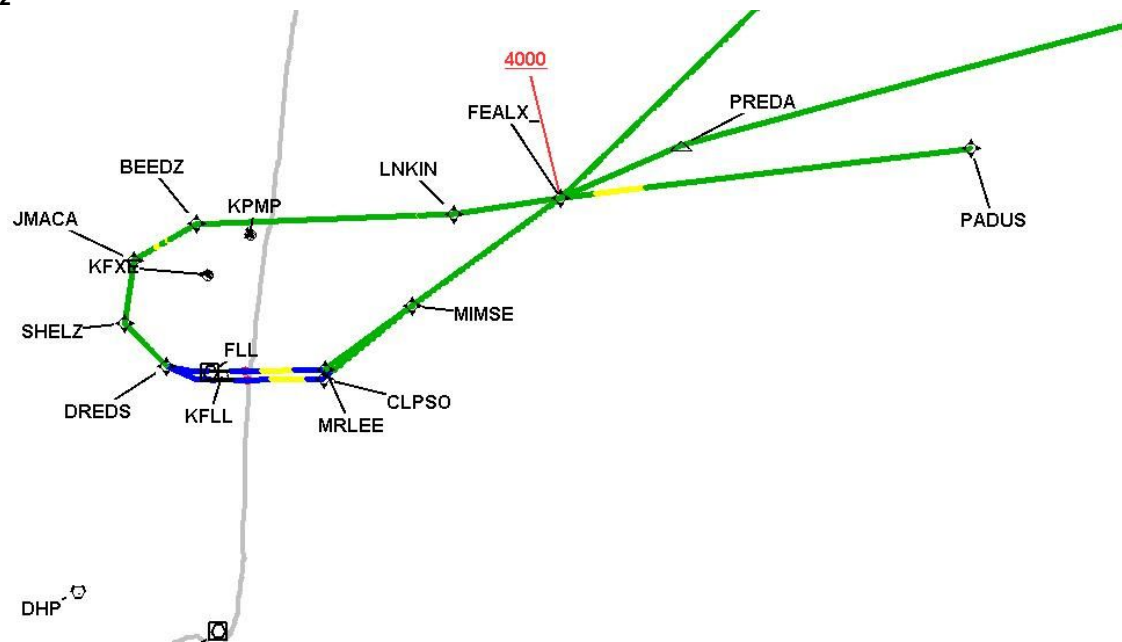


DME DME Assessment Results for FEALX2 path KFL:RW28R:DER_DREDS

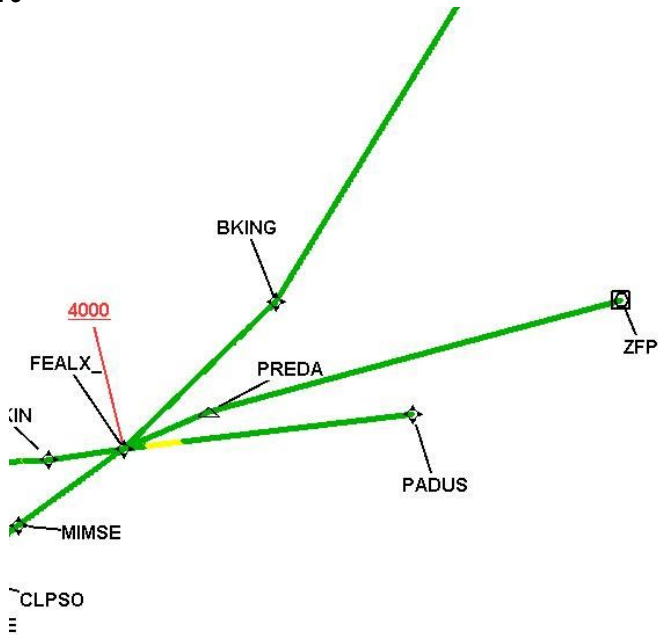
Graphic Depiction 1



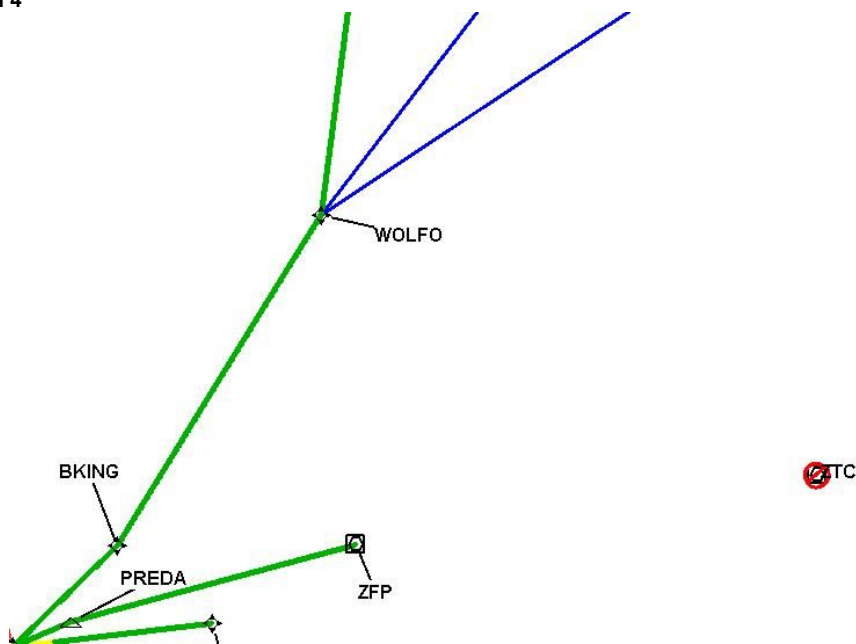
Graphic Depiction 2



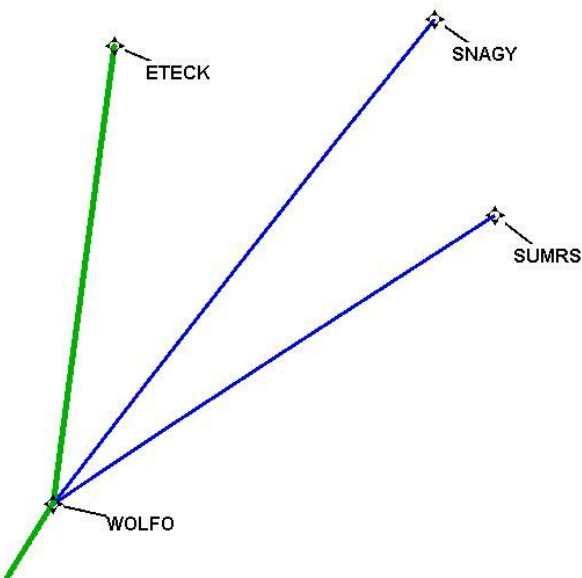
Graphic Depiction 3



Graphic Depiction 4



Graphic Depiction 5



DME DME Assessment Results for FEALX2 path WOLFO_SNAGY

Results Summary

Flyability:	Completed
DME/DME:	Completed - No Critical DMEs
Name:	David C-CTR Cook
Project File:	C:\Users\David C-CTR Cook\Documents\TARGETS WORK\DME-DME WORK\ICK FOR Liz\FOR ED MESA\FLL FEALX SID (new files loaded to F)\KFL [IFPA] FEALX2 20220224_0637 EST\KFL FEALX2 SID DME 20220224.tgs
Output File:	C:\Users\David C-CTR Cook\Documents\TARGETS WORK\DME-DME WORK\ICK FOR Liz\FOR ED MESA\FLL FEALX SID (new files loaded to F)\KFL [IFPA] FEALX2 20220224_0647 EST\WOLFO_SNAGY\KFL FEALX2 SID WOLFO SNAGY 20220224_0647 EST.pdf
Procedure Name:	FEALX2
Software: DmeDmePlugin:	6.4.1
Date/Time:	02/24/2022 06:47 EST
Databases:	DTED 0 MAX

Failures

No Failures

Warnings

GNSS_ONLY WOLFO_____SNAGY is GNSS Only and was not evaluated

Notes For Flight Check

No reverse run ETECK to WOLFO, critical at beginning of route starting at ETECK.

Flight Plan

Name	Type	Lat/Lon	Altitude (ft)	VNAV Mode	Ground Speed (kts)	Turn Type	Leg Type
WOLFO	WP	N27° 24' 08.43", W078° 47' 50.08"	18000	VNAV	240	FLY_BY	TF
SNAGY	WP	N29° 36' 26.39", W076° 51' 51.38"	18000	VNAV	240	FLY_BY	TF

Flyability

Flight Type:	SID
Selected Airport:	KFL [IFPA]
Climb Gradient:	None assigned
Speeds:	130 at the Runway DER
	145 at the end of the VA or VI leg
	200 Ground Speed to 11000 FT
	240 Ground Speed to 18000 FT
	260 Ground Speed to 24000 FT
	340 Ground Speed above 24000 FT
Descent During a Turn:	Allowed
VNAV Mode:	Flight Plan

DME DME Assessment Results for FEALX2 path WOLFO_SNAGY

DME/DME	
RNP:	RNP 2
Flight Mode:	Manual
Line of Sight (DTED Level 0 Max):	Evaluated
Inertial Drift:	Enabled
Initial Drift:	0.558 NM
INS Drift Rate:	8.0 NM/Hour
Range Mode:	OSV
RNP Edges:	Evaluated
Min DME Range:	3.0 NM
DME Types:	DME, VOR-DME, VORTAC
DME Include Angles:	30 to 150
Critical DMEs:	Not Allowed
DoD Facilities:	Not included
Foreign Facilities:	Included
High DMEs:	Included
Low DMEs:	Included
Terminal DMEs:	Included
Flight Check DMEs:	Not selected
Higher Altitudes:	Not Evaluated
Near Maximum Altitude:	Not Evaluated
Automatic ESVs:	Not enabled
Disabled DMEs:	ZGV,ZQA,ZTC

DME/DME (Continued)										
DMEs Used										
#	Name	Lat/Lon	MAGVAR	Range	Type	Source	Critical	Status	Time	Distance
1	ZGV	N25° 15' 27.00", W076° 18' 31.00"	5.0 W	130	H	IFPA	NO	Disabled		
2	ZQA	N25° 01' 31.80", W077° 26' 47.10"	6.0 W	130	H	IFPA	NO	Disabled		
3	ZTC	N26° 44' 05.00", W077° 22' 45.00"	5.0 W	130	H	IFPA	NO	Disabled		

Inertial Drift Segments			
#	Start Location	End Location	Length [NM]

Available DMEs by Waypoints		
Waypoint Before	Waypoint After	DME List
WOLFO	SNAGY	

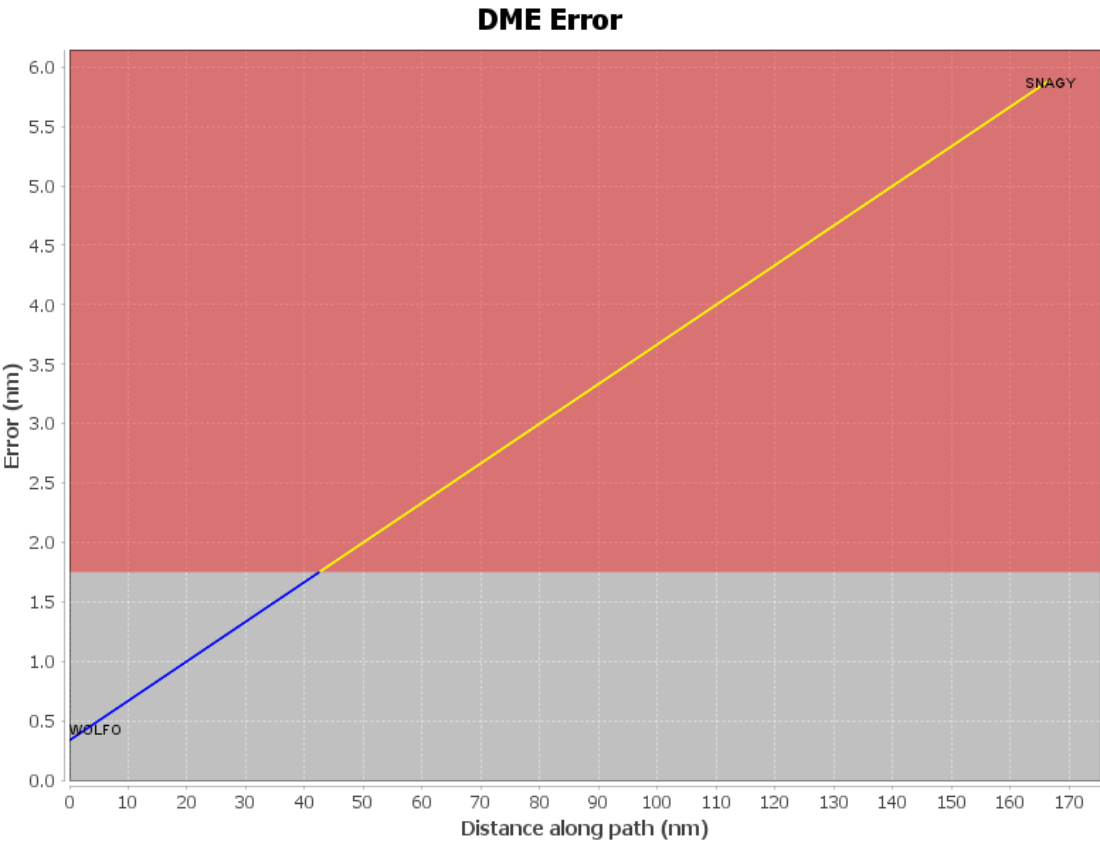
User Data Files	
#	File Name
1	UserDMesKFLL [IFPA] FEALX1 SID_20210317_0640 EDT.udt

DME DME Assessment Results for FEALX2 path WOLFO_SNAGY

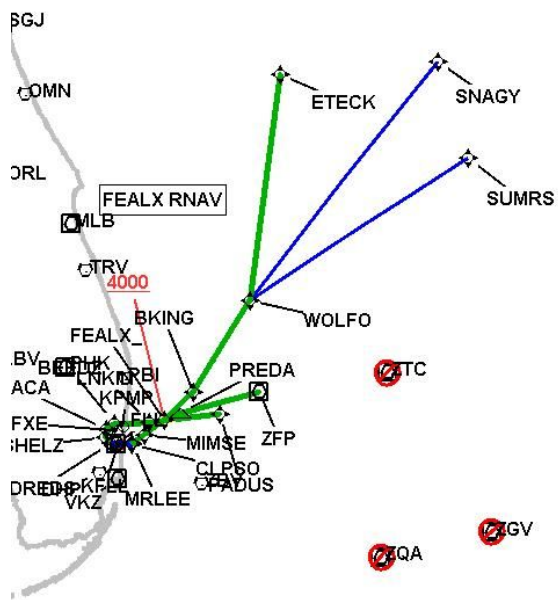
User DMEs								
#	Name	Lat/Lon	MAGVAR	Range	Elevation [ft]	Frequency	Replaces	Status
1	OMN FAA 694106-42 OMN [IFPA]	N29° 18' 11.70", W081° 06' 45.71"	0.0 E	130	24	112.6	OMN FAA 694106-42	
ESV:		Bearing [True]: 350.0° to 175.0° Bearing [Mag]: 350.0° to 175.0°				Arc Distance: Out to 155.0 NM Altitude: 18000.0 to 45000.0 ft		
2	ORL FAA 694096-066 ORL [IFPA]	N28° 32' 33.80", W081° 20' 06.05"	0.0 E	130	101.6	112.2	ORL FAA 694096-066	
ESV:		Bearing [True]: 55.0° to 115.0° Bearing [Mag]: 55.0° to 115.0°				Arc Distance: Out to 158.0 NM Altitude: 16700.0 to 18000.0 ft		
3	LBV FAA 755486-50 LBV [IFPA]	N26° 49' 41.47", W081° 23' 29.18"	1.0 E	40	30	110.4	LBV FAA 755486-50	
ESV:		Bearing [True]: 71.0° to 121.0° Bearing [Mag]: 70.0° to 120.0°				Arc Distance: Out to 123.0 NM Altitude: 10200.0 to 15000.0 ft		
4	OMN FAA 694106-55 OMN [IFPA]	N29° 18' 11.70", W081° 06' 45.71"	0.0 E	130	24	112.6	OMN FAA 694106-55	
ESV:		Bearing [True]: 105.0° to 140.0° Bearing [Mag]: 105.0° to 140.0°				Arc Distance: Out to 153.0 NM Altitude: 16000.0 to 18000.0 ft		
5	TRV FAA 704266-77 TRV [IFPA]	N27° 40' 42.33", W080° 29' 23.01"	7.0 W	130	19.5	117.3	TRV FAA 704266-77	
ESV:		Bearing [True]: 113.0° to 163.0° Bearing [Mag]: 120.0° to 170.0°				Arc Distance: Out to 90.0 NM Altitude: 6000.0 to 18000.0 ft		
6	FLL FAA 121409-15 FLL [IFPA]	N26° 04' 26.18", W080° 09' 59.19"	6.0 W	130	5.6	114.4	FLL FAA 121409-15	
ESV:		Bearing [True]: 21.0° to 98.0° Bearing [Mag]: 27.0° to 104.0°				Arc Distance: Out to 72.0 NM Altitude: 4000.0 to 14600.0 ft		
7	ZBV FAA 051542-40 ZBV [IFPA]	N25° 42' 15.00", W079° 17' 40.00"	4.0 W	130	10	116.7	ZBV FAA 051542-40	
ESV:		Bearing [True]: 355.0° to 20.0° Bearing [Mag]: 359.0° to 24.0°				Arc Distance: Out to 115.0 NM Altitude: 10000.0 to 23000.0 ft		
8	MLB FAA 191356-11 MLB [IFPA]	N28° 06' 19.12", W080° 38' 06.46"	7.0 W	130	34	115.85	MLB FAA 191356-11	
ESV:		Bearing [True]: 38.0° to 83.0° Bearing [Mag]: 45.0° to 90.0°				Arc Distance: Out to 113.0 NM Altitude: 9000.0 to 18000.0 ft		
9	TRV FAA 704266-73 TRV [IFPA]	N27° 40' 42.33", W080° 29' 23.01"	7.0 W	130	19.5	117.3	TRV FAA 704266-73	
ESV:		Bearing [True]: 63.0° to 148.0° Bearing [Mag]: 70.0° to 155.0°				Arc Distance: Out to 91.0 NM Altitude: 6000.0 to 15000.0 ft		
10	PHK FAA 900991-43 PHK [IFPA]	N26° 46' 57.87", W080° 41' 29.16"	0.0 E	130	15.5	115.4	PHK FAA 900991-43	
ESV:		Bearing [True]: 143.0° to 238.0° Bearing [Mag]: 143.0° to 238.0°				Arc Distance: Out to 55.0 NM Altitude: 3000.0 to 16000.0 ft		
11	TRV FAA 704266-78 TRV [IFPA]	N27° 40' 42.33", W080° 29' 23.01"	7.0 W	130	19.5	117.3	TRV FAA 704266-78	
ESV:		Bearing [True]: 33.0° to 93.0° Bearing [Mag]: 40.0° to 100.0°				Arc Distance: Out to 113.0 NM Altitude: 8900.0 to 18000.0 ft		
12	PBI FAA 882483-063 PBI [IFPA]	N26° 40' 48.20", W080° 05' 11.36"	3.0 W	130	15.7	115.7	PBI FAA 882483-063	
ESV:		Bearing [True]: 17.0° to 117.0° Bearing [Mag]: 20.0° to 120.0°				Arc Distance: Out to 160.0 NM Altitude: 17100.0 to 23000.0 ft		
13	TRV FAA 704266-72 TRV [IFPA]	N27° 40' 42.33", W080° 29' 23.01"	7.0 W	130	19.5	117.3	TRV FAA 704266-72	
ESV:		Bearing [True]: 23.0° to 63.0° Bearing [Mag]: 30.0° to 70.0°				Arc Distance: Out to 152.0 NM Altitude: 15700.0 to 18100.0 ft		
14	FLL FAA 121409-24 FLL [IFPA]	N26° 04' 26.18", W080° 09' 59.19"	6.0 W	130	5.6	114.4	FLL FAA 121409-24	
ESV:		Bearing [True]: 24.0° to 64.0° Bearing [Mag]: 30.0° to 70.0°				Arc Distance: Out to 72.0 NM Altitude: 3900.0 to 10000.0 ft		
15	DHP FAA 955265-47 DHP [IFPA]	N25° 47' 59.87", W080° 20' 56.53"	4.0 W	130	5.9	113.9	DHP FAA 955265-47	
ESV:		Bearing [True]: 351.0° to 96.0° Bearing [Mag]: 355.0° to 100.0°				Arc Distance: Out to 80.0 NM Altitude: 5000.0 to 13000.0 ft		
16	PBI FAA 882483-69 PBI [IFPA]	N26° 40' 48.20", W080° 05' 11.36"	3.0 W	130	15.7	115.7	PBI FAA 882483-69	
ESV:		Bearing [True]: 117.0° to 147.0° Bearing [Mag]: 120.0° to 150.0°				Arc Distance: Out to 85.0 NM Altitude: 6000.0 to 18000.0 ft		
17	DHP FAA 955265-46 DHP [IFPA]	N25° 47' 59.87", W080° 20' 56.53"	4.0 W	130	5.9	113.9	DHP FAA 955265-46	

DME DME Assessment Results for FEALX2 path WOLFO_SNAGY

User DMEs								
#	Name	Lat/Lon	MAGVAR	Range	Elevation [ft]	Frequency	Replaces	Status
ESV:		Bearing [True]: 16.0° to 46.0° Bearing [Mag]: 20.0° to 50.0°				Arc Distance: Out to 122.0 NM Altitude: 10400.0 to 13700.0 ft		
18	TRV FAA 704266-075 TRV [IFPA]	N27° 40' 42.33", W080° 29' 23.01"	7.0 W	130	19.5	117.3	TRV FAA 704266-075	
ESV:		Bearing [True]: 23.0° to 133.0° Bearing [Mag]: 30.0° to 140.0°				Arc Distance: Out to 160.0 NM Altitude: 17100.0 to 23000.0 ft		
19	LBV FAA 755486-44 LBV [IFPA]	N26° 49' 41.47", W081° 23' 29.18"	1.0 E	40	30	110.4	LBV FAA 755486-44	
ESV:		Bearing [True]: 11.0° to 161.0° Bearing [Mag]: 10.0° to 160.0°				Arc Distance: Out to 113.0 NM Altitude: 9000.0 to 15000.0 ft		
20	DHP FAA 955265-28 DHP [IFPA]	N25° 47' 59.87", W080° 20' 56.53"	4.0 W	130	5.9	113.9	DHP FAA 955265-28	
ESV:		Bearing [True]: 30.0° to 64.0° Bearing [Mag]: 34.0° to 68.0°				Arc Distance: Out to 84.0 NM Altitude: 7100.0 to 16000.0 ft		
21	ZBV FAA 051542-42 ZBV [IFPA]	N25° 42' 15.00", W079° 17' 40.00"	4.0 W	130	10	116.7	ZBV FAA 051542-42	
ESV:		Bearing [True]: 320.0° to 350.0° Bearing [Mag]: 324.0° to 354.0°				Arc Distance: Out to 80.0 NM Altitude: 4000.0 to 5000.0 ft		
22	FLL FAA 121409-18 FLL [IFPA]	N26° 04' 26.18", W080° 09' 59.19"	6.0 W	130	5.6	114.4	FLL FAA 121409-18	
ESV:		Bearing [True]: 24.0° to 54.0° Bearing [Mag]: 30.0° to 60.0°				Arc Distance: Out to 150.0 NM Altitude: 15100.0 to 18000.0 ft		
23	OMN FAA 694106-54 OMN [IFPA]	N29° 18' 11.70", W081° 06' 45.71"	0.0 E	130	24	112.6	OMN FAA 694106-54	
ESV:		Bearing [True]: 70.0° to 130.0° Bearing [Mag]: 70.0° to 130.0°				Arc Distance: Out to 158.0 NM Altitude: 17000.0 to 18000.0 ft		
24	ZBV FAA 051542-38 ZBV [IFPA]	N25° 42' 15.00", W079° 17' 40.00"	4.0 W	130	10	116.7	ZBV FAA 051542-38	
ESV:		Bearing [True]: 337.0° to 15.0° Bearing [Mag]: 341.0° to 19.0°				Arc Distance: Out to 60.0 NM Altitude: 7600.0 to 16000.0 ft		
25	PHK FAA 900991-44 PHK [IFPA]	N26° 46' 57.87", W080° 41' 29.16"	0.0 E	130	15.5	115.4	PHK FAA 900991-44	
ESV:		Bearing [True]: 111.0° to 145.0° Bearing [Mag]: 111.0° to 145.0°				Arc Distance: Out to 65.0 NM Altitude: 3500.0 to 16000.0 ft		
26	PBI FAA 882483-58 PBI [IFPA]	N26° 40' 48.20", W080° 05' 11.36"	3.0 W	130	15.7	115.7	PBI FAA 882483-58	
ESV:		Bearing [True]: 17.0° to 137.0° Bearing [Mag]: 20.0° to 140.0°				Arc Distance: Out to 78.0 NM Altitude: 5000.0 to 18000.0 ft		

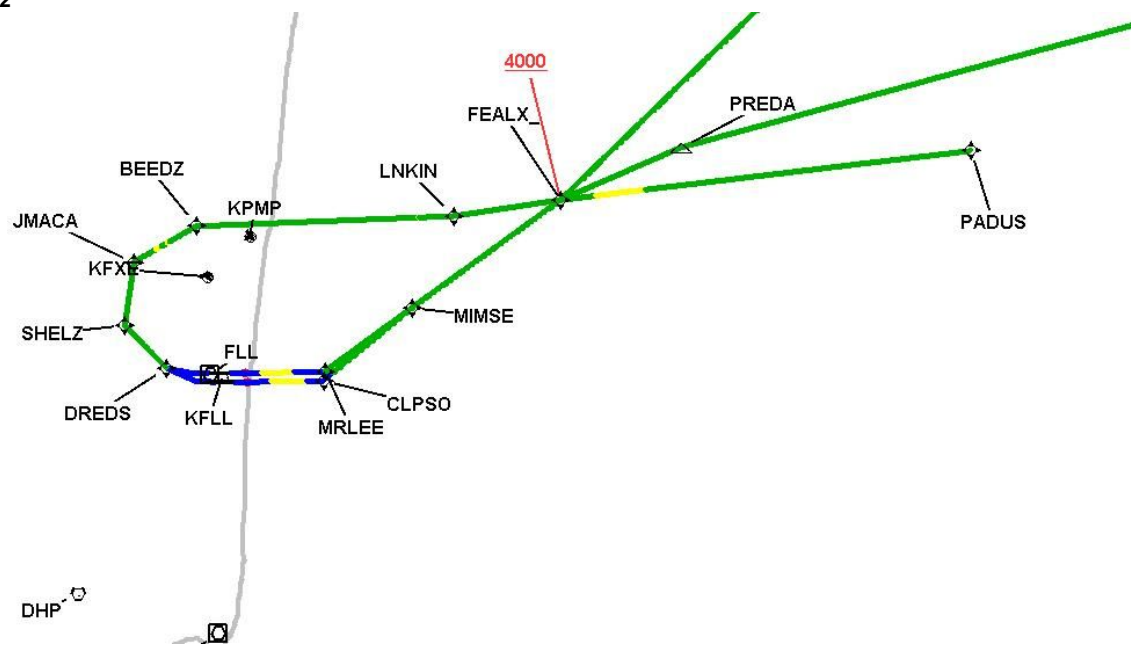


Graphic Depiction 1



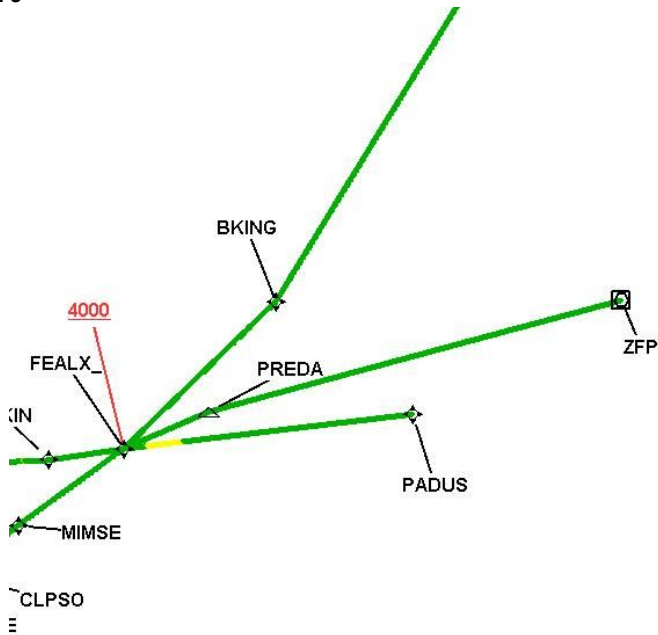
DME DME Assessment Results for FEALX2 path WOLFO_SNAGY

Graphic Depiction 2



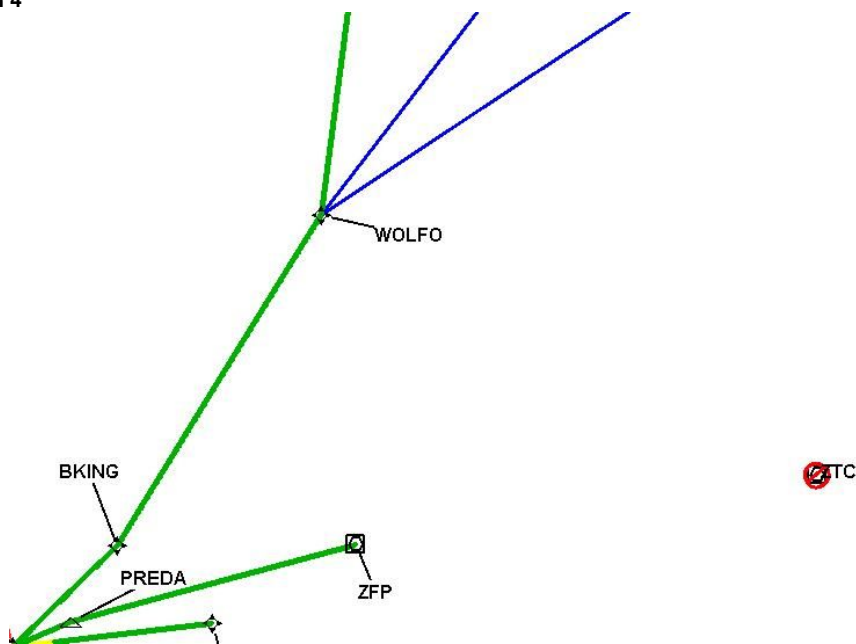
DME DME Assessment Results for FEALX2 path WOLFO_SNAGY

Graphic Depiction 3

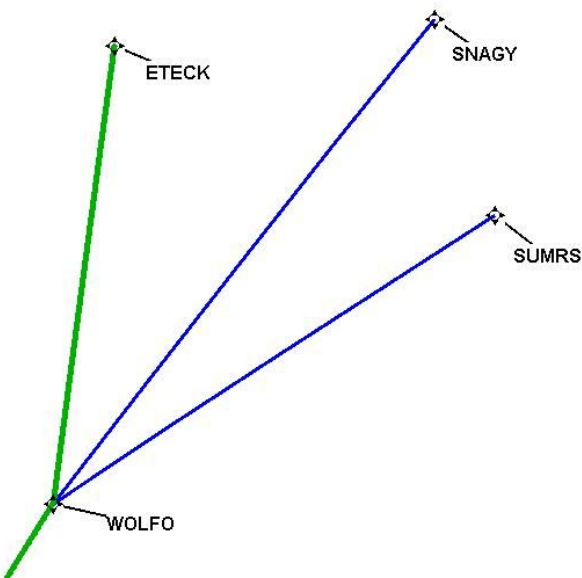


DME DME Assessment Results for FEALX2 path WOLFO_SNAGY

Graphic Depiction 4



Graphic Depiction 5



DME DME Assessment Results for FEALX2 path WOLFO_SUMRS

Results Summary

Flyability:	Completed
DME/DME:	Completed - No Critical DMEs
Name:	David C-CTR Cook
Project File:	C:\Users\David C-CTR Cook\Documents\TARGETS WORK\DME-DME WORK\ICK FOR Liz\FOR ED MESA\FLL FEALX SID (new files loaded to F)\KFL [IFPA] FEALX2 20220224_0637 EST\KFL FEALX2 SID DME 20220224.tgs
Output File:	C:\Users\David C-CTR Cook\Documents\TARGETS WORK\DME-DME WORK\ICK FOR Liz\FOR ED MESA\FLL FEALX SID (new files loaded to F)\KFL [IFPA] FEALX2 20220224_0647 EST\WOLFO_SUMRS\KFL FEALX2 SID WOLFO SUMRS 20220224_0647 EST.pdf
Procedure Name:	FEALX2
Software: DmeDmePlugin:	6.4.1
Date/Time:	02/24/2022 06:47 EST
Databases:	DTED 0 MAX

Failures

No Failures

Warnings

GNSS_ONLY WOLFO_____SUMRS is GNSS Only and was not evaluated

Notes For Flight Check

No reverse run ETECK to WOLFO, critical at beginning of route starting at ETECK.

Flight Plan

Name	Type	Lat/Lon	Altitude (ft)	VNAV Mode	Ground Speed (kts)	Turn Type	Leg Type
WOLFO	WP	N27° 24' 08.43", W078° 47' 50.08"	18000	VNAV	240	FLY_BY	TF
SUMRS	WP	N28° 42' 42.08", W076° 33' 30.59"	18000	VNAV	240	FLY_BY	TF

Flyability

Flight Type:	SID
Selected Airport:	KFL [IFPA]
Climb Gradient:	None assigned
Speeds:	130 at the Runway DER
	145 at the end of the VA or VI leg
	200 Ground Speed to 11000 FT
	240 Ground Speed to 18000 FT
	260 Ground Speed to 24000 FT
	340 Ground Speed above 24000 FT
Descent During a Turn:	Allowed
VNAV Mode:	Flight Plan

DME DME Assessment Results for FEALX2 path WOLFO_SUMRS

DME/DME	
RNP:	RNP 2
Flight Mode:	Manual
Line of Sight (DTED Level 0 Max):	Evaluated
Inertial Drift:	Enabled
Initial Drift:	0.558 NM
INS Drift Rate:	8.0 NM/Hour
Range Mode:	OSV
RNP Edges:	Evaluated
Min DME Range:	3.0 NM
DME Types:	DME, VOR-DME, VORTAC
DME Include Angles:	30 to 150
Critical DMEs:	Not Allowed
DoD Facilities:	Not included
Foreign Facilities:	Included
High DMEs:	Included
Low DMEs:	Included
Terminal DMEs:	Included
Flight Check DMEs:	Not selected
Higher Altitudes:	Not Evaluated
Near Maximum Altitude:	Not Evaluated
Automatic ESVs:	Not enabled
Disabled DMEs:	ZGV,ZQA,ZTC

DME/DME (Continued)										
DMEs Used										
#	Name	Lat/Lon	MAGVAR	Range	Type	Source	Critical	Status	Time	Distance
1	ZGV	N25° 15' 27.00", W076° 18' 31.00"	5.0 W	130	H	IFPA	NO	Disabled		
2	ZQA	N25° 01' 31.80", W077° 26' 47.10"	6.0 W	130	H	IFPA	NO	Disabled		
3	ZTC	N26° 44' 05.00", W077° 22' 45.00"	5.0 W	130	H	IFPA	NO	Disabled		

Inertial Drift Segments			
#	Start Location	End Location	Length [NM]

Available DMEs by Waypoints		
Waypoint Before	Waypoint After	DME List
WOLFO	SUMRS	

User Data Files	
#	File Name
1	UserDMesKFLL [IFPA] FEALX1 SID_20210317_0640 EDT.udt

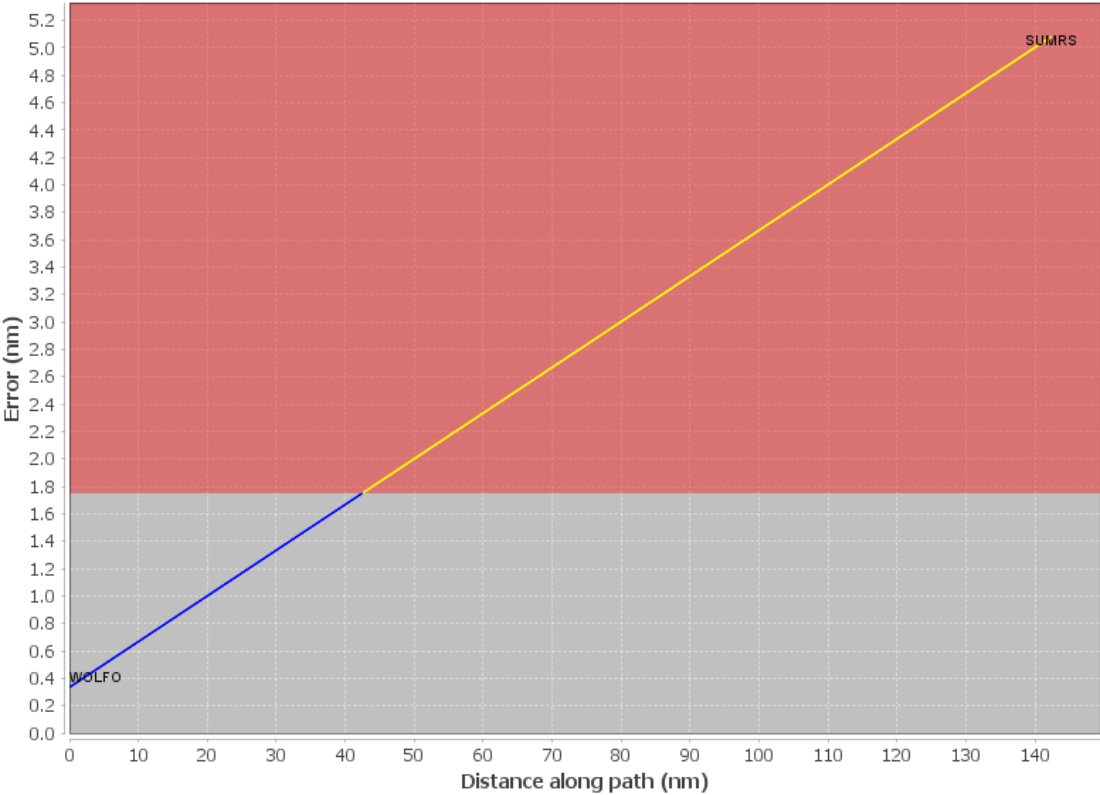
DME DME Assessment Results for FEALX2 path WOLFO_SUMRS

User DMEs								
#	Name	Lat/Lon	MAGVAR	Range	Elevation [ft]	Frequency	Replaces	Status
1	OMN FAA 694106-42 OMN [IFPA]	N29° 18' 11.70", W081° 06' 45.71"	0.0 E	130	24	112.6	OMN FAA 694106-42	
ESV:		Bearing [True]: 350.0° to 175.0° Bearing [Mag]: 350.0° to 175.0°				Arc Distance: Out to 155.0 NM Altitude: 18000.0 to 45000.0 ft		
2	ORL FAA 694096-066 ORL [IFPA]	N28° 32' 33.80", W081° 20' 06.05"	0.0 E	130	101.6	112.2	ORL FAA 694096-066	
ESV:		Bearing [True]: 55.0° to 115.0° Bearing [Mag]: 55.0° to 115.0°				Arc Distance: Out to 158.0 NM Altitude: 16700.0 to 18000.0 ft		
3	LBV FAA 755486-50 LBV [IFPA]	N26° 49' 41.47", W081° 23' 29.18"	1.0 E	40	30	110.4	LBV FAA 755486-50	
ESV:		Bearing [True]: 71.0° to 121.0° Bearing [Mag]: 70.0° to 120.0°				Arc Distance: Out to 123.0 NM Altitude: 10200.0 to 15000.0 ft		
4	OMN FAA 694106-55 OMN [IFPA]	N29° 18' 11.70", W081° 06' 45.71"	0.0 E	130	24	112.6	OMN FAA 694106-55	
ESV:		Bearing [True]: 105.0° to 140.0° Bearing [Mag]: 105.0° to 140.0°				Arc Distance: Out to 153.0 NM Altitude: 16000.0 to 18000.0 ft		
5	TRV FAA 704266-77 TRV [IFPA]	N27° 40' 42.33", W080° 29' 23.01"	7.0 W	130	19.5	117.3	TRV FAA 704266-77	
ESV:		Bearing [True]: 113.0° to 163.0° Bearing [Mag]: 120.0° to 170.0°				Arc Distance: Out to 90.0 NM Altitude: 6000.0 to 18000.0 ft		
6	FLL FAA 121409-15 FLL [IFPA]	N26° 04' 26.18", W080° 09' 59.19"	6.0 W	130	5.6	114.4	FLL FAA 121409-15	
ESV:		Bearing [True]: 21.0° to 98.0° Bearing [Mag]: 27.0° to 104.0°				Arc Distance: Out to 72.0 NM Altitude: 4000.0 to 14600.0 ft		
7	ZBV FAA 051542-40 ZBV [IFPA]	N25° 42' 15.00", W079° 17' 40.00"	4.0 W	130	10	116.7	ZBV FAA 051542-40	
ESV:		Bearing [True]: 355.0° to 20.0° Bearing [Mag]: 359.0° to 24.0°				Arc Distance: Out to 115.0 NM Altitude: 10000.0 to 23000.0 ft		
8	MLB FAA 191356-11 MLB [IFPA]	N28° 06' 19.12", W080° 38' 06.46"	7.0 W	130	34	115.85	MLB FAA 191356-11	
ESV:		Bearing [True]: 38.0° to 83.0° Bearing [Mag]: 45.0° to 90.0°				Arc Distance: Out to 113.0 NM Altitude: 9000.0 to 18000.0 ft		
9	TRV FAA 704266-73 TRV [IFPA]	N27° 40' 42.33", W080° 29' 23.01"	7.0 W	130	19.5	117.3	TRV FAA 704266-73	
ESV:		Bearing [True]: 63.0° to 148.0° Bearing [Mag]: 70.0° to 155.0°				Arc Distance: Out to 91.0 NM Altitude: 6000.0 to 15000.0 ft		
10	PHK FAA 900991-43 PHK [IFPA]	N26° 46' 57.87", W080° 41' 29.16"	0.0 E	130	15.5	115.4	PHK FAA 900991-43	
ESV:		Bearing [True]: 143.0° to 238.0° Bearing [Mag]: 143.0° to 238.0°				Arc Distance: Out to 55.0 NM Altitude: 3000.0 to 16000.0 ft		
11	TRV FAA 704266-78 TRV [IFPA]	N27° 40' 42.33", W080° 29' 23.01"	7.0 W	130	19.5	117.3	TRV FAA 704266-78	
ESV:		Bearing [True]: 33.0° to 93.0° Bearing [Mag]: 40.0° to 100.0°				Arc Distance: Out to 113.0 NM Altitude: 8900.0 to 18000.0 ft		
12	PBI FAA 882483-063 PBI [IFPA]	N26° 40' 48.20", W080° 05' 11.36"	3.0 W	130	15.7	115.7	PBI FAA 882483-063	
ESV:		Bearing [True]: 17.0° to 117.0° Bearing [Mag]: 20.0° to 120.0°				Arc Distance: Out to 160.0 NM Altitude: 17100.0 to 23000.0 ft		
13	TRV FAA 704266-72 TRV [IFPA]	N27° 40' 42.33", W080° 29' 23.01"	7.0 W	130	19.5	117.3	TRV FAA 704266-72	
ESV:		Bearing [True]: 23.0° to 63.0° Bearing [Mag]: 30.0° to 70.0°				Arc Distance: Out to 152.0 NM Altitude: 15700.0 to 18100.0 ft		
14	FLL FAA 121409-24 FLL [IFPA]	N26° 04' 26.18", W080° 09' 59.19"	6.0 W	130	5.6	114.4	FLL FAA 121409-24	
ESV:		Bearing [True]: 24.0° to 64.0° Bearing [Mag]: 30.0° to 70.0°				Arc Distance: Out to 72.0 NM Altitude: 3900.0 to 10000.0 ft		
15	DHP FAA 955265-47 DHP [IFPA]	N25° 47' 59.87", W080° 20' 56.53"	4.0 W	130	5.9	113.9	DHP FAA 955265-47	
ESV:		Bearing [True]: 351.0° to 96.0° Bearing [Mag]: 355.0° to 100.0°				Arc Distance: Out to 80.0 NM Altitude: 5000.0 to 13000.0 ft		
16	PBI FAA 882483-69 PBI [IFPA]	N26° 40' 48.20", W080° 05' 11.36"	3.0 W	130	15.7	115.7	PBI FAA 882483-69	
ESV:		Bearing [True]: 117.0° to 147.0° Bearing [Mag]: 120.0° to 150.0°				Arc Distance: Out to 85.0 NM Altitude: 6000.0 to 18000.0 ft		
17	DHP FAA 955265-46 DHP [IFPA]	N25° 47' 59.87", W080° 20' 56.53"	4.0 W	130	5.9	113.9	DHP FAA 955265-46	

DME DME Assessment Results for FEALX2 path WOLFO_SUMRS

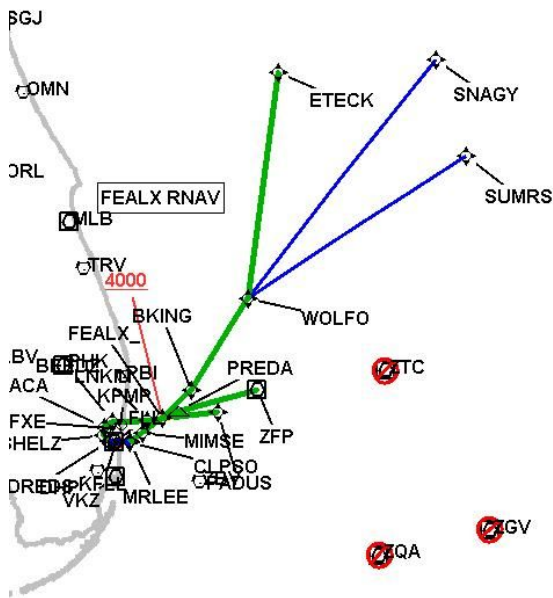
User DMEs								
#	Name	Lat/Lon	MAGVAR	Range	Elevation [ft]	Frequency	Replaces	Status
ESV:		Bearing [True]: 16.0° to 46.0° Bearing [Mag]: 20.0° to 50.0°				Arc Distance: Out to 122.0 NM Altitude: 10400.0 to 13700.0 ft		
18	TRV FAA 704266-075 TRV [IFPA]	N27° 40' 42.33", W080° 29' 23.01"	7.0 W	130	19.5	117.3	TRV FAA 704266-075	
ESV:		Bearing [True]: 23.0° to 133.0° Bearing [Mag]: 30.0° to 140.0°				Arc Distance: Out to 160.0 NM Altitude: 17100.0 to 23000.0 ft		
19	LBV FAA 755486-44 LBV [IFPA]	N26° 49' 41.47", W081° 23' 29.18"	1.0 E	40	30	110.4	LBV FAA 755486-44	
ESV:		Bearing [True]: 11.0° to 161.0° Bearing [Mag]: 10.0° to 160.0°				Arc Distance: Out to 113.0 NM Altitude: 9000.0 to 15000.0 ft		
20	DHP FAA 955265-28 DHP [IFPA]	N25° 47' 59.87", W080° 20' 56.53"	4.0 W	130	5.9	113.9	DHP FAA 955265-28	
ESV:		Bearing [True]: 30.0° to 64.0° Bearing [Mag]: 34.0° to 68.0°				Arc Distance: Out to 84.0 NM Altitude: 7100.0 to 16000.0 ft		
21	ZBV FAA 051542-42 ZBV [IFPA]	N25° 42' 15.00", W079° 17' 40.00"	4.0 W	130	10	116.7	ZBV FAA 051542-42	
ESV:		Bearing [True]: 320.0° to 350.0° Bearing [Mag]: 324.0° to 354.0°				Arc Distance: Out to 80.0 NM Altitude: 4000.0 to 5000.0 ft		
22	FLL FAA 121409-18 FLL [IFPA]	N26° 04' 26.18", W080° 09' 59.19"	6.0 W	130	5.6	114.4	FLL FAA 121409-18	
ESV:		Bearing [True]: 24.0° to 54.0° Bearing [Mag]: 30.0° to 60.0°				Arc Distance: Out to 150.0 NM Altitude: 15100.0 to 18000.0 ft		
23	OMN FAA 694106-54 OMN [IFPA]	N29° 18' 11.70", W081° 06' 45.71"	0.0 E	130	24	112.6	OMN FAA 694106-54	
ESV:		Bearing [True]: 70.0° to 130.0° Bearing [Mag]: 70.0° to 130.0°				Arc Distance: Out to 158.0 NM Altitude: 17000.0 to 18000.0 ft		
24	ZBV FAA 051542-38 ZBV [IFPA]	N25° 42' 15.00", W079° 17' 40.00"	4.0 W	130	10	116.7	ZBV FAA 051542-38	
ESV:		Bearing [True]: 337.0° to 15.0° Bearing [Mag]: 341.0° to 19.0°				Arc Distance: Out to 60.0 NM Altitude: 7600.0 to 16000.0 ft		
25	PHK FAA 900991-44 PHK [IFPA]	N26° 46' 57.87", W080° 41' 29.16"	0.0 E	130	15.5	115.4	PHK FAA 900991-44	
ESV:		Bearing [True]: 111.0° to 145.0° Bearing [Mag]: 111.0° to 145.0°				Arc Distance: Out to 65.0 NM Altitude: 3500.0 to 16000.0 ft		
26	PBI FAA 882483-58 PBI [IFPA]	N26° 40' 48.20", W080° 05' 11.36"	3.0 W	130	15.7	115.7	PBI FAA 882483-58	
ESV:		Bearing [True]: 17.0° to 137.0° Bearing [Mag]: 20.0° to 140.0°				Arc Distance: Out to 78.0 NM Altitude: 5000.0 to 18000.0 ft		

DME Error



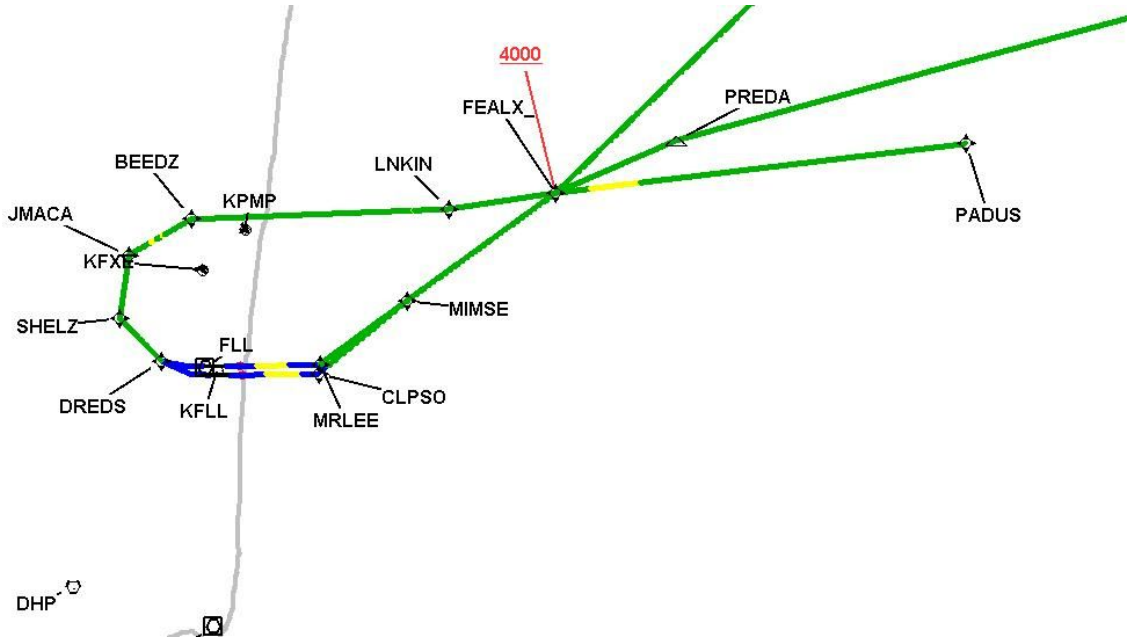
DME DME Assessment Results for FEALX2 path WOLFO_SUMRS

Graphic Depiction 1



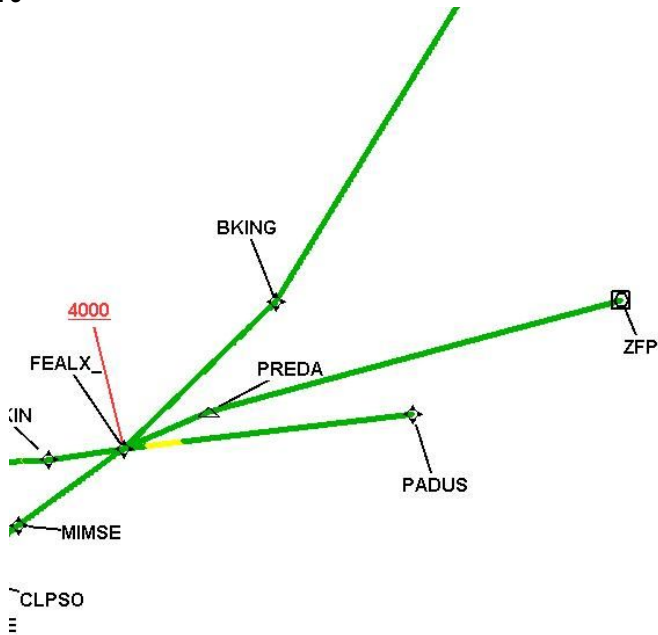
DME DME Assessment Results for FEALX2 path WOLFO_SUMRS

Graphic Depiction 2



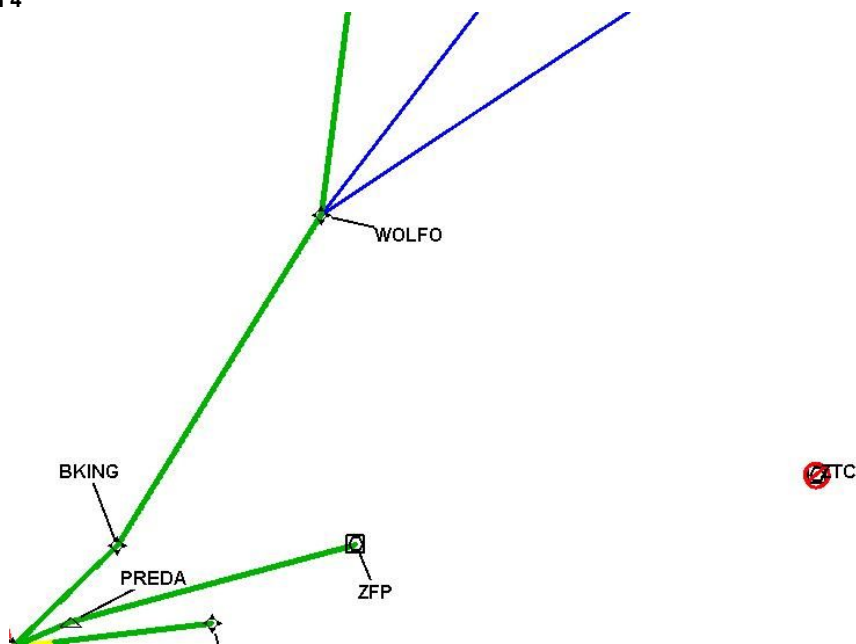
DME DME Assessment Results for FEALX2 path WOLFO_SUMRS

Graphic Depiction 3



DME DME Assessment Results for FEALX2 path WOLFO_SUMRS

Graphic Depiction 4



Graphic Depiction 5

