



Flight Procedures Cover Page	Task Action: P-NOTAM	Task Type: IAP	Estimated Chart Date: 08/11/2022	APWS Task ID: B633EF3D54C04114B8D81E530FBF59E5	APWS Project ID: 09DE6A65DB0C43E6B7E7C62C3CA80A2C
Procedure: RNAV (GPS) RWY 8 AMDT 1A		Enroute: NO	Specialist: Combs, Patrick		Agreement Number:
Airport ID: KLHX		Airport City: LA JUNTA		State: CO	
Facility ID:	Facility Type:	Flight Inspection Remark Type:			
<p>Procedure Comments: ORDER 8260.3, CHAPTER 2, NEW CIRCLING CRITERIA APPLIED.</p> <p>CONTACT JASON KRETSCHMER, AJV-A421, 405-954-4019.</p> <div style="text-align: center; margin-top: 100px;"> <i>Digitally signed by</i>  <b>JASON KRETSCHMER</b>  Jun 15, 2022 </div> <div style="text-align: right; margin-top: 100px;">  </div> <div style="text-align: right; margin-top: 300px;">  </div>					

WAAS CH <b>97613</b> <b>W08A</b>	APP CRS <b>081°</b>	Rwy Idg <b>6849</b> TDZE <b>4229</b> Apt Elev <b>4229</b>
--	------------------------	---

ACTIVE

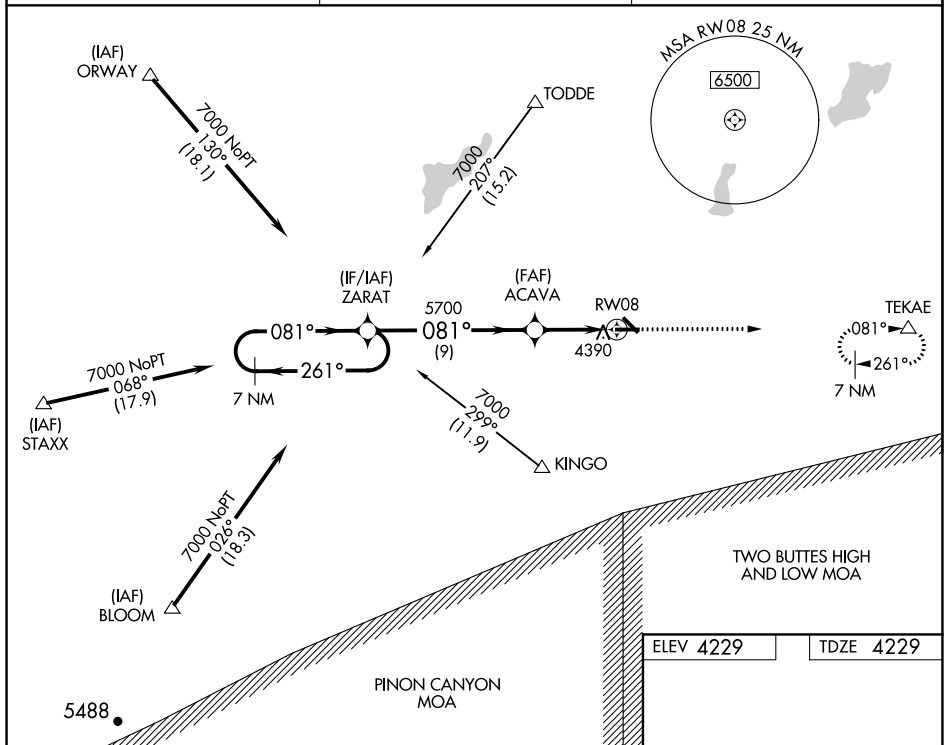
RNAV (GPS) RWY 8  
LA JUNTA MUNI (LHX)

**T** Baro-VNAV NA when using Lamar altimeter setting. For uncompensated Baro-VNAV systems, LNAV/VNAV NA below -23°C (-9°F) or above 40°C (104°F). DME/DME RNP-0.3 NA.

**A** Visibility reduction by helicopters NA. When local altimeter setting not received, use Lamar altimeter setting and increase all DA/MDA 180 feet and increase all visibilities  $\frac{3}{4}$  mile.

**MISSED APPROACH:**  
Climb to 7000 direct  
TEKAE and hold.

ASOS <b>135.525</b>	DENVER CENTER <b>128.375 379.95</b>	UNICOM <b>123.0 (CTAF) 0</b>
------------------------	--	---------------------------------



**ZARAT**

7 NM Holding Pattern  
7000  
← 261°  
→ 081°

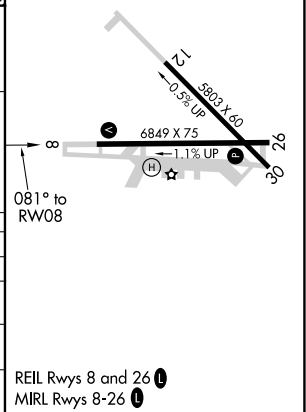
**ACAVA**

5700  
081° → 087°

RW08

9 NM 4.4 NM

CATEGORY	A	B	C	D
LPV DA	4528-1		299 (300-1)	
LNAV/VNAV DA	4738-1¾		509 (600-1¾)	
LNAV MDA	4700-1 471 (500-1)		4700-1¼ 471 (500-1¼)	4700-1½ 471 (500-1½)
CIRCLING	4740-1 511 (600-1)		4740-1½ 511 (600-1½)	4780-2 551 (600-2)



**AIRPORT ID:** KLHX  
**AIRPORT NAME:** LA JUNTA MUNI  
**CITY/STATE:** LA JUNTA, CO  
**PROCEDURE:** RNAV (GPS) RWY 8  
**AMD #:** AMDT 1A  
**MAP SCALE:** 1:100,000

Circling CAT D TOWER (4492) 08-020309

Circling CAT A/B/C  
TOWER (4390) 08-001117

