

Flight Procedures Cover Page	Task Action: FLIGHT CHECK	Task Type: IAP	Estimated Chart Date: 11/30/2023	APWS Task ID: B60DEAEEE6FA475BB6EDE6E03B4E829F	APWS Project ID: E15EF6D52DB24643B0557C2E5EAF407F
Procedure: RNAV (GPS) RWY 12 AMDT 2		Enroute: NO	Specialist: Tuttle, Judith		Agreement Number:
Airport ID: KFBL			Airport City: FARIBAULT		State: MN
Facility ID:	Facility Type:	Flight Inspection Remark Type: New FC Slot			
<div>Procedure Comments: ACTIVE DATA USED FOR KFBL.</div> <div>REMOVED FEEDER SEGMENT FROM MKT VOR/DME – MKT VOR/DME DECOMMISSIONING, VORMON.</div> <div>WAIVERS (1): CAPTURE FIX WAIVER. TEMPORARY WAIVER TO NOT DEVELOP A CAPTURE FIX. APPLICABLE STANDARD IS FAAO 8260.58B, APPENDIX C.PARA 2A(1).</div> <div>CONTACT: ERIC SUSKI, 405.954.7331.</div> <div><div>QUALITY 9 CHECKED BEGUE</div><div>QUALITY 34 CHECKED</div></div>					

<b>FIPC BASIC FORM</b>							
<b>PROCEDURE:</b> RNAV (GPS) RWY 12 AMDT 2			<b>AIRPORT NAME:</b> FARIBAULT MUNI-LIZ WALL		<b>AIRPORT ID:</b> KFBL	<b>SPECIAL CONTROL NO:</b> BG-08-149-23	
<b>FAC ID:</b> KFBL12.02		<b>CITY:</b> FARIBAULT			<b>ST:</b> MN	<b>ORIG CHART DATE:</b> 11/30/2023	
<b>DFL TYPE:</b> PROC/S	<b>THIRD PARTY:</b> <input type="checkbox"/> YES	<b>EST. TIME ON SITE:</b> 0.4	<b>REIMB. NUMBER:</b> AC0721		<b>PTS TASK ID:</b> B60DEAEEEE6FA475BB6EDE6E03B4E829F		
<b>PREFLIGHT NOTES</b>							
<b>REVIEWER:</b> edward w mesa					<b>DATE:</b> 08/29/2023		
<b>COMMENTS:</b>					<b>CHECK ONE:</b>		
					<input checked="" type="checkbox"/> FLT CK REQ <input type="checkbox"/> NFCR <input type="checkbox"/> REJECT		
							YES
					<b>CPV COMPLETE?</b>		X
<b>PROCEDURE RESULTS</b>							
<b>INSPECTION DATE:</b> 08/28/2023		<b>CREW #:</b> VN283	<b>N #:</b> N85	<b>INSTRUMENT PROCEDURE STATUS:</b> <input checked="" type="checkbox"/> SAT <input type="checkbox"/> SAT W/CHANGES <input type="checkbox"/> UNSAT		<b>ARINC CODING:</b> <input checked="" type="checkbox"/> SAT <input type="checkbox"/> SAT/GOLD <input type="checkbox"/> UNSAT	
<b>FLIGHT INSPECTOR SIGNATURE:</b> edward w mesa @ 08/28/2023 14:25			<b>PRINTED NAME:</b> MESA, EDWARD WILLIAM			<b>NOTAM INITIATED?</b> <input type="checkbox"/> YES <input checked="" type="checkbox"/> NO	
<b>FLIGHT INSPECTOR REMARKS:</b>							
<b>IN-FLIGHT OBSTACLE REPORT</b>							
<b>OBSTRUCTION ID #:</b>		<b>COORDINATES OR LOCATION:</b>		<b>GNSS ALTITUDE (MSL):</b>		<b>BAROMETRIC ALTITUDE (MSL):</b>	
<b>HEIGHT ABOVE GROUND LEVEL:</b>							

**1. FLIGHT PROCEDURE IDENTIFICATION:**

FARIBAULT, MN  
FARIBAULT MUNI-LIZ WALL STROHFUS FLD (KFBL)  
  
RNAV (GPS) RWY 12

**2. WAIVER REQUIRED AND APPLICABLE STANDARD:**

Request temporary waiver to not develop a capture fix. Applicable Standard is FAAO 8260.58B, Appendix C, para 2a(1): Establish a capture fix. Construct a TF leg aligned with the FAC that is common to all intermediate segments. The start fix of the leg is designated the capture fix. Alternatively where operationally necessary, the capture fix may be placed on or at the start of an RF leg. The preliminary location of the capture fix may be less than 2 NM but no closer than 1 NM prior to the PFAF.

**3. REASON FOR WAIVER (JUSTIFICATION FOR NONSTANDARD TREATMENT):**

The intent of a capture fix is to ensure aircraft can capture the glide slope when turning on to the final course prior to the PFAF. Flight Standards has stated criteria for development of a capture fix for intermediate segments aligned with the final approach course is currently under review. This temporary waiver will be in place until the change to capture fix language is reflected in criteria.

**4. EQUIVALENT LEVEL OF SAFETY PROVIDED:**

The intermediate segment for this procedure is 7.00 NM and aligned with the final approach course. There are no turns between the intermediate fix (IF) and the final approach fix (FAF). The turn at the IF has a DTA that is no closer than 2NM prior to the PFAF. The altitudes provided at the IF and FAF allow for continuous descent through the intermediate and final segments.

**5. ALTERNATIVE ACTIONS DEEMED NOT FEASIBLE:**

NA

**6. COORDINATION WITH USER ORGANIZATIONS (SPECIFY):**

ZMP, AMGR

**7. SUBMITTED BY:**

DATE	OFFICE IDENTIFICATION	TITLE
08/02/23	AJV-A430	MANAGER

**SIGNATURE**

**8. AFS ACTIONS:**

☐ APPROVED ☐ DISAPPROVED ☐ NOT REQUIRED

*Digitally signed by*

**ERIC N SUSKI**

Aug 11, 2023

**COMMENTS:**

DATE	ROUTING SYMBOL	SIGNATURE
------	----------------	-----------

FARIBAULT, MINNESOTA

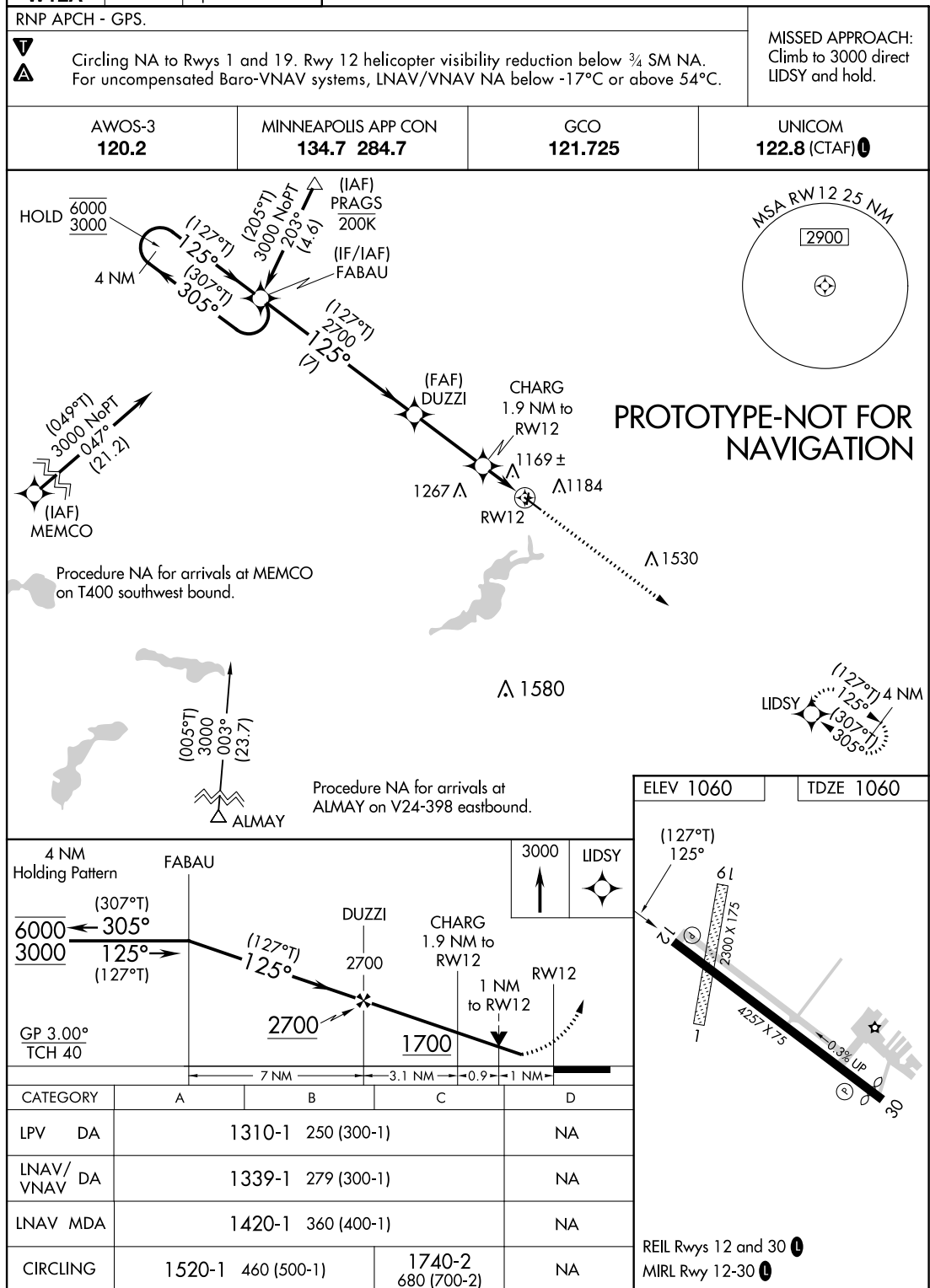
AL-5425 (FAA)

FIG

WAAS CH <b>81932</b> <b>W12A</b>	APP CRS <b>125°</b>	Rwy Idg TDZE <b>1060</b> Apt Elev <b>1060</b>
--	------------------------	---

# RNAV (GPS) RWY 12

FARIBAULT MUNI-LIZ WALL STROHFUS FLD (FBL)



AUTOMATED AL-5425 RNAV (GPS) RWY 12

NC-1

8-3-23

COMPILER: HD

REVIEWER:

DBL CHKR:

EFF: FIG

FARIBAULT, MINNESOTA

FARIBAULT MUNI-LIZ WALL STROHFUS FLD (FBL)

Amdt 2 FIG

44°20'N-93°19'W

RNAV (GPS) RWY 12

OLD

FARIBAULT, MINNESOTA

AL-5425 (FAA)

21112

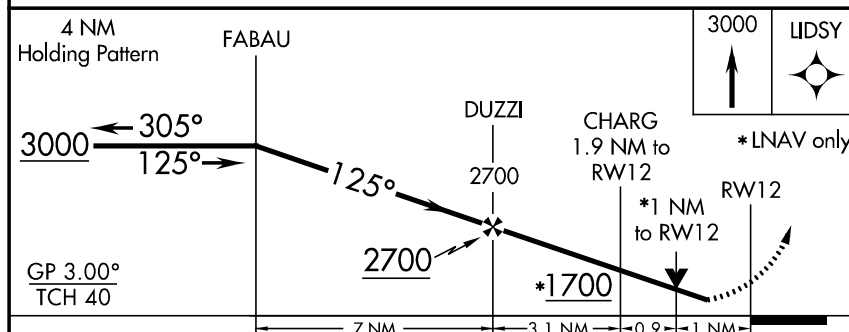
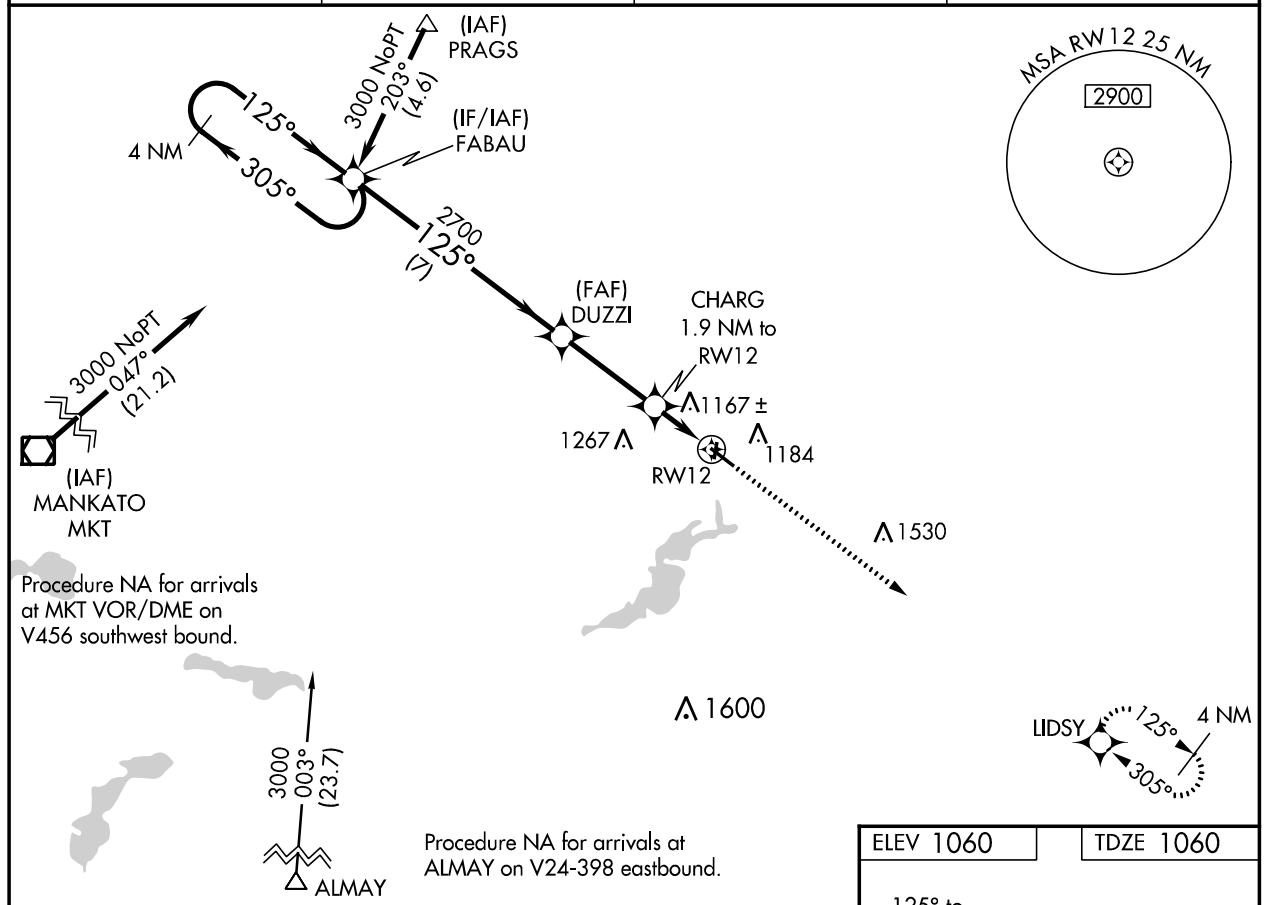
WAAS CH <b>81932</b> <b>W12A</b>	APP CRS <b>125°</b>	Rwy Idg TDZE Apt Elev	<b>4257</b> <b>1060</b> <b>1060</b>
--	------------------------	-----------------------------	---

# RNAV (GPS) RWY 12

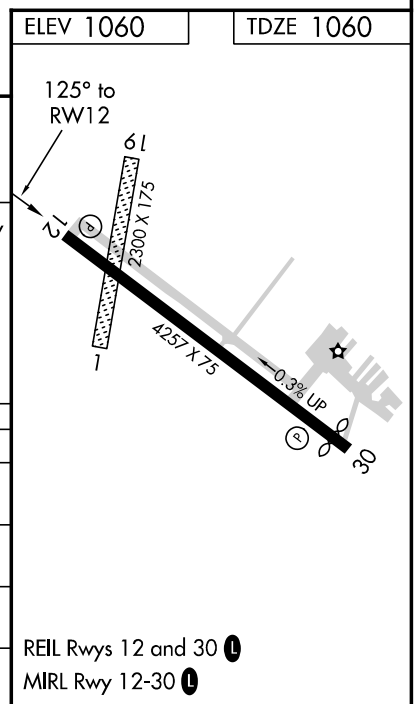
FARIBAULT MUNI-LIZ WALL STROHFUS FLD (FBL)

<p>▼ Baro-VNAV and VDP NA when using Owatonna altimeter setting. For uncompensated Baro-VNAV systems, LNAV/VNAV NA below -17°C (2°F) or above 54°C (130°F). DME/DME RNP-0.3 NA. When local altimeter setting not received, use Owatonna altimeter setting and increase all DA 41 feet and all MDA 60 feet; increase LNAV Cat C visibility ½ mile. Rwy 12 helicopter visibility reduction below ¾ SM NA. Circling to Rwy 1, 19 NA.</p>	<p>MISSED APPROACH: Climb to 3000 direct LIDSY and hold.</p>
---	--

AWOS-3 <b>120.2</b>	MINNEAPOLIS APP CON <b>134.7 284.7</b>	GCO <b>121.725</b>	UNICOM <b>122.8 (CTAF) 0</b>
------------------------	---	-----------------------	---------------------------------



CATEGORY	A	B	C	D
LPV DA	1310-1	250 (300-1)		NA
LNAV/VNAV DA	1331-1	271 (300-1)		NA
LNAV MDA	1420-1	360 (400-1)		NA
CIRCLING	1520-1	460 (500-1)	1740-2 680 (700-2)	NA



FARIBAULT, MINNESOTA  
Amdt 1D 25MAR21

44°20'N-93°19'W

FARIBAULT MUNI-LIZ WALL STROHFUS FLD (FBL)

# RNAV (GPS) RWY 12

NC-1, 23 FEB 2023 to 23 MAR 2023

NC-1, 23 FEB 2023 to 23 MAR 2023



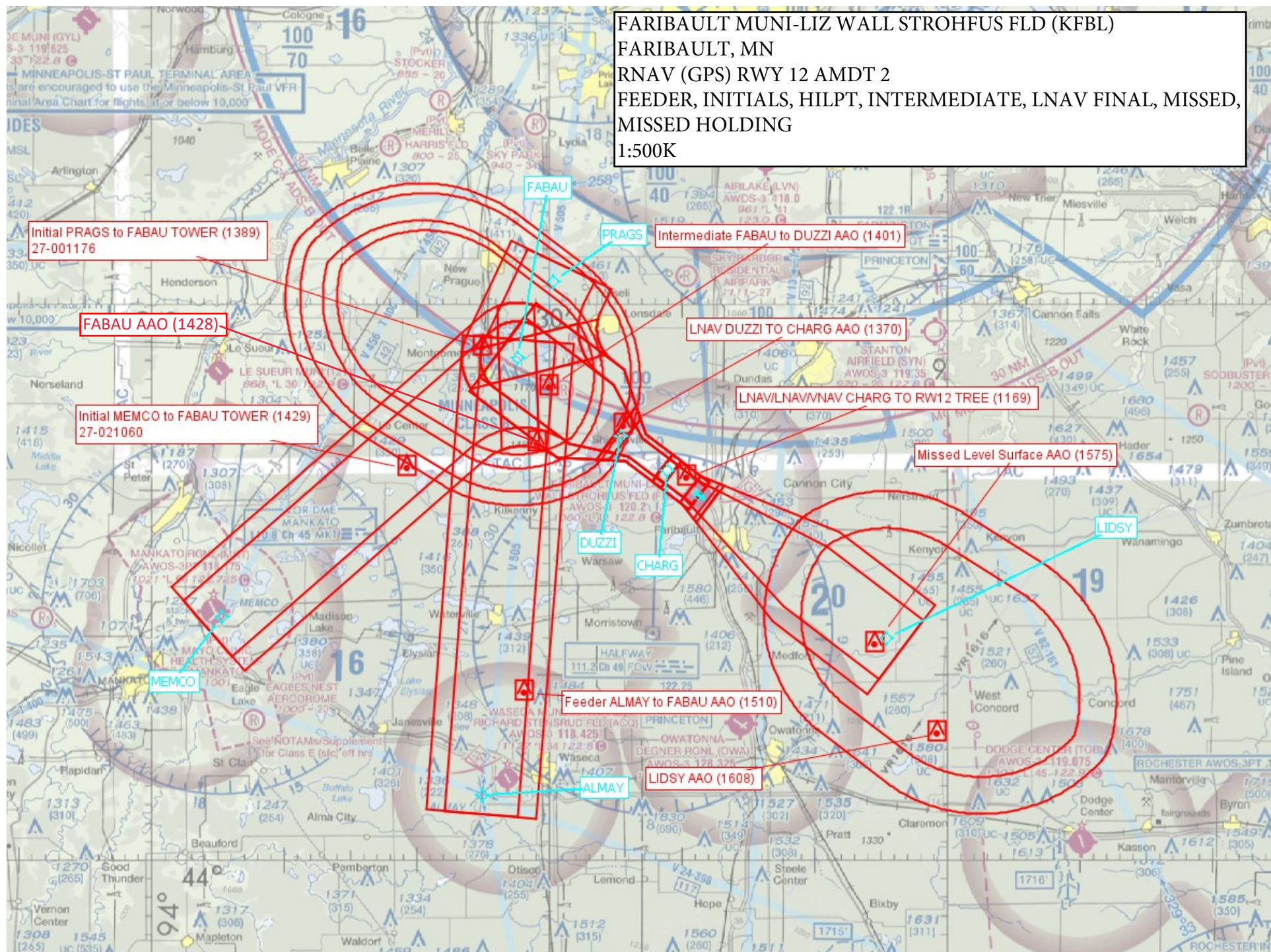
FARIBAULT MUNI-LIZ WALL STROHFUS FLD (KFBL)

FARIBAULT, MN

RNAV (GPS) RWY 12 AMDT 2

FEEDER, INITIALS, HILPT, INTERMEDIATE, LNAV FINAL, MISSED,  
MISSED HOLDING

1:500K









FARIBAULT MUNI-LIZ WALL STROHFUS FLD (KFBL)

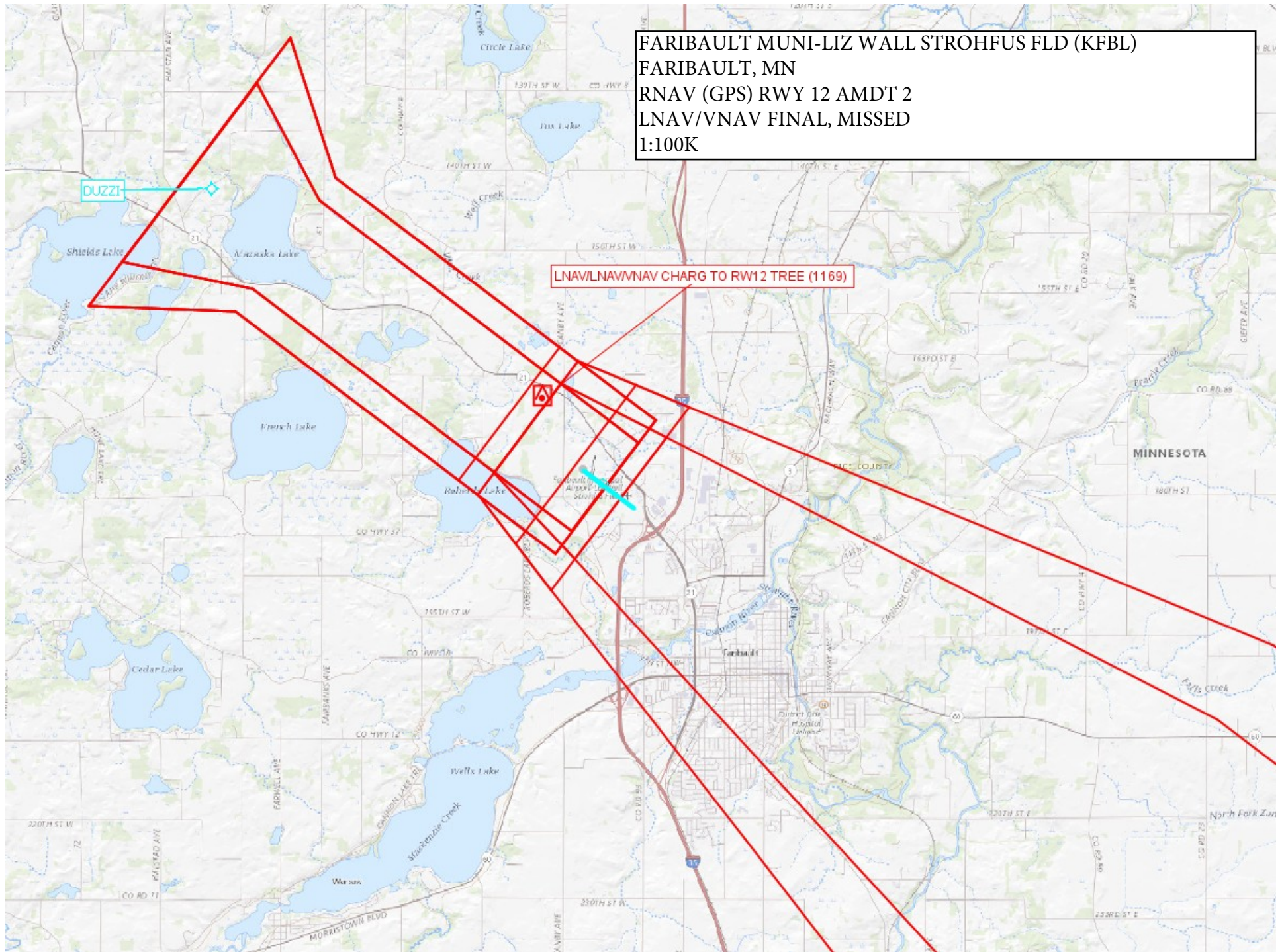
FARIBAULT, MN

RNAV (GPS) RWY 12 AMDT 2

LNAV/VNAV FINAL, MISSED

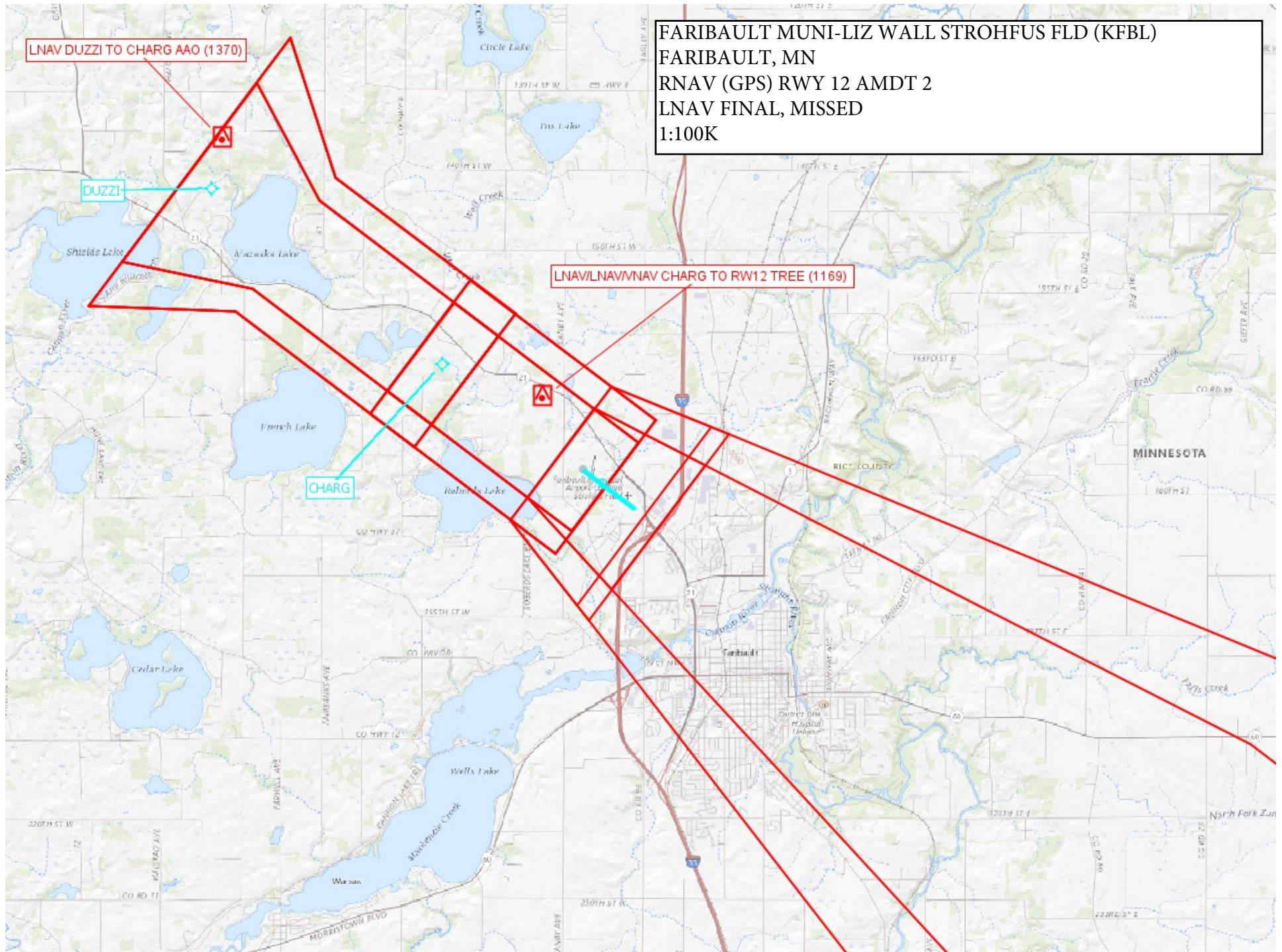
1:100K

LNAV/LNAV/VNAV CHRG TO RWY 12 TREE (1169)





FARIBAULT MUNI-LIZ WALL STROHFUS FLD (KFBL)  
FARIBAULT, MN  
RNAV (GPS) RWY 12 AMDT 2  
LNAV FINAL, MISSED  
1:100K





FARIBAULT MUNI-LIZ WALL STROHFUS FLD  
(KFBL) FARIBAULT, MN  
RNAV (GPS) RWY 12 AMDT 2  
CIRCLING:100K

