

Flight Procedures Cover Page	Task Action: P-NOTAM	Task Type: IAP	Estimated Chart Date: 09/05/2024	APWS Task ID: B5A51589B7374E1A988018E5543D1256	APWS Project ID: 511F4BD6CE214A96A35A6A932F89A00F
Procedure: COPTER ILS OR LOC RWY 30 AMDT 1A		Enroute: NO	Specialist: Feronti, Tia		Agreement Number:
Airport ID: KGYG			Airport City: GARY/CHICAGO		State: IN
Facility ID:	Facility Type:	Flight Inspection Remark Type:			
<div>Procedure Comments:</div> <div>PROCESSED IAW TECHNICAL SUPPORT GROUP (AJF-17) MEMO DATED 07/07/2021 GUIDANCE FOR PROCEDURAL CHANGES REQUIRING FLIGHT INSPECTION/VALIDATION.</div> <div>CITY NAME CHANGED.</div> <div>CONTACT DAVID DANNER, AJV-A420, 405-954-5077.</div> <div><div>QUALITY 41 CHECKED</div><div>QUALITY 32 CHECKED Digitally signed by PABLO ORTIZ-JR Jun 04, 2024</div></div>					

GARY, INDIANA

AL-748 (FAA)

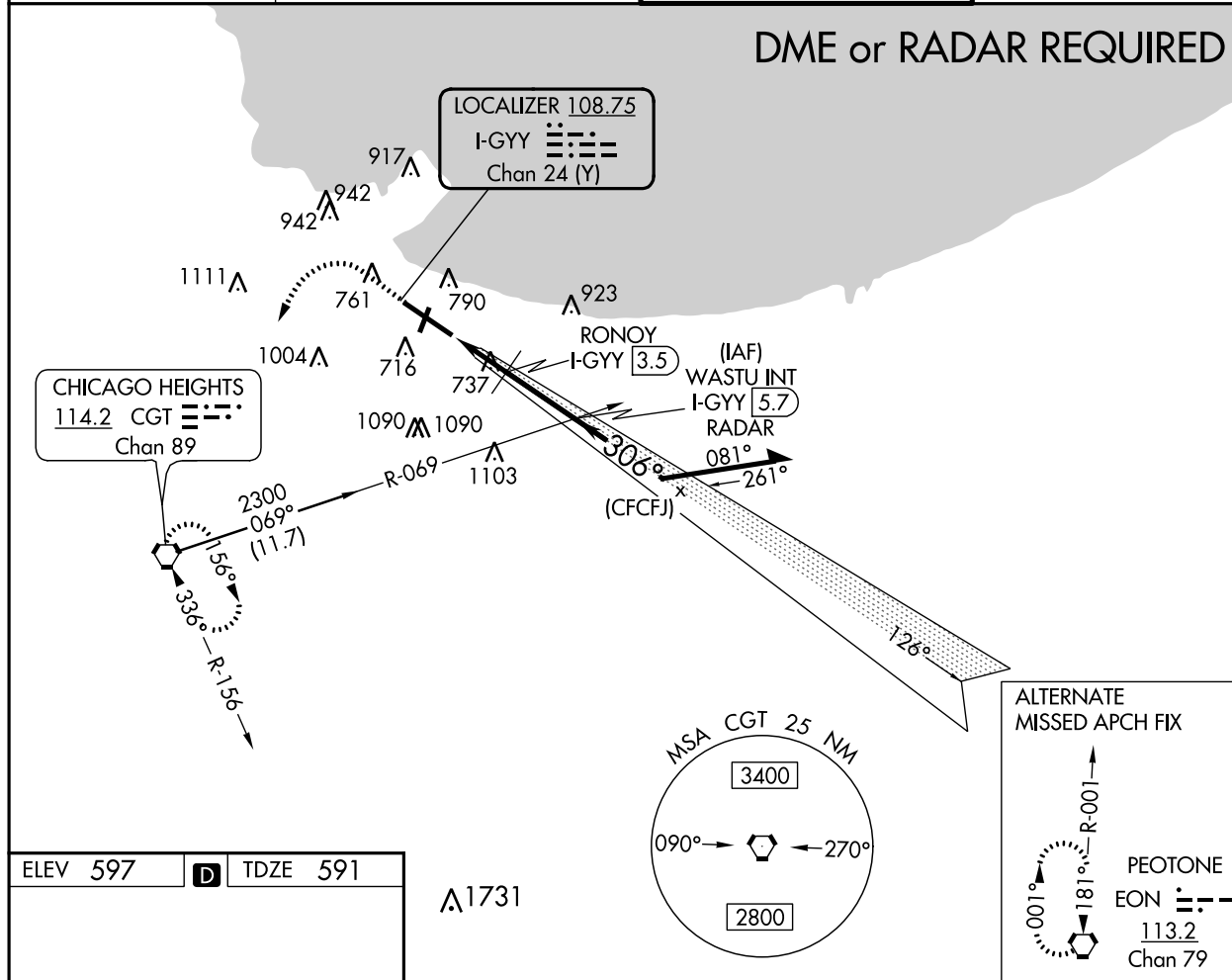
23222

LOC I-GYY 108.75 Chan 24 (Y)	APP CRS 306°	Rwy Idg TDZE Apt Elev	7959 591 597
--	------------------------	-----------------------------	---


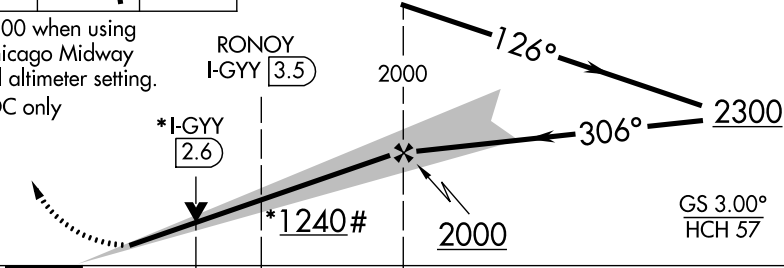
COPTER ILS or LOC RWY 30 GARY/CHICAGO INTL (GYY)

<p>When local altimeter setting not recieved, use Chicago Midway Intl altimeter setting and increase all DA 46 feet and all MDA 60 feet. VDP NA with Chicago Midway Intl altimeter setting.</p>	<p>MALSR A5</p>	<p>MISSED APPROACH: Climb to 1500 then climbing left turn to 2300 direct CGT VORTAC and hold.</p>
---	---------------------	---

ATIS 134.575	CHICAGO APP CON 133.1 285.6	GARY TOWER ★ 125.6 (CTAF) 0	GND CON 121.9
------------------------	---------------------------------------	--	-------------------------



ELEV 597	D	TDZE 591
<p>REIL Rwy 2, 12 and 20 L HIRL Rwy 12-30 L MIRL Rwy 2-20 L</p> <p>FAF to MAP 4.3 NM</p> <p>Knots 45 60 75 90 105 Min:Sec 5:44 4:18 3:26 2:52 2:27</p>		

1500 ↑	2300 ↷	CGT 	WASTU INT I-GYY 5.7 RADAR	Remain within 5 NM
#1300 when using Chicago Midway Intl altimeter setting. *LOC only	RONOY I-GYY 3.5	*I-GYY 2.6	*1240#	2300
				
CATEGORY	COPTER			
S-ILS 30	791-¼ 200 (200-¼)			
S-LOC 30	1240-¼ 649 (700-¼)			
RONOY FIX MINIMUMS				
S-LOC 30	1000-¼ 409 (500-¼)			

GARY, INDIANA
Amdt 1 20AUG15

41°37'N-87°25'W

GARY/CHICAGO INTL (GYY)

COPTER ILS or LOC RWY 30