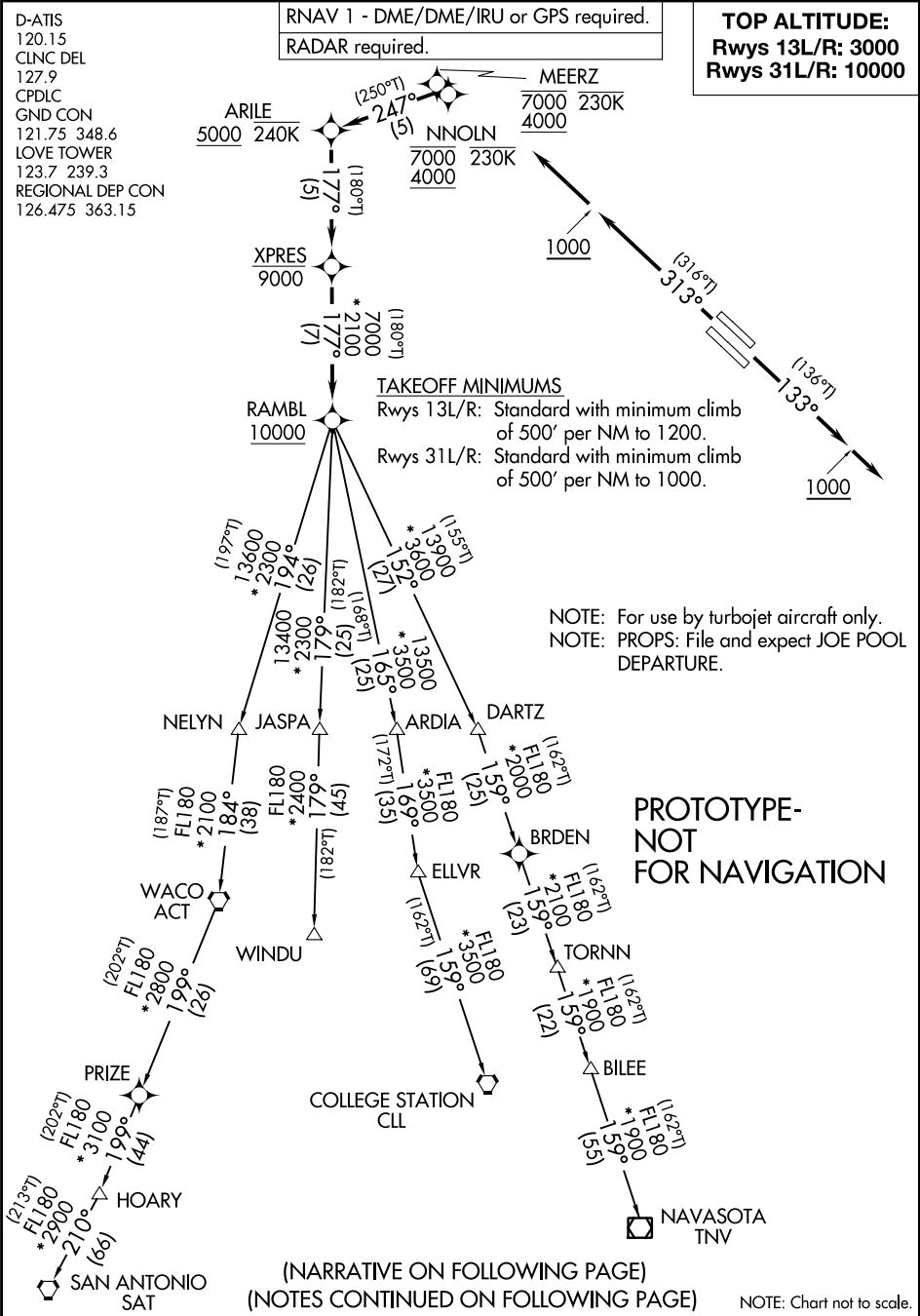


Flight Procedures Cover Page	Task Action: Abbreviated Amendment	Task Type: SID	Estimated Chart Date: 12/29/2022	APWS Task ID: B578AF59D71648B8B422C062B0F375A2	APWS Project ID: 59E864CA4A2F4287A6E6484A167C902F
Procedure: SID RAMBL SIX (RNAV)		Enroute: YES	Specialist: Sarmiento, April		Agreement Number:
Airport ID: KDAL			Airport City: DALLAS		State: TX
Facility ID:	Facility Type:	Flight Inspection Remark Type:			
<div>Procedure Comments: ABBREVIATED AMENDMENT - USED ACTIVE DATA FOR KDAL</div> <div>PROCESSED IAW TECHNICAL SUPPORT GROUP (AJF-17) MEMO DATED 07/07/2021, SUBJECT: GUIDANCE FOR PROCEDURAL CHANGES REQUIRING FLIGHT INSPECTION/VALIDATION</div> <div>CONTACT CASIMIR TABAKA (405)954-7931</div> <div>QUALITY 20 CHECKED</div> <div>QUALITY 15 CHECKED</div>					



RAMBL SIX DEPARTURE (RNAV)

(RAMBL6.RAMBL) FIG

DALLAS, TEXAS

DALLAS LOVE FLD (DAL)

RAMBL SIX DEPARTURE (RNAV)



DEPARTURE ROUTE DESCRIPTION

TAKEOFF RUNWAYS 13L/R: Climb on heading 133° to 1000, then heading 133° or as assigned by ATC, maintain 3000, thence

. . . .expect RADAR vectors to cross XPRES at or below 9000, then on track 177° to cross RAMBL at or above 10000, then on (transition). Expect filed altitude 10 minutes after departure.

TAKEOFF RUNWAY 31L: Climb on heading 313° to 1000, then direct to cross NNOLN between 4000 and 7000 at or below 230K, then on track 247° to cross ARILE at or above 5000 and at or below 240K, then on track 177° to cross XPRES at or below 9000, thence

TAKEOFF RWY 31R: Climb on heading 313° to 1000, then direct to cross MEERZ between 4000 and 7000 at or below 230K, then on track 247° to cross ARILE at or above 5000 and at or below 240K, then on track 177° to cross XPRES at or below 9000, thence

. . . .on track 177° to cross RAMBL at or above 10000, then on (transition). Maintain 10000. Expect filed altitude 10 minutes after departure.

COLLEGE STATION TRANSITION (RAMBL6.CLL)

ELLVR TRANSITION (RAMBL6.ELLVR)

HOARY TRANSITION (RAMBL6.HOARY)

NAVASOTA TRANSITION (RAMBL6.TNV)

SAN ANTONIO TRANSITION (RAMBL6.SAT)

TORNN TRANSITION (RAMBL6.TORNN)

WACO TRANSITION (RAMBL6.ACT)

WINDU TRANSITION (RAMBL6.WINDU)

NOTE: WACO TRANSITION: For aircraft inbound to Waco or Gray terminal area airports.

NOTE: SAN ANTONIO TRANSITION: For aircraft overflying Centex and San Antonio.

NOTE: WINDU TRANSITION: For aircraft inbound to Austin or San Antonio terminal area airports.

NOTE: COLLEGE STATION TRANSITION: For piston and turboprop aircraft inbound to William P Hobby, Ellington, Scholes International at Galveston, or Texas Gulf Coast regional airports. All other aircraft types inbound to all other Houston terminal area airports except George Bush Intercontinental/Houston, Conroe/North Houston Regional, David Wayne Hooks Memorial, Liberty Municipal, or Cleveland Municipal airports.

NOTE: ELLVR TRANSITION: For turbojet aircraft inbound to William P Hobby, Ellington, Scholes International at Galveston, or Texas Gulf Coast regional airports

NOTE: TORNN TRANSITION: For aircraft inbound to George Bush Intercontinental/Houston, Conroe/North Houston Regional, David Wayne Hooks Memorial, Liberty Municipal, or Cleveland Municipal airports

PROTOTYPE-NOT FOR NAVIGATION

(RAMBL5.RAMBL) 21112

RAMBL FIVE DEPARTURE (RNAV)

D-ATIS
120.15
CLNC DEL
127.9
CPDLC
GND CON
121.75 348.6
LOVE TOWER
123.7 239.3
REGIONAL DEP CON
126.475 363.15

OLD

DALLAS LOVE FLD (DAL)
DALLAS, TEXAS

TOP ALTITUDE:
Rwys 13L/R: 3000
Rwys 31L/R: 10000

MEERZ
7000 230K
4000
NNOLN
7000 230K
4000
ARILE
5000 240K
247°
(5)

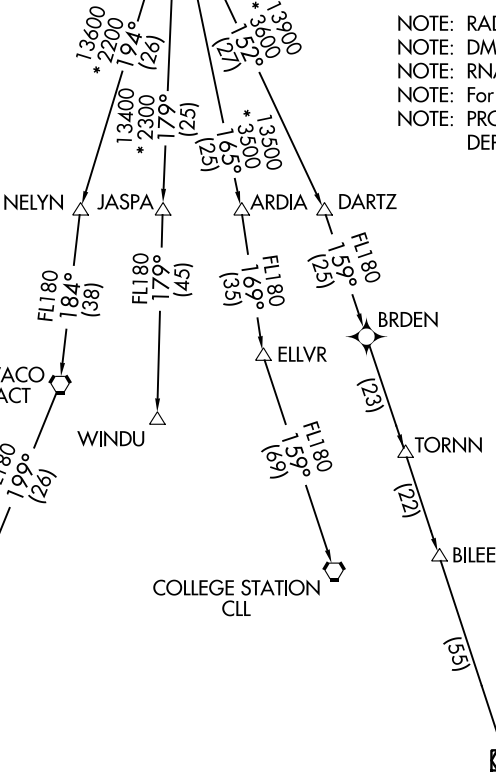
XPRES
9000
177°
(5)
7000
2100
177°
(7)

RAMBL
10000

TAKEOFF MINIMUMS

Rwys 13L/R: Standard with minimum climb of 500' per NM to 1200.
Rwys 31L/R: Standard with minimum climb of 500' per NM to 1000.

NOTE: RADAR required.
NOTE: DME/DME/IRU or GPS required.
NOTE: RNAV 1.
NOTE: For use by turbojet aircraft only.
NOTE: PROPS: File and expect JOE POOL DEPARTURE.



(NARRATIVE ON FOLLOWING PAGE)
(NOTES CONTINUED ON FOLLOWING PAGE)

NOTE: Chart not to scale.

RAMBL FIVE DEPARTURE (RNAV)

(RAMBL5.RAMBL) 10NOV16

DALLAS, TEXAS
DALLAS LOVE FLD (DAL)

SC-2, 14 JUL 2022 to 11 AUG 2022

SC-2, 14 JUL 2022 to 11 AUG 2022



DEPARTURE ROUTE DESCRIPTION

TAKEOFF RUNWAYS 13L/R: Climb heading 133° to 1000, then heading 133° or as assigned by ATC, maintain 3000, thence
. . . .expect RADAR vectors to cross XPRES at or below 9000, then on track 177° to cross RAMBL at or above 10000, then on (transition). Expect filed altitude 10 minutes after departure.

TAKEOFF RUNWAY 31L: Climb heading 313° to 1000, then direct to cross NNOLN at or above 4000, at or below 7000 then on track 247° to cross ARILE at or above 5000, thence

TAKEOFF RWY 31R: Climb heading 313° to 1000, then direct to cross MEERZ at or above 4000, at or below 7000, then on track 247° to cross ARILE at or above 5000, thence
. . . .on track 177° to cross XPRES at or below 9000, then on track 177° to cross RAMBL at or above 10000, then on (transition). Maintain 10000. Expect filed altitude 10 minutes after departure.

- ARDIA TRANSITION (RAMBL5.ARDIA)
- BILEE TRANSITION (RAMBL5.BILEE)
- BRDEN TRANSITION (RAMBL5.BRDEN)
- COLLEGE STATION TRANSITION (RAMBL5.CLL)
- ELLVR TRANSITION (RAMBL5.ELLVR)
- HOARY TRANSITION (RAMBL5.HOARY)
- JASPA TRANSITION (RAMBL5.JASPA)
- NAVASOTA TRANSITION (RAMBL5.TNV)
- NELYN TRANSITION (RAMBL5.NELYN)
- SAN ANTONIO TRANSITION (RAMBL5.SAT)
- TORNN TRANSITION (RAMBL5.TORNN)
- WACO TRANSITION (RAMBL5.ACT)
- WINDU TRANSITION (RAMBL5.WINDU)

- NOTE: WACO TRANSITION: For aircraft inbound to Waco or Gray terminal area airports.
- NOTE: SAN ANTONIO TRANSITION: For aircraft overflying Centex and San Antonio.
- NOTE: WINDU TRANSITION: For aircraft inbound to Austin or San Antonio terminal area airports. aircraft should file and/or expect BLEWE or MARCS STAR at WINDU.
- NOTE: COLLEGE STATION TRANSITION: For aircraft inbound to west Houston terminal area airports.
- NOTE: ELLVR TRANSITION: for aircraft inbound to Houston Hobby, EFD, GLS, and LBX.
- NOTE: TORNN TRANSITION: For aircraft landing Lafayette, Lake Charles, or Beaumont/Port Arthur airports.
- NOTE: BILEE TRANSITION: For aircraft overflying the BILEE INT, thence on the appropriate STAR to George Bush Intercontinental or eastern Houston terminal airports.