

Flight Procedures Cover Page	Task Action: P-NOTAM	Task Type: IAP	Estimated Chart Date: 10/08/2020	APWS Task ID: B56E6224A0AA4C9D8F04EBAA47F1AACD	APWS Request ID: 117ADFE762824A908EB8FEBDABCC0D0A
Procedure: RNAV (GPS) RWY 17 AMDT 1B		Enroute: NO	Specialist: Roslewski, Russell		Agreement Number:
Airport ID:	Airport Name: HINTON MUNI		Airport City: HINTON		State: OK
Facility ID:	Facility Type:	Flight Inspection Remark Type:			
<p>Procedure Comments: P-NOTAM</p> <p>New circling areas - MDAs and controlling obstacles did not change with increased radii.</p> <p>Processed IAW Aircraft Operations Group (AJW-33) Memo, October 3, 2018, Subject: Flight Inspection Review Not Required.</p> <p>Dave Danner, 405-954-5077</p>					

QUALITY
22
CHECKED

7.30.2020
BD

QUALITY
41
CHECKED

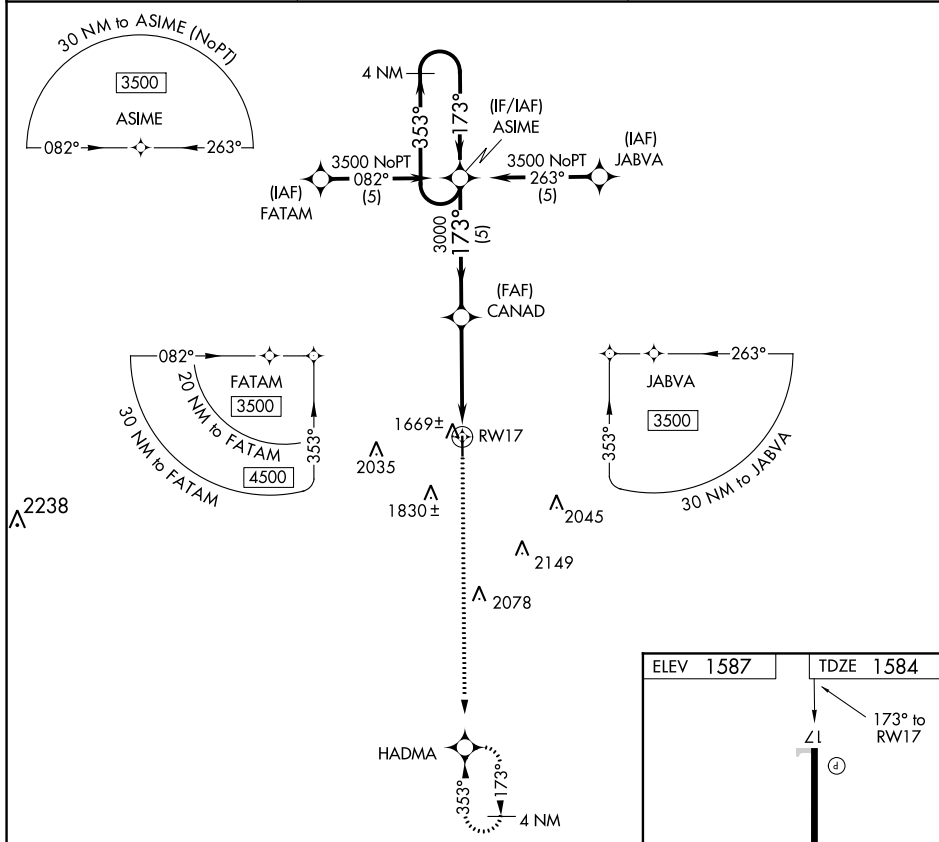
APP CRS 173°	Rwy Idg TDZE 1584	4001 Apt Elev 1587
------------------------	--------------------------------	---------------------------------

RNAV (GPS) RWY 17

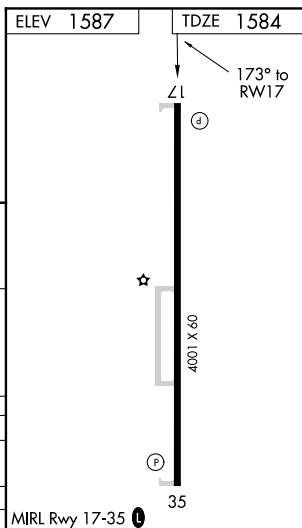
HINTON MUNI (208)

<p>Baro-VNAV NA. DME/DME RNP-0.3 NA.</p> <p>NA Use Weatherford altimeter setting; when not received procedure NA.</p>	MISSED APPROACH: Climb to 3600 direct HADMA and hold.
-----------------------------------------------------------------------------------------------------------------------	-------------------------------------------------------

OJA AWOS-3 118.575	FORT WORTH CENTER 128.4 269.37	UNICOM 123.05 (CTAF) 0
------------------------------	------------------------------------------	----------------------------------



4 NM Holding Pattern		VGSI and RNAV glidepath not coincident (VGSI Angle 3.00/TCH 42).		3600	HADMA
GP 3.00° TCH 42	5 NM		4.3 NM		
CATEGORY	A	B	C	D	
LNNAV/ VNAV DA	2000-1½	416 (500-1½)	NA		
LNNAV MDA	2000-1	416 (500-1)	NA		
CIRCLING	2160-1	573 (600-1)	NA		



208
Hinton Muni
Hinton, OK
1:100k
RNAV (GPS) RWY 17, Amdt 1B
Circling

