

Flight Procedures Cover Page	Task Action: P-NOTAM	Task Type: IAP	Estimated Chart Date: 05/20/2021	APWS Task ID: B55CD17BDC8C4434A6B65359CDC6441A	APWS Project ID: 26054049EFCB41A8A3CA3DD9B194EA13
Procedure: RNAV (GPS) Y RWY 21 AMDT 3A		Enroute: NO	Specialist: Roslewski, Russell		Agreement Number:
Airport ID: KCHS		Airport City: CHARLESTON		State: SC	
Facility ID:	Facility Type:	Flight Inspection Remark Type:			
<p><b>Procedure Comments:</b>            New Circling Cat C MDA based on existing procedure at the airport –.ILS OR LOC RWY 15, Amdt 24B, pending chart date 4/22/21.</p> <p>Jason Kretschmer, 405-954-4019</p> <p style="text-align: center;"><i>Digitally signed by</i>  <b>JASON KRETSCHMER</b>            Apr 01, 2021</p>					

QUALITY  
22  
CHECKED

3.31.2021  
BD

QUALITY  
38  
CHECKED

WAAS CH <b>40499</b> <b>W21A</b>	APP CRS <b>211°</b>	Rwy Idg TDZE <b>43</b> Apt Elev <b>46</b>	<b>7000</b>
----------------------------------------	------------------------	-------------------------------------------------	-------------

## NAV (GPS) Y RWY 21

CHARLESTON AFB/ INTL (CHS)

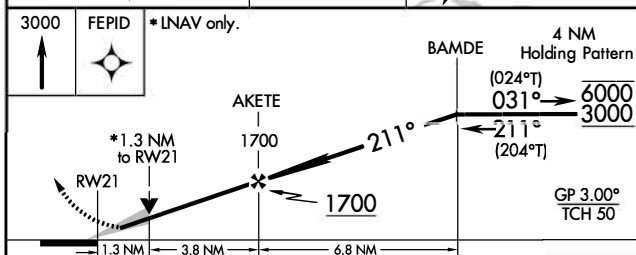
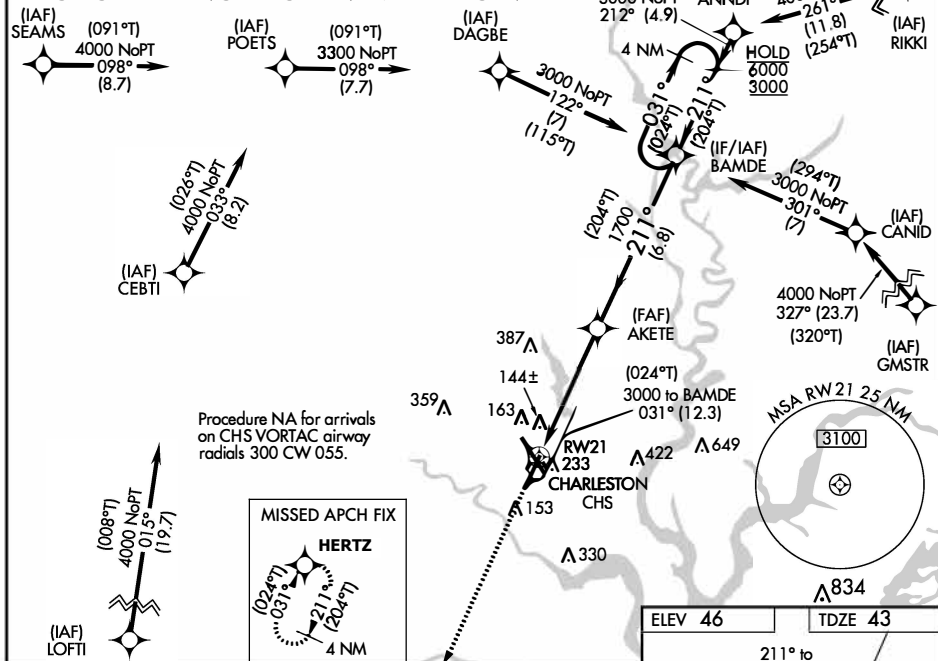
RNP APCH.

For uncompensated Baro-VNAV systems, LNAV/VNAV NA below -5°C or above 54°C.

MISSED APPROACH: Climb to 3000 direct HERTZ and hold.

ATIS	CHARLESTON APP CON	CHARLESTON TOWER	GND CON	CLNC DEL	CPDLC
<b>124.75</b>	<b>120.7 306.925</b>	<b>126.0 239.0</b>	<b>121.9 348.6</b>	<b>127.325 291.65</b>	

### PROTOTYPE-NOT FOR NAVIGATION



CATEGORY	A	B	C	D
LPV DA	293-3/4	250 (300-3/4)		
LNAV/VNAV DA	382-1	339 (400-1)		
LNAV MDA	500-1 457 (500-1)	500-1 3/8 457 (500-1 3/8)		
CIRCLING	540-1 494 (500-1)	600-1 1/2 554 (600-1 1/2)	740-2 1/4 694 (700-2 1/4)	

