

BATAVIA, NEW YORK

OLD (FAA)

19115

WAAS CH 82421 W10A	APP CRS 102°	Rwy Idg TDZE 914 Apt Elev 914
--	------------------------	---

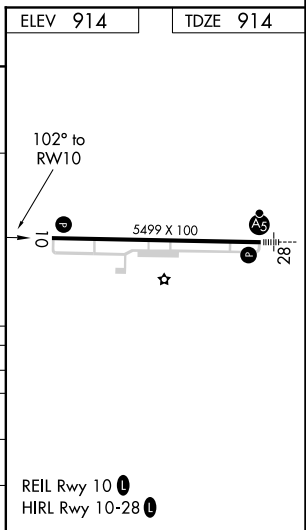
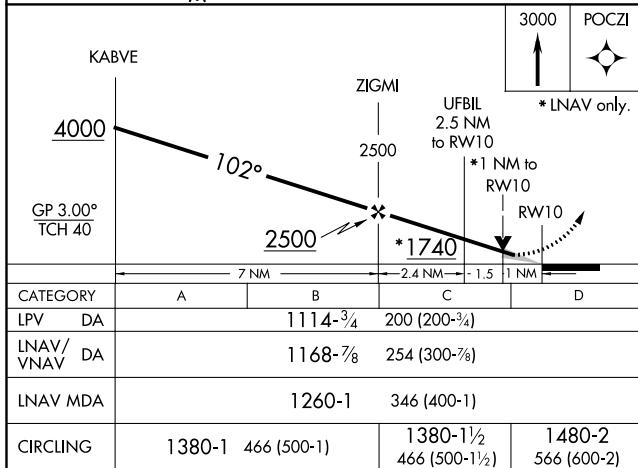
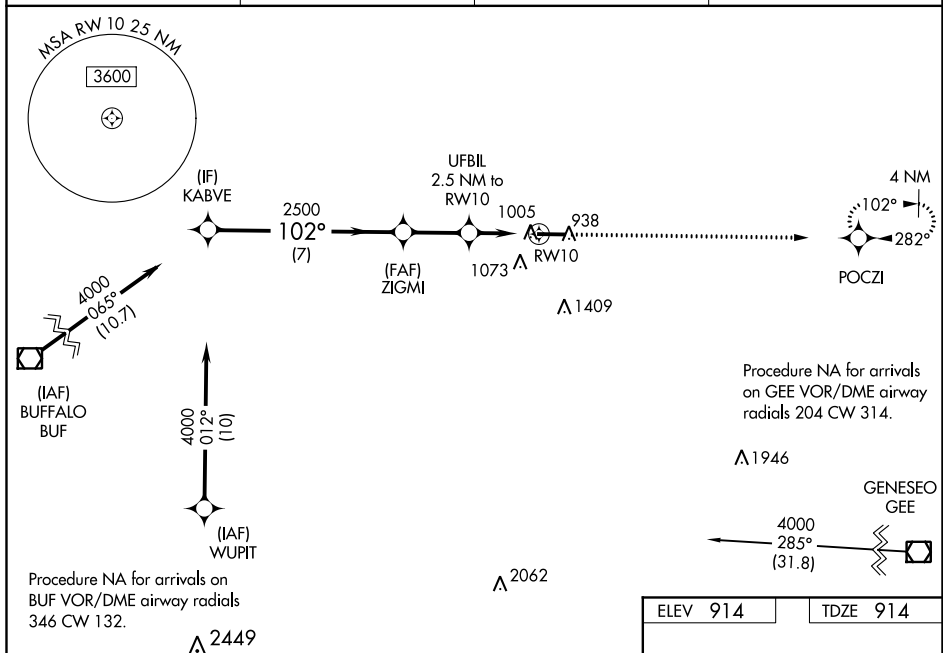
RNAV (GPS) RWY 10

GENESEE COUNTY (GVQ)

NA For uncompensated Baro-VNAV systems, LNAV/VNAV NA below -16°C (4°F) or above 38°C (100°F). DME/DME RNP-0.3 NA. When local altimeter setting not received, use Rochester altimeter setting and increase LPV DA all Cats to 1214, LNAV/VNAV DA all Cats to 1268, and all MDA 120 feet; increase LPV all Cats and Circling Cat D visibility ¼ mile, increase LNAV/VNAV all Cats and LNAV Cats C/D visibility ⅜ mile. Baro-VNAV and VDP NA when using Rochester altimeter setting.

MISSED APPROACH:
Climb to 3000 direct POCZI and hold.

AWOS-3PT 127.525	ROCHESTER APP CON 123.7 322.3	CLNC DEL 121.8	UNICOM 122.7 (CTAF) 0
----------------------------	---	--------------------------	---------------------------------



BATAVIA, NEW YORK
Orig-A 17AUG17

43°02'N-78°10'W

GENESEE COUNTY (GVQ)
RNAV (GPS) RWY 10

NE-2, 23 APR 2020 to 21 MAY 2020

NE-2, 23 APR 2020 to 21 MAY 2020

KG VQ

Genesee County

Batavia, NY

1:100k

Circling - all procedures

