

Flight Procedures Cover Page	Task Action: P-NOTAM	Task Type: IAP	Estimated Chart Date: 06/17/2021	APWS Task ID: B3EA740F24844AEBBDFD5042A1AB567F	APWS Project ID: 5E7F0474EE9244EFA2221C7D8F8A18A2
Procedure: RNAV (GPS) RWY 13L AMDT 1B		Enroute: NO	Specialist: Lafferty, James		Agreement Number:
Airport ID: KVCT			Airport City: VICTORIA		State: TX
Facility ID:	Facility Type:	Flight Inspection Remark Type:			
<p>Procedure Comments:</p> <p>P-NOTAM</p> <p>This Cancels FDC 0/7387</p> <p>Order 8260.3, chapter 2, New Circling Criteria Applied</p> <p>Contact Dave Teffeteller at 202-267-5177</p>					

QUALITY
18
CHECKED

QUALITY
26
CHECKED

WAAS CH 82709 W13A	APP CRS 128°	Rwy ldg 9111 TDZE 115 Apt Elev 115
--	------------------------	---

RNAV (GPS) RWY 13L

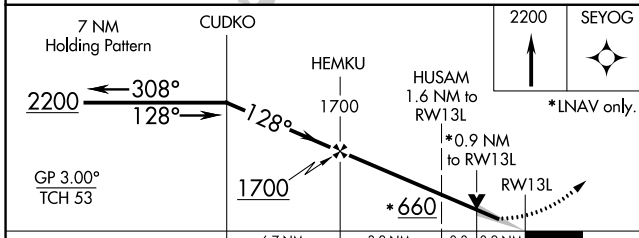
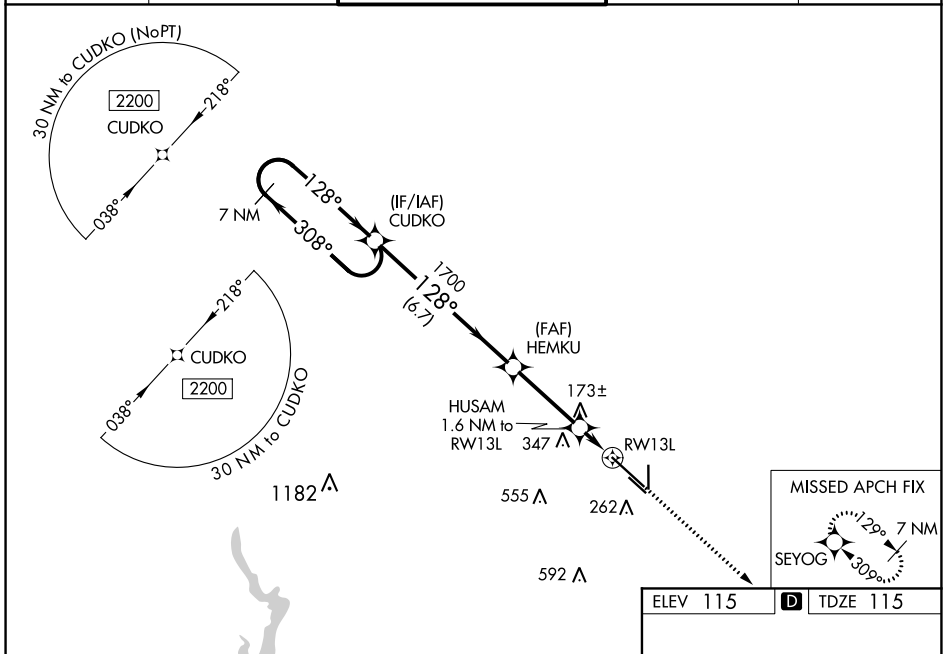
VICTORIA RGNL (VCT)

⚠ Baro-VNAV NA when using Port Lavaca altimeter setting. For uncompensated Baro-VNAV systems, LNAV/VNAV NA below -15°C (5°F) or above 43°C (109°F). When local altimeter setting not received, use Port Lavaca altimeter setting and increase all DA 52 feet and all MDA 60 feet. Increase LNAV Cats C/D/E visibility to ¾ mile. DME/DME RNP-0.3 NA. VDP NA with Port Lavaca altimeter setting. For inop MALSR, increase LPV and LNAV/VNAV Cat E visibility to ¾ mile and LNAV Cat E visibility to 1 mile. For inop MALSR when using Port Lavaca altimeter setting, increase LPV Cat E visibility to ¾ mile, LNAV/VNAV all Cats visibility to 1 mile and LNAV Cats C/D/E visibility to 1½ mile.

MALSR

MISSED APPROACH:
Climb to 2200
direct SEYOG
and hold.

ATIS 119.025	HOUSTON CENTER 135.05 353.6	VICTORIA TOWER ★ 126.075 (CTAF) 0 257.95	GND CON 120.525 239.25	UNICOM 122.7
------------------------	---------------------------------------	--	----------------------------------	------------------------



ELEV 115	D TDZE 115
----------	-------------------

CATEGORY	A	B	C	D	E
LPV DA		315-½	200 (200-½)		
LNAV/VNAV DA		365-½	250 (300-½)		
LNAV MDA		440-½	325 (400-½)		
CIRCLING	580-1	465 (500-1)	580-1½ 465 (500-1½)	680-2 565 (600-2)	NA

