

Flight Procedures Cover Page	Task Action: FLIGHT CHECK	Task Type: IAP	Estimated Chart Date: 11/30/2023	APWS Task ID: B2D7F07199D94F06803828B4180367AA	APWS Project ID: DFBE7B192DC54322B5E82A8690BD470E
Procedure: RNAV (GPS) Y RWY 13R AMDT 4		Enroute: NO	Specialist: Melton, William		Agreement Number:
Airport ID: KDFW			Airport City: DALLAS-FORT WORTH		State: TX
Facility ID:	Facility Type:	Flight Inspection Remark Type: New FC Slot			

Procedure Comments:  
CLEARs FDC NOTAM 2/8096.  
ACTIVE DATA USED FOR KDFW  
CONTACT MIKE GARRITY (405) 954-5602.

Digitally signed by  
**MICHAEL GARRITY**  
Sep 05, 2023



<b>FIPC BASIC FORM</b>							
<b>PROCEDURE:</b> RNAV (GPS) Y RWY 13R AMDT 4			<b>AIRPORT NAME:</b> DALLAS-FORT WORTH INTL		<b>AIRPORT ID:</b> KDFW	<b>SPECIAL CONTROL NO:</b> OG-09-038-23	
<b>FAC ID:</b> KDFW13R.04Y		<b>CITY:</b> DALLAS-FORT WORTH			<b>ST:</b> TX	<b>ORIG CHART DATE:</b> 11/30/2023	
<b>DFL TYPE:</b> PROC/S	<b>THIRD PARTY:</b> <input type="checkbox"/> YES	<b>EST. TIME ON SITE:</b> 0.4	<b>REIMB. NUMBER:</b>		<b>PTS TASK ID:</b> B2D7F07199D94F06803828B4180367AA		
<b>PREFLIGHT NOTES</b>							
<b>REVIEWER:</b> jeffrey a findley					<b>DATE:</b> 11/28/2023		
<b>COMMENTS:</b>					<b>CHECK ONE:</b>		
					<input checked="" type="checkbox"/> FLT CK REQ <input type="checkbox"/> NFCR <input type="checkbox"/> REJECT		
							YES
					<b>CPV COMPLETE?</b>		X
<b>PROCEDURE RESULTS</b>							
<b>INSPECTION DATE:</b> 11/28/2023		<b>CREW #:</b> VN450	<b>N #:</b> N79	<b>INSTRUMENT PROCEDURE STATUS:</b> <input checked="" type="checkbox"/> SAT <input type="checkbox"/> SAT W/CHANGES <input type="checkbox"/> UNSAT		<b>ARINC CODING:</b> <input checked="" type="checkbox"/> SAT <input type="checkbox"/> SAT/GOLD <input type="checkbox"/> UNSAT	
<b>FLIGHT INSPECTOR SIGNATURE:</b> jeffrey a findley @ 11/28/2023 21:39			<b>PRINTED NAME:</b> FINDLEY, JEFFREY ALLEN				<b>NOTAM INITIATED?</b> <input type="checkbox"/> YES <input checked="" type="checkbox"/> NO
<b>FLIGHT INSPECTOR REMARKS:</b>							
<b>IN-FLIGHT OBSTACLE REPORT</b>							
<b>OBSTRUCTION ID #:</b>	<b>COORDINATES OR LOCATION:</b>		<b>GNSS ALTITUDE (MSL):</b>		<b>BAROMETRIC ALTITUDE (MSL):</b>		<b>HEIGHT ABOVE GROUND LEVEL:</b>

DALLAS-FORT WORTH, TEXAS

AL-6037 (EAA)

23054

WAAS CH <b>72742</b> <b>W13A</b>	APP CRS <b>135°</b>	Rwy Idg TDZE <b>591</b> Apt Elev <b>607</b>
--	------------------------	---

# RNAV (GPS) Y RWY 13R

## DALLAS-FORT WORTH INTL (DFW)

RNP APCH.



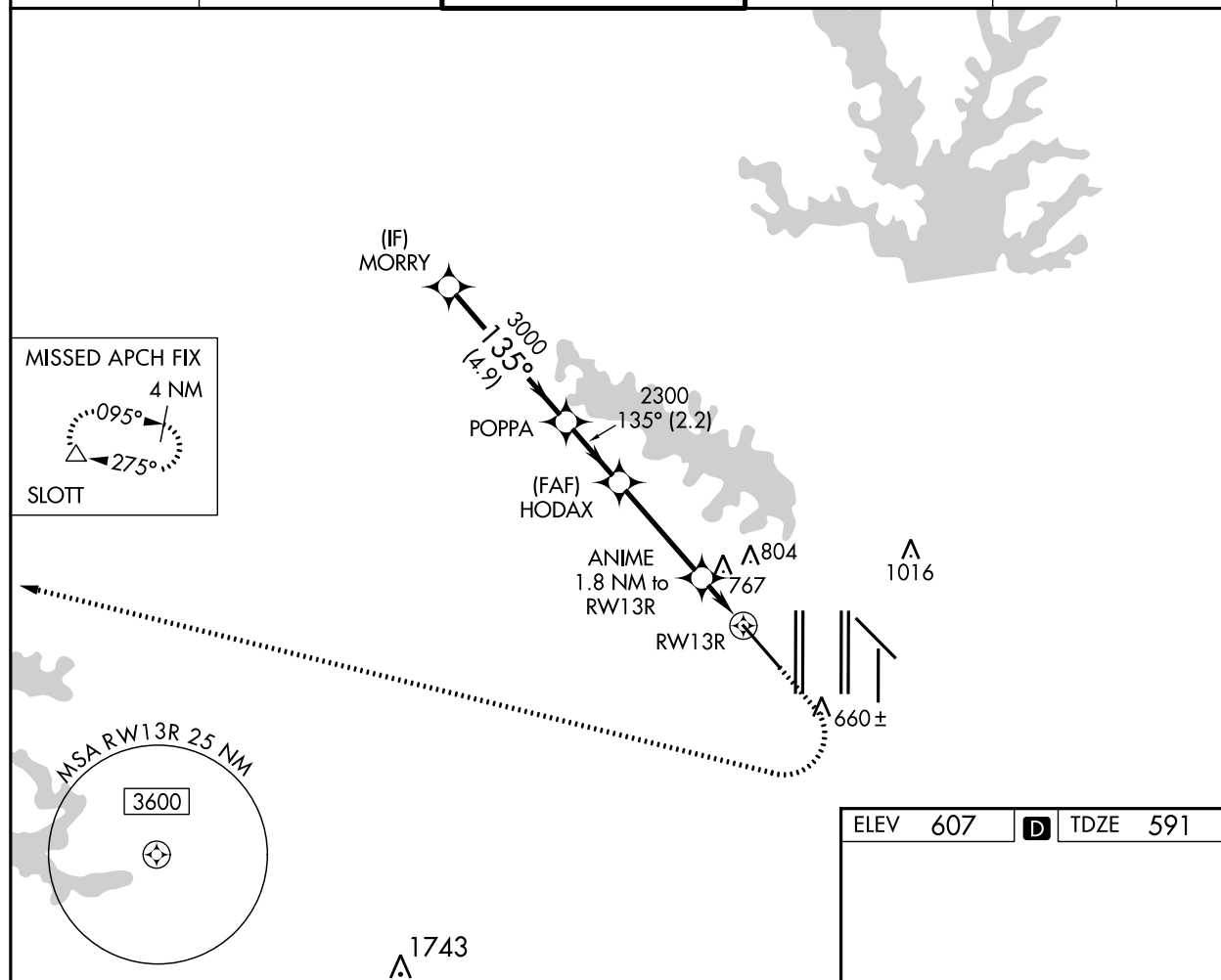
For uncompensated Baro-VNAV systems, LNAV/VNAV NA below -6° C or above 54° C. For inop ALS, increase LNAV/VNAV all Cats visibility to RVR 5500 and LNAV Cat C/D visibility to 1 $\frac{3}{8}$  SM.

MALSR

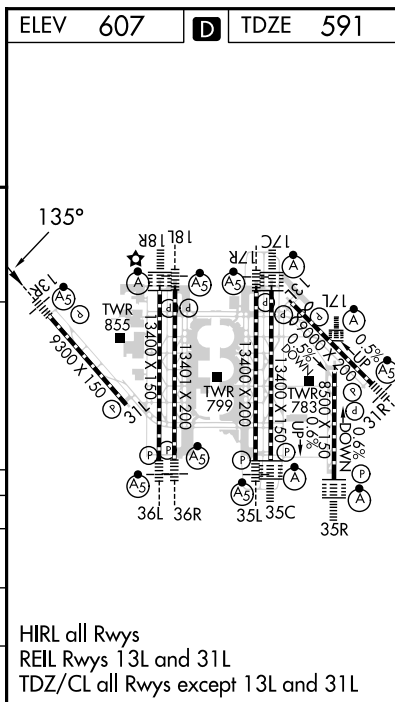


MISSED APPROACH: Climb to 1000 then climbing right turn to 3000 direct SLOTT and hold.

D-ATIS ARR <b>123.775</b> DEP <b>135.925</b>	REGIONAL APP CON <b>133.15 118.1</b>	DFW TOWER <b>126.55</b> EAST <b>124.15</b> WEST	GND CON <b>121.65</b> EAST <b>121.85</b> WEST	CLNC DEL <b>128.25</b>	CPDLC
--	---	---	---	---------------------------	-------



VGSi and RNAV glidepath not coincident (VGSi Angle 3.00/TCH 71).				
<div> <div>1000</div> <div>3000</div> <div>SLOTT</div> </div>				
<div> <div>MORRY</div> <div>POPPA</div> <div>HODAX</div> <div>ANIME 1.8 NM to RWY 13R</div> <div>RWY 13R</div> </div>				
<div> <div>3000</div> <div>135°</div> <div>3000</div> <div>135°</div> <div>2300</div> <div>1200</div> </div>				
<div> <div>GP 3.00°</div> <div>TCH 55</div> <div>4.9 NM</div> <div>2.2 NM</div> <div>3.4 NM</div> <div>1.8 NM</div> </div>				
CATEGORY	A	B	C	D
LPV DA	791/18 200 (200- $\frac{1}{2}$ )			
LNAV/VNAV DA	967/35 376 (400- $\frac{5}{8}$ )			
LNAV MDA	1080/24	489 (500- $\frac{1}{2}$ )	1080/50	489 (500-1)



SC-2, 18 MAY 2023 to 15 JUN 2023

SC-2, 18 MAY 2023 to 15 JUN 2023



DALLAS-FORT WORTH, TEXAS  
Amdt 3 13SEP18OLD  
32°34' N 97°02' W

# DALLAS-FORT WORTH INTL (DFW)

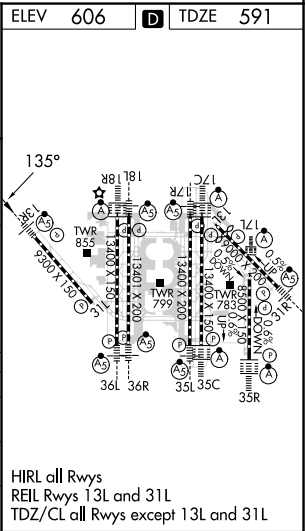
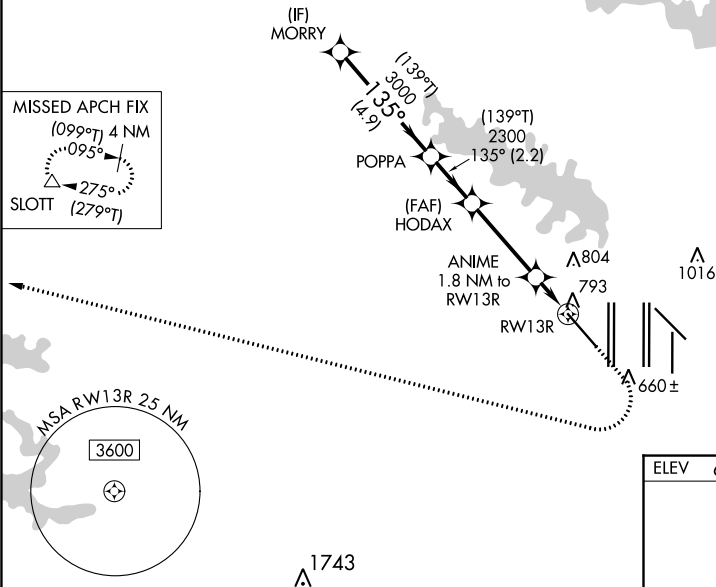
## RNAV (GPS) Y RWY 13R

WAAS CH <b>72742</b> <b>W13A</b>	APP CRS <b>135°</b>	Rwy Idg TDZE Apt Elev	<b>9300</b> <b>591</b> <b>606</b>
--	------------------------	-----------------------------	---

RNAV (GPS) Y RWY 13R  
DALLAS-FORT WORTH INTL (DFW)

RNP APCH - GPS.			MALSR 		MISSED APPROACH: Climb to 1100 then climbing right turn to 3000 direct SLOTT and hold.	
 For uncompensated Baro-VNAV systems, LNAV/VNAV NA below -8° C or above 54° C. For inop ALS, increase LNAV/VNAV all Cats visibility to RVR 6000 and LNAV Cat C/D visibility to 1½ SM.						
D-ATIS ARR <b>123.775</b> DEP <b>135.925</b>		REGIONAL APP CON <b>133.15 118.1</b>	DFW TOWER <b>126.55</b> EAST <b>124.15</b> WEST	GND CON <b>121.65</b> EAST <b>121.85</b> WEST	CLNC DEL <b>128.25</b>	CPDLC

PROTOTYPE-NOT FOR NAVIGATION



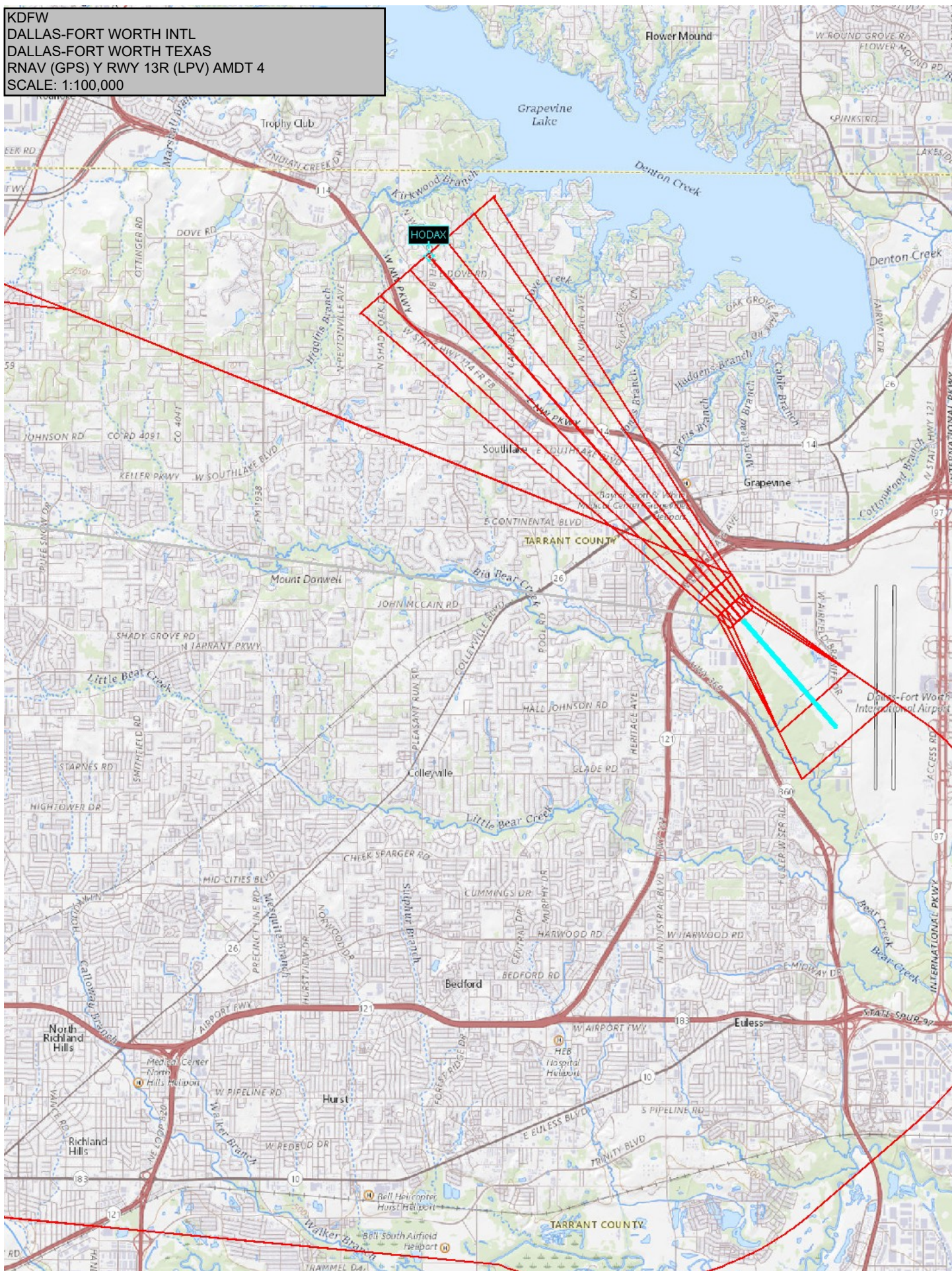


KDFW  
DALLAS-FORT WORTH INTL  
DALLAS-FORT WORTH TEXAS  
RNAV (GPS) Y RWY 13R AMDT 4  
SCALE: 1:500,000



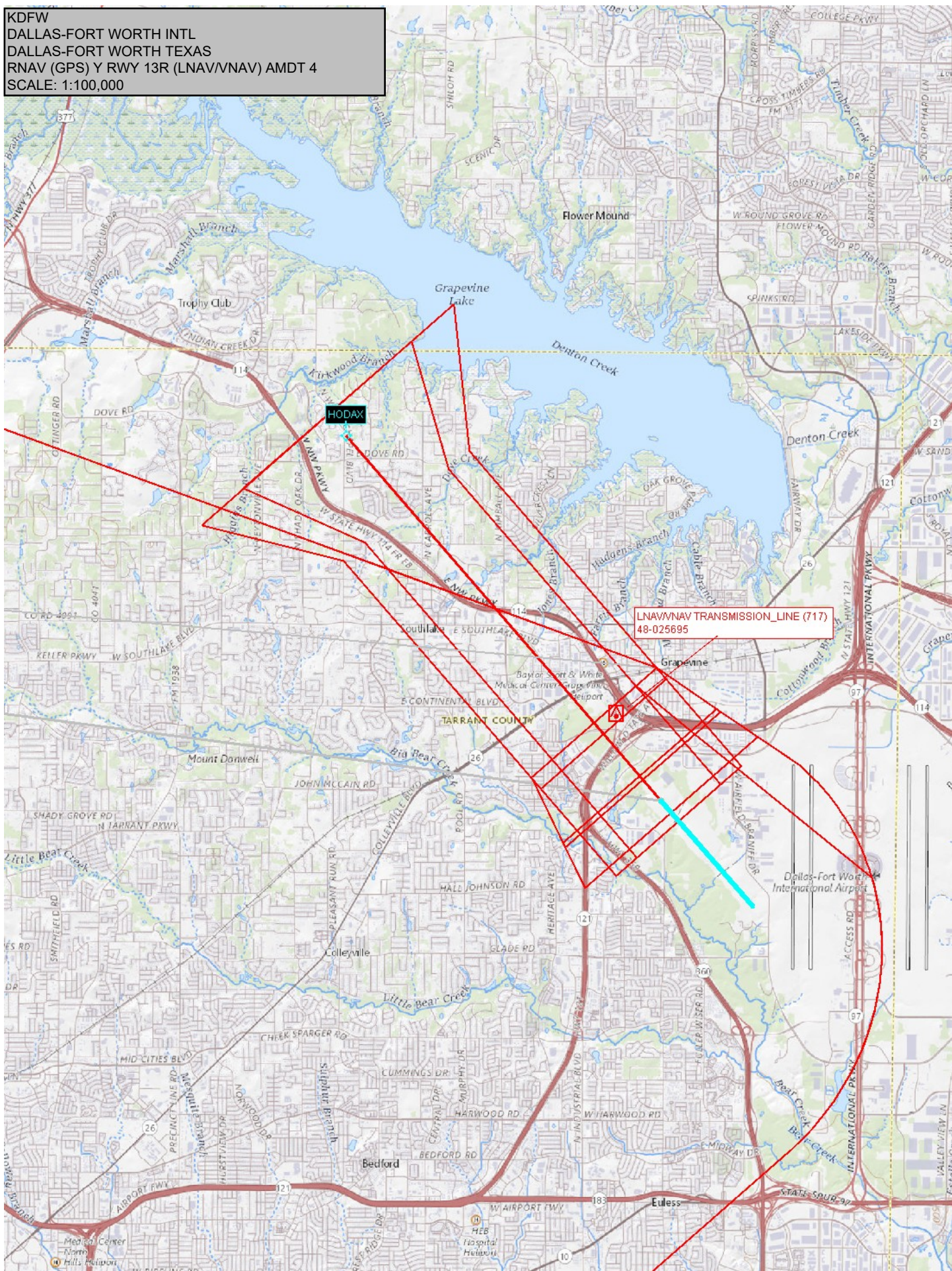


KDFW  
DALLAS-FORT WORTH INTL  
DALLAS-FORT WORTH TEXAS  
RNAV (GPS) Y RWY 13R (LPV) AMDT 4  
SCALE: 1:100,000





KDFW  
DALLAS-FORT WORTH INTL  
DALLAS-FORT WORTH TEXAS  
RNAV (GPS) Y RWY 13R (LNAV/VNAV) AMDT 4  
SCALE: 1:100,000





KDFW  
DALLAS-FORT WORTH INTL  
DALLAS-FORT WORTH TEXAS  
RNAV (GPS) Y RWY 13R (LNAV) AMDT 4  
SCALE: 1:100,000

