

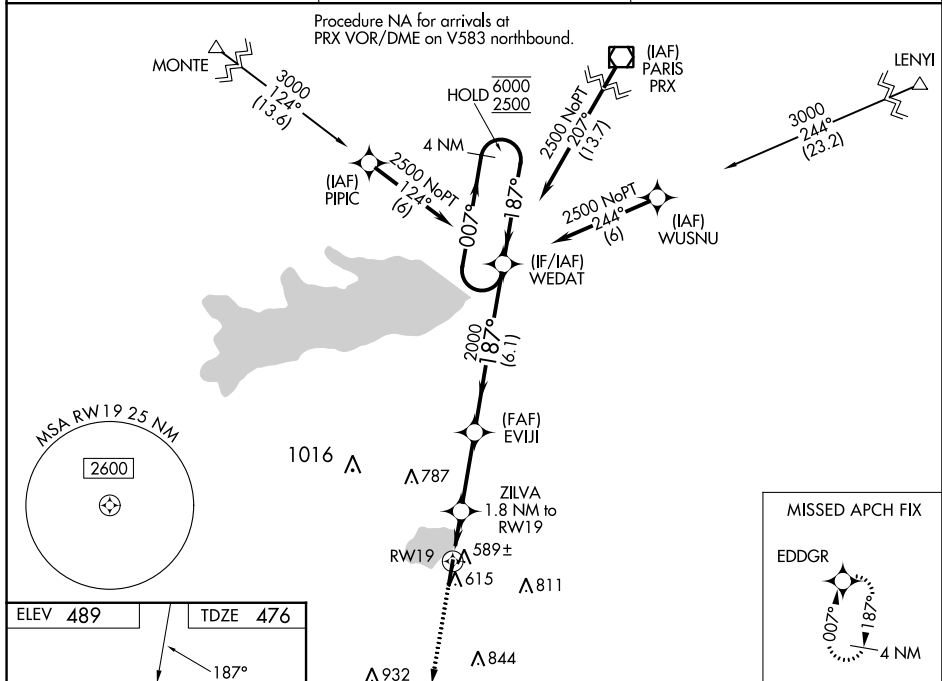
Flight Procedures Cover Page	Task Action: Abbreviated Amendment	Task Type: IAP	Estimated Chart Date: 3/21/2023	APWS Task ID: B26AAF3314934CB98DACA4F5D3060AB3	APWS Project ID: 2546E959C57644A4BCDC5E34AEB8F2E2
Procedure: RNAV (GPS) RWY 19 AMDT 0F		Enroute: NO	Specialist: Bell, Lance		Agreement Number:
Airport ID: KSLR			Airport City: SULPHUR SPRINGS		State: TX
Facility ID:	Facility Type:	Flight Inspection Remark Type:			
<div>Procedure Comments: UTILIZED ACTIVE AIRNAV DATA FOR KSLR RWY 19. REMOVE CHART PLANVIEW NOTE: PROCEDURE NA FOR ARRIVAL AT PRX VOR/DME ON V583 NORTHBOUND. PROCESSED IAW TECHNICAL SUPPORT GROUP (AJF-17) MEMO DATED 07/07/2021 SUBJECT: GUIDANCE FOR PROCEDURAL CHANGES REQUIRING FLIGHT INSPECTION/VALIDATION. CONTACT: DAVID TEFFETELLER: AJV-A433,202-267-5177.</div> <div><div>QUALITY 33 CHECKED</div><div>QUALITY 34 CHECKED</div></div>					

WAAS CH 90323 W19A	APP CRS 187°	Rwy Idg TDZE 476 Apt Elev 489	5001 476 489
--	------------------------	---	---

RNAV (GPS) RWY 19
SULPHUR SPRINGS MUNI (SLR)

RNP APCH-GPS.	MISSED APPROACH: Climb to 3000 direct EDDGR and hold.
---------------	---

AWOS-3 118.35	FORT WORTH CENTER 132.025 360.75	UNICOM 123.075 (CTAF) 0
-------------------------	--	--



WEDAT 4 NM Holding Pattern			
007° 187° 6000 2500			
GP 3.00° TCH 40			
CATEGORY	A	B	C
LPV DA	726-¾	250 (300-¾)	NA
LNAV/VNAV DA	776-1	300 (300-1)	NA
LNAV MDA	840-1	364 (400-1)	NA
CIRCLING	940-1	451 (500-1)	1000-1½ 511 (600-1½)