

Flight Procedures Cover Page	Task Action: P-NOTAM	Task Type: IAP	Estimated Chart Date: 07/15/2021	APWS Task ID: B1E5B12E482948288230898E91460D30	APWS Project ID: C60CF61B6296407CB812B99FC45B3A76
Procedure: RNAV (GPS) RWY 27 AMDT 0B		Enroute: NO	Specialist: Moore, Frank		Agreement Number:
Airport ID: C56			Airport City: MONEE		State: IL
Facility ID:	Facility Type:	Flight Inspection Remark Type:			
<p>Procedure Comments: P-NOTAM This Cancels FDC 1/7242 Order 8260.3, chapter 2, New Circling Criteria Applied.</p> <p>CONTACT DAVE TEFFETELLER 202-267-5177.</p>					

QUALITY  
18  
CHECKED

QUALITY  
41  
CHECKED

# OLD

MONEE, ILLINOIS

AL-6218 (FAA)

19283

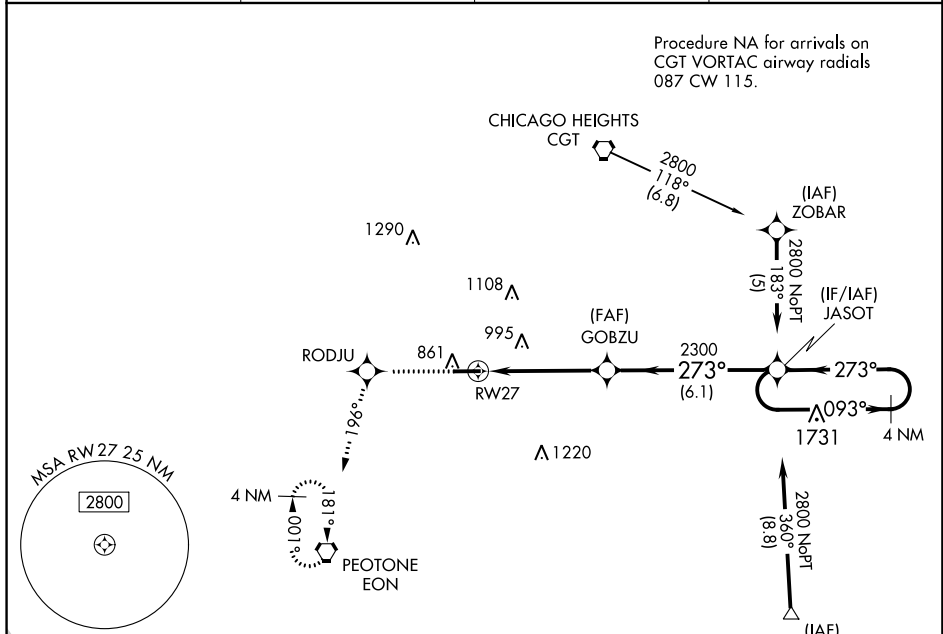
APP CRS <b>273°</b>	Rwy Idg <b>4850</b>
	TDZE <b>778</b>
	Apt Elev <b>790</b>

## RNAV (GPS) RWY 27

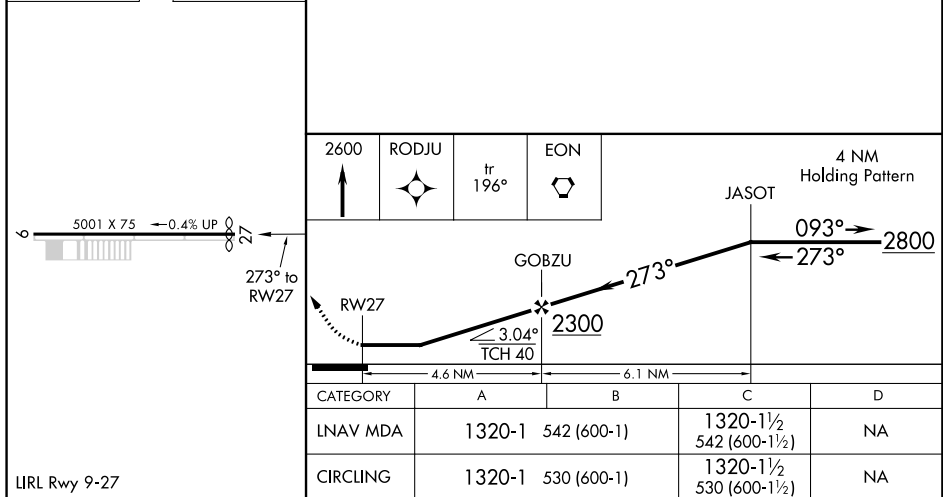
BULT FIELD (C56)

<p><b>NA</b></p> <p>DME/DME RNP-0.3 NA. Visibility reduction by helicopters NA. Use Lansing Muni altimeter setting, when not received, use Chicago Midway Intl altimeter setting and increase all MDA 40 feet. Procedure NA at night.</p>	<p>MISSED APPROACH: Climb to 2600 direct RODJU and via 196° track to EON VORTAC and hold.</p>
---	---

AWOS-AV <b>119.125</b>	IGQ AWOS-3 <b>119.275</b>	CHICAGO CENTER <b>132.5 284.7</b>	UNICOM <b>123.0</b> (CTAF)
---------------------------	------------------------------	--------------------------------------	-------------------------------



ELEV 790	TDZE 778
----------	----------



LIRL Rwy 9-27

MONEE, ILLINOIS

Orig-A 31MAR16

41°23'N-87°41'W

## RNAV (GPS) RWY 27

BULT FIELD (C56)

EC-3, 18 JUN 2020 to 16 JUL 2020

