

<b>Flight Procedure Tracking Form</b>		<b>Action:</b> AMENDMENT	<b>Task Type:</b> IAP	<b>Date Open:</b> 10/01/2019	<b>Task #:</b> 2019100132467001003	<b>Request #:</b> 20191001324670
<b>Procedure:</b> APPROACH RNAV (GPS) RWY 36 AMDT 1C			<b>Airport ID:</b> KGAD	<b>Airport:</b> NORTHEAST ALABAMA RGNL		<b>Reimbursable #:</b> NO
<b>City:</b> GADSDEN	<b>ST:</b> AL	<b>GPS #:</b>	<b>Estimated Chart Date:</b> 03/26/2020			<b>FICO #:</b>
<b>Fac ID:</b> N/A		<b>Fac. Type:</b>			<b>Specialist:</b> STEVEN SCHUTRUM	
<b>Procedure Review</b>						
	<b>Rec'd</b>	<b>Rel'd</b>	<b>Full Name</b>	<b>Comments</b>		
<b>Lead:</b>	10/01/2019			<div style="display: flex; justify-content: space-between;"> <div> <b>QUALITY</b> 20 <b>CHECKED</b> </div> <div> <i>Digitally signed by</i>  <b>BRIAN J BICKETT</b>  Dec 11, 2019 </div> <div> <b>QUALITY</b> 26 <b>CHECKED</b> </div> </div>		
<b>QA:</b>						
<b>Liaison:</b>						
<b>Procedure Comments:</b> ENROUTE-NON <b>Remark Type:</b> INFORMATION  P-NOTAM  NEW CIRCLING AREAS  PROCESSED IAW AIRCRAFT OPERATIONS GROUP (AJW-33) MEMO, OCTOBER 3, 2018, SUBJECT: FLIGHT INSPECTION REVIEW NOT REQUIRED.  DAVE DANNER, 405-954-5077						

# OLD

GADSDEN, ALABAMA

AL-897 (FAA)

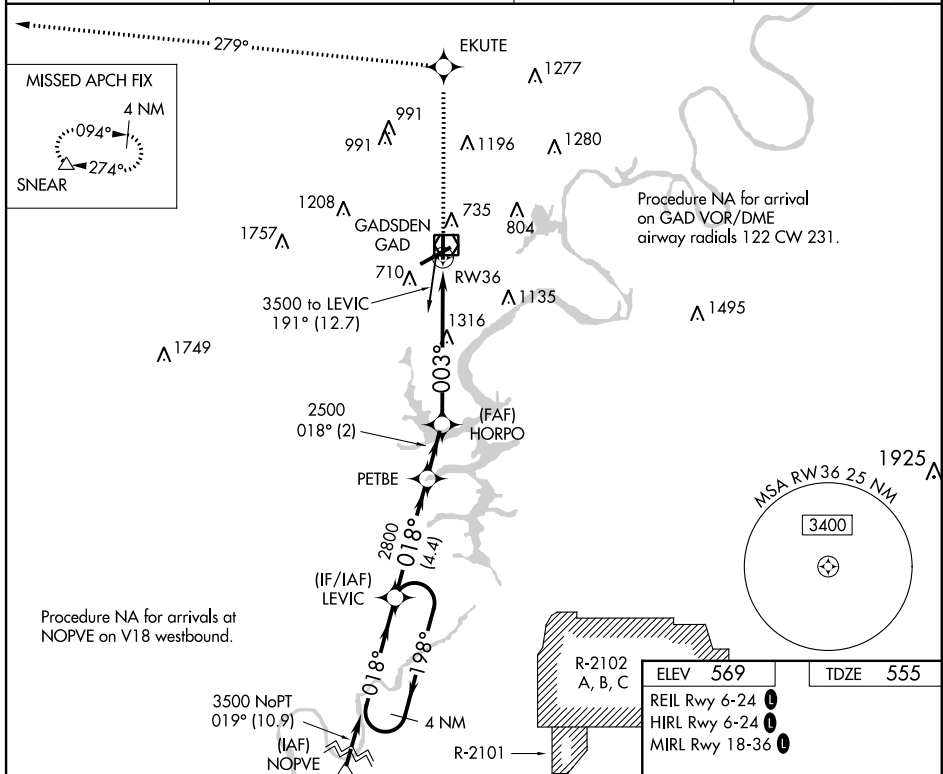
19227

WAAS CH <b>90224</b> <b>W36A</b>	APP CRS <b>003°</b>	Rwy Idg TDZE Apt Elev	<b>4806</b> <b>555</b> <b>569</b>
--	------------------------	-----------------------------	---

## RNAV (GPS) RWY 36

### NORTHEAST ALABAMA RGNL (GAD)

RNP APCH.		MISSED APPROACH: Climb to 3500 direct EKUTE and on track 279° to SNEAR and hold.	
When local altimeter setting not received, use Anniston altimeter setting and increase all MDAs 80 feet. Rwy 36 helicopter visibility reduction below $\frac{3}{4}$ SM NA.			
AWOS-3PT <b>127.825</b>	BIRMINGHAM APP CON <b>125.45 279.65</b>	CLNC DEL <b>120.05 257.7</b>	UNICOM <b>122.8 (CTAF) 0</b>



VGSI and descent angles not coincident (VGSI Angle 2.75/TCH 40).				3500	EKUTE	tr 279°	SNEAR
4 NM Holding Pattern				LEVIC	PETBE	HORPO	RW36
3500 ← 198° → 018° →				2800	2500	003°	
				4.4 NM	2 NM	6 NM	
CATEGORY	A	B	C	D			
LP MDA	1600-1¼ 1045 (1100-1¼)	1600-1½ 1045 (1100-1½)	1600-3	1045 (1100-3)			
LNAV MDA	1640-1¼ 1085 (1100-1¼)	1640-1½ 1085 (1100-1½)	1640-3	1085 (1100-3)			
CIRCLING	1640-1¼ 1071 (1100-1¼)	1640-1½ 1071 (1100-1½)	1640-3	1071 (1100-3)			

GADSDEN, ALABAMA  
Amdt 1B 25APR19

33°58'N-86°05'W

NORTHEAST ALABAMA RGNL (GAD)  
RNAV (GPS) RWY 36

SE-4, 12 SEP 2019 to 10 OCT 2019

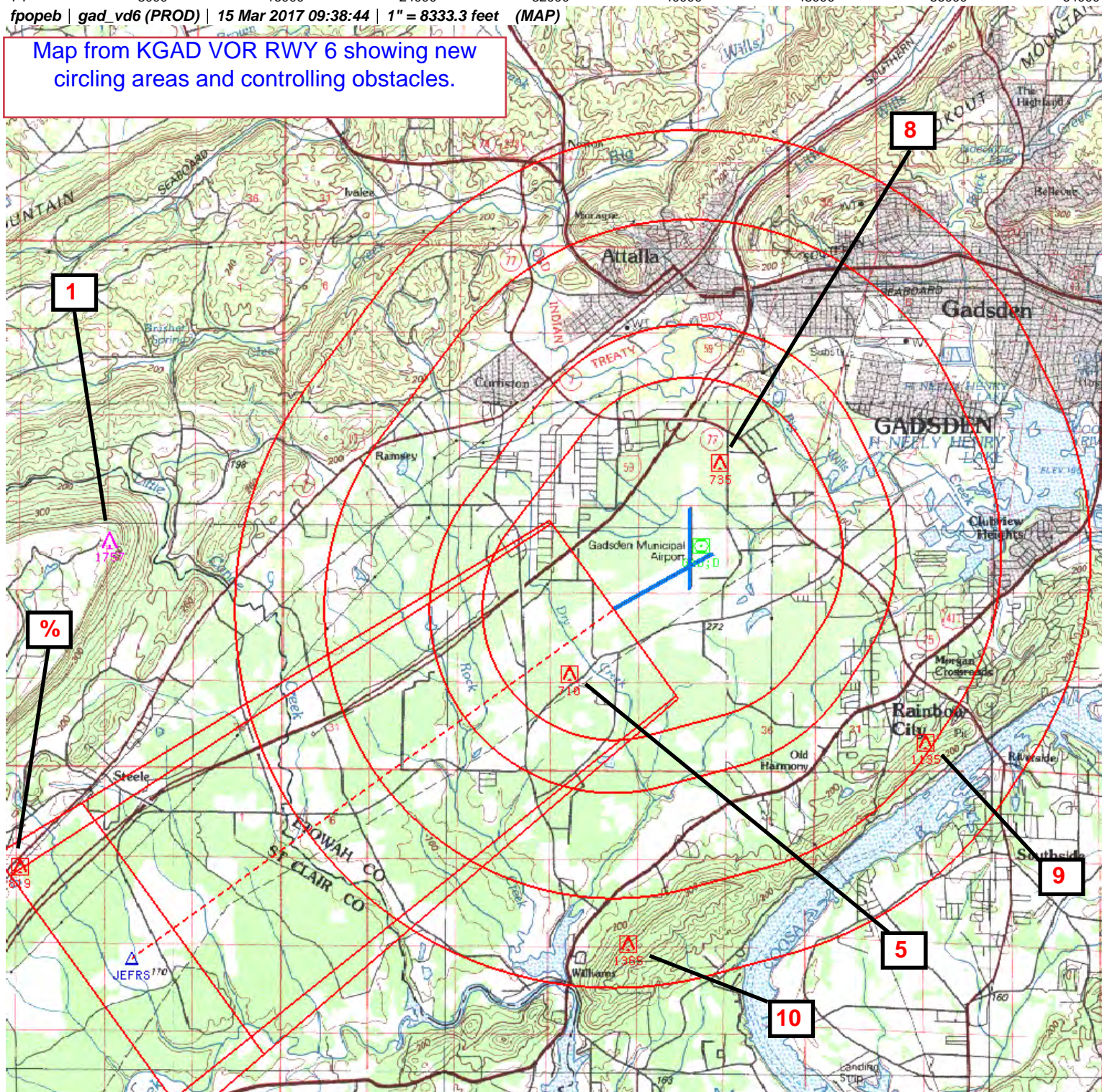
SE-4, 12 SEP 2019 to 10 OCT 2019



NM 1 2 3 4 5 6 7 8 9 10  
FT 8000 16000 24000 32000 40000 48000 56000 64000

fpopeb | gad\_vd6 (PROD) | 15 Mar 2017 09:38:44 | 1" = 8333.3 feet (MAP)

Map from KGAD VOR RWY 6 showing new  
circling areas and controlling obstacles.



Airport ID:	KGAD				
Apt Name:	NORTHEAST ALABAMA REGIONAL				
City:	GADSDEN	No.	SEGMENT	OBSTRUCTION	ELEV
State:	AL	%	TERPS PARA 289	AAO	819
Proc ID:	VOR RWY 6	5	FINAL	TOWER	710
Amdt #	AMDT 14	8	CIRC CAT A/B	TOWER	735
Scale:	1:100,000	9	CIRC CAT C	TOWER	1135
		10	CIRC CAT D	AAO	1365
		1	MISSED	TOWER	1757