

Flight Procedures Cover Page	Task Action: FLIGHT CHECK	Task Type: IAP	Estimated Chart Date: 09/05/2024	APWS Task ID: B1396BCE3A94495F834681B79ABF630C	APWS Project ID: 70310D7774E946ABA952D68E965F0EED
Procedure: RNAV (GPS) RWY 8 AMDT 1		Enroute: NO	Specialist: Dean, Kelly		Agreement Number:
Airport ID: KBXG			Airport City: WAYNESBORO		State: GA
Facility ID:	Facility Type:	Flight Inspection Remark Type: New FC Slot			
<div>Procedure Comments: PENDING DATA</div> <div>RUNWAY CONSTRUCTION</div> <div>ADDED LPV MINIMUMS</div> <div>ADDED CAT D MINIMUMS</div> <div>TREE REMOVAL ALLOWS FOR NIGHT OPS TO BE RESTORED.</div> <div>POC FOR THIS ACTION IS CAS TABAKA 405-954-7931</div> <div><div>QUALITY 38 CHECKED</div><div>QUALITY 10 CHECKED</div></div>					

WAYNESBORO, GEORGIA

OLD

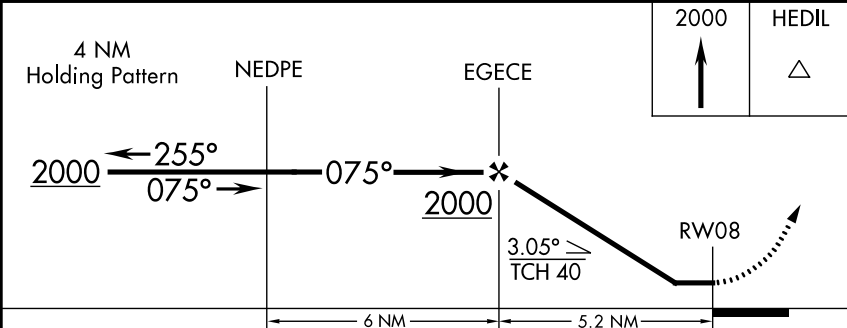
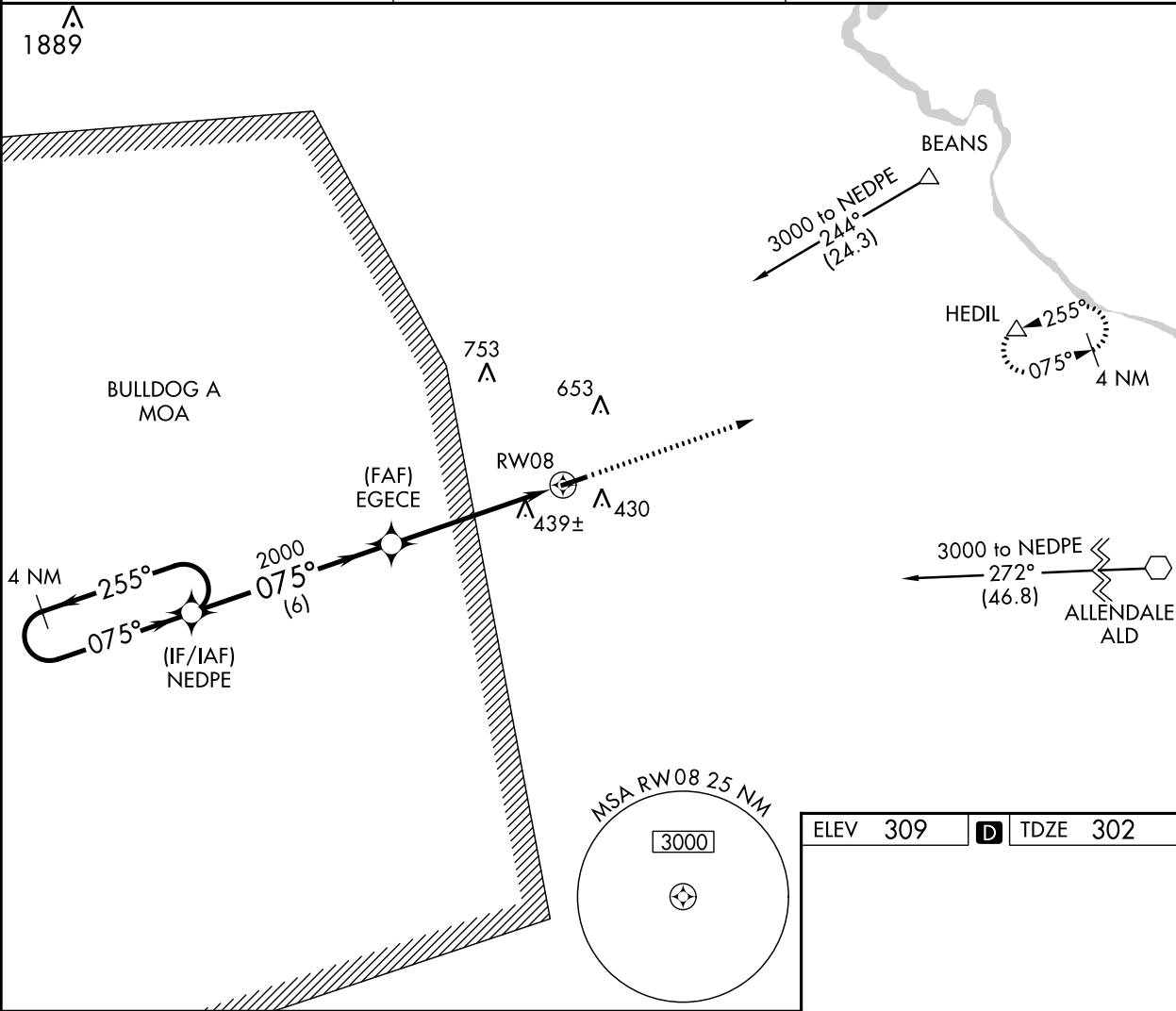
22279

APP CRS 075°	Rwy Idg	5003
	TDZE	302
	Apt Elev	309

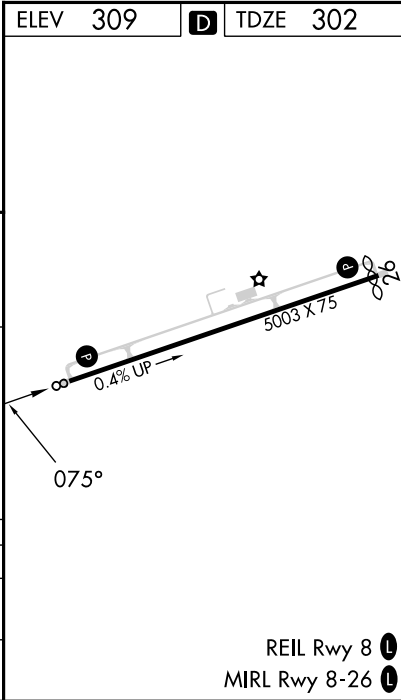
RNAV (GPS) RWY 8
BURKE COUNTY (BXG)

RNP APCH-GPS.		MISSED APPROACH: Climb to 2000 direct HEDIL and hold.
▼	Use Augusta Rgnl at Bush Fld altimeter setting.	
▲NA	Procedure NA at night. Rwy 8 helicopter visibility reduction below 1 SM NA.	

AGS ASOS 132.75	AUGUSTA APP CON ★ 126.8 270.3	CTAF 122.90
---------------------------	---	-----------------------



CATEGORY	A	B	C	D
RNAV MDA	800-1 498 (500-1)	800-1 498 (500-1)	800-1 498 (500-1)	NA
CIRCLING	860-1 551 (600-1)	900-1 591 (600-1)	1080-2 771 (800-2)	NA



WAYNESBORO, GEORGIA
Orig-C 06OCT22

33°02'N-82°00'W

RNAV (GPS) RWY 8
BURKE COUNTY (BXG)

SE-4, 25 JAN 2024 to 22 FEB 2024

KBXG
BURKE COUNTY
WAYNESBORO, GA
1:500,000
RNAV (GPS) RWY 8
AMDT 1
TAA 345 CW 165
STRAIGHT-IN NoPT

TAA Straight-In 345 CW 165
TOWER (1889)
13-000319

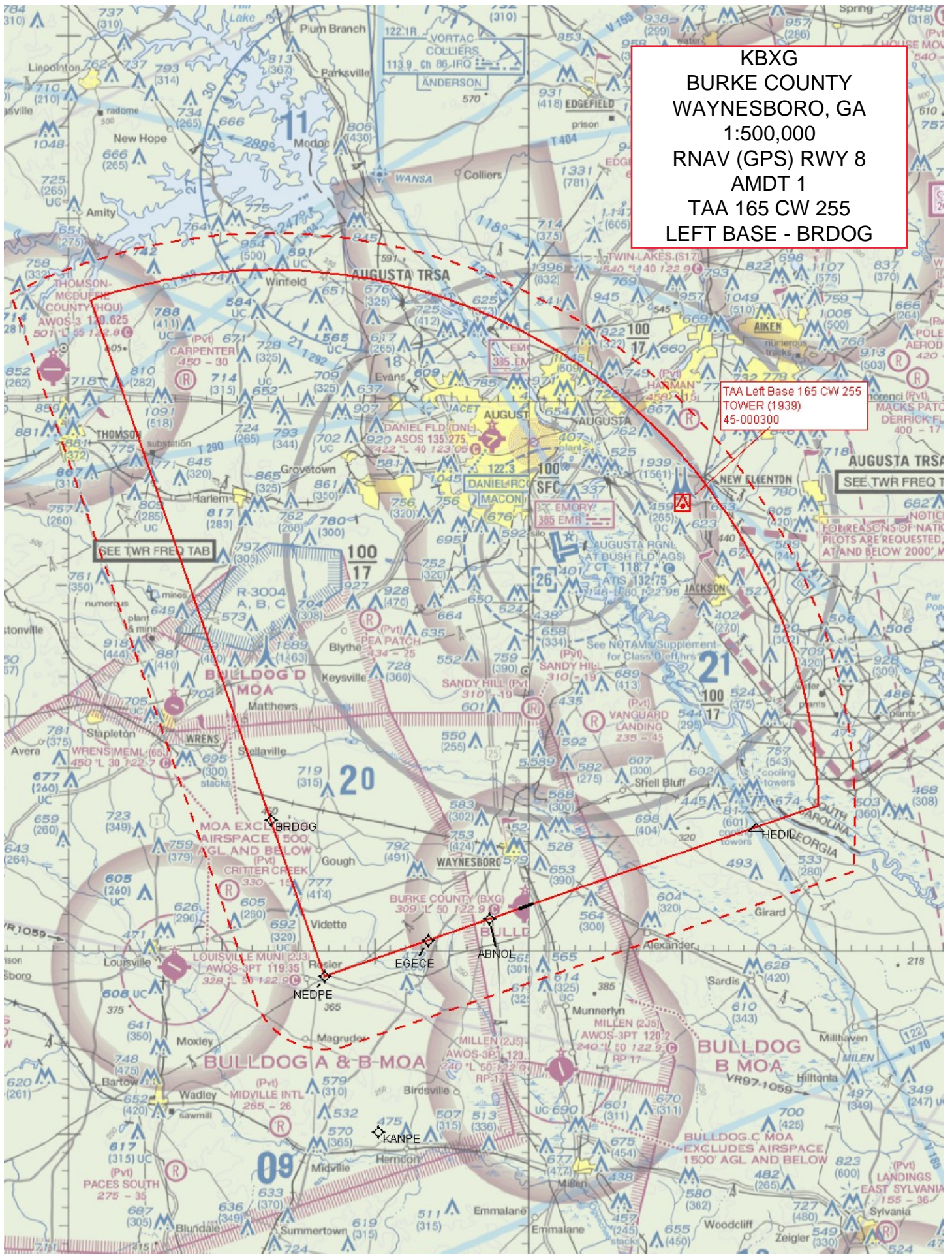
KBXG
BURKE COUNTY
WAYNESBORO, GA
1:500,000
RNAV (GPS) RWY 8
AMDT 1
TAA 165 CW 255
LEFT BASE - BRDOG

TAA Left Base 165 CW 255
TOWER (1939)
45-000300

SEE TWR FREQ TAB

SEE TWR FREQ T

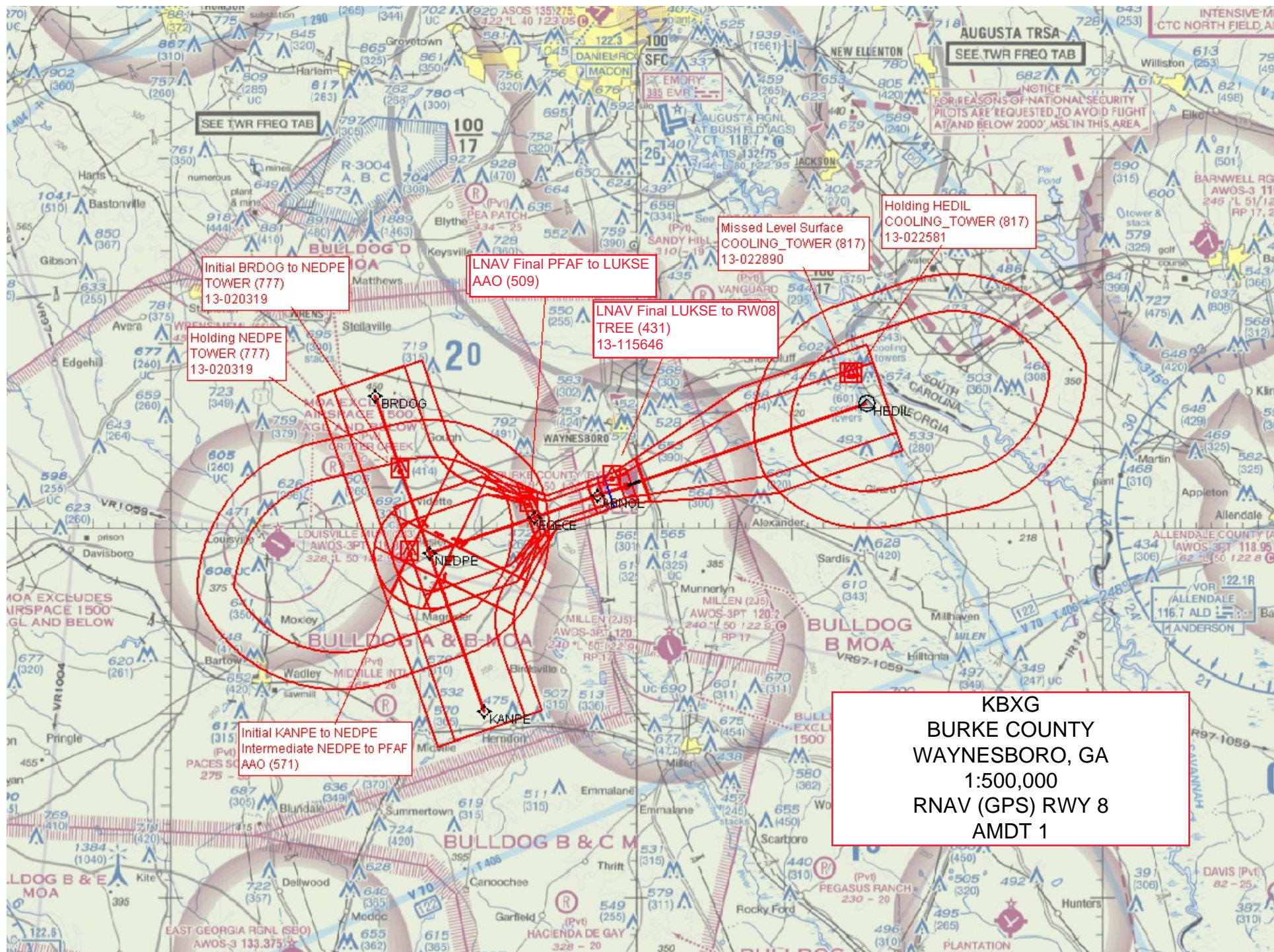
NOTICE
FOR REASONS OF NAT'L
PILOTS ARE REQUESTED,
AT AND BELOW 2000' M

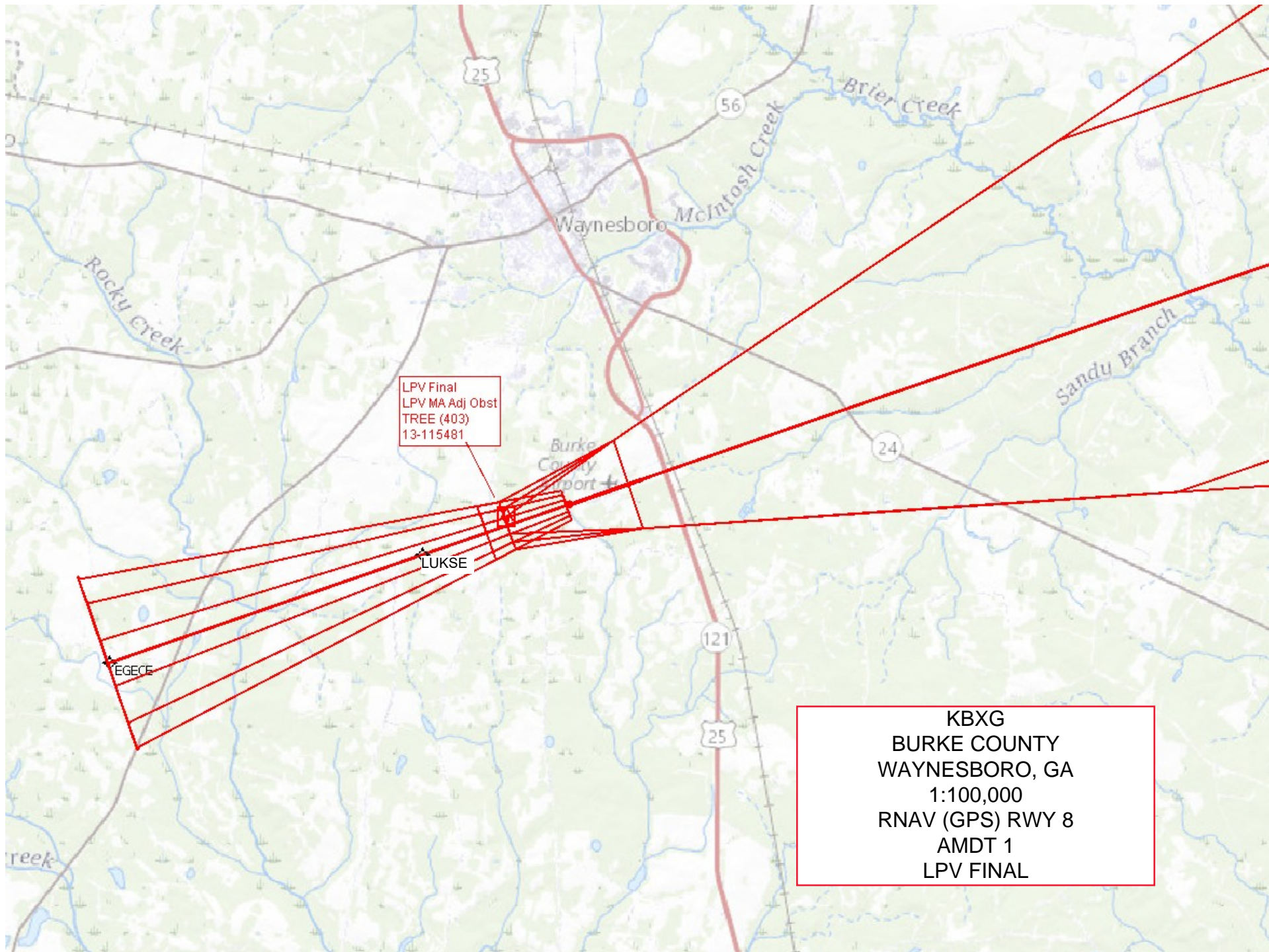


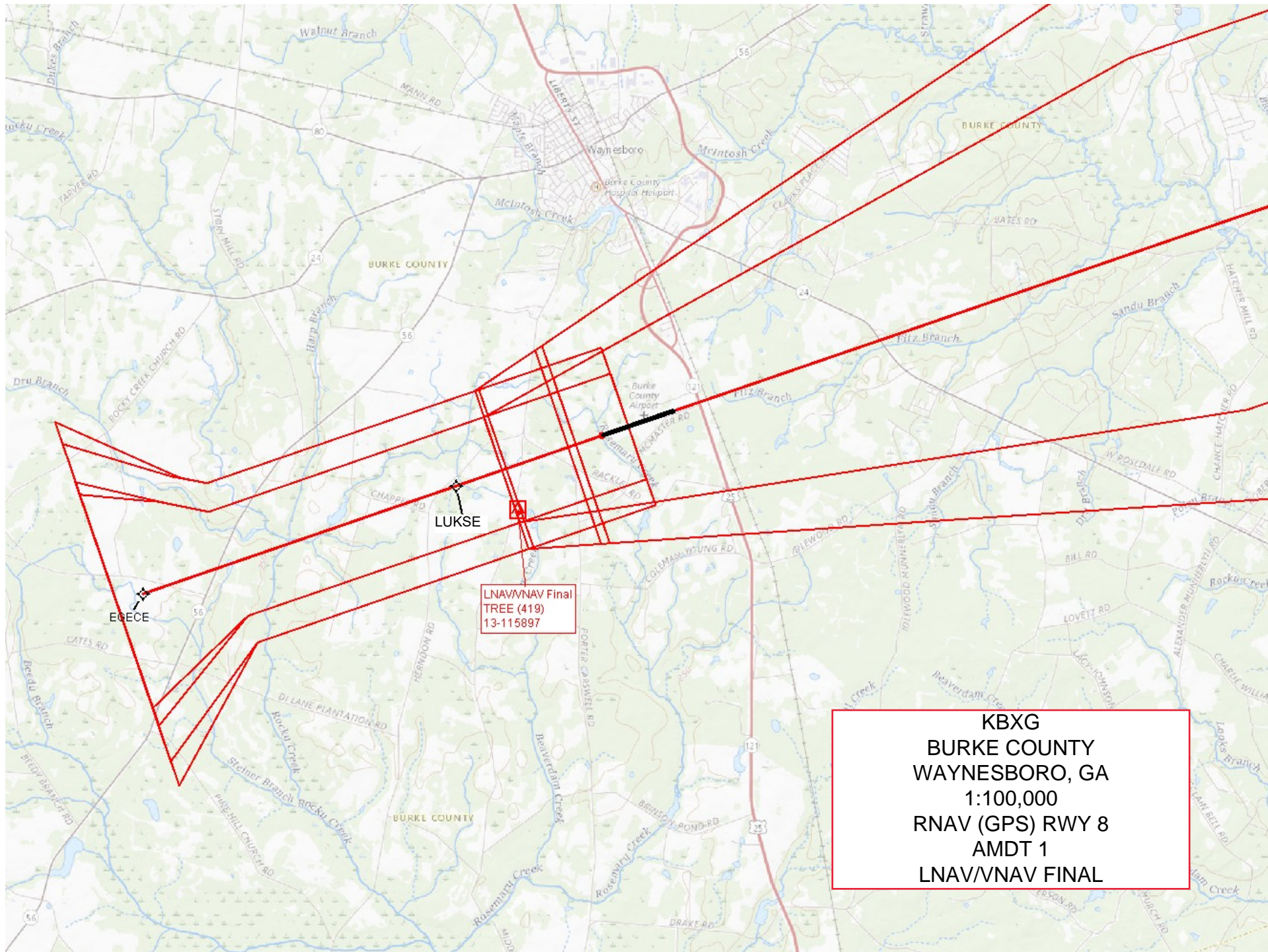
KBXG
BURKE COUNTY
WAYNESBORO, GA
1:500,000
RNAV (GPS) RWY 8
AMDT 1
TAA 255 CW 345
RIGHT BASE - KANPE

TAA Right Base 255 CW 345
TOWER (823)
13-001583

COASTAL MOA ADVISORY SERVICE
VHF 119.225 OR PHONE 1-800-229-2639







KBXG
BURKE COUNTY
WAYNESBORO, GA
1:100,000
RNAV (GPS) RWY 8
AMDT 1
LNAV/VNAV FINAL

