

Flight Procedures Cover Page	Task Action: Abbreviated Amendment	Task Type: IAP	Estimated Chart Date: 04/22/2021	APWS Task ID: B0A23A4ABD2D4A88BF4681000CADA596	APWS Project ID: 69C31CC96FD949AD9735437A5F11AD02
Procedure: RNAV (GPS) RWY 21 AMDT 0E		Enroute: NO	Specialist: Getz, Peter		Agreement Number:
Airport ID: KJQD			Airport City: HARTFORD		State: KY
Facility ID:	Facility Type:	Flight Inspection Remark Type:			
<div>Procedure Comments:</div> <div>P-NOTAM FDC 1/2796</div> <div>THIS CANCELS NOTAM 0/0136</div> <div>ACTIVE DATA USED</div> <div>PROCESSED IAW AIRCRAFT OPERATIONS GROUP (AJF-10) MEMO, APRIL 29, 2020 SUBJECT: FLIGHT INSPECTION REVIEW NOT REQUIRED.</div> <div>CONTACT DONALD LANIER: WK: (405) 954-8242 CELL: (405)-210-2999</div> <div><div>QUALITY 6 CHECKED</div><div>SN 1/7/21</div><div>QUALITY 15 CHECKED</div></div>					

HARTFORD, KENTUCKY

AL-9266 (FAA)

20310

WAAS CH 90526 W21A	APP CRS 207°	Rwy Idg TDZE Apt Elev 5003 537 537
--	------------------------	--

RNAV (GPS) RWY 21

OHIO COUNTY (JQD)

RNP APCH.

Baro-VNAV and VDP NA when using Owensboro altimeter setting. For uncompensated Baro-VNAV systems, LNAV/VNAV NA below -16°C or above 54°C. When local altimeter setting not received, use Owensboro altimeter setting and increase LPV DA to 858 feet, increase LNAV/VNAV DA to 1082 feet. Increase all MDA 80 feet, increase LNAV/VNAV visibilities all Cats ¼ SM, increase LNAV and Circling Cat C visibility ¼ SM.

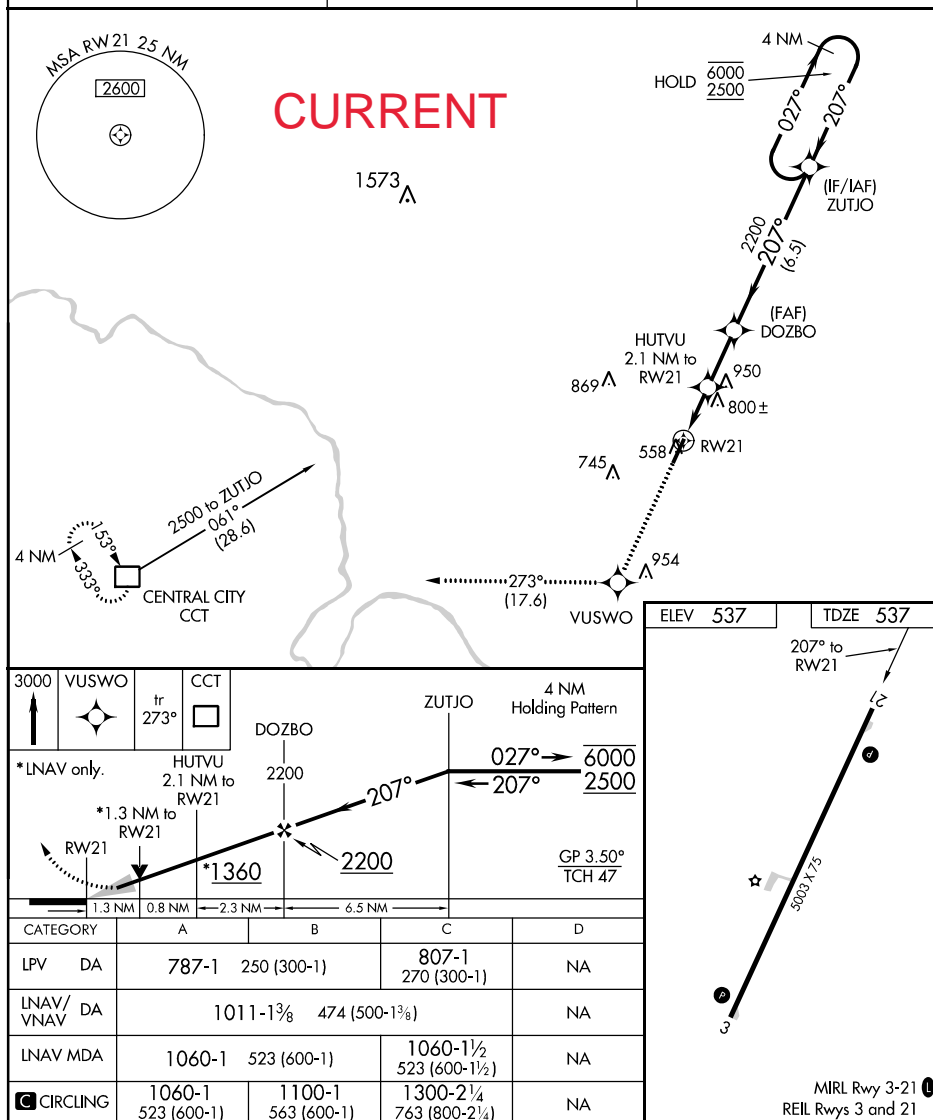
MISSED APPROACH:
Climb to 3000 direct
VUSWO and on track
273° to CCT DME
and hold.

AWOS-3PT
132.1

EVANSVILLE APP CON ★
124.025 290.9

UNICOM
122.8 (CTAF) 0

SE-1, 03 DEC 2020 to 31 DEC 2020



SE-1, 03 DEC 2020 to 31 DEC 2020

HARTFORD, KENTUCKY

Orig-D 16JUL20

37°28'N-86°51'W

OHIO COUNTY (JQD)

RNAV (GPS) RWY 21