

Flight Procedures Cover Page	Task Action: P-NOTAM	Task Type: IAP	Estimated Chart Date: 07/15/2021	APWS Task ID: B08ACE42749C476C93C6538E3876BEEC	APWS Project ID: A6DA15B4B029483CABA2F92D0D3B237C
Procedure: VOR RWY 36 AMDT 18A		Enroute: NO	Specialist: Lafferty, James		Agreement Number:
Airport ID: KOCF			Airport City: OCALA		State: FL
Facility ID:	Facility Type:	Flight Inspection Remark Type:			
<p>Procedure Comments:</p> <p>P-NOTAM</p> <p>This Cancels FDC 0/5092</p> <p>Order 8260.3, chapter 2, New Circling Criteria Applied</p> <p>Contact Dave Teffeteller at 202-267-5177</p>					

QUALITY
45
CHECKED

QUALITY
38
CHECKED

OCALA, FLORIDA

OLD


(FAA)

20086

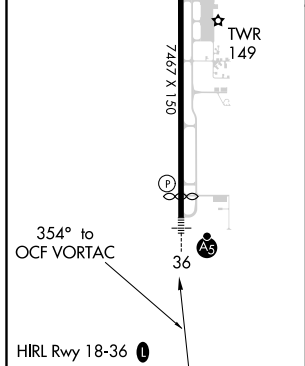
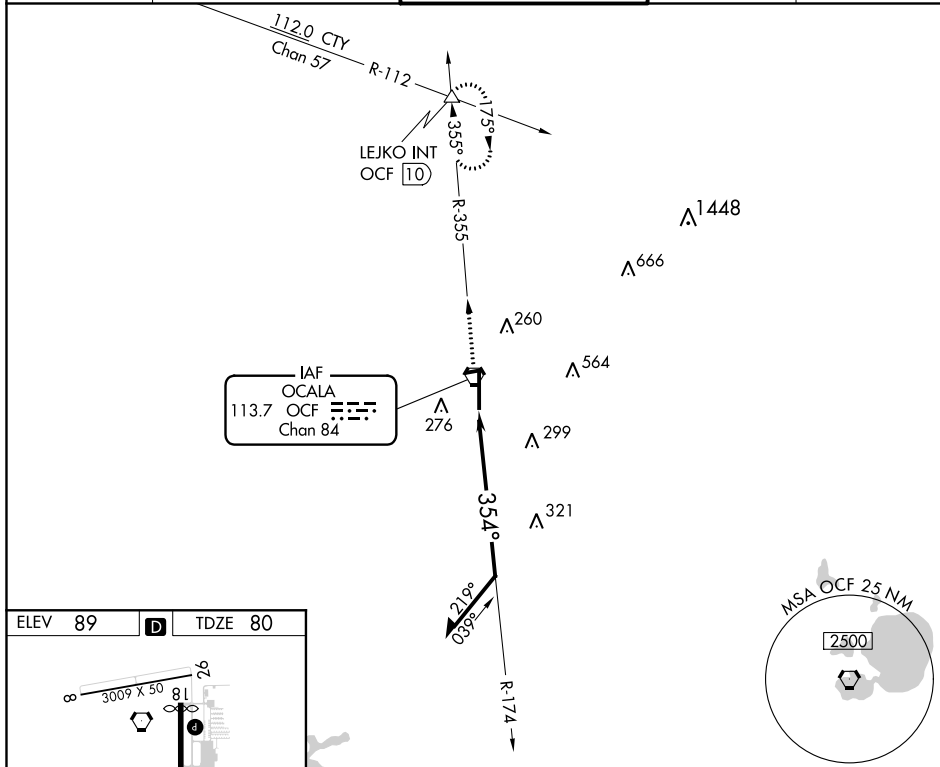
VORTAC OCF 113.7 Chan 84	APP CRS 354°	Rwy Idg 6347 TDZE 80 Apt Elev 89
--	------------------------	---

VOR RWY 36

OCALA INTL-JIM TAYLOR FIELD (OCF)

<p>When local altimeter setting not received, use Gainesville altimeter setting and increase all MDA 100 feet; increase S-36 Cats C and D, and Circling Cat C visibility ¼ mile. For inoperative MALSR, increase S-36 Cats A and B visibility to 1 mile. For inoperative MALSR when using Gainesville altimeter setting, increase S-36 Cats A and B visibility to 1 mile. VDP NA when using Gainesville altimeter setting.</p>	<p>MALSR</p> 	<p>MISSED APPROACH: Climb to 2000 via OCF VORTAC R-355 to LEJKO INT/OCF 10 DME and hold.</p>
--	--	--

ATIS 128.125	JACKSONVILLE APP CON 118.6 251.15	OCALA TOWER ★ 119.25 (CTAF) 0	GND CON 121.4	UNICOM 123.0
------------------------	---	--	-------------------------	------------------------



2000

OCF R-355

LEJKO

△

OCF VORTAC

OCF 2.7 VORTAC

174°

1700

354°

1.7

Remain within 10 NM

CATEGORY	A	B	C	D
S-36	640-¾ 560 (600-¾)		640-1 560 (600-1)	640-1¼ 560 (600-1¼)
CIRCLING	640-1 551 (600-1)		640-1½ 551 (600-1½)	640-2 551 (600-2)

OCALA, FLORIDA
Amdt 18 15JAN09

29°10'N-82°13'W

OCALA INTL-JIM TAYLOR FIELD (OCF)
VOR RWY 36

SE-3, 26 MAR 2020 to 23 APR 2020

SE-3, 26 MAR 2020 to 23 APR 2020

KOCF
Ocala Intl - Jim Taylor Field
Ocala, FL
1:100k
Circling
VOR RWY 36
ADMT: 18A

Circling CAT A TOWER (237)
12-142864

Circling CAT C TOWER (399)
12-003224

Circling CAT B TOWER (276)
12-020051

Circling CAT D TOWER (564)
12-001086

