

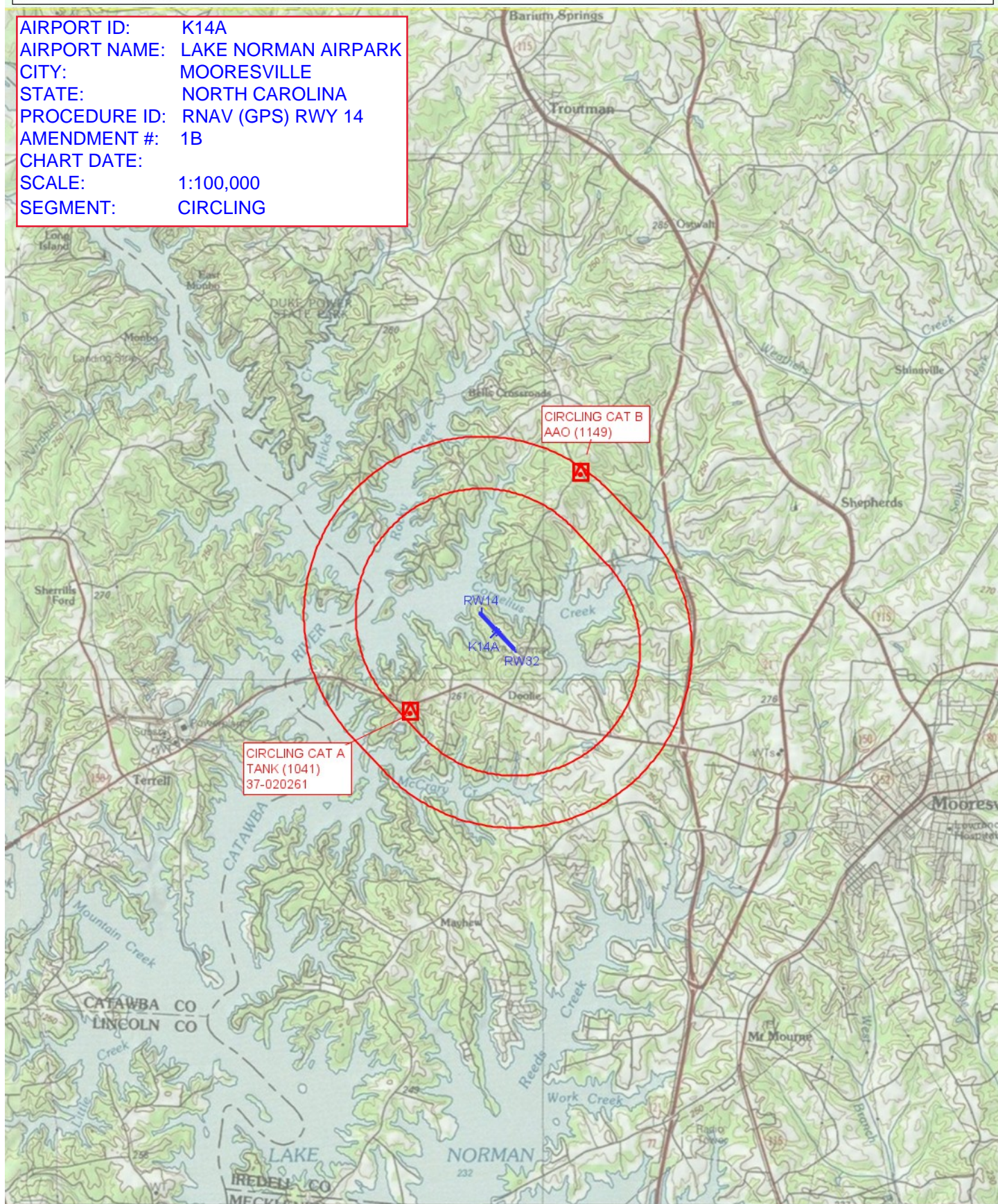
Flight Procedures Cover Page	Task Action: P-NOTAM	Task Type: IAP	Estimated Chart Date: 11/04/2021	APWS Task ID: B0519E704A6C4BCBA234D565E81A6084	APWS Project ID: 46988C1329FE4FDC9F13ED1EC77CC72A
Procedure: RNAV (GPS) RWY 14 AMDT 1B		Enroute: NO	Specialist: Martinez, Rafael		Agreement Number:
Airport ID: 14A			Airport City: MOORESVILLE		State: NC
Facility ID:	Facility Type:	Flight Inspection Remark Type:			
<p>Procedure Comments:</p> <p>P-NOTAM.</p> <p>THIS CANCELS FDC 0-7130.</p> <p>ORDER 8260.3, CHAPTER 2, NEW CIRCLING CRITERIA APPLIED.</p> <p>CONTACT: LONNIE EVERHART 405-954-4576/DAVID TEFFETELLER 202-267-5177.</p>					

QUALITY  
26  
CHECKED

QUALITY  
45  
CHECKED

FT 10000 20000 30000 40000 50000 60000  
IN 100000 200000 300000 400000 500000 600000 700000

AIRPORT ID: K14A  
AIRPORT NAME: LAKE NORMAN AIRPARK  
CITY: MOORESVILLE  
STATE: NORTH CAROLINA  
PROCEDURE ID: RNAV (GPS) RWY 14  
AMENDMENT #: 1B  
CHART DATE:  
SCALE: 1:100,000  
SEGMENT: CIRCLING





OLD

MOORESVILLE, NORTH CAROLINA

AL-10308 (FAA)

19283

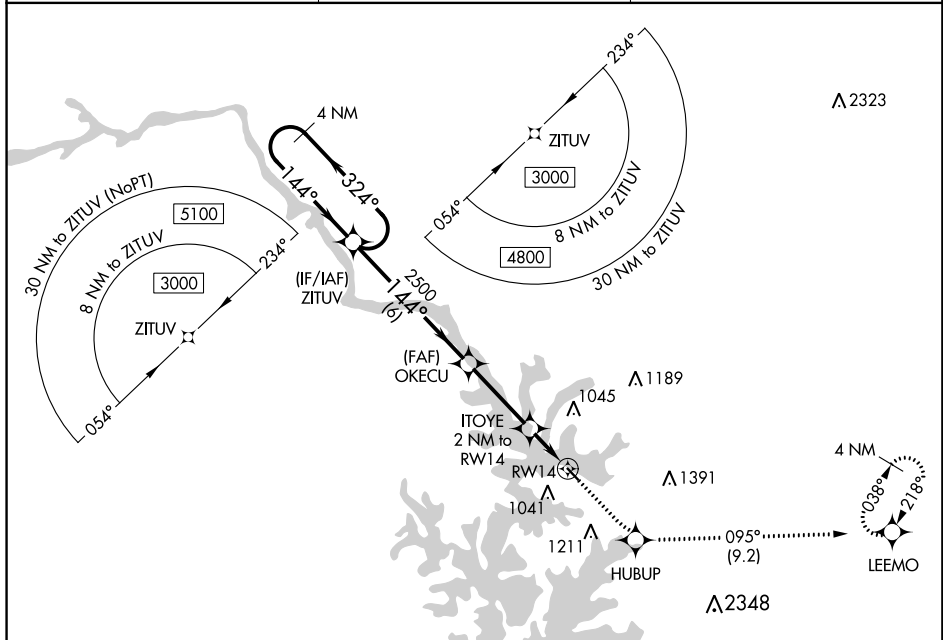
APP CRS	Rwy Idg	2962
144°	TDZE	839
	Apt Elev	839

# RNAV (GPS) RWY 14

LAKE NORMAN AIRPARK (14A)

<p>Procedure NA at night. DME/DME RNP-0.3 NA. Use Statesville altimeter setting; when not received, use Charlotte altimeter setting and increase all MDA 40 feet. Rwy 14, 32 helicopter visibility reduction below 1 SM NA.</p>	<p>MISSED APPROACH: Climb to 4000 direct HUBUP and on track 095° to LEEMO and hold, continue climb-in-hold to 4000.</p>
---	---

SVH AWOS-3 119.225	CHARLOTTE APP CON 134.75 257.2	UNICOM 122.8 (CTAF) 0
-----------------------	-----------------------------------	--------------------------



Visual Segment - Obstacles.		4000	HUBUP	tr 095°	LEEMO
4 NM Holding Pattern					
ZITUV					
3000 ← 324°					
144° →					
144°					
OKECU					
2500					
ITOYE 2 NM to RW14					
RW14					
6 NM					
3.2 NM					
2 NM					
CATEGORY	A	B	C	D	
RNAV MDA	1360-1	521 (600-1)	NA		
CIRCLING	1440-1	601 (700-1)	NA		
MIRL Rwy 14-32 0					

MOORESVILLE, NORTH CAROLINA

Amdt 1A 22JUN17

35°37'N-80°54'W

# LAKE NORMAN AIRPARK (14A)

## RNAV (GPS) RWY 14

SE-2, 18 JUN 2020 to 16 JUL 2020